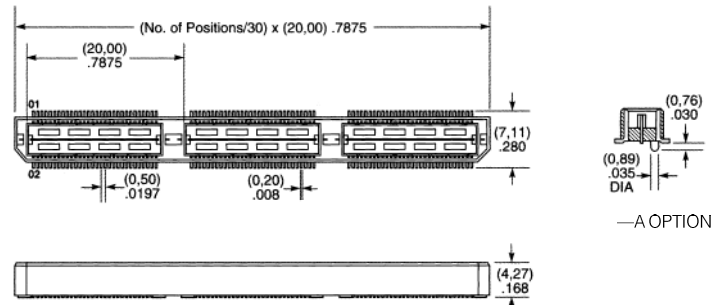
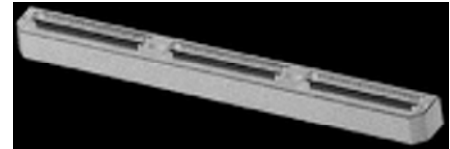


Cat. No.	No. of Contacts Per Row	Dimensions (mm)			Net Price
		A	B	C	
<b>DOUBLE ROW, STRAIGHT PIN, TIN ON CONTACTS</b>					
TSW-102-07-TD	2	2.54	10.92	5.84	<b>\$.18</b>
TSW-104-07-TD	4	2.54	10.92	5.84	<b>.37</b>
TSW-106-07-TD	6	2.54	10.92	5.84	<b>.55</b>
TSW-108-07-TD	8	2.54	10.92	5.84	<b>.73</b>
TSW-110-07-TD	10	2.54	10.92	5.84	<b>.91</b>
TSW-112-07-TD	12	2.54	10.92	5.84	<b>1.10</b>
TSW-120-07-TD	20	2.54	10.92	5.84	<b>1.83</b>
TSW-124-07-TD	24	2.54	10.92	5.84	<b>2.19</b>
TSW-136-07-TD	36	2.54	10.92	5.84	<b>3.29</b>
TSW-150-07-TD	50	2.54	10.92	5.84	<b>3.65</b>
<b>SINGLE ROW, STRAIGHT PIN, TIN ON CONTACTS</b>					
TSW-102-07-TS	2	2.54	10.92	5.84	<b>.09</b>
TSW-104-07-TS	4	2.54	10.92	5.84	<b>.18</b>
TSW-106-07-TS	6	2.54	10.92	5.84	<b>.27</b>
TSW-108-07-TS	8	2.54	10.92	5.84	<b>.37</b>
TSW-110-07-TS	10	2.54	10.92	5.84	<b>.46</b>
TSW-112-07-TS	12	2.54	10.92	5.84	<b>.55</b>
TSW-120-07-TS	20	2.54	10.92	5.84	<b>.91</b>
TSW-124-07-TS	24	2.54	10.92	5.84	<b>1.10</b>
TSW-136-07-TS	36	2.54	10.92	5.84	<b>1.64</b>
TSW-150-07-TS	50	2.54	10.92	5.84	<b>1.83</b>
<b>DOUBLE ROW, STRAIGHT PIN, GOLD ON CONTACTS, GOLD FLASH ON BALANCE</b>					
TSW-102-08-G-D	2	5.08	13.46	5.84	<b>.22</b>
TSW-104-08-G-D	4	5.08	13.46	5.84	<b>.44</b>
TSW-106-08-G-D	6	5.08	13.46	5.84	<b>.66</b>
TSW-108-08-G-D	8	5.08	13.46	5.84	<b>.88</b>
TSW-110-08-G-D	10	5.08	13.46	5.84	<b>1.10</b>
TSW-112-08-G-D	12	5.08	13.46	5.84	<b>1.32</b>
TSW-120-08-G-D	20	5.08	13.46	5.84	<b>2.20</b>
TSW-124-08-G-D	24	5.08	13.46	5.84	<b>2.64</b>
TSW-136-08-G-D	36	5.08	13.46	5.84	<b>3.96</b>
TSW-150-08-G-D	50	5.08	13.46	5.84	<b>4.40</b>
<b>SINGLE ROW, STRAIGHT PIN, GOLD ON CONTACTS, GOLD FLASH ON BALANCE</b>					
TSW-102-08-G-S	2	5.08	13.46	5.84	<b>.11</b>
TSW-104-08-G-S	4	5.08	13.46	5.84	<b>.22</b>
TSW-106-08-G-S	6	5.08	13.46	5.84	<b>.33</b>
TSW-108-08-G-S	8	5.08	13.46	5.84	<b>.44</b>
TSW-110-08-G-S	10	5.08	13.46	5.84	<b>.55</b>
TSW-112-08-G-S	12	5.08	13.46	5.84	<b>.66</b>
TSW-120-08-G-S	20	5.08	13.46	5.84	<b>1.10</b>
TSW-124-08-G-S	24	5.08	13.46	5.84	<b>1.32</b>
TSW-136-08-G-S	36	5.08	13.46	5.84	<b>1.98</b>
TSW-150-08-G-S	50	5.08	13.46	5.84	<b>2.20</b>
<b>DOUBLE ROW, STRAIGHT PIN, TIN ON CONTACTS</b>					
TSW-102-08-TD	2	5.08	13.46	5.84	<b>.19</b>
TSW-104-08-TD	4	5.08	13.46	5.84	<b>.38</b>
TSW-106-08-TD	6	5.08	13.46	5.84	<b>.56</b>
TSW-108-08-TD	8	5.08	13.46	5.84	<b>.75</b>
TSW-110-08-TD	10	5.08	13.46	5.84	<b>.94</b>
TSW-112-08-TD	12	5.08	13.46	5.84	<b>1.13</b>
TSW-120-08-TD	20	5.08	13.46	5.84	<b>1.88</b>
TSW-124-08-TD	24	5.08	13.46	5.84	<b>2.25</b>
TSW-136-08-TD	36	5.08	13.46	5.84	<b>3.38</b>
TSW-150-08-TD	50	5.08	13.46	5.84	<b>3.75</b>
<b>SINGLE ROW, STRAIGHT PIN, TIN ON CONTACTS</b>					
TSW-102-08-TS	2	5.08	13.46	5.84	<b>.09</b>
TSW-104-08-TS	4	5.08	13.46	5.84	<b>.19</b>
TSW-106-08-TS	6	5.08	13.46	5.84	<b>.28</b>
TSW-108-08-TS	8	5.08	13.46	5.84	<b>.38</b>
TSW-110-08-TS	10	5.08	13.46	5.84	<b>.47</b>
TSW-112-08-TS	12	5.08	13.46	5.84	<b>.56</b>
TSW-120-08-TS	20	5.08	13.46	5.84	<b>.94</b>
TSW-124-08-TS	24	5.08	13.46	5.84	<b>1.13</b>
TSW-136-08-TS	36	5.08	13.46	5.84	<b>1.69</b>
TSW-150-08-TS	50	5.08	13.46	5.84	<b>1.88</b>
<b>DOUBLE ROW, STRAIGHT PIN, GOLD ON CONTACTS, GOLD FLASH ON BALANCE</b>					
TSW-102-14-G-D	2	2.79	13.46	8.13	<b>.22</b>
TSW-104-14-G-D	4	2.79	13.46	8.13	<b>.44</b>
TSW-106-14-G-D	6	2.79	13.46	8.13	<b>.66</b>
TSW-108-14-G-D	8	2.79	13.46	8.13	<b>.88</b>
TSW-110-14-G-D	10	2.79	13.46	8.13	<b>1.10</b>
TSW-112-14-G-D	12	2.79	13.46	8.13	<b>1.32</b>
TSW-120-14-G-D	20	2.79	13.46	8.13	<b>2.20</b>
TSW-124-14-G-D	24	2.79	13.46	8.13	<b>2.64</b>
TSW-136-14-G-D	36	2.79	13.46	8.13	<b>3.96</b>
TSW-150-14-G-D	50	2.79	13.46	8.13	<b>4.40</b>

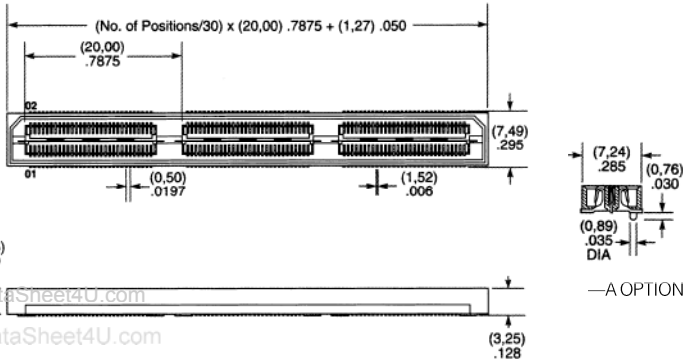
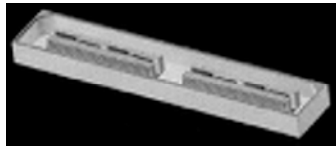
Cat. No.	No. of Contacts Per Row	Dimensions (mm)			Net Price
		A	B	C	
<b>SINGLE ROW, STRAIGHT PIN, GOLD ON CONTACTS, GOLD FLASH ON BALANCE</b>					
TSW-102-14-G-S	2	2.79	13.46	8.13	<b>\$.11</b>
TSW-104-14-G-S	4	2.79	13.46	8.13	<b>.22</b>
TSW-106-14-G-S	6	2.79	13.46	8.13	<b>.33</b>
TSW-108-14-G-S	8	2.79	13.46	8.13	<b>.44</b>
TSW-110-14-G-S	10	2.79	13.46	8.13	<b>.55</b>
TSW-112-14-G-S	12	2.79	13.46	8.13	<b>.66</b>
TSW-120-14-G-S	20	2.79	13.46	8.13	<b>1.10</b>
TSW-124-14-G-S	24	2.79	13.46	8.13	<b>1.32</b>
TSW-136-14-G-S	36	2.79	13.46	8.13	<b>1.98</b>
TSW-150-14-G-S	50	2.79	13.46	8.13	<b>2.20</b>
<b>DOUBLE ROW, STRAIGHT PIN, TIN ON CONTACTS</b>					
TSW-102-14-TD	2	2.79	13.46	8.13	<b>.19</b>
TSW-104-14-TD	4	2.79	13.46	8.13	<b>.38</b>
TSW-106-14-TD	6	2.79	13.46	8.13	<b>.56</b>
TSW-108-14-TD	8	2.79	13.46	8.13	<b>.75</b>
TSW-110-14-TD	10	2.79	13.46	8.13	<b>.94</b>
TSW-112-14-TD	12	2.79	13.46	8.13	<b>1.13</b>
TSW-120-14-TD	20	2.79	13.46	8.13	<b>1.88</b>
TSW-124-14-TD	24	2.79	13.46	8.13	<b>2.25</b>
TSW-136-14-TD	36	2.79	13.46	8.13	<b>3.38</b>
TSW-150-14-TD	50	2.79	13.46	8.13	<b>3.75</b>
<b>SINGLE ROW, STRAIGHT PIN, TIN ON CONTACTS</b>					
TSW-102-14-TS	2	2.79	13.46	8.13	<b>.09</b>
TSW-104-14-TS	4	2.79	13.46	8.13	<b>.19</b>
TSW-106-14-TS	6	2.79	13.46	8.13	<b>.28</b>
TSW-108-14-TS	8	2.79	13.46	8.13	<b>.38</b>
TSW-110-14-TS	10	2.79	13.46	8.13	<b>.47</b>
TSW-112-14-TS	12	2.79	13.46	8.13	<b>.56</b>
TSW-120-14-TS	20	2.79	13.46	8.13	<b>.94</b>
TSW-124-14-TS	24	2.79	13.46	8.13	<b>1.13</b>
TSW-136-14-TS	36	2.79	13.46	8.13	<b>1.69</b>
TSW-150-14-TS	50	2.79	13.46	8.13	<b>1.88</b>



## SAMTEC SERIES QTH 0.50 MM SMT HI-SPEED HEADERS WITH ALIGNMENT PIN MATES WITH QSH SERIES

**SPECIFICATIONS;** Insulation material: Liquid crystal polymer. Contact material: Phosphor bronze. SMT lead coplanarity: .004" (0.10mm) max (30-60), .006" (0.15mm) (90-150). Impedance: 50Ω average. Crosstalk: -19.2 @ 500 MHz. Mating height with QSH: .197 (5.00). Maximum processing temperature: 230°C for 60 seconds.

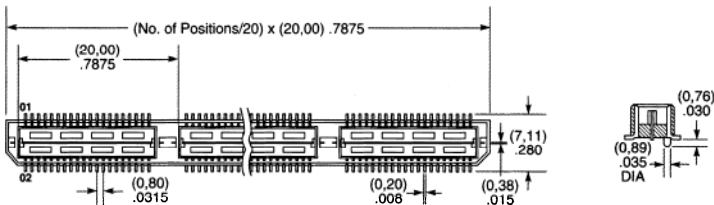
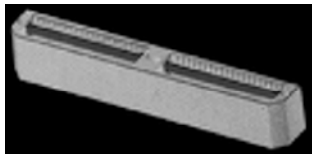
Cat. No.	No. of Contacts Per Row	Contact Plating	Net Price
QTH-030-01-F-D-A	30	Gold Flash	<b>\$6.74</b>
QTH-030-01-L-D-A	30	Gold	<b>7.09</b>
QTH-060-01-F-D-A	60	Gold Flash	<b>7.71</b>
QTH-060-01-L-D-A	60	Gold	<b>8.11</b>
QTH-090-01-L-D-A	90	Gold	<b>11.15</b>
QTH-120-01-L-D-A	120	Gold	<b>13.51</b>
QTH-150-01-L-D-A	150	Gold	<b>16.89</b>



## SAMTEC SERIES QSH 0.50 MM SMT HI-SPEED SOCKETS WITH ALIGNMENT PIN MATES WITH QTH SERIES

**SPECIFICATIONS:** Insulation material: Liquid crystal polymer. Contact material: Phosphor bronze. Plating: Au over 50 $\mu$  (1.27 $\mu$ ) Ni. SMT lead coplanarity: .004" (0.10mm) max (30-60), .006" (0.15mm) (90-150). Mating height with QTH: .197 (5.00). Maximum processing temperature: 230°C for 60 seconds.

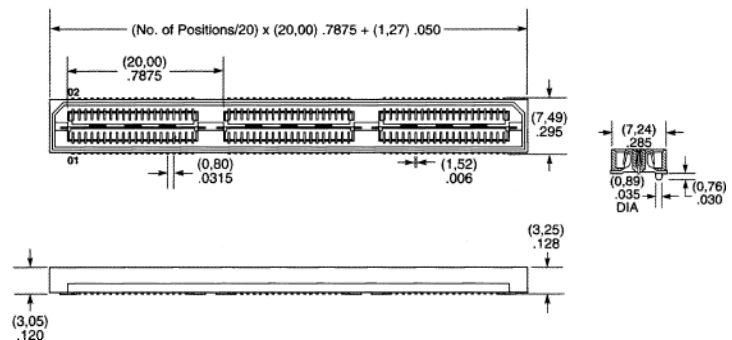
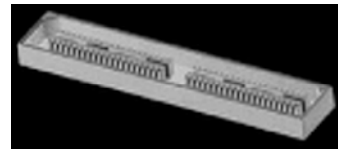
Cat. No.	No. of Contacts Per Row	Contact Plating	Net Price
QSH-030-01-F-D-A	30	Gold Flash	\$6.61
QSH-030-01-L-D-A	30	Gold	6.96
QSH-060-01-F-D-A	60	Gold Flash	7.55
QSH-060-01-L-D-A	60	Gold	7.95
QSH-090-01-L-D-A	90	Gold	10.93
QSH-120-01-L-D-A	120	Gold	13.25
QSH-150-01-L-D-A	150	Gold	16.57



## SAMTEC SERIES QTE 0.80 MM SMT HI-SPEED HEADERS MATES WITH QSE SERIES

**SPECIFICATIONS:** Insulation material: Liquid crystal polymer. Contact material: Phosphor bronze. Plating: Au over 50 $\mu$  (1.27 $\mu$ ) Ni. SMT lead coplanarity: .004" (0.10mm) max (20-60), .006" (0.15mm) (80-100). Maximum processing temperature: 230°C for 60 seconds. All Headers have alignment pins.

Cat. No.	No. of Contacts Per Row	Contact Plating	Mating Height With QSE Series Inches (mm)	Net Price
QTE-020-01-F-D-A	20	Gold Flash	.197 (5.00)	\$4.50
QTE-020-01-L-D-A	20	Gold	.197 (5.00)	4.73
QTE-020-02-F-D-A	20	Gold Flash	.315 (8.00)	4.63
QTE-020-02-L-D-A	20	Gold	.315 (8.00)	4.87
QTE-020-03-F-D-A	20	Gold Flash	.433 (11.00)	5.09
QTE-020-03-L-D-A	20	Gold	.433 (11.00)	5.36
QTE-040-01-F-D-A	40	Gold Flash	.197 (5.00)	6.42
QTE-040-01-L-D-A	40	Gold	.197 (5.00)	6.75
QTE-040-02-F-D-A	40	Gold Flash	.315 (8.00)	6.61
QTE-040-02-L-D-A	40	Gold	.315 (8.00)	6.96
QTE-040-03-F-D-A	40	Gold Flash	.433 (11.00)	7.27
QTE-040-03-L-D-A	40	Gold	.433 (11.00)	7.66
QTE-060-01-F-D-A	60	Gold Flash	.197 (5.00)	7.71
QTE-060-01-L-D-A	60	Gold	.197 (5.00)	8.11
QTE-060-02-L-D-A	60	Gold	.315 (8.00)	8.35
QTE-060-03-F-D-A	60	Gold Flash	.433 (11.00)	8.72
QTE-060-03-L-D-A	60	Gold	.433 (11.00)	9.19
QTE-080-01-L-D-A	80	Gold	.197 (5.00)	9.91
QTE-080-02-L-D-A	80	Gold	.315 (8.00)	10.20
QTE-080-03-L-D-A	80	Gold	.433 (11.00)	11.23
QTE-080-04-L-D-A	80	Gold	.630 (16.00)	15.36
QTE-100-01-L-D-A	100	Gold	.197 (5.00)	11.26
QTE-100-02-L-D-A	100	Gold	.315 (8.00)	11.60
QTE-100-03-L-D-A	100	Gold	.433 (11.00)	12.76



## SAMTEC SERIES QSE 0.80 MM SMT HI-SPEED SOCKETS MATES WITH QTE SERIES

**SPECIFICATIONS:** Insulation material: Liquid crystal polymer. Contact material: Phosphor bronze. Plating: Au over 50 $\mu$  (1.27 $\mu$ ) Ni. SMT lead coplanarity: .004" (0.10mm) max (20-40), .006" (0.15mm) (60-100). Maximum processing temperature: 230°C for 60 seconds. All Sockets have alignment pins.

Cat. No.	No. of Contacts Per Row	Contact Plating	Net Price
QSE-020-01-F-D-A	20	Gold Flash	\$4.41
QSE-020-01-L-D-A	20	Gold	4.64
QSE-040-01-F-D-A	40	Gold Flash	6.29
QSE-040-01-L-D-A	40	Gold	6.63
QSE-060-01-F-D-A	60	Gold Flash	7.55
QSE-060-01-L-D-A	60	Gold	7.95
QSE-080-01-L-D-A	80	Gold	9.72
QSE-100-01-L-D-A	100	Gold	11.04