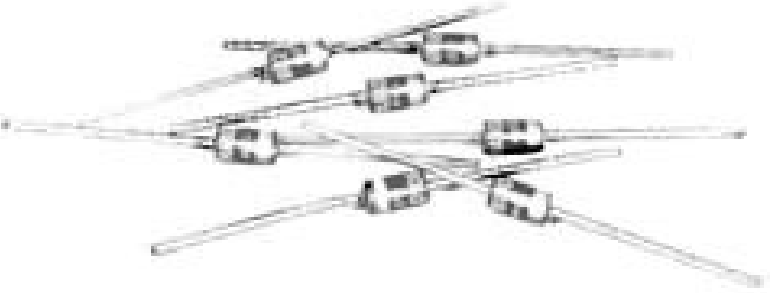




# RAB HAB

## 3 AMPERE AXIAL LEAD RECTIFIERS

- PRV TO 1,000 VOLTS
- FAST RECOVERY (RAB SERIES)
- HIGH TEMPERATURE STABILITY
- HIGH SURGE CAPABILITY



PRV	50V	100V	200V	400V	600V	800V	1000V
HAB STANDARD RECOVERY	HAB005	HAB010	HAB020	HAB040	HAB060	HAB080	HAB100
RAB FAST RECOVERY	RAB005	RAB010	RAB020	RAB040	RAB060	RAB080	RAB100

ELECTRICAL CHARACTERISTICS at $T_A=25^{\circ}\text{C}$ Unless Otherwise Specified	HAB SERIES STANDARD RECOVERY
Max. DC Reverse Current @ PRV and $25^{\circ}\text{C}$ , $I_R$	5 $\mu\text{A}$
Max. DC Reverse Current @ PRV and $100^{\circ}\text{C}$ , $I_R$	150 $\mu\text{A}$
Max. Forward Voltage Drop @ 3.0Amp, $V_F$	1.1 Volts
Ambient Operating Temperature Range, $T_A$	$-55^{\circ}\text{C}$ to $+150^{\circ}\text{C}$
Storage Temperature Range, $T_{STG}$	$-55^{\circ}\text{C}$ to $+150^{\circ}\text{C}$
Max. One -Half Cycle Surge Current, $I_{FM}(\text{Surge}) @ 60\text{Hz}$	300 Amps

ELECTRICAL CHARACTERISTICS at $T_A=25^{\circ}\text{C}$ Unless Otherwise Specified	RAB SERIES FAST RECOVERY
Max. DC Reverse Current @ PRV and $25^{\circ}\text{C}$ , $I_R$	5 $\mu\text{A}$
Max. DC Reverse Current @ PRV and $100^{\circ}\text{C}$ , $I_R$	250 $\mu\text{A}$
Max. Forward Voltage Drop @ 3.0Amp $V_F$	1.4 Volts
Max. Reverse Recovery Time, $T_{rr}$ (Fig.4)	250 nanosec
Ambient Operating Temperature Range, $T_A$	$-55^{\circ}\text{C}$ to $+150^{\circ}\text{C}$
Storage Temperature Range, $T_{STG}$	$-55^{\circ}\text{C}$ to $+150^{\circ}\text{C}$
Max. One - Half Cycle Surge Current, $I_{FM}(\text{Surge}) @ 60\text{Hz}$	240 Amps

EDI reserves the right to change these specifications at any time without notice.

FIG.1

OUTPUT CURRENT vs AMBIENT TEMPERATURE

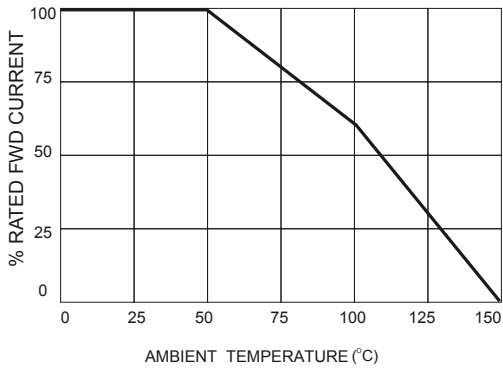


FIG.2

NON-REPETITIVE SURGE CURRENT

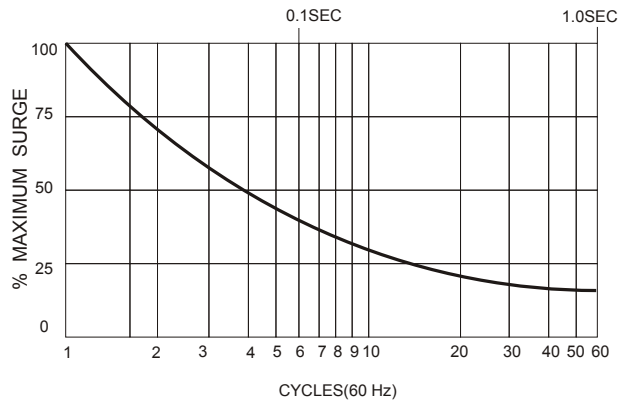
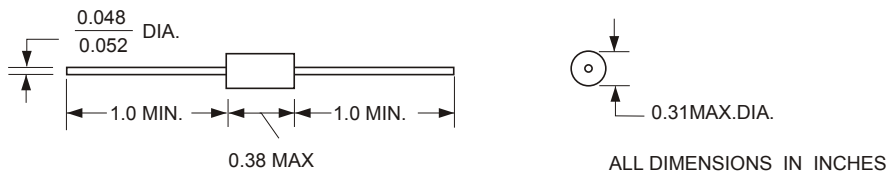


FIG.3

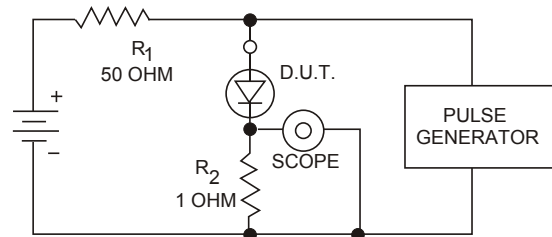
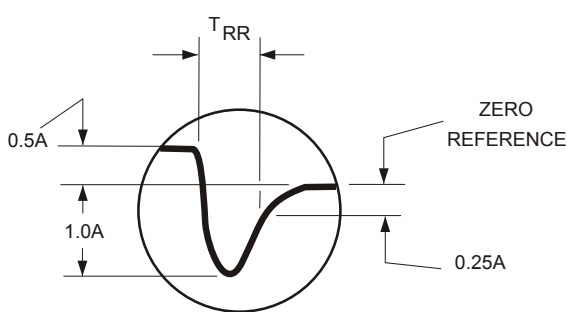


Maximum lead and terminal temperature for soldering, 3/8 inch form case, 5 seconds at 250 °C

TEST CIRCUIT

FIG.4

TYPICAL REVERSE RECOVERY WAVEFORM



R<sub>1</sub>, R<sub>2</sub> NON-INDUCTIVE RESISTORS  
 PULSE GENERATOR-HEWLETT PACKARD 214A OR EQUIV.  
 I<sub>K</sub> REP.RATE, 10 μ SEC. PULSE WIDTH  
 ADJUST PULSE AMPLITUDE FOR PEAK I<sub>R</sub>

**ELECTRONIC DEVICES, INC.** DESIGNERS AND MANUFACTURERS OF SOLID STATE DEVICES SINCE 1951.  
 21 GRAY OAKS AVENUE \* YONKERS, NEW YORK 10710 914-965-4400 \* FAX 914-965-5531 \* 1-800-678-0828  
 e-mail:sales@ediododes.com \* website: http://www.ediododes.com