

SATARAID5™
Serial ATA
RAID5 Management Software
Home Edition



Preliminary Draft
Subject to Change Without Notice

05/7/04

Silicon Image, Inc.
1060 East Arques Ave.
Sunnyvale CA 94085
(408) 616-4000
www.siliconimage.com



Copyright © 2004, Silicon Image, Inc. All rights reserved. No part of this publication may be reproduced, transmitted, transcribed, or translated into any language or computer format, in any form or by any means without prior written permission of:

Silicon Image, Inc.
 1060 East Arques Ave.
 Sunnyvale CA 94085

Silicon Image, Inc. reserves the right to make changes to the product(s) or specifications to improve performance, reliability, or manufacturability. Information furnished is believed to be accurate and reliable, but Silicon Image, Inc. shall not be responsible for any errors that may appear in this document. Silicon Image, Inc. makes no commitment to update or keep current the information contained in this document.

However, no responsibility is assumed for its use; nor any infringement of patents or other rights of third parties, which may result from its use. No liability is assumed as a result of their use or application. No rights under any patent accompany the sale of any such product(s) or information.

Silicon Image, Inc. products are not designed or intended for use in Life Support Systems. A Life Support System is a product or system intended to support or sustain life, which if it fails, can be reasonably expected to result in significant personal injury or death. If Buyer or any of its direct or indirect customers applies any product purchased or licensed from Silicon Image, Inc. to any such unauthorized use, Buyer shall indemnify and hold Silicon Image, Inc., its affiliates and their respective suppliers, harmless against all claims, costs, damages and expenses arising directly or indirectly, out of any such unintended or unauthorized use, even if such claims alleges that Silicon Image, Inc. or any other person or entity was negligent in designing or manufacturing the product.

Specifications are subject to change without notice.

SATARAID5 is a trademark of Silicon Image, Inc. JAVA is a trademark of Sun Microsystems, Inc. Windows is a trademark of Microsoft Corp. for their family of computer operating systems.

Revision History:

Revision	Comment	Date
1.00	Initial creation of document	04/6/04
1.01	Updated for beta release.	04/30/04
1.02	Included "For SATARaid users" section.	05/7/04

1	<u>WELCOME</u>	5
1.1	SATARAID5 FEATURES	5
1.2	FOR SATARAID USERS	5
1.2.1	RAID FUNCTION LIST FOR DIFFERENT VERSIONS OF BIOS AND RAID DRIVER	5
1.2.2	UPGRADE BIOS AND RAID DRIVER	6
2	<u>AN INTRODUCTION TO RAID</u>	7
2.1	DISK STRIPING (RAID 0)	7
2.2	DISK MIRRORING (RAID 1)	7
2.3	DISK MIRRORING AND STRIPING (RAID 10)	7
2.4	PARITY RAID (RAID 5)	8
2.5	JBOD (JUST BUNCH OF DISKS)	8
3	<u>INSTALLING DRIVERS</u>	9
4	<u>JAVA 2 RUNTIME ENVIRONMENT INSTALLATION</u>	10
5	<u>SATARAID5 GUI INSTALLATION</u>	13
6	<u>CREATING AND DELETING LEGACY RAID GROUPS WITH BIOS UTILITY</u>	14
6.1	CREATING RAID GROUPS	16
6.2	DELETING RAID GROUPS	17
6.3	REBUILD RAID1 SET	18
6.4	RESOLVING CONFLICTS	19
6.5	LOW LEVEL FORMATTING	21
6.6	LOGICAL DRIVE INFORMATION	21
7	<u>ALLOCATING PARTITIONS IN WINDOWS</u>	22
7.1	WINDOWS SERVER 2003 & XP & 2000	22
7.1.1	CREATING THE PARTITIONS	23
8	<u>SATARAID5 GUI OVERVIEW</u>	27
8.1	RAID GROUPS AND DEVICE CONFIGURATION WINDOWS	27
8.2	SATARAID5 MENU COMMANDS	29
8.2.1	EXIT	29

8.2.2	CREATE SPARE	29
8.2.3	DELETE SPARE	30
8.2.4	DELETE MEMBER	30
8.2.5	DELETE ORPHAN	31
8.2.6	DEVICE SUMMARY	31
8.2.7	CREATE RAID GROUP	33
8.2.8	REBUILD RAID GROUP	34
8.2.9	DELETE RAID GROUP	34
8.2.10	RAID GROUP SUMMARY	35
8.2.11	TASK MANAGER	37
8.2.12	EVENT LOG	40
8.2.13	I/O STATISTICS	42
8.2.14	RESOURCES	42
8.2.15	CREATE LEGACY RAID GROUP	43
8.2.16	REBUILD LEGACY RAID GROUP	44
8.2.17	DELETE LEGACY RAID GROUP	44
8.2.18	CONVERT LEGACY RAID GROUP	45
8.2.19	CREATE LEGACY SPARE	45
8.2.20	DELETE LEGACY SPARE	45
8.2.21	CONVERT LEGACY SPARE	46
8.2.22	HELP TOPICS	46
8.2.23	ABOUT	47

1 Welcome

Silicon Image's SATARAID5™ software provides Serial ATA RAID0 (Striping), RAID1 (Mirroring), RAID 5 (Parity RAID), RAID10 (Striping and Mirroring), and JBOD (just a bunch of disks) functionality to enhance the industry's leading PCI-to-SATA host controller products. Two major challenges facing the storage industry today are keeping pace with the increasing performance demands of computer systems by improving disk I/O throughput and providing data accessibility in the face of hard disk failures while utilizing full disk capacity. With Silicon Image Serial ATA host controller and SATARAID5, both of these problems are solved.

SATARAID5 software provides a Graphical User Interface (GUI) for easy-to-use configurations of the RAID Groups.

1.1 SATARAID5 Features

- RAID 0, RAID 1, RAID 5, RAID 10, and JBOD Groups are supported.
- Supported OS: Win2000/XP/Server 2003.
- RAID Groups can be created and deleted without exiting Windows.
- Hot Spare and On-line Rebuilding. The spare policy supports testing periodically for a health check of the spare disk. Spare drive can be global or dedicated to a specific RAID group.
- Supports Auto and Manual rebuild policy for a RAID group.
- System GUI Monitoring Utility:
 - Displays/Logs/Alerts Users to Vital RAID Group Information.
 - Manages RAID Group Functions (configures, rebuilds, etc.,).
- Supports the ability to partition and map a segment of disk to a virtual LUN or disk.
- Supports up to two RAID groups. Any excess capacity on disk drives can be formatted as independent logical drives.
- Adjustable Stripe Size for RAID 0, RAID 5, and RAID10.
- Uses the Self-Monitoring, Analysis, and Reporting Technology (SMART) feature in the attached drives for automatic notification of imminent drive failures.
- Employ RAID recovery algorithms to maintain data integrity in the event of a disk failure including bad block management.
- Automatically Selects Highest Available Transfer Speed for All SATA Devices. Supports the following:
 - Data transfer rate up to 150MB/Sec (Sil3114, Sil3124-1), and 300MB/Sec (Sil3124-2)
 - Support up to 4 SATA devices connected to a single controller.
 - ACPI, SATA 1.0 (Sil3114, Sil3124-1), and SATA 2.0 (Sil3124-2)
- Supports drive roaming capability allowing drives from one controller to be moved to another without loss of data.
- Employs a task manager for the scheduling of any RAID or disk management operations including RAID group creation, rebuild, and test.

1.2 For SATARaid Users

If you plan to upgrade to RAID5 driver and/or BIOS, read this section carefully before upgrading BIOS and/or RAID driver. Otherwise, you might get unexpected results.

We do not recommend downgrading from RAID5 driver to the previous (non-RAID5) RAID driver.

1.2.1 RAID Function List for Different Versions of BIOS and RAID Driver

The following list shows possible BIOS and RAID driver combination and RAID functions supported by each combination.

1. Old BIOS with Old RAID Driver
 - Non-RAID Hard Disk
 - Legacy RAID 0 group
 - Legacy RAID 1 group
 - Legacy RAID10 group
 - Legacy spare drive
2. Old BIOS with New RAID Driver
 - Legacy RAID 0 group
 - Legacy RAID 1 group
 - Legacy RAID 10 group
 - Legacy spare drive
 - New RAID 0 group (BIOS will not recognize this)

-
- New RAID 1 group (BIOS will not recognize this)
 - New RAID 5 group (BIOS will not recognize this)
 - New RAID 10 group (BIOS will not recognize this)
 - New spare drive (BIOS will not recognize this)
 - JBOD (BIOS will not recognize this)
3. RAID5 BIOS with Old RAID Driver
 - Legacy RAID 0 group
 - Legacy RAID 1 group
 - Legacy RAID 10 group
 - Legacy spare drive
 4. RAID5 BIOS with New RAID Driver
 - Legacy RAID 0 group
 - Legacy RAID 1 group
 - Legacy RAID 10 group
 - Legacy spare drive
 - New RAID 0 group
 - New RAID 1 group
 - New RAID 5 group
 - New RAID 10 group
 - New spare drive
 - JBOD

1.2.2 Upgrade BIOS and RAID Driver

If you upgrade from old BIOS and old RAID driver to a newer version of BIOS and/or RAID drive, you may lose some functions. Also, non-RAID drives may not be recognized by the new driver. If you are upgrading the software driver from the previous non-RAID5 version, the following is a list of precautions users should realize before upgrading BIOS and RAID driver to a newer version.

1. If you're upgrading to RAID5 driver only:
 - If the boot drive is a non-RAID drive, the system will not boot.
 - No non-RAID drive support.
 - When creating RAID groups through GUI, only those RAID groups created in legacy mode will be recognized by BIOS.
 - The existing RAID 0 or RAID 10 groups (created with previous version of BIOS or GUI) with 4 KB stripe size will not work.
2. If you're upgrading to RAID5 BIOS only:
 - If the boot drive is a non-RAID drive, the system will not boot.
 - No non-RAID drive support.
 - RAID driver will not recognize JBOD and RAID 5 group created by BIOS.
3. If you're upgrading to RAID5 BIOS and RAID5 driver
 - If the boot drive is a non-RAID drive, the system will not boot.
 - No non-RAID drive support.
 - The existing RAID 0 or RAID 10 groups (created with previous version of BIOS or GUI) with 4 KB strip size will not work.

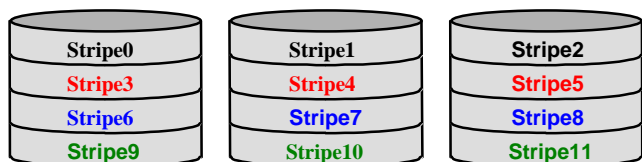
2 An Introduction to RAID

RAID - Redundant Array of Independent Disks

RAID technology manages multiple disk drives to enhance I/O performance and provide redundancy in order to withstand the failure of any individual member, without the loss of data. There are many different methods of implementation for RAID, with each having advantages and disadvantages. Raid levels or set types are given a numerical designator that defines its implementation such as RAID 0 or RAID 1. SATA RAID5 provides support for three RAID Group types: Striped (RAID 0), Mirrored (RAID 1), and RAID 10 Mirrored/Striped. Other RAID types are not supported by SATA RAID5 software and thus are not discussed.

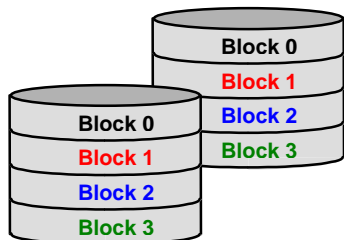
2.1 Disk Striping (RAID 0)

Striping is a performance-oriented, non-redundant data mapping technique. While Striping is discussed as a RAID Group type, it does not provide any fault tolerance. With modern SATA and ATA bus mastering technology, multiple I/O operations can be performed in parallel, enhancing data throughput. Striping arrays use multiple disks to form a larger virtual disk. The figure below illustrates a three-disk stripe set. Stripe one is written to disk one, stripe two to disk two, and so forth. RAID 0 sets can be comprised of two, three, or four drives.



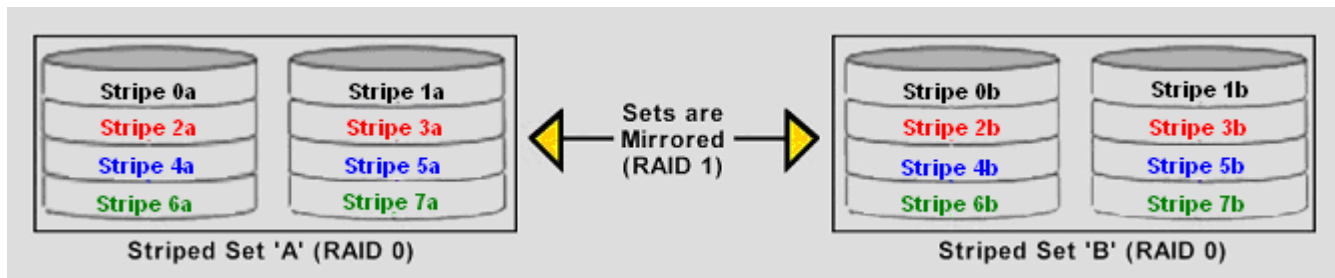
2.2 Disk Mirroring (RAID 1)

Disk mirroring creates an identical twin for a selected disk by having the data simultaneously written to two disks. This redundancy provides instantaneous protection from a single disk failure. If a read failure occurs on one drive, the system reads the data from the other drive. RAID 1 sets are comprised of two drives. A third drive can be allocated as a spare in case one of the drives in the set fails.



2.3 Disk Mirroring and Striping (RAID 10)

RAID 10 combines the features of both RAID 0 and RAID 1. Performance is provided through the use of Striping (RAID 0), while adding the fault tolerance of Mirroring (RAID 1). The implementation of RAID 10 requires four drives. The drives are assigned as two sets of striped pairs.



The data is written to RAID Group A, which is striped (RAID 0). This allows maximum speed. The data is then mirrored to another RAID 0 striped set, which is Set B in the figure above. This provides data redundancy (RAID 1), and thus increased data security.

Under certain circumstances, a RAID 10 set can sustain multiple simultaneous drive failures.

2.4 Parity RAID (RAID 5)

Parity or RAID 5 adds fault tolerance to Disk Striping by including parity information with the data. Parity RAID dedicates the equivalent of one disk for storing parity stripes. The data and parity information is arranged on the disk array so that parity is written to different disks. There are at least 3 members to a Parity RAID set. The following example illustrates how the parity is rotated from disk to disk.



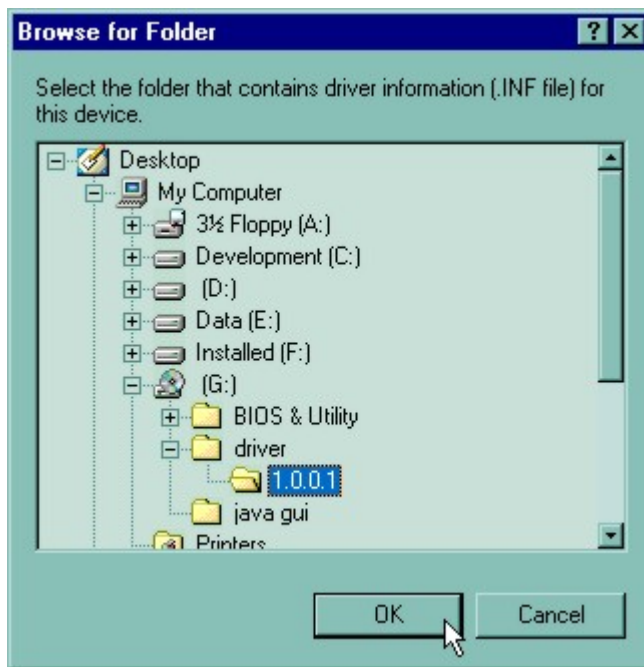
Parity RAID uses less capacity for protection and is the preferred method to reduce the cost per megabyte for larger installations. Mirroring requires 100% increase in capacity to protect the data whereas the above example only requires a 50% increase. The required capacity decreases as the number of disks in the group increases.

2.5 JBOD (Just Bunch of Disks)

The JBOD is a virtual disk that can either be an entire disk drive or a segment of a single disk drive. For home edition, JBOD function only supports one disk.

3 Installing Drivers

Before installing the SATARAID5 software, Silicon Image Serial ATA host adapter driver must be installed. When Windows detects the newly installed SATA host adapter, it will open a Driver Installation Wizard. Click on the Next buttons until the wizard prompts for the location of the driver. Insert the Silicon Image SATA host adapter driver CD into the computer's CD-ROM drive and click on the Browse button. Select the directory on the CD in which the driver resides and click OK.

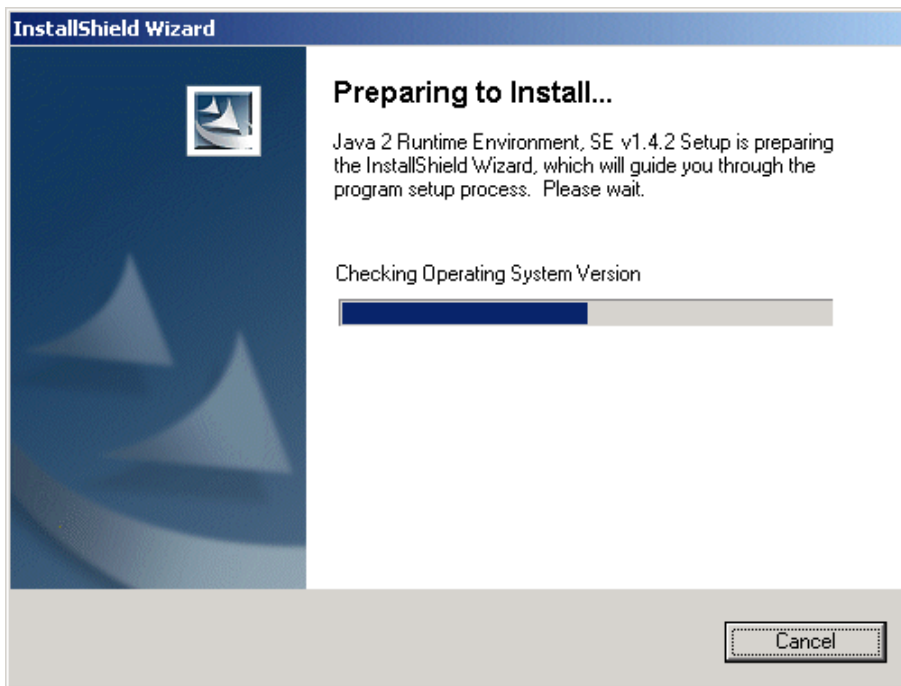


Click the Next button. A window will be displayed to verify proper installation of the host adapter driver. Click Finish. When prompted to restart the computer, click Yes.

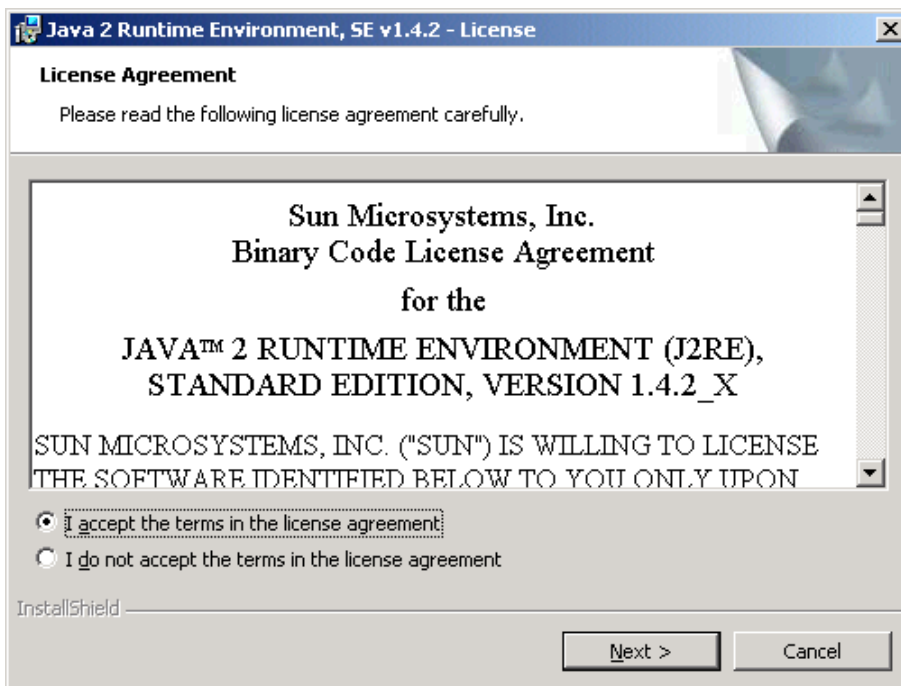
4 JAVA 2 Runtime Environment Installation

The Java 2 Runtime Environment is required for the SATARAID5 GUI. The Java 2 Runtime Installer and executable package must be downloaded from the Sun Microsystems website at <http://java.sun.com/j2se/downloads.html>. The computer must have an Internet connection set up before installation can proceed.

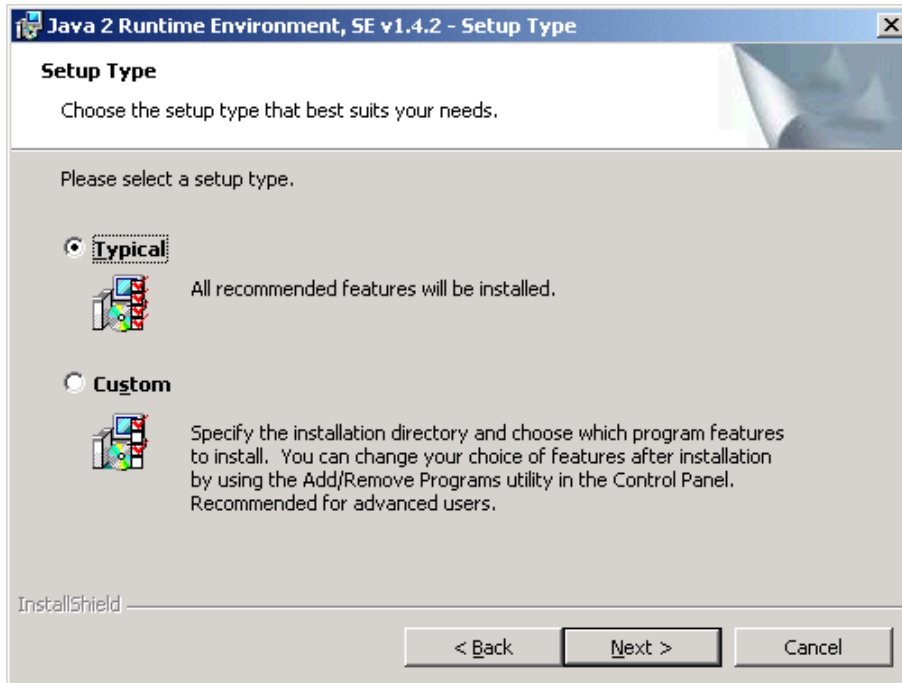
Save the installer file to a known location, such as the My Documents folder. Using Windows Explorer or by clicking on the My Computer icon on the desktop, select the installation file and open it. The installation will begin. The installer program will download the needed files from the Internet.



When a window appears asking for acceptance the license agreement, select *I accept the terms of this license agreement* and click Next.



Choose the Typical setup type and click Next.

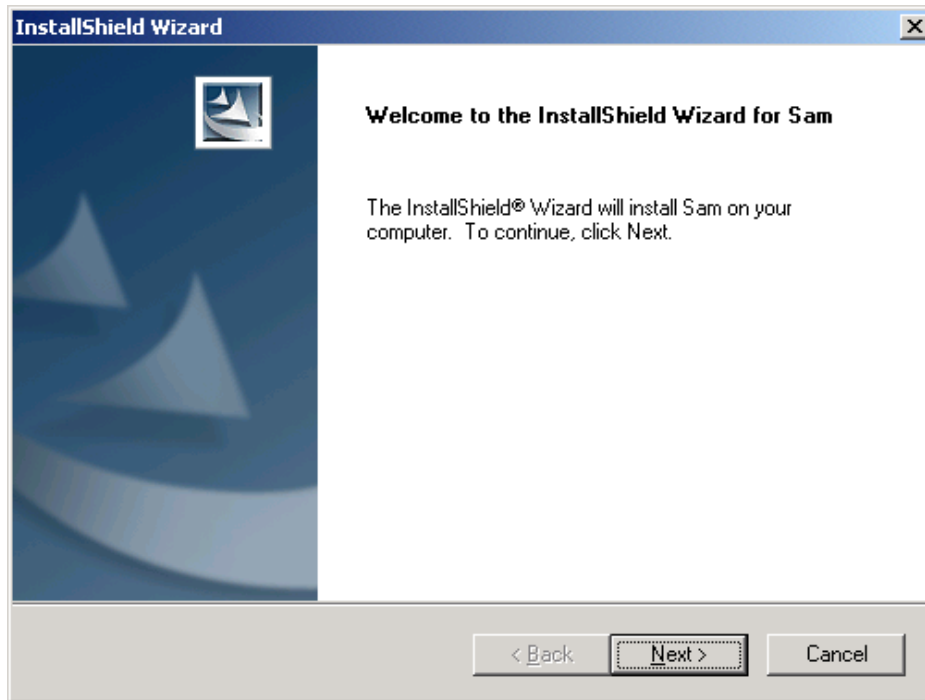


When the installation completes, click Finish. Restart the computer when prompted.

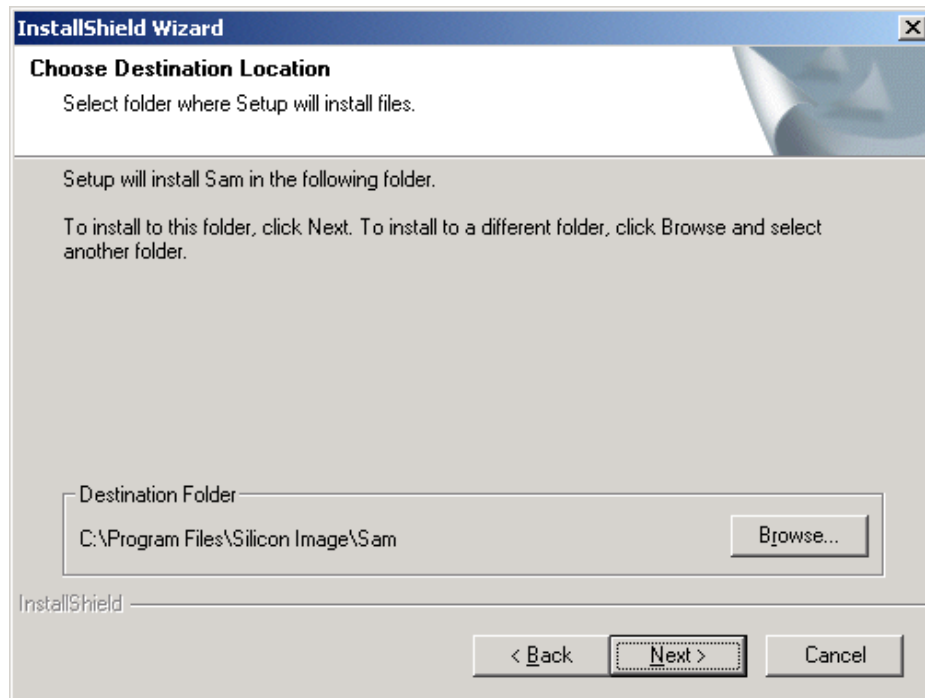
5 SATARAID5 GUI Installation

Insert the Silicon Image SATARAID5 Installation CD into the computer's CD-ROM drive. Using Windows Explorer or by clicking on the My Computer icon on the desktop, display the contents of the CD-ROM. The SATARAID5 GUI Installation program is named **SATARAID5.exe**. Select this file and open it. The installation will begin.

Click the Next button when the Welcome window appears.



Click the Next button to install the SATARAID5 program in the default directory (recommended). An alternate directory may be selected if desired.



Click the Finish button to complete the installation.

6 Creating and Deleting Legacy RAID Groups with BIOS Utility

Legacy RAID sets can be created and managed by either the BIOS utility or the SATARAID5 GUI. New RAID groups must be created and managed by the SATARAID5 GUI. See section 8 SATARAID5 GUI Overview for information on configuring RAID Groups using the SATARAID5 GUI.

During boot up, a screen similar to that below will appear for about 5 seconds. Press CTRL+S or the F4 key to enter the BIOS RAID utility.

```

SiI 3124 SATARaid BIOS Version 6.1.01
Copyright (C) 1997-2004 Silicon Image, Inc.

Press <Ctrl+S> or F4 to enter RAID utility
0  IC35L020AVER07-0      19092 MB
1  Maxtor 4R080L3       78167MB
2  ST330013AS           28629MB
3  Maxtor 4G120H6       117246MB

SiI Raid10 set          IC35L020AVER07-0
                        Maxtor 4R080L3
                        ST330013AS
                        Maxtor 4G120H6
    
```

The RAID Utility menu screen will be displayed. A brief description of each section is presented on the next page.

RAID Configuration Utility – Silicon Image Inc. Copyright (C) 2004

<p>MAIN MENU</p> <ul style="list-style-type: none"> Create RAID set Delete RAID set Rebuild Raid1 set Resolve Conflicts Low Level Format Logical Drive Info <div style="border: 1px solid black; padding: 2px; width: fit-content; margin: 10px auto;">Main Menu – Select Operation</div>	<p>HELP</p> <p>Press "Enter" to create RAID set</p> <div style="border: 1px solid black; padding: 2px; width: fit-content; margin: 10px auto;">Help Window – Context Sensitive</div>																				
<p>PHYSICAL DRIVE</p> <table style="width: 100%; border-collapse: collapse;"> <tr><td>0</td><td>IC35L020AVER07-0</td><td>19092MB</td></tr> <tr><td>1</td><td>Maxtor 4R080L3</td><td>78167MB</td></tr> <tr><td>2</td><td>ST330013AS</td><td>28629MB</td></tr> <tr><td>3</td><td>Maxtor 4G120H6</td><td>117246MB</td></tr> </table> <div style="border: 1px solid black; padding: 2px; width: fit-content; margin: 10px auto;">Physical Drive Properties</div>	0	IC35L020AVER07-0	19092MB	1	Maxtor 4R080L3	78167MB	2	ST330013AS	28629MB	3	Maxtor 4G120H6	117246MB	<p>LOGICAL DRIVE</p> <table style="width: 100%; border-collapse: collapse;"> <tr><td>IC35L020AVER07-0</td><td>19092MB</td></tr> <tr><td>Maxtor 4R080L3</td><td>78167MB</td></tr> <tr><td>ST330013AS</td><td>28629MB</td></tr> <tr><td>Maxtor 4G120H6</td><td>117246MB</td></tr> </table> <div style="border: 1px solid black; padding: 2px; width: fit-content; margin: 10px auto;">Logical Drive Properties</div>	IC35L020AVER07-0	19092MB	Maxtor 4R080L3	78167MB	ST330013AS	28629MB	Maxtor 4G120H6	117246MB
0	IC35L020AVER07-0	19092MB																			
1	Maxtor 4R080L3	78167MB																			
2	ST330013AS	28629MB																			
3	Maxtor 4G120H6	117246MB																			
IC35L020AVER07-0	19092MB																				
Maxtor 4R080L3	78167MB																				
ST330013AS	28629MB																				
Maxtor 4G120H6	117246MB																				
↑↓:Select Menu ESC:Previous Menu Enter:Select Ctrl-E:Exit Command Line																					

Main Menu

The Main Menu in the upper left corner is used to choose the operation to be performed. The selections are:

- Create RAID Group
- Delete RAID Group
- Rebuild RAID1 Set
- Resolve Conflicts
- Low Level Format
- Logical Drive Info

Create RAID Group is used to create a new legacy RAID Set or for allocating legacy spare drives.

Delete RAID Group is used to delete a legacy RAID Set or to deallocate a legacy spare drive.

Rebuild RAID1 Set is used to initiate the rebuild of a RAID 1 set after, for example, a drive in the Group has been replaced.

Resolve Conflicts is used to automatically find the member drives of a RAID set which has been disrupted (physical drives swapped around, for example) and restore the Set to proper operation.

Low Level Format allows a single drive to have its data completely wiped out. Drives assigned to Sets or allocated as spares cannot be low level formatted.

Logical Drive Info shows the current configuration of each RAID set, allocated spare, and unallocated physical drive attached to the SATA host adapter.

These operations are detailed in the pages that follow.

Help Window

This window displays context-sensitive help and status messages.

Physical Drive Information

This window displays the model number and capacities of the drives physically attached to the SATA host adapter.

Logical Drive Information

This window displays a list of devices reported to the system BIOS.

Command Line

The bottom line of the display lists the currently active command keys:

- Up and Down arrows select the menu item or action
- ESC takes the user to the previous menu
- Enter selects the highlighted choice
- Ctrl-E exits the utility

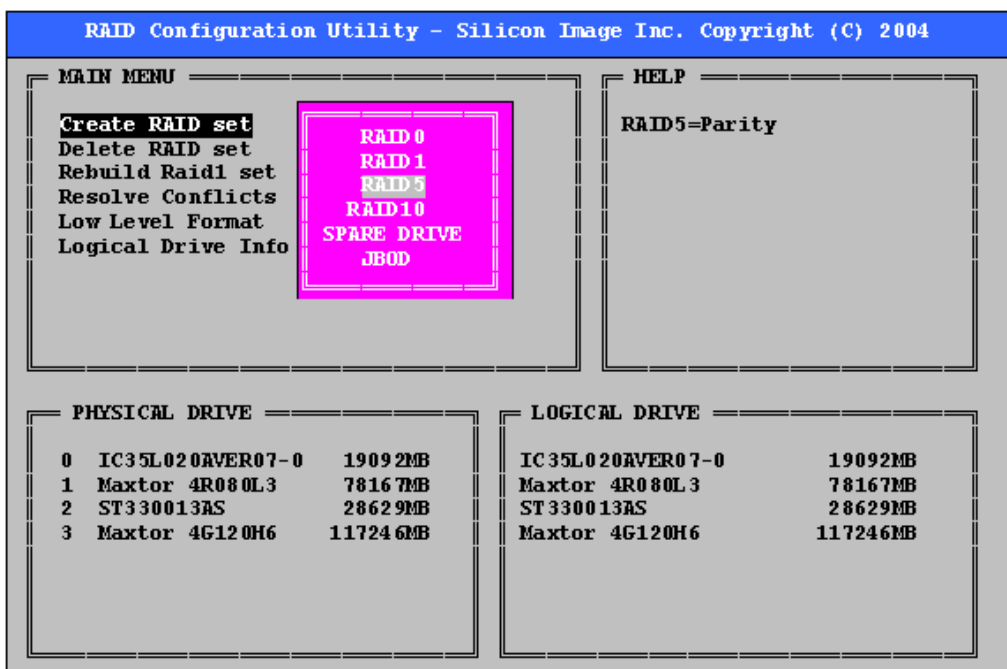
Other keys may be active depending upon the currently selected action.

6.1 Creating RAID Groups

As previously discussed, the Silicon Image SATA host adapter supports RAID 0, 1, 5, 10, and JBOD configurations. The selection of the RAID level to be used should be based upon factors including performance, data security, and number of drives available. It is best to carefully consider the long-term role of the system and plan the data storage strategy appropriately.

Silicon Image has made the creation of RAID sets very simple. They can be created either automatically or to allow the greatest flexibility, manually.

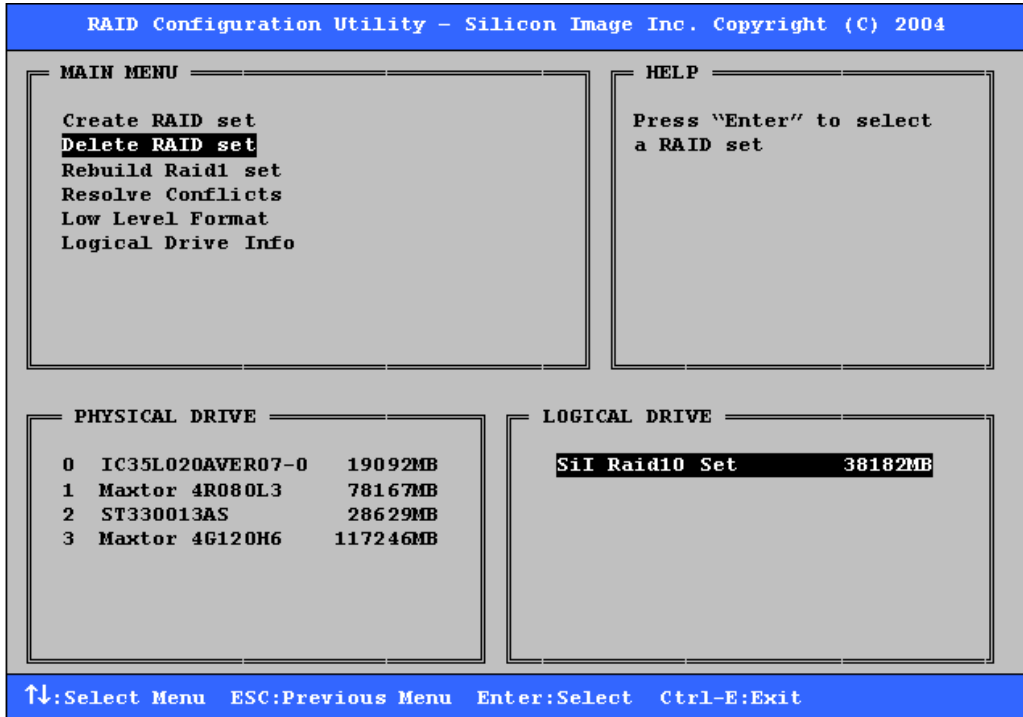
1. Select "Create RAID set"
2. Choose a RAID0 Striped, a RAID1 Mirrored, a RAID5 Parity, or a RAID10 combination set.
3. Select Automatically or Manually configuration of the RAID Set.
4. If manual configuration is selected, the chunk size of Striped Sets can be selected. For Mirrored Sets, the Source and Target drives can be selected.
5. The message "Are You Sure?" will display before completing the configuration. Answer "N" to abort the creation of the new RAID set, or "Y" to proceed with the RAID set creation.



The Create RAID set option is also used to allocate a spare drive or a virtual drive (JBOD). The spare drive can be allocated to the set in the event of a failure of one of the drives in the set. To allocate a spare drive or JBOD, follow the procedure outlined above, choosing "SPARE DRIVE" or "JBOD" for the set type.

6.2 Deleting RAID Groups

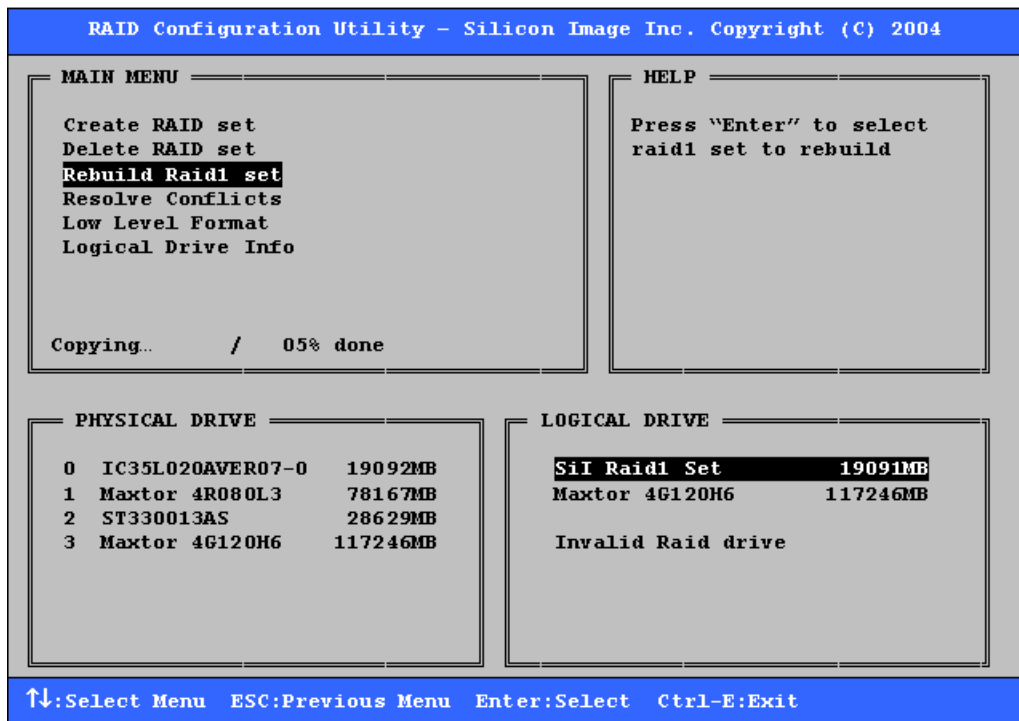
1. To remove one or more RAID sets, select “Delete RAID set”
2. Select the desired set and press Enter.
3. Press “Y” when asked, “Are You Sure?”
4. The drives will be returned to the selection of logical drives from which a new RAID set can be created.



6.3 Rebuild RAID1 Set

This menu selection is used to initiate the copying of data from an existing drive to a replacement drive that has been installed in a RAID 1 set after the failure of one of the members.

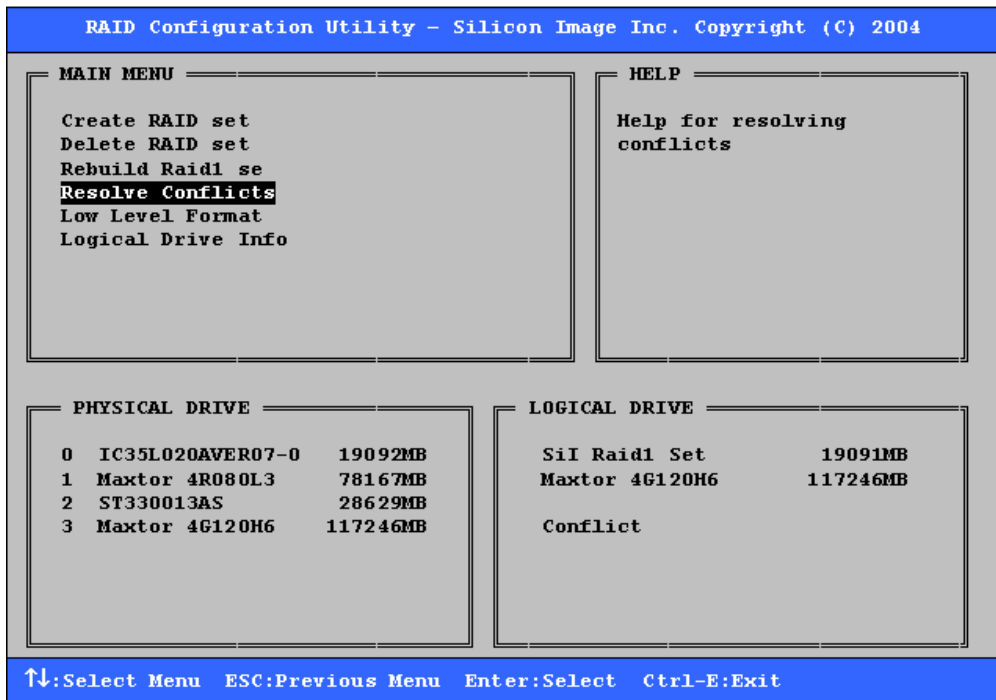
1. Select "Rebuild RAID1 set"
2. Select the desired set and press Enter.
3. Press "Y" when asked, "Are You Sure?"
4. The set will be rebuilt. The status of the rebuild is displayed in the MAIN MENU window.



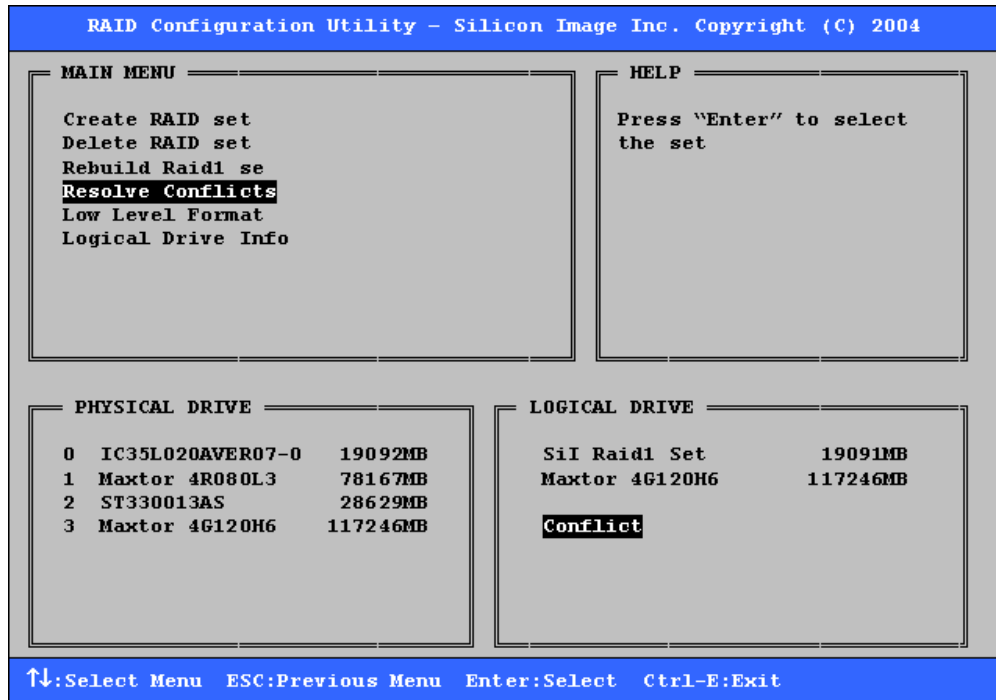
6.4 Resolving Conflicts

When a RAID set is created, the metadata written to the disk includes drive connection information including the channel on the host adapter to which it is connected. If after a disk failure the replacement disk was previously part of a RAID set or used in another system, it may have conflicting metadata, specifically in reference to the drive connection information. If so, this will prohibit the RAID set from being either created or rebuilt. In order for the RAID set to function properly, this old metadata must be first overwritten with the new metadata. To correct this, select “Resolve Conflict” and the correct metadata, including the correct drive connection information, will automatically be written to the replacement disk.

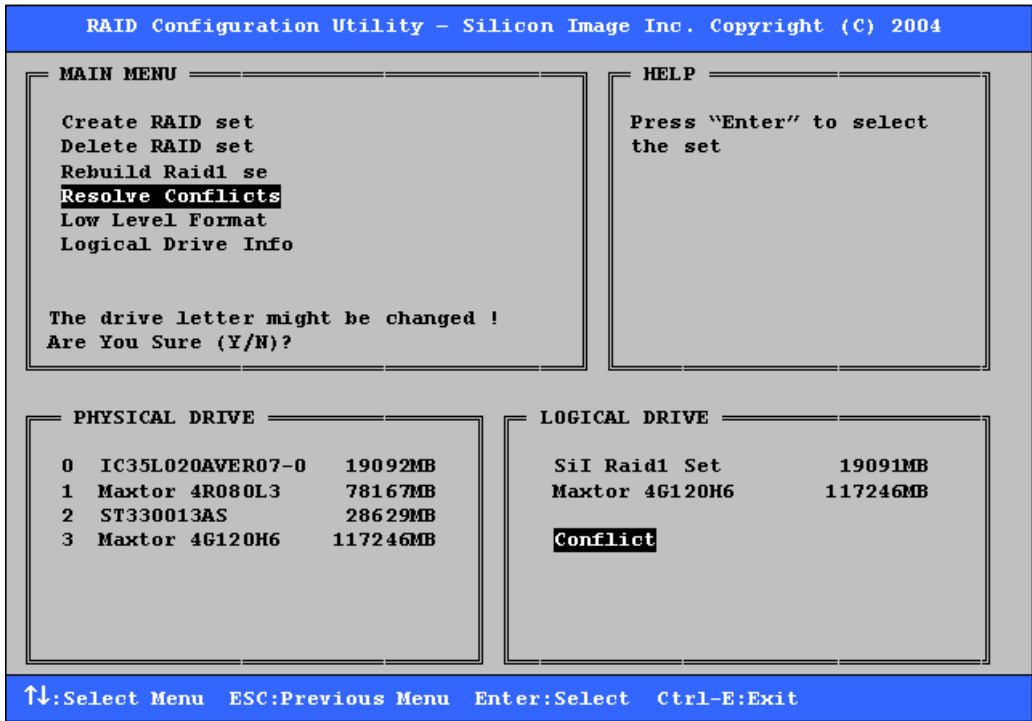
1. Select “Resolve Conflicts” and press Enter.



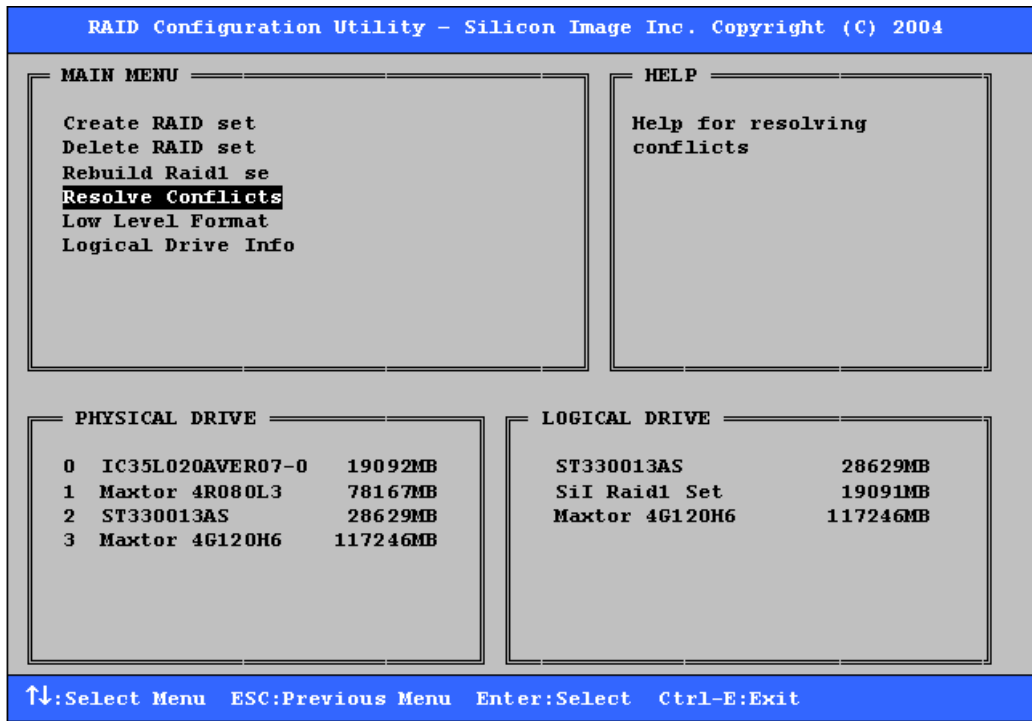
2. Select the “Conflict” entry in the Logical Drive Status window and press Enter.



- Note that some conflict resolutions may result in the drive letter assignment changing; for example the RAID set may have been drive D: but after the conflict resolution, it may become drive E. Be aware of this when performing a conflict resolution. To maintain the same drive lettering, the SATA cables connected to the drives may need to be swapped, or in the case of a SATA-based removable drive unit, the order of the drives within the chassis made need to be changed. Press 'Y' to accept the change and resolve the conflict.



- The conflict will be resolved. The RAID Set will appear in the Logical Drive window.

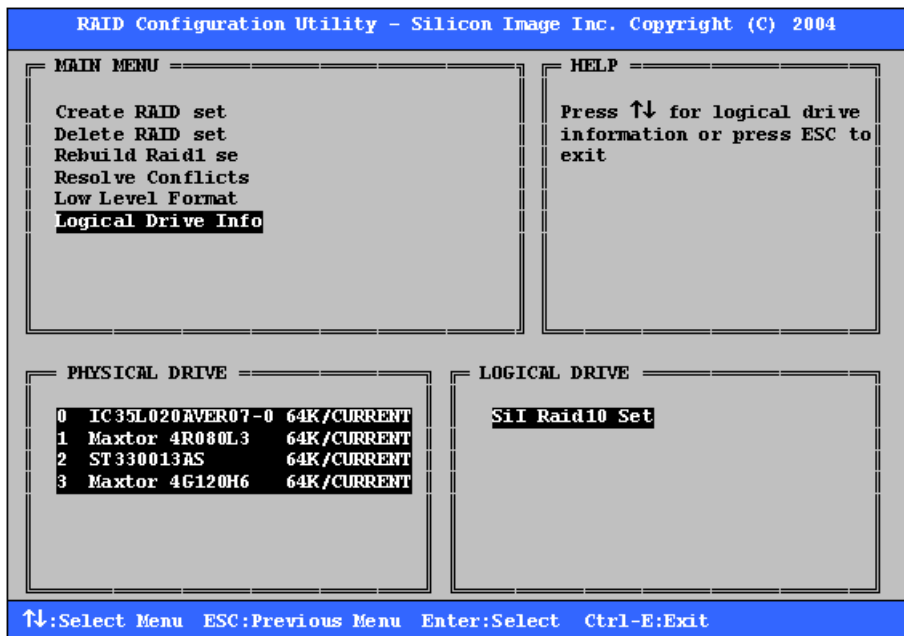
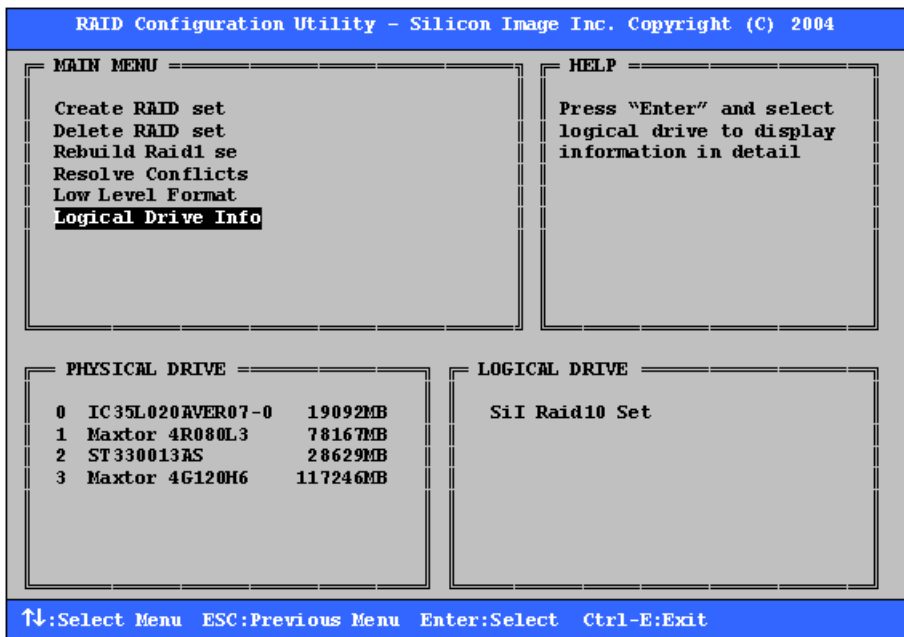


6.5 Low Level Formatting

The Low Level Format menu selection allows the complete erasure of data on a hard drive. This is not an action, which typically needs to be performed as formatting the drive under Windows is usually sufficient to prepare the drive for use.

6.6 Logical Drive Information

This menu item allows the display of the assignment of physical drives within a logical set (RAID set, RAID 1 spare, or unassigned). It is a display-only function. Use the up and down arrow keys to scroll between the drives in the Logical Drive Properties window. Press the ESC key when done viewing logical drive information.



7 Allocating Partitions in Windows

After the Raid groups have been created either using BIOS RAID utility or SATARAID5 GUI, the Raid group must have a partition defined on it, then the Raid group must be formatted in preparation for use under Windows.

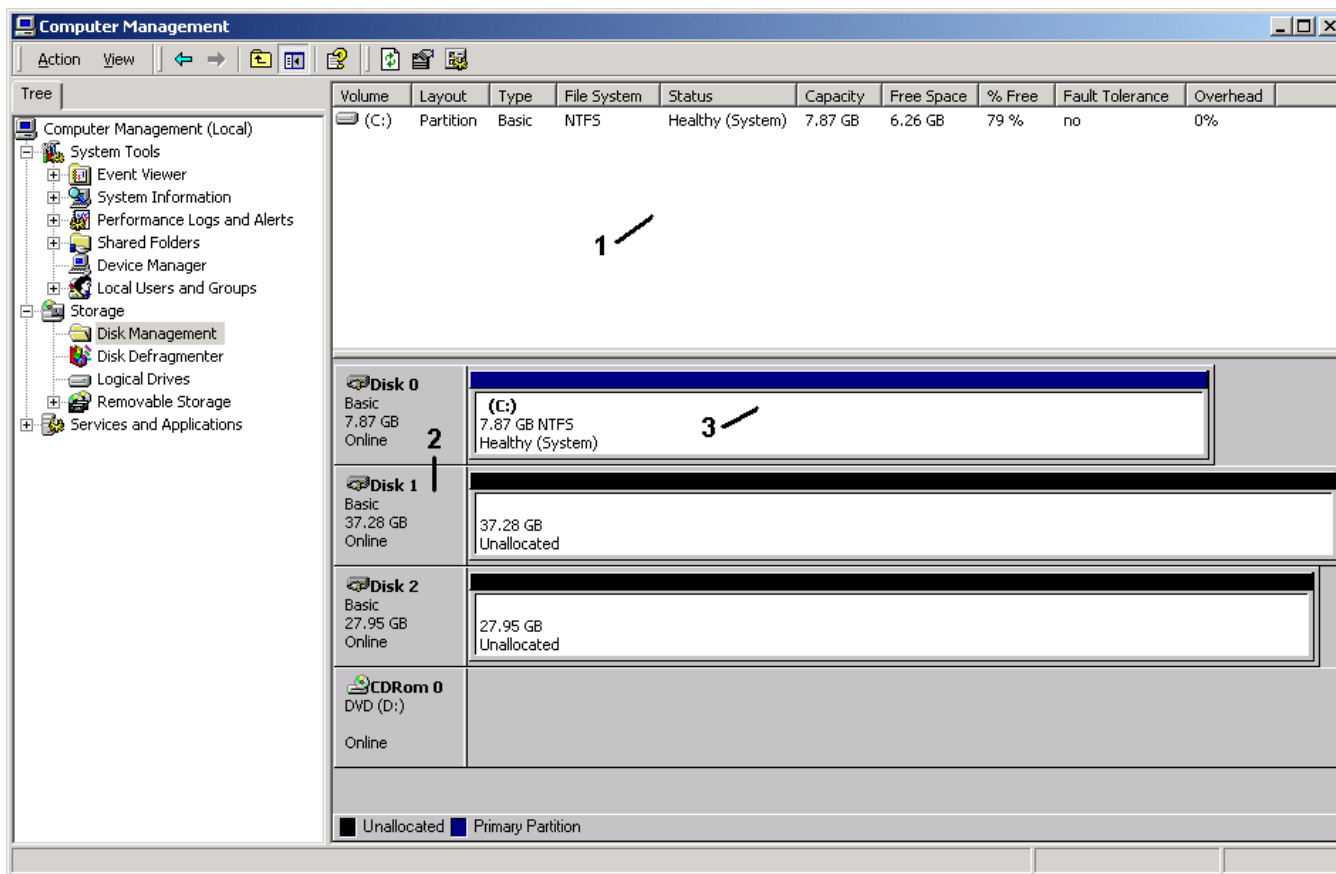
Windows XP, 2000, and Server 2003 use the Disk Management utility that is part of the Operating System. There are enough nuances that make it important to follow the procedure specific to the Operating System.

7.1 Windows Server 2003 & XP & 2000

Before creating any partitions, RAID groups must first be created using the BIOS RAID Utility or the SATARAID5 GUI. Once the sets have been created, allow the system to load Windows. Once Windows is running, open the Disk Management window located at:

Control Panel> Administrative Tools> Computer Management> Storage> Disk Management

A window similar to the following should appear:



This window has three main sections:

- 1) System listing of all formatted and available disks/RAID Groups.
- 2) Report of physical connection of disks/RAID Groups.
- 3) Report of partition status, disk letter, and volume name.

In the physical connection window, every disk should report as:

Basic

Disk Size (the actual available disk space will be reported here)

Online

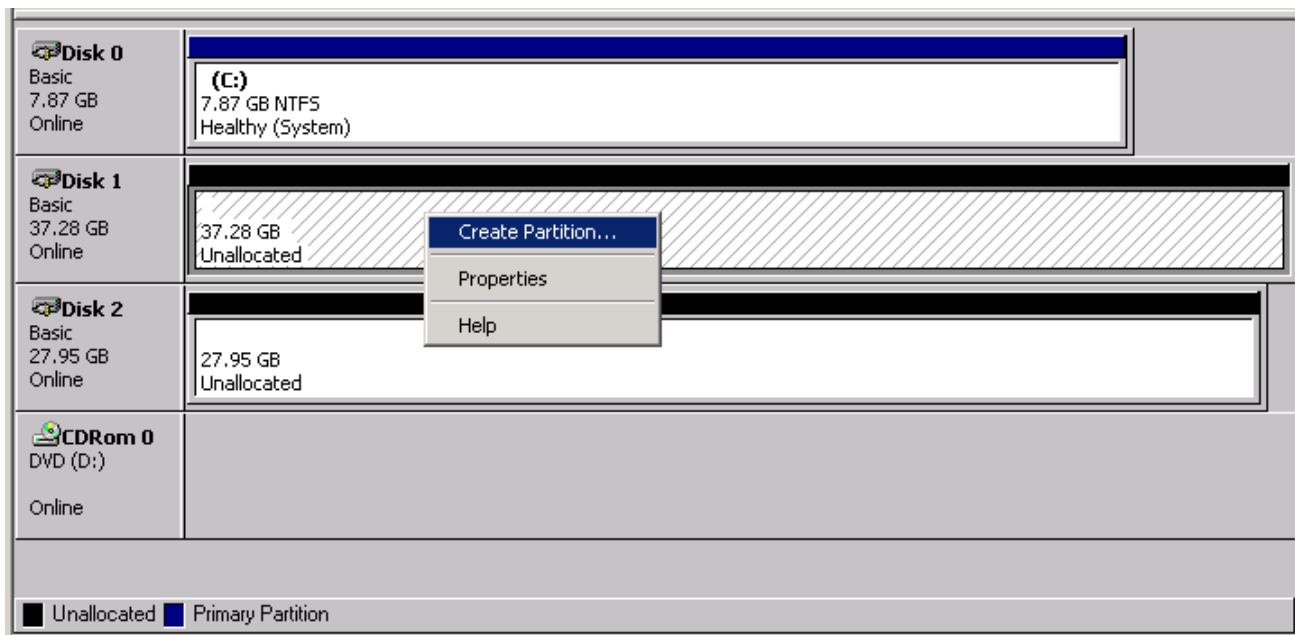
Instead of “Basic,” a disk may also report as either “Unknown” or “Dynamic.” If the disk reports as “Unknown” right-click on the disk icon and click “Write Signature.” A window will appear with the disk in question (all “Unknown” disks may appear in this window). Make sure the box next to each disk is checked, and then click OK. The disk should now report as “Basic.”

If a disk reports as “Dynamic,” right-click on the icon of that disk, and click on “Revert to Basic Disk...” Within seconds the disk should report as Basic.

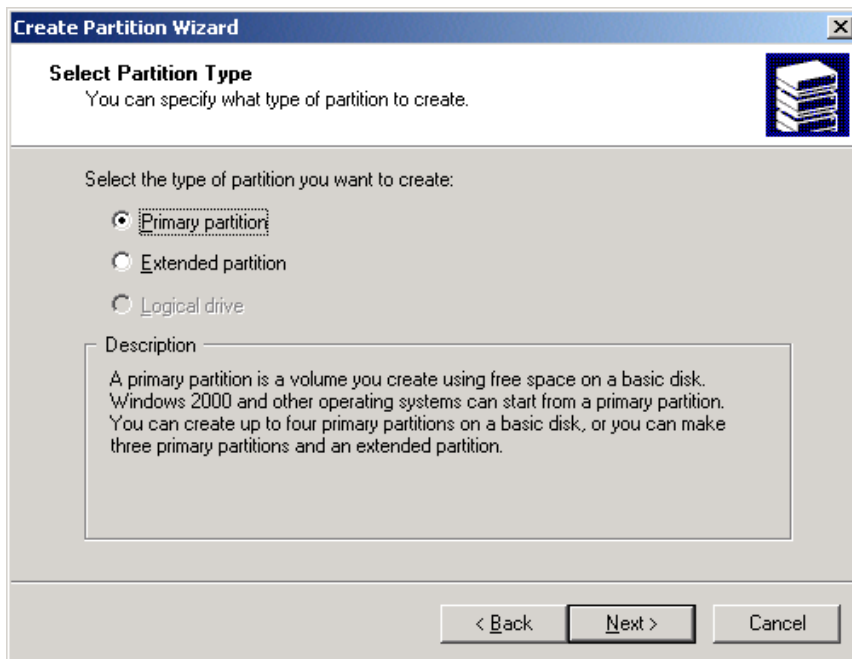
7.1.1 Creating the Partitions

In the Report of physical connection of disks/RAID Groups section, the order in which the drives are displayed corresponds directly to the order the Sets appear in the BIOS. Therefore, the first Unallocated Partition represents Set 1, and so on.

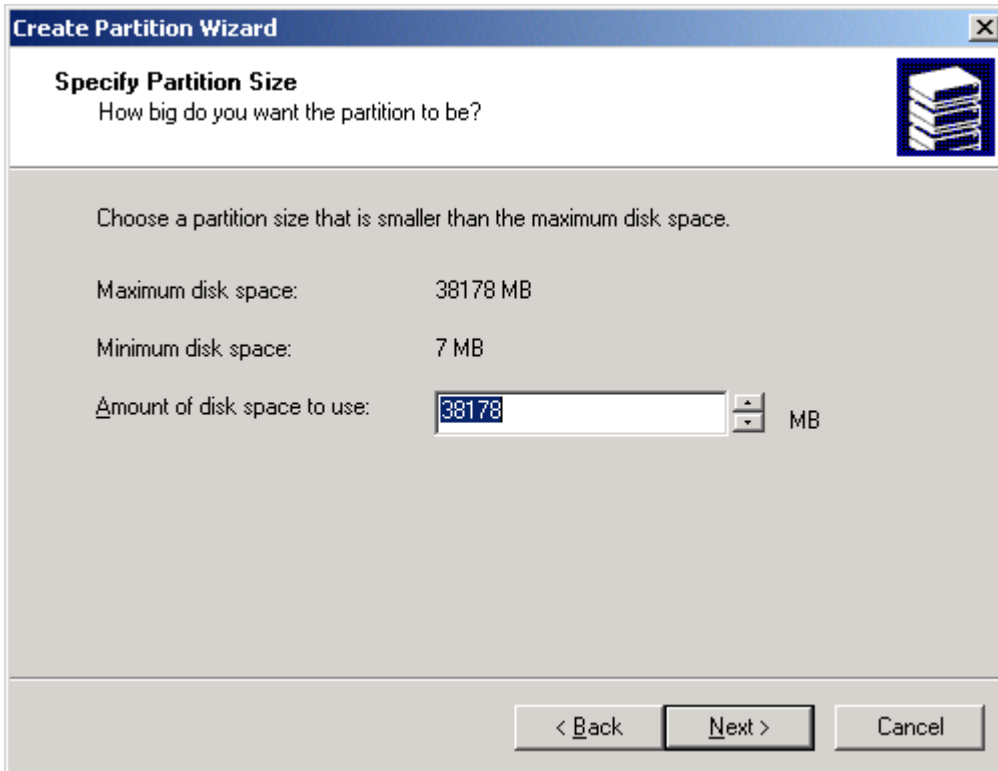
1. In this example, there are two disks with unallocated partitions. Right-click on the partition of the first disk and click on “Create Partition...”



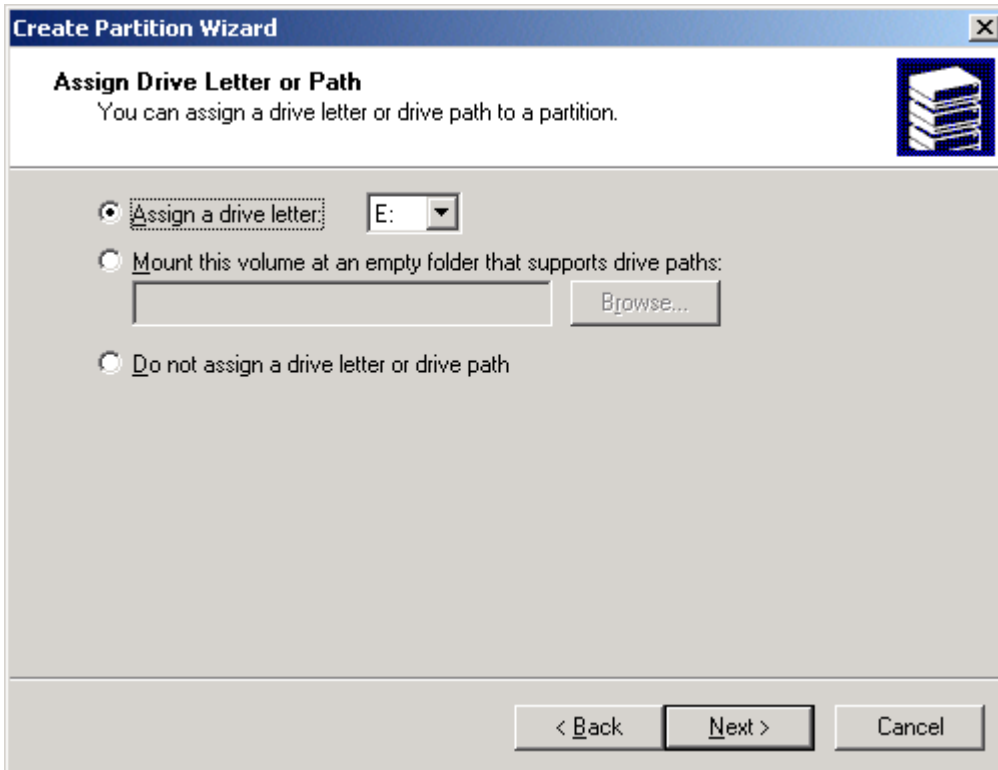
2. The “Create Partition Wizard” should appear. The first window is an introductory window to the Wizard. Click Next.
3. The second window designates the partition type. Choose primary partition and click Next.



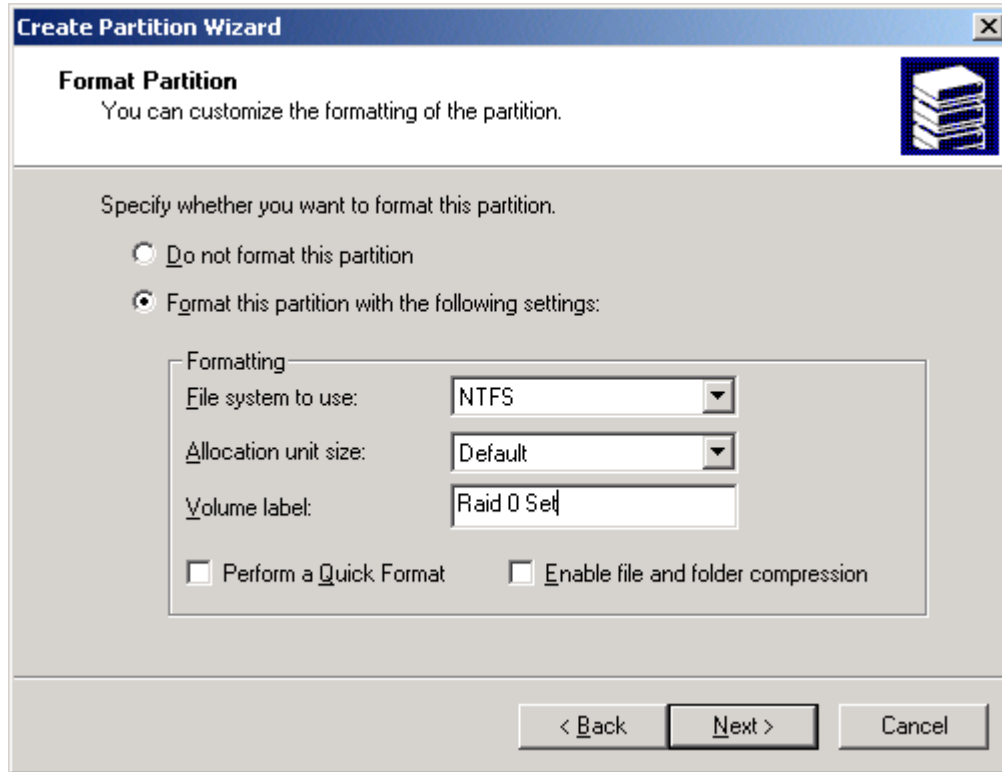
- 4. The third window designates the partition size. Since this is a Striped RAID set utilizing 2 disk drives, the size of the partition will be approximately twice the size of the smallest single disk drive. Click Next.



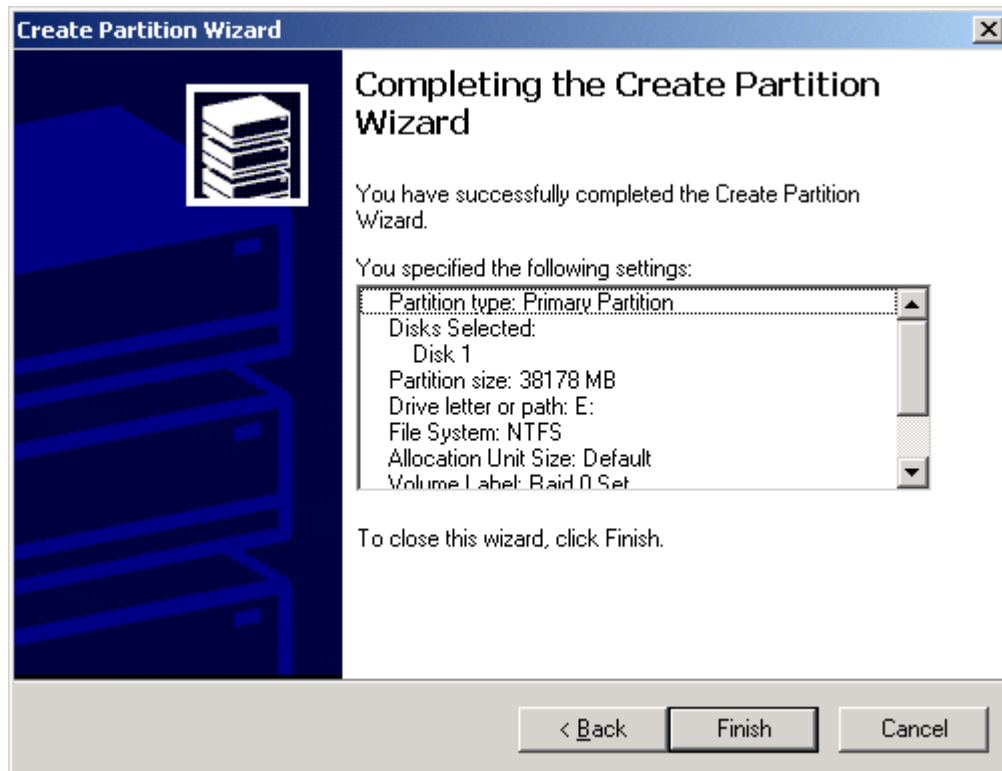
- 5. The fourth window designates the drive letter of the partition. Change the drive letter if desired. Click Next.



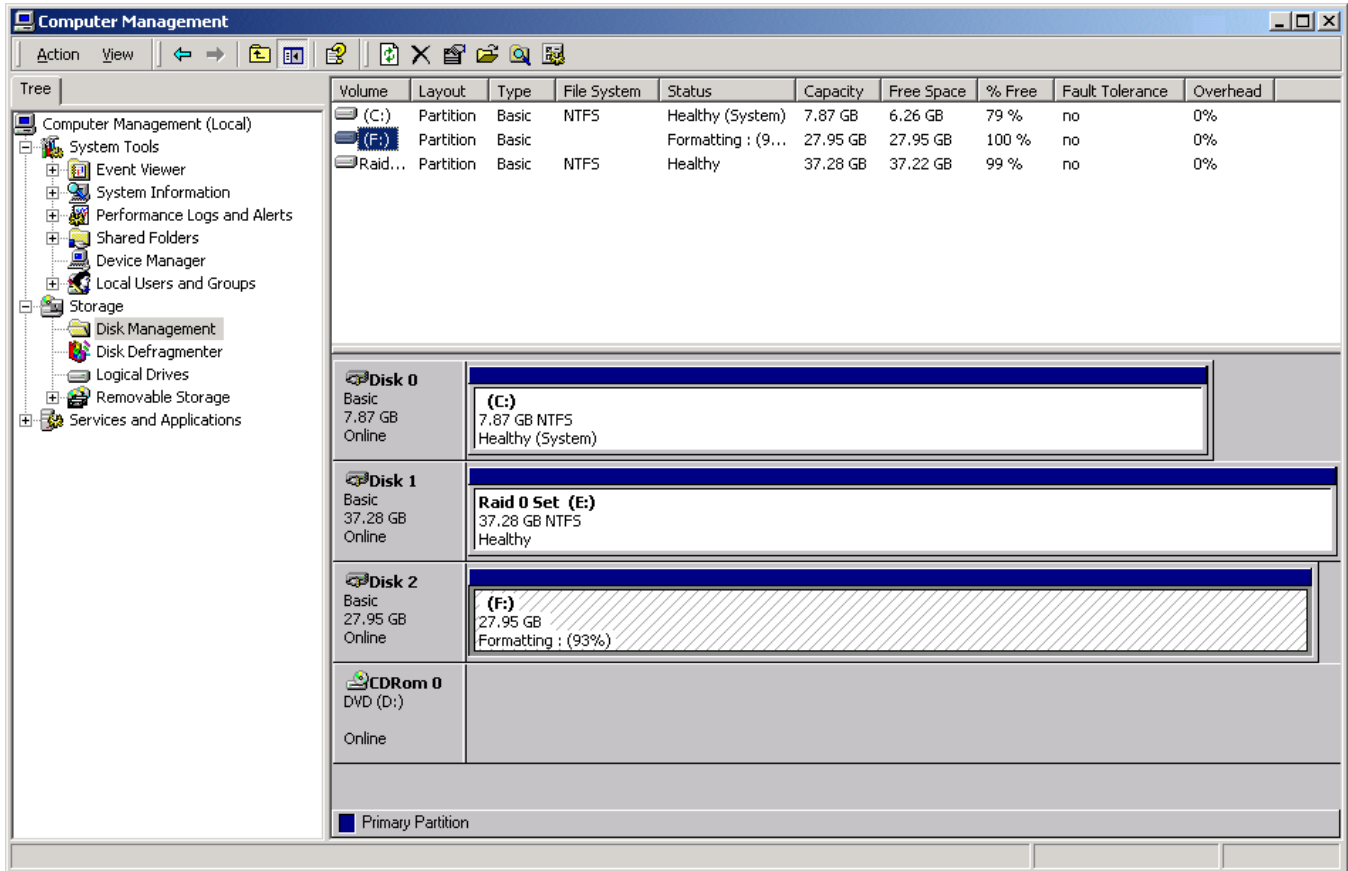
- The next window allows the volume label to be set and selection of the type of formatting to take place upon the creation of the partition. Make sure the *Format this partition. . .* radio button is selected. Name the volume as desired (suggestions are generic names such as STRIPED SET or something specific to use such as FINANCIAL, CRITICAL, MISCELLANEOUS, etc.). It is recommended to use the default NTFS for the file system. Click Next.



- The last window is a summary window listing all of the selections made. After verifying that everything is correct, click Finish.



The status of the newly created partition in the Disk Management window should change to Formatting and the percentage complete will be displayed. Depending upon the size of the partition, the format process may take several minutes. When complete, the status will change to “Healthy” and the name and drive letter will be updated. Once the disk reports Healthy, it appears in the listing in System Listing section with all of its pertinent information as well.

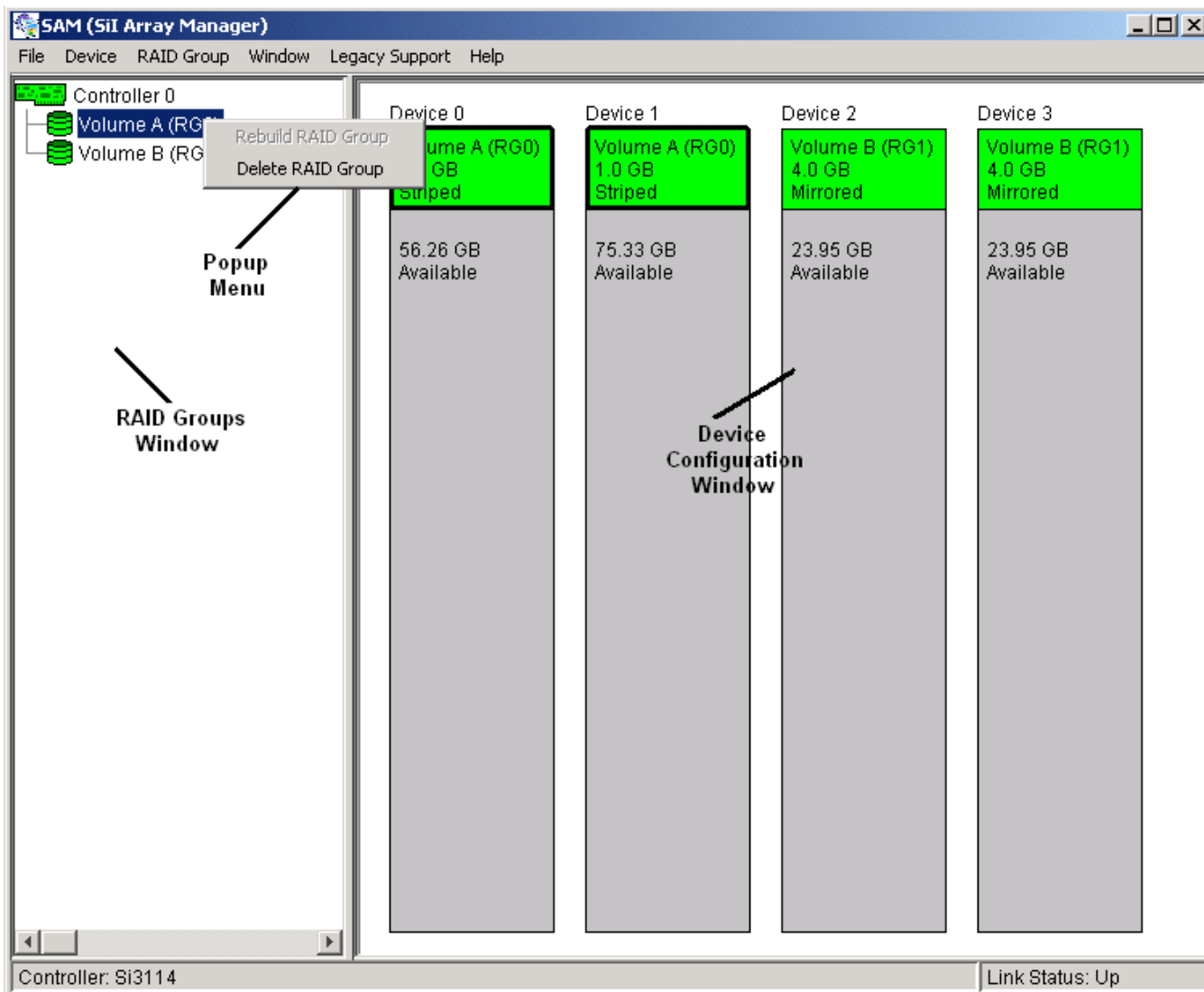


Repeat the above procedure as needed for any other partitions. Close the Data Management window by clicking on the small boxed “X” in the top right corner of the window. Click on the “My Computer” icon on the Desktop. The new drives will be visible and properly named. The new disks are available for use.

8 SATARAID5 GUI Overview

The SATARAID5 GUI Installation program configures the SATARAID5 GUI to automatically start when Windows is started. If the SATARAID5 GUI does not automatically start or is closed by the user, choose the SATARAID5 program from the Start Menu to launch the GUI.

The SATARAID5 GUI monitors the system's RAID Group. The main window will display:



8.1 RAID Groups and Device Configuration Windows

The RAID Groups window identifies SATA host adapters and configured RAID groups. Selecting each RAID group in the RAID Groups window, members consisting of the RAID group will be highlighted in the Device Configuration window.

Right clicking on each node in the RAID Group window, a popup menu will be displayed to let user select action to be performed for the selected controller or RAID group.

The Device Configuration window identifies all physical drives and their partitions. A physical drive can be partitioned to several portions and each portion can be a RAID group member, a spare drive, or a virtual drive.

The following is another example of the main window showing different configuration. One RAID 10 (mirrored-striped) group, one RAID 1 (mirrored) group, and one global spare drive are configured.

The screenshot shows the SAM (SiI Array Manager) interface for Controller 0. The left sidebar lists the RAID groups: Volume A (RG0) and Volume B (RG1). The main area displays four devices with their configurations:

Device	RAID Group	Capacity	Configuration	Available Space
Device 0	Volume A (RG0)	1.0 GB	Mirrored Striped	52.26 GB
Device 1	Volume A (RG0)	1.0 GB	Mirrored Striped	75.33 GB
Device 2	Volume B (RG1)	4.0 GB	Mirrored	22.95 GB
Device 3	Volume B (RG1)	4.0 GB	Mirrored	22.95 GB

Additional information shown in the interface includes a 4.0 GB Global Spare on Device 0 and a 1.0 GB Mirrored Striped volume on Device 2. The status bar at the bottom indicates "Controller: Si3114" and "Link Status: Up".

8.2 SATARAID5 Menu Commands

The Main menu commands are shown below

File	Device	RAID Group	Window	Legacy Support	Help
Exit	Create Spare	Create RAID Group	Task Manager	Create Legacy RAID Group	Help Topics
	Delete Spare	Rebuild RAID Group	Event Log	Rebuild Legacy RAID Group	About
	Delete Member	Delete RAID Group	I/O Statistics	Delete Legacy RAID Group	
	Delete Orphan	RAID Group Summary	Resources	Convert Legacy RAID Group	
	Device Summary			Create Legacy Spare Delete Legacy Spare Convert Legacy Spare	

The commands are documented on the pages that follow.

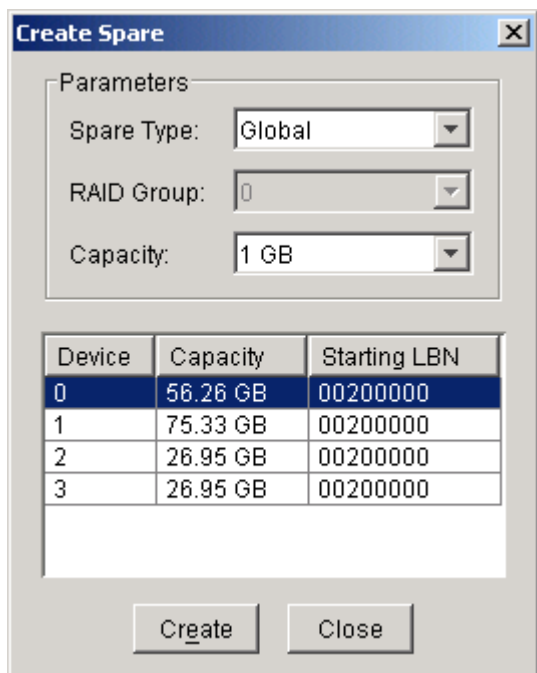
8.2.1 Exit

This command terminates the SATARAID5 program.

8.2.2 Create Spare

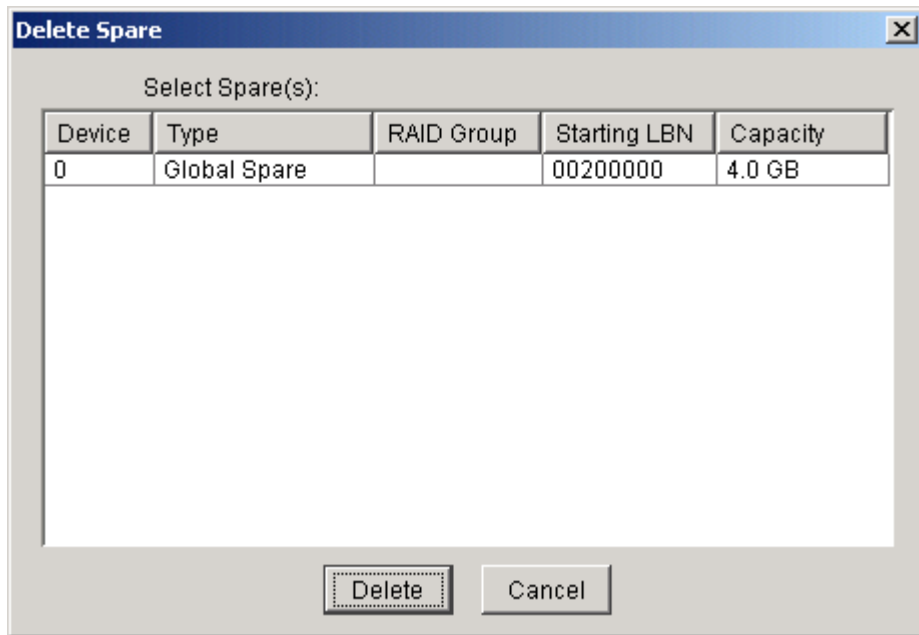
This command displays a dialog box to let user create Spare Drive, user needs to select the following parameters:

- Spare Type: Global -- the spare drive is for all RAID groups in the system.
- Dedicated -- the spare drive is dedicated to the specified RAID group.
- RAID Group: Select the RAID group to which this spare drive is dedicated. This parameter is enabled only when Dedicated spare type is selected.
- Capacity: Select from a list of spare drive size, current options are from 128 MB to 100 GB and MAX.
- Device: Select one device segment from the available device segment list



8.2.3 Delete Spare

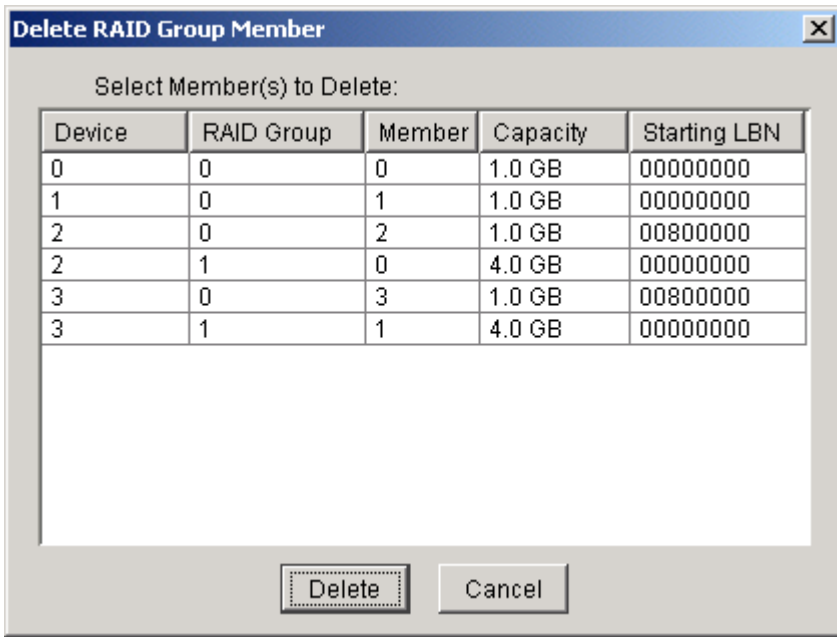
This command displays a dialog box to let user choose one or more Spare Drives to delete.



8.2.4 Delete Member

This command displays a dialog box to let user choose RAID groups' members to delete. Since RAID 0 is not fault-tolerant, RAID 0 members will not be shown in the list.

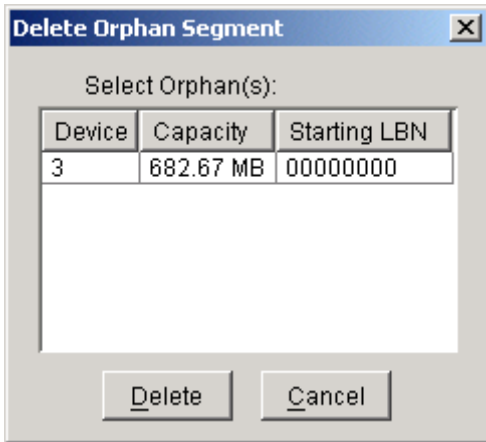
Note: delete RAID group member will reduce the RAID group to be a non-fault-tolerant RAID group.



8.2.5 Delete Orphan

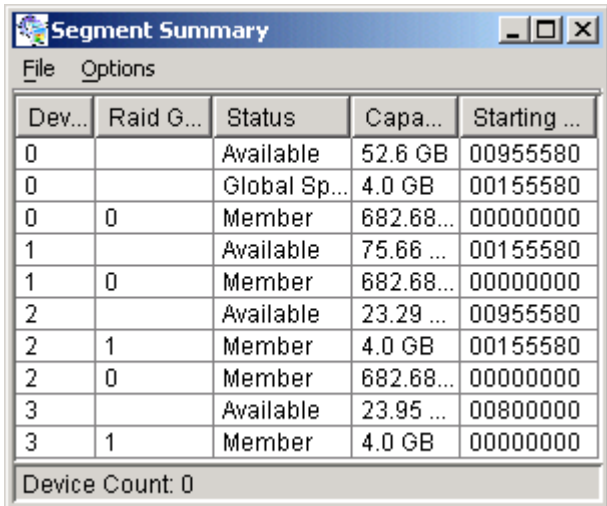
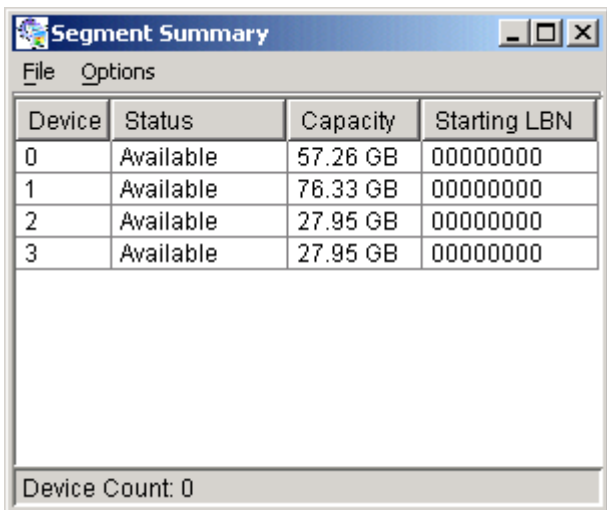
An orphan device segment is part of a RAID group that cannot access another device segment within the same RAID group. When a member of a RAID group fails in a sever manner (such as a loss of power or a complete hard disk failure), it becomes an orphan.

This command displays the Delete Orphan Segment window to show all orphan segments and allow user to delete selected orphan segments.



8.2.6 Device Summary

This command displays the Segment Summary window to show all physical devices' segments.



The Segment Summary window has it's own menu bar. All options available via the menu bar are shown below

- File**
- Options**
- Exit
- Sorting...
- Fields...

Exit

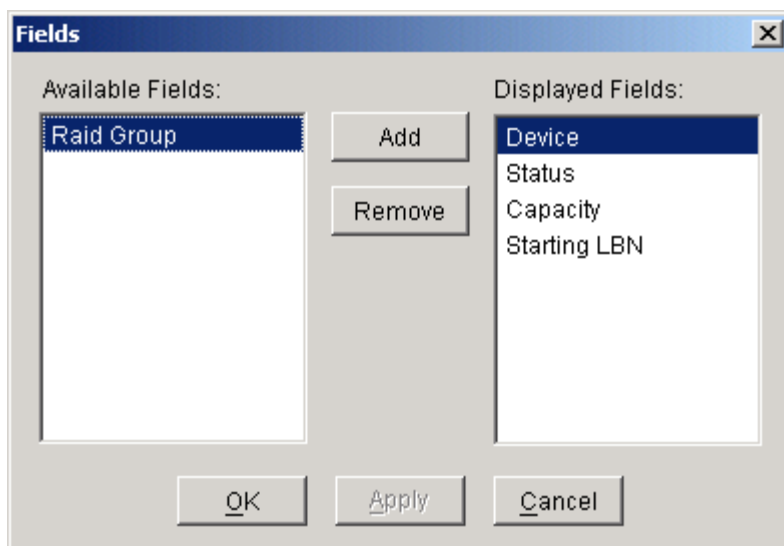
This command closes the Task Summary window.

Sorting

Not implemented yet.

Fields

This command displays a dialog box to let user choose which fields will be shown in the Segment Summary window.



8.2.7 Create RAID Group

This command displays a dialog box to let user create RAID group, user needs to specify the following parameters:

RAID Group Label: Provide a name for the RAID group

RAID Group: Select a group ID from the available ID list. Since the maximum number of RAID groups is limited to 8 so group ID can be from 0 to 7.

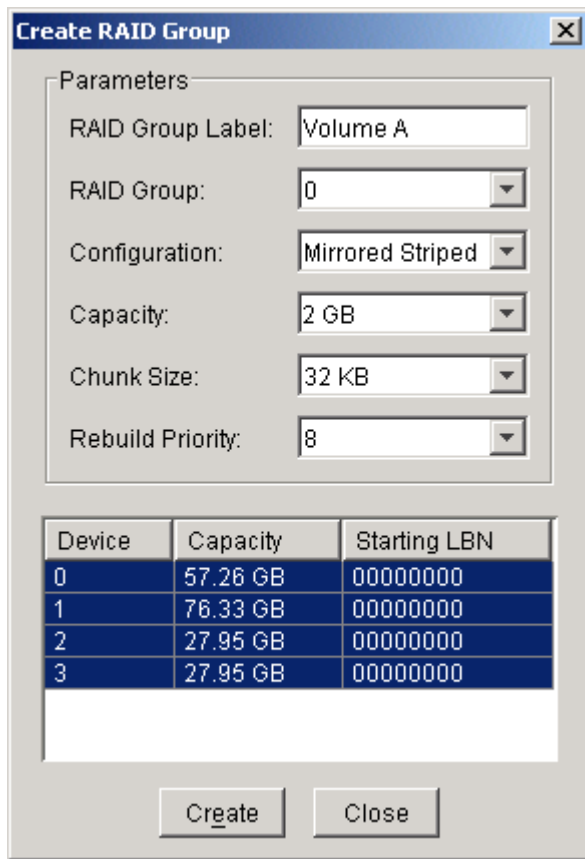
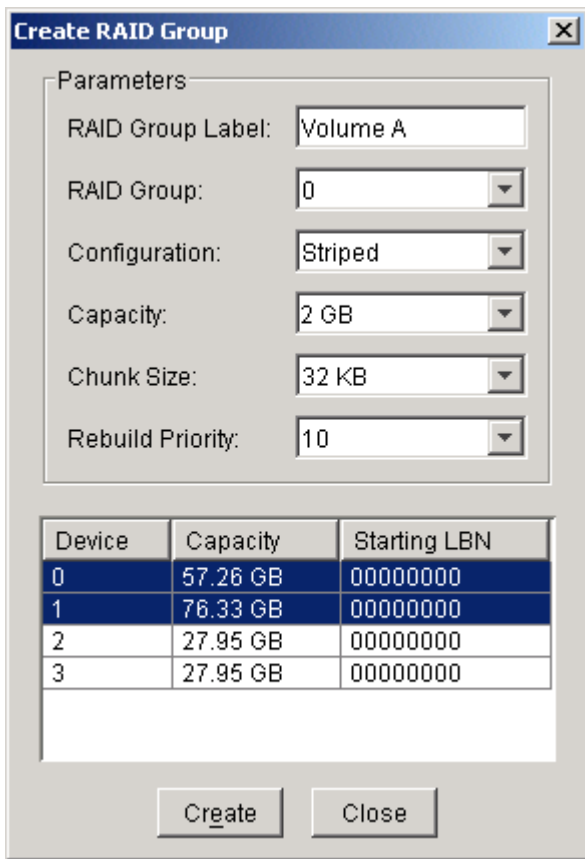
Configuration: Contiguous (for virtual disk)
 Striped (for RAID 0)
 Mirrored (for RAID 1)
 Mirrored Striped (for RAID 10)
 Parity RAID (for RAID 5)

Capacity: Select from a list of RAID group size, current options are from 256 MB to 100 GB, and MAX.

Chunk Size: Select one from the available list: 8, 16, 32, 64, 128 (KB). RAID 1 set and virtual disk do not require this.

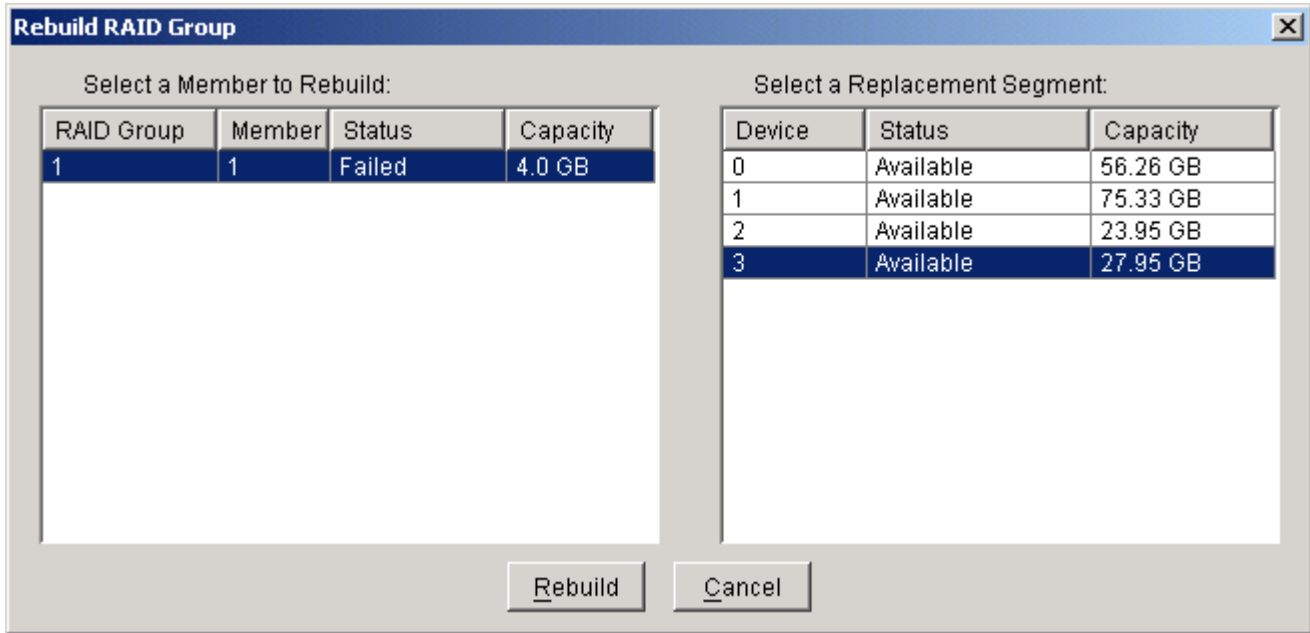
Rebuild Priority: Select one from the available list: 1 to 10. RAID 0 set and virtual disk do not require this.

Devices: Select RAID member devices from the available device segment list



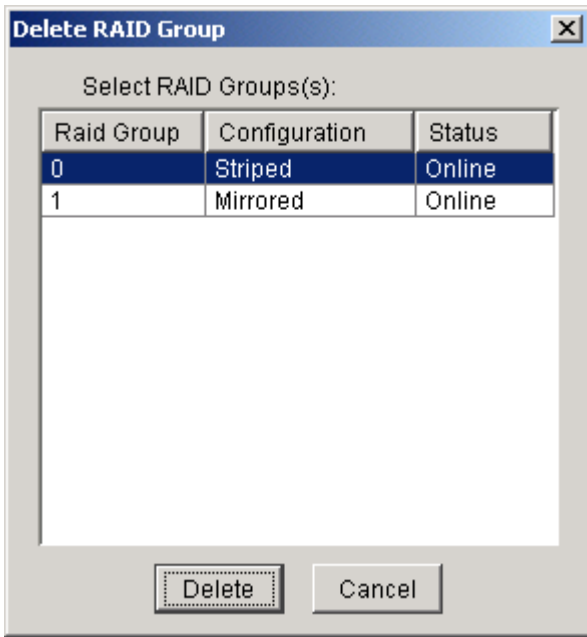
8.2.8 Rebuild RAID Group

This command displays a dialog box to let user choose a replacement segment to rebuild a non-fault tolerant RAID group.



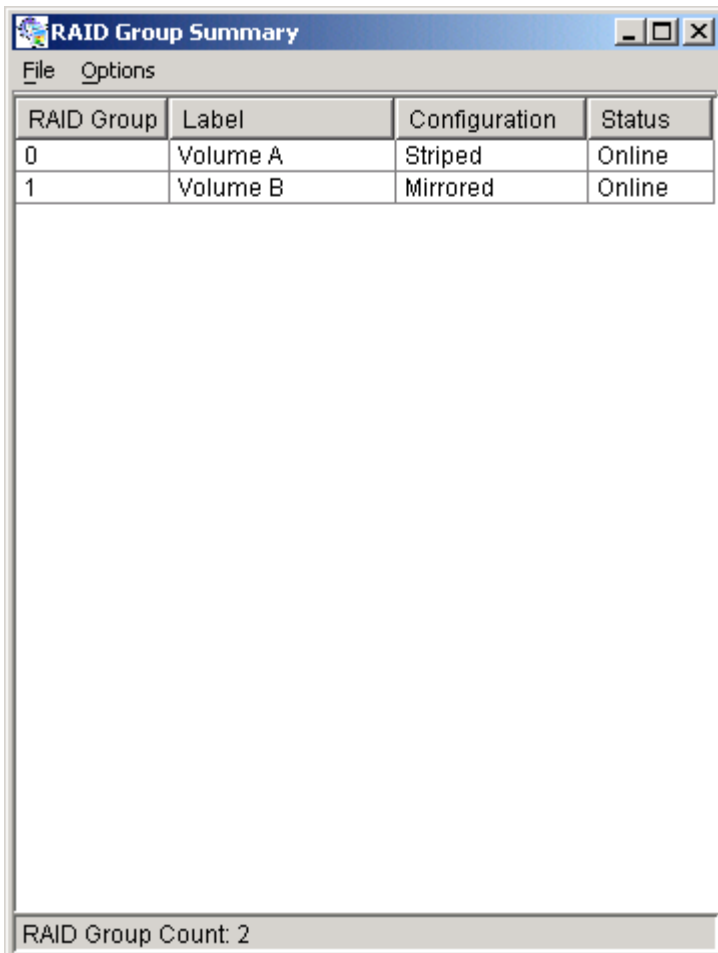
8.2.9 Delete RAID Group

This command displays a dialog box to let user choose RAID groups to delete.



8.2.10 RAID Group Summary

This command displays a dialog box to show all RAID groups' group ID, configuration, and status.



The RAID Group Summary window has its own menu bar. All options available via the menu bar are shown below
 SATAraid User's Manual

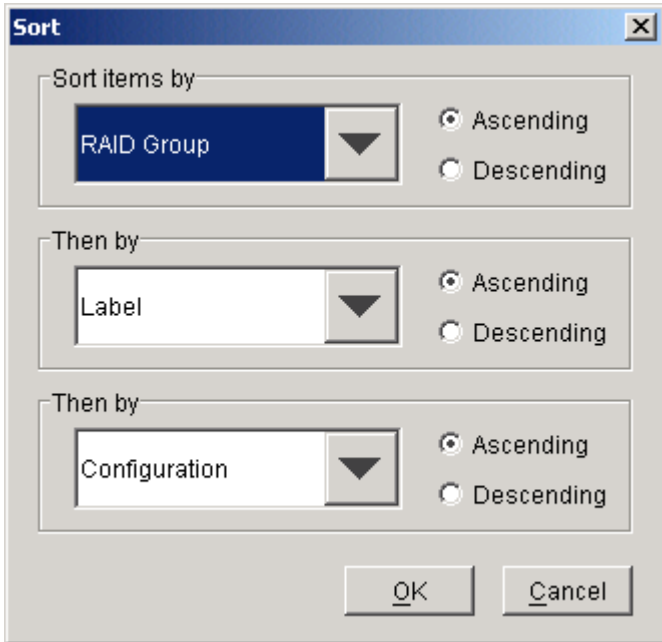
File	Options
Exit	Sorting... Fields...

Exit

This command closes the RAID Group Summary window.

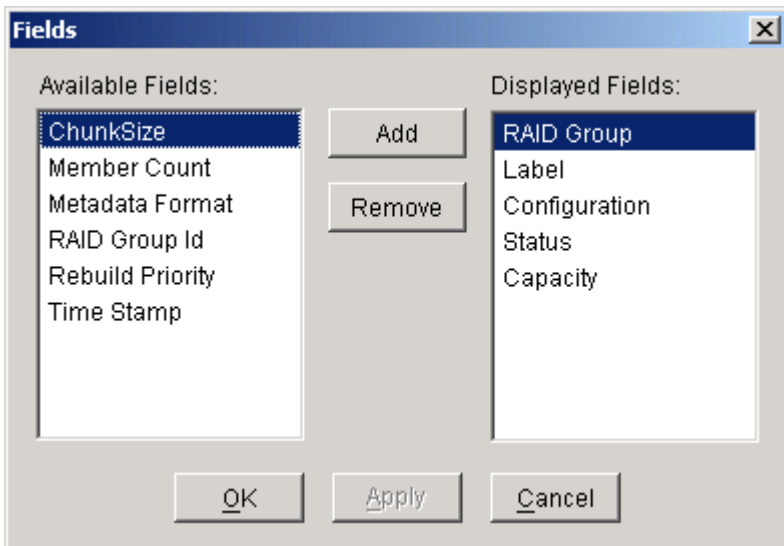
Sorting

This command displays a dialog box to let user choose up to 3 items to sort RAID group items in the RAID Group list.



Fields

This command displays a dialog box to let user choose which fields will be shown in the RAID Group Summary window.



8.2.11 Task Manager

This command displays the Task Manager window. The Task Manager window lists all RAID and disk management tasks that have been started and/or done. This window provides user the ability to schedule any RAID and disk management operations including RAID group creation, rebuild, and test.

Operation	Parameters	Start Time	End Time
Create RAID Group	Raid Group 0	4/7/04 2:25:32 PM	4/7/04 2:25:32 PM
Create Spare	Raid Group 0	4/7/04 2:26:38 PM	4/7/04 2:26:38 PM
Delete RAID Group	Raid Group 0	4/7/04 2:27:34 PM	4/7/04 2:27:34 PM
Delete Spare	Raid Group 0	4/7/04 2:27:39 PM	4/7/04 2:27:39 PM
Create RAID Group	Raid Group 0	4/7/04 2:30:31 PM	4/7/04 2:30:31 PM
Delete RAID Group	Raid Group 0	4/7/04 2:32:21 PM	4/7/04 2:32:21 PM
Create RAID Group	Raid Group 0	4/7/04 2:34:31 PM	4/7/04 2:34:31 PM
Delete RAID Group	Raid Group 0	4/7/04 2:34:48 PM	4/7/04 2:34:48 PM
Create RAID Group	Raid Group 0	4/7/04 2:40:53 PM	4/7/04 2:40:54 PM
Create Spare	Raid Group 0	4/7/04 2:41:59 PM	4/7/04 2:41:59 PM
Delete RAID Group	Raid Group 0	4/7/04 2:42:34 PM	4/7/04 2:42:34 PM
Delete Spare	Raid Group 0	4/7/04 2:42:45 PM	4/7/04 2:42:45 PM
Create RAID Group	Raid Group 0	4/7/04 2:43:02 PM	4/7/04 2:43:02 PM
Create Spare	Raid Group 0	4/7/04 2:43:40 PM	4/7/04 2:43:40 PM
Delete Spare	Raid Group 0	4/7/04 2:44:24 PM	4/7/04 2:44:24 PM
Delete RAID Group	Raid Group 0	4/7/04 2:44:30 PM	4/7/04 2:44:30 PM
Create RAID Group	Raid Group 0	4/7/04 2:46:08 PM	4/7/04 2:46:08 PM
Create RAID Group	Raid Group 1	4/7/04 2:46:35 PM	4/7/04 2:46:35 PM
Create Spare	Raid Group 0	4/7/04 2:48:09 PM	4/7/04 2:48:09 PM
Delete RAID Group	Raid Group 0	4/7/04 2:48:59 PM	4/7/04 2:48:59 PM
Delete RAID Group	Raid Group 0	4/7/04 2:48:59 PM	4/7/04 2:48:59 PM
Delete Spare	Raid Group 0	4/7/04 2:49:05 PM	4/7/04 2:49:05 PM
Create RAID Group	Raid Group 0	4/7/04 2:52:01 PM	4/7/04 2:52:01 PM
Create RAID Group	Raid Group 1	4/7/04 2:52:36 PM	4/7/04 2:52:36 PM

Task Count: 44

The Task Manager window has it's own menu bar. All options available via the menu bar are shown below

File	Options	Task
Open...	Sorting...	Modify...
Save...	Fields...	Suspend...
Print...		Resume...
Exit		Cancel...
		Delete...

Open

Not implemented yet.

Save

Not implemented yet.

Print

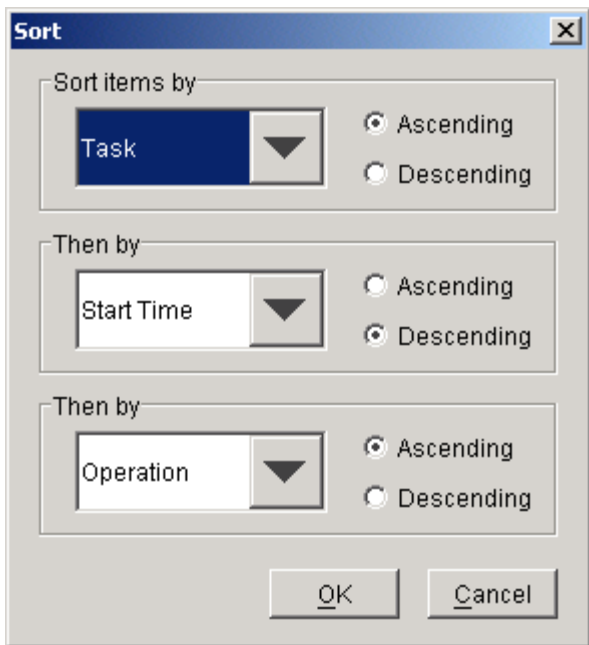
Not implemented yet.

Exit

This command closes the Task Summary window.

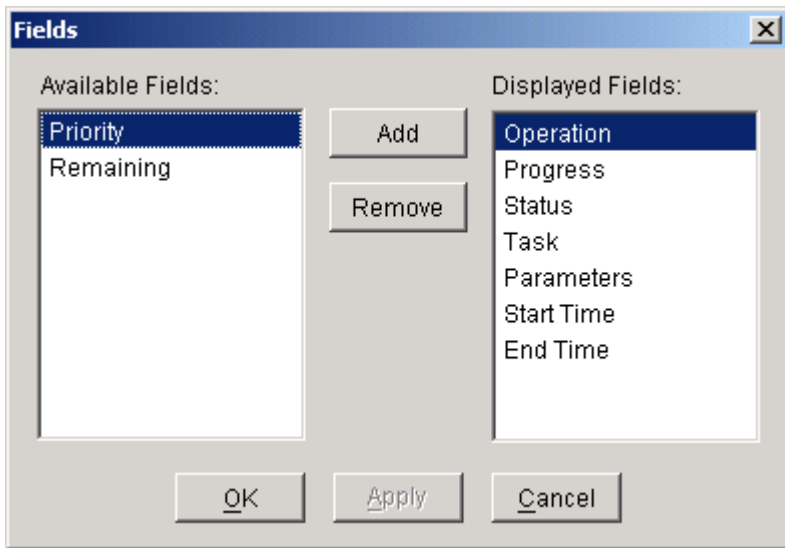
Sorting

This command displays a dialog box to let user choose up to 3 items to sort task items in the task list.



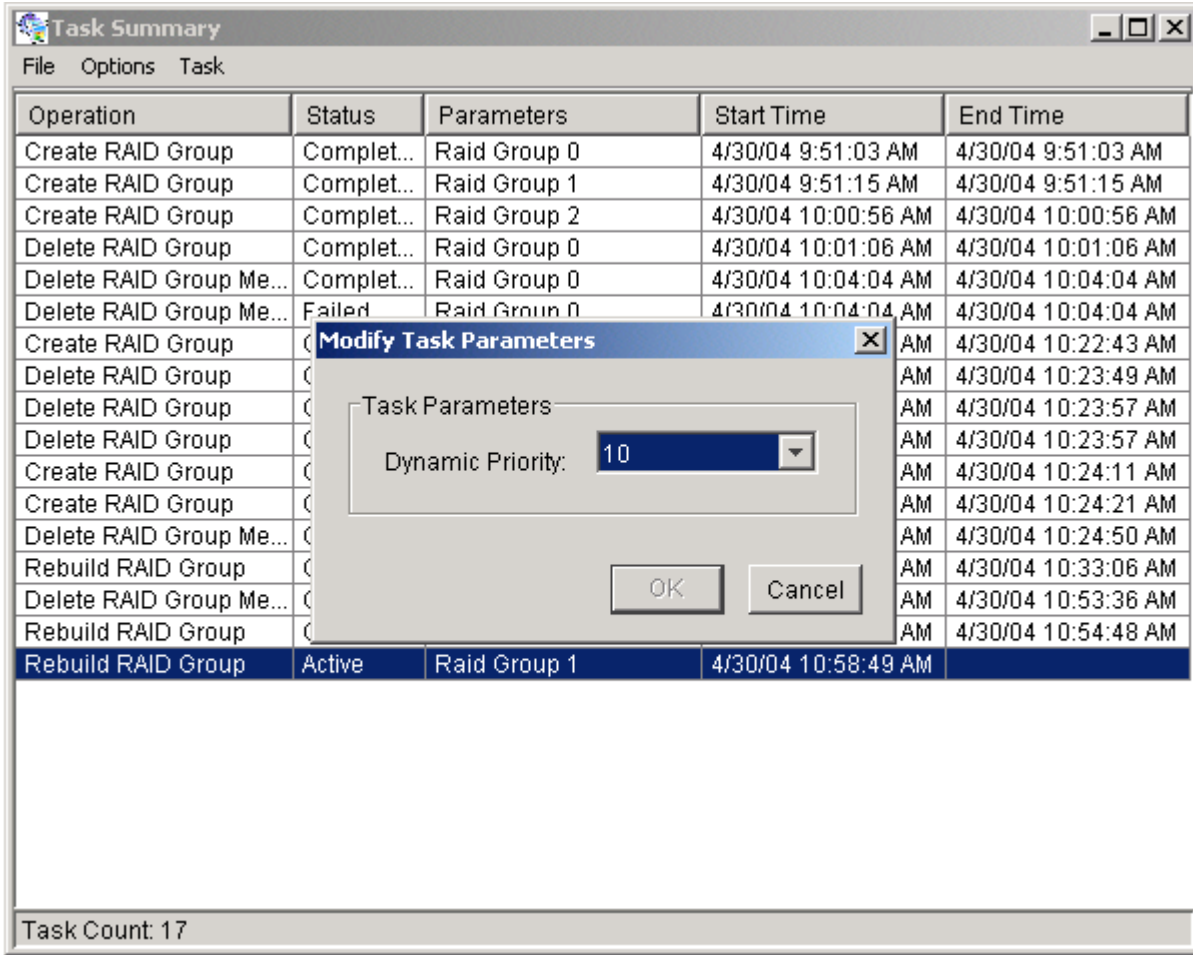
Fields

This command displays a dialog box to let user choose which fields will be shown in the task list.



Modify

This command allows user to modify parameters of the selected task items. The following is an example of changing rebuild priority for a rebuild task.



Suspend

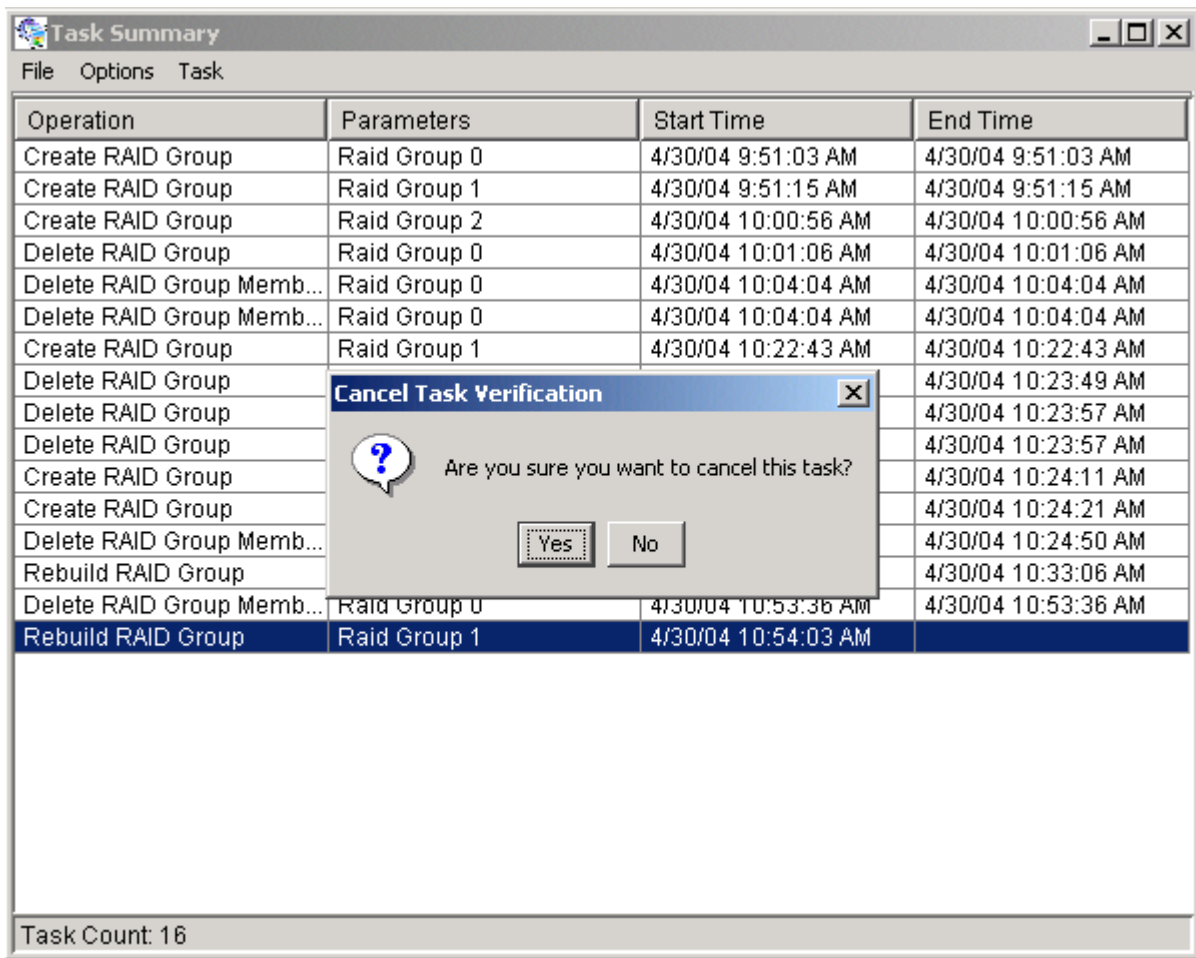
This command allows user to suspend the selected task items.

Resume

This command allows user to resume the suspended task items.

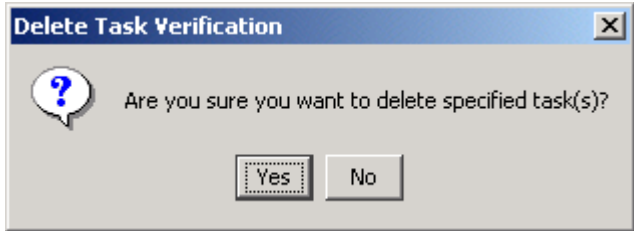
Cancel

This command allows user to cancel the selected task items.



Delete

This command displays a dialog box to let user delete the selected task items from the task list in Task Summary window. The following dialog box will pop up to get confirmation from the user.



8.2.12 Event Log

This command displays the Event Log window. The Event Log window displays SATA device-related events that occur while SATARAID5 is running.

Event	EventType	EventLevel	EventMessage
0	Application	Normal	Database initialized..
1	Controller	Normal	4/6/04 12:31:52 PM Begin gro...
2	Controller	Normal	4/6/04 12:31:52 PM Initializatio...
3	Controller	Normal	4/6/04 12:31:52 PM Initializatio...
4	Device	Normal	4/6/04 3:24:06 PM Segment cr...
5	Device	Normal	4/6/04 3:24:06 PM Segment cr...
6	RAID	Normal	4/6/04 3:24:06 PM Start Creat...
7	Raid	Normal	4/6/04 3:24:06 PM Configure ...
8	Raid	Normal	4/6/04 3:31:19 PM Delete RAI...
9	RAID	Warning	4/6/04 3:31:19 PM Globals: M...
10	Device	Normal	4/6/04 3:31:19 PM Segment d...
11	RAID	Warning	4/6/04 3:31:19 PM Globals: M...
12	Device	Normal	4/6/04 3:31:19 PM Segment d...
13	RAID	Warning	4/6/04 3:31:19 PM Globals: Gr...
14	Controller	Normal	4/7/04 9:04:26 AM Begin grou...
15	Controller	Normal	4/7/04 9:04:26 AM Initialization...
16	Controller	Normal	4/7/04 9:04:26 AM Initialization...
17	Device	Normal	4/7/04 2:25:32 PM Segment cr...
18	Device	Normal	4/7/04 2:25:32 PM Segment cr...
19	RAID	Normal	4/7/04 2:25:32 PM Start Creat...
20	Raid	Normal	4/7/04 2:25:32 PM Configure ...
21	Raid	Normal	4/7/04 2:25:33 PM Configure ...
22	XML	Warning	4/7/04 2:25:33 PM XML SYNTA...
23	Device	Normal	4/7/04 2:26:38 PM Segment cr...

Event Count: 114

The Event Log window has it's own menu bar. All options available via the menu bar are shown below

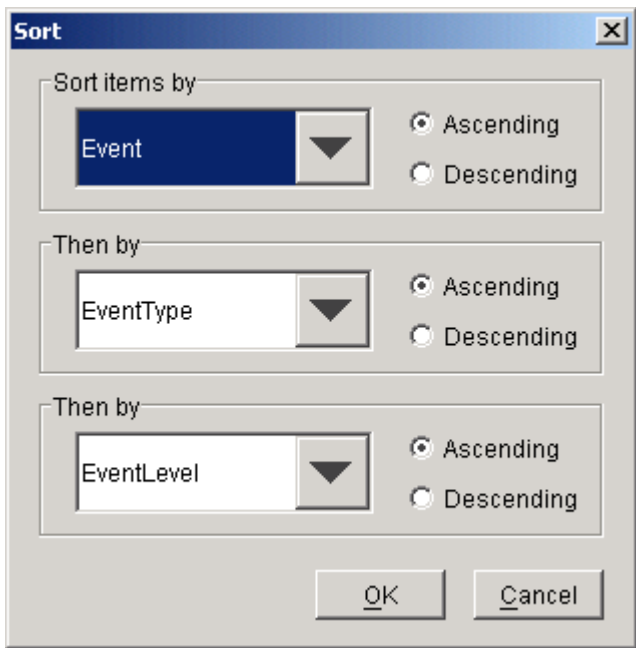
- File**
- Options**
- Exit
- Sorting...
- Fields...

Exit

This command closes the Event Log window.

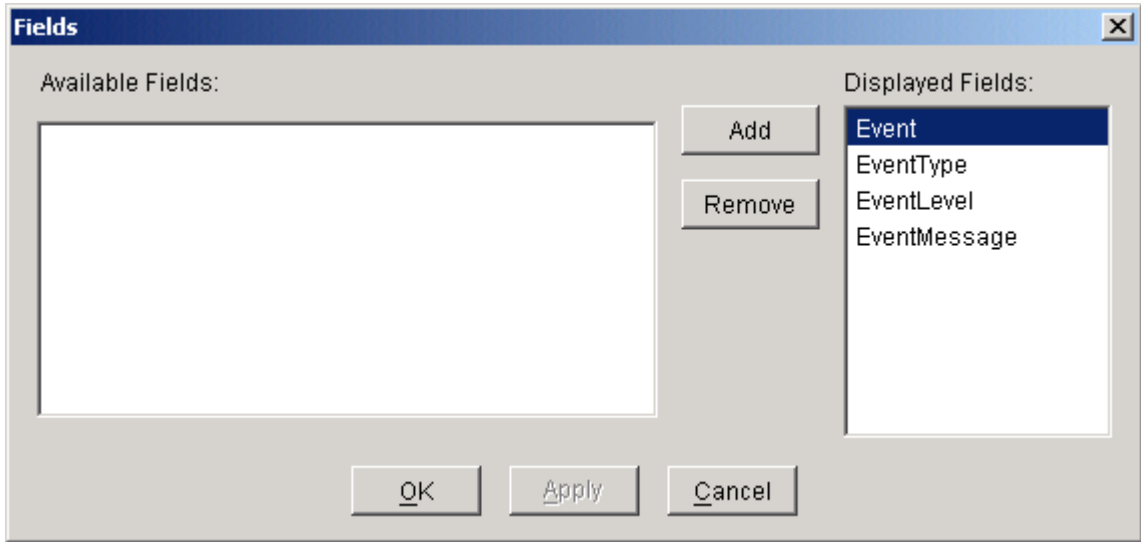
Sorting

This command displays a dialog box to let user choose up to 3 items to sort event items in the event log.



Fields

This command displays a dialog box to let user choose which fields will be shown in the event log.



8.2.13 I/O Statistics

Not implemented yet.

8.2.14 Resources

?????

Resource	Current	Maximum
DSRB	-26	32
QSRB	9	40
TDB	0	64
DSD	8	160
DBD	1	32

Active

8.2.15 Create Legacy RAID Group

This command displays a dialog box to let user create legacy RAID group. This item is disabled if new RAID groups exist.

User needs to select the following parameters:

RAID Group: Select a group ID from the available ID list

Configuration: Striped (for RAID 0)
 Mirrored (for RAID 1)
 Mirrored Striped (for RAID 10)
 Parity RAID (for RAID 5)

Capacity: Select from a list of RAID group size, current options are from 256 MB to 100 GB, and MAX.

Chunk Size: Select one from the available list: 8, 16, 32, 64, 128 (KB). RAID 1 set does not require this.

Devices: Select RAID member devices from the available device segment list

Create Legacy RAID Group

Parameters

RAID Group: 0

Configuration: Striped

Capacity: 2 GB

Chunk Size: 16 KB

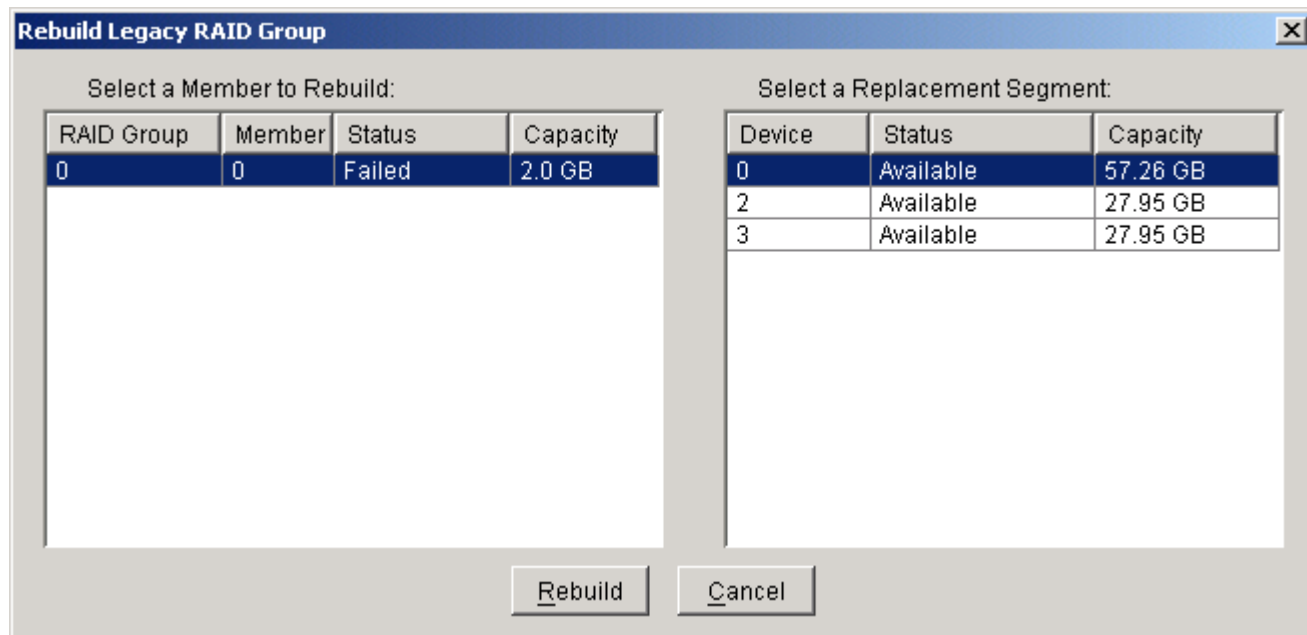
Rebuild Priority: 10

Device	Capacity	Starting LBN
0	57.26 GB	00000000
1	76.33 GB	00000000
2	27.95 GB	00000000
3	27.95 GB	00000000

Create Close

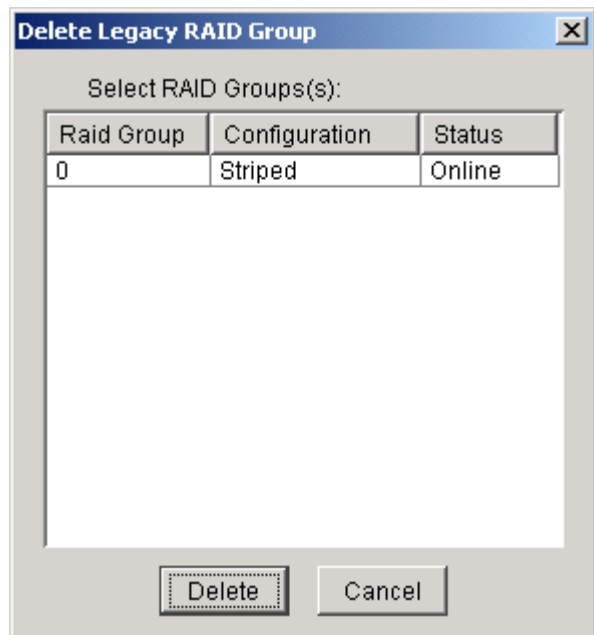
8.2.16 Rebuild Legacy RAID Group

This command displays a dialog box to let user choose a replacement segment to rebuild a non-fault tolerant legacy RAID group.



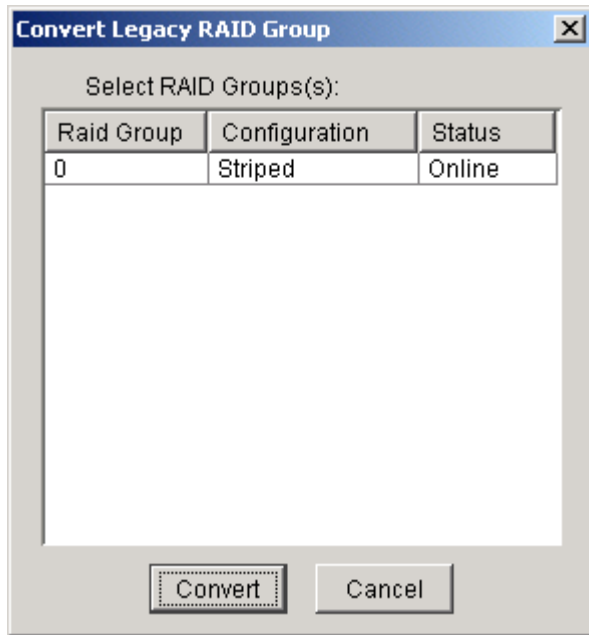
8.2.17 Delete Legacy RAID Group

This command displays a dialog box to let user choose legacy RAID groups to delete. This item is disabled if no legacy RAID groups exist.



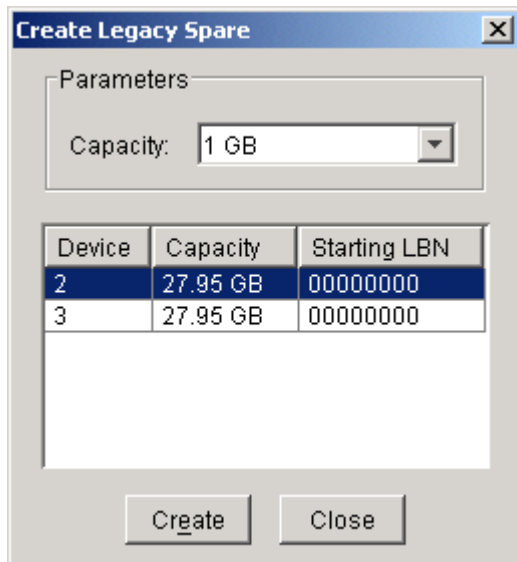
8.2.18 Convert Legacy RAID Group

This command displays a dialog box to let user choose legacy RAID groups to convert to new RAID groups of the same RAID type (configuration). This item is disabled if no legacy RAID groups exist.



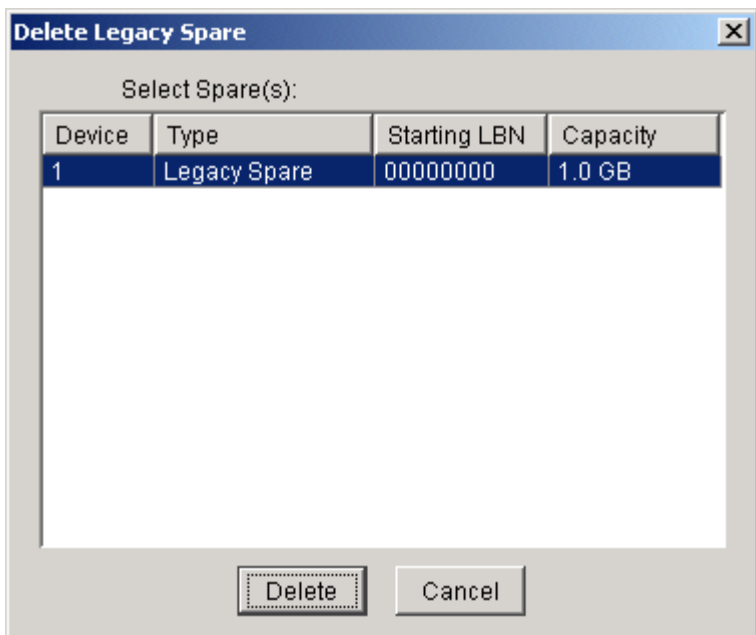
8.2.19 Create Legacy Spare

This command displays a dialog box to let user create legacy spare drive. This item is disabled if new RAID groups exist.



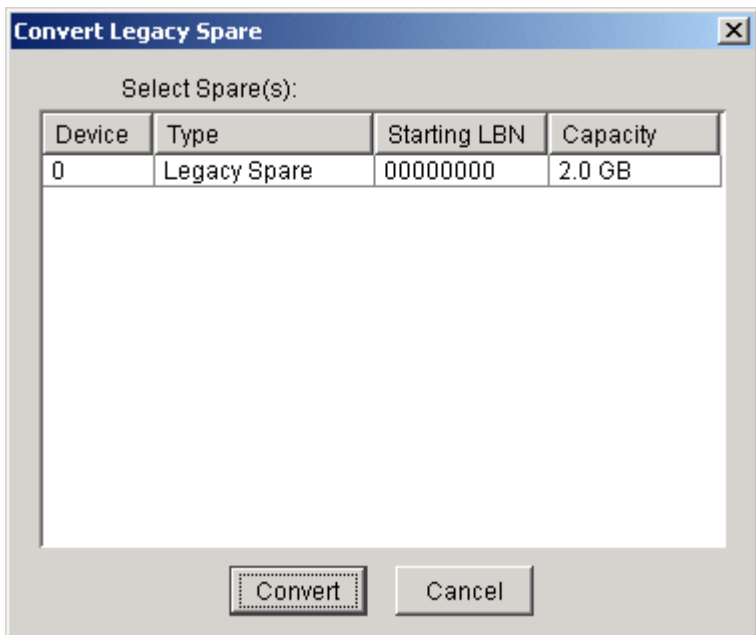
8.2.20 Delete Legacy Spare

This command displays a dialog box to let user delete legacy spare drive. This item is disabled if no legacy spare drive exists.



8.2.21 Convert Legacy Spare

This command displays a dialog box to let user choose legacy spare drives to convert to new spare drives. This item is disabled if no legacy spare drives exist.



8.2.22 Help Topics

This command opens an interactive help dialog using the standard Windows help interface.

Not implemented yet.

8.2.23 About

This command displays a dialog box with more information about the SATARAID5 program, including the revision level.

