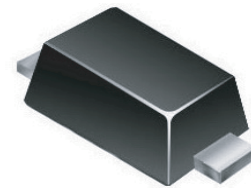


SCHOTTKY BARRIER DIODE

FEATURES

- ◇ Low Forward Voltage Drop
- ◇ Flat Lead SOD-523 Small Outline Plastic Package
- ◇ Extremely Small SOD-523 Package
- ◇ Surface Device Type Mounting
- ◇ ROHS Compliant
- ◇ Green EMC
- ◇ Matte Tin(Sn) Lead Finish
- ◇ Band Indicates Cathode
- ◇ Marking: B

PACKAGE OUTLINE



MAXIMUM RATINGS AND ELECTRICAL CHARACTERISTICS

Ratings at 25 °C ambient temperature unless otherwise specified.
resistive or inductive load.

MAXIMUM RATINGS (@T =25°C unless otherwise noted)

Symbol	Parameter	Value	Units
P _D	Power Dissipation	200	mW
T _{STG}	Storage Temperature Range	-55to+125	°C
T _J	Operating Junction Temperature	+125	°C
V _R	Reverse Voltage	30	V
I _{F(AV)}	Average Forward Current	200	mA
I _{FSM}	Peak Forward Surge Current (At 8.3ms single half sine-wave)	1	A
I ² t	Typical Current Squarad Time	0.004	A ² /Sec

These ratings are limiting values above which the serviceability of the diode may be impaired.

ELECTRICAL CHARACTERISTICS (@T =25°C unless otherwise noted)

Parameter	Symbol	Min.	Typ.	Max.	Unit
Breakdown Voltage at I _R =500uA	B _V	30			Volts
Reverse Leakage Current at V _R =10V	I _R			1	uA
Forward Voltage at I _F =200mA	V _F			0.6	Volts

RATING AND CHARACTERISTICS CURVES (RB520S-30)

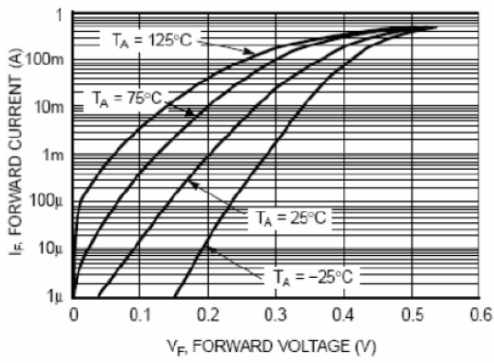


Figure 1. Forward Characteristics

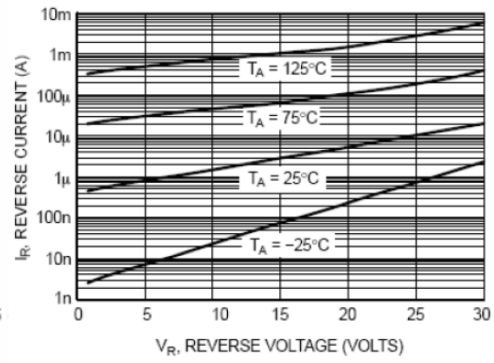
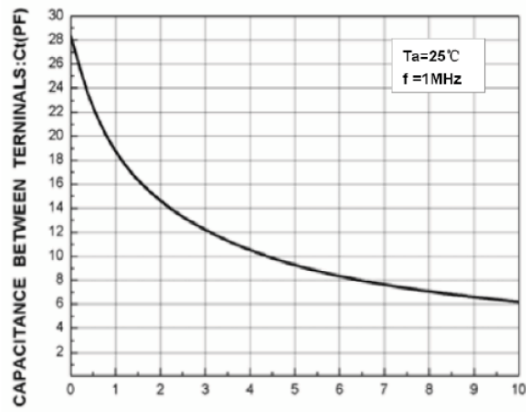


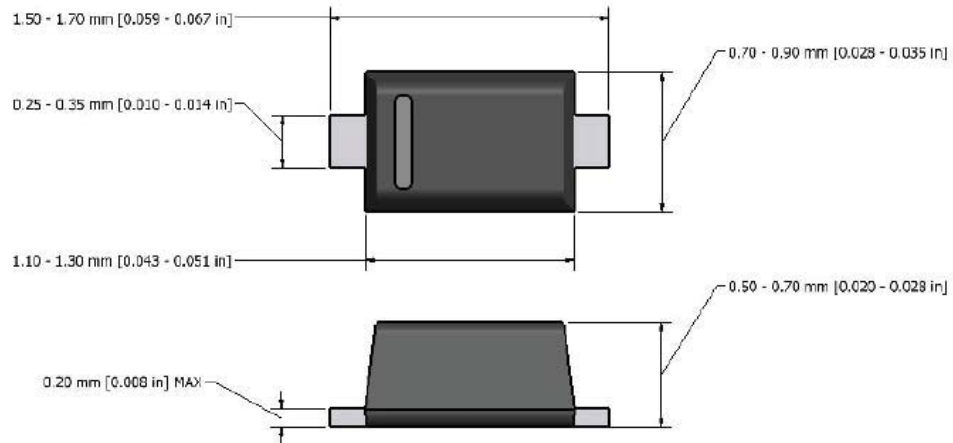
Figure 2. Reverse Characteristics



REVERSE VOLTAGE : V_R (V)

Figure3.Total Capacitance

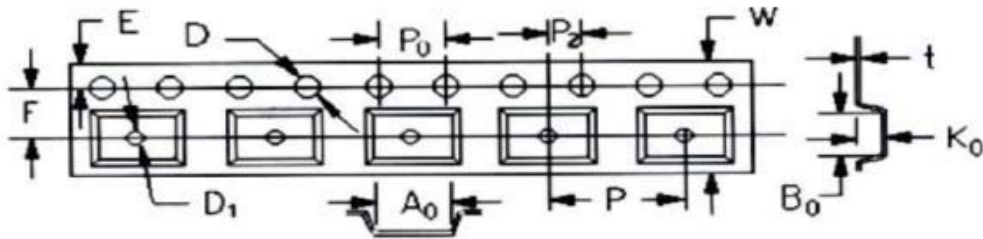
SOD-523 PACKAGE OUTLINE DIMENSIONS



Note: Dimensions are exclusive of Burrs, Mold Flash & Tie Bar extrusions.

Packing Specification

Carrier Tape

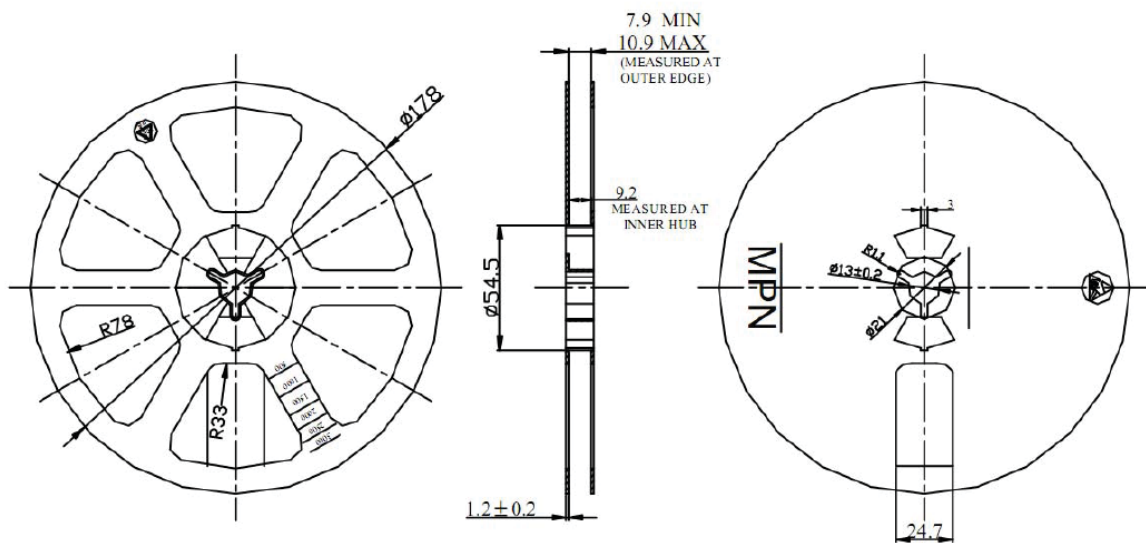


Unit: mm

PKG Type	Tape Size	Dim.	W	P	E	F	D	D1	P0	10P0	P2	A0	B0	K0	t
SOD523	8mm	Min.	7.90	1.95	1.65	3.45	1.50	0.45	3.90	39.80	1.95	0.85	1.90	0.68	0.16
		Max.	8.30	2.05	1.85	3.55	1.60	0.55	4.10	40.20	2.05	0.95	2.00	0.78	0.20

Reel

Unit: mm



Packing Quantity

Reel		Inner Box		Carton	
Size	Quantity Per Reel	Size	Quantity Per Reel	Size	Quantity Per Reel
7 (inch)	3,000pcs	183*188*80 (mm)	18,000pcs	386*265*215 (mm)	108,000pcs

DISCLAIMER NOTICE

Rectron Inc reserves the right to make changes without notice to any product specification herein, to make corrections, modifications, enhancements or other changes. Rectron Inc or anyone on its behalf assumes no responsibility or liability for any errors or inaccuracies. Data sheet specifications and its information contained are intended to provide a product description only. "Typical" parameters which may be included on RECTRON data sheets and/ or specifications can and do vary in different applications and actual performance may vary over time. Rectron Inc does not assume any liability arising out of the application or use of any product or circuit.

Rectron products are not designed, intended or authorized for use in medical, life-saving implant or other applications intended for life-sustaining or other related applications where a failure or malfunction of component or circuitry may directly or indirectly cause injury or threaten a life without expressed written approval of Rectron Inc. Customers using or selling Rectron components for use in such applications do so at their own risk and shall agree to fully indemnify Rectron Inc and its subsidiaries harmless against all claims, damages and expenditures.