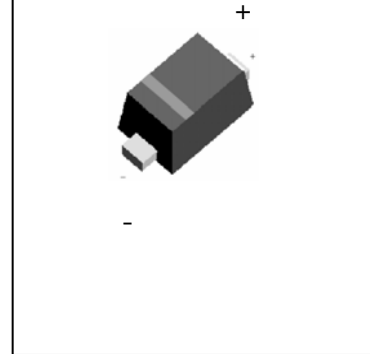




Schottky barrier Diodes

SOD-523**FEATURES**

- * Small surface mounting type
- * Low reverse current and low forward voltage
- * High reliability

MARKING: C OR 5M**Maximum Ratings and Electrical Characteristics, Single Diode @T_A=25 °C**

Parameter	Symbol	Limits	Unit
DC reverse voltage	V _R	30	V
Mean rectifying current	I _O	200	mA
Peak forward surge current	I _{FSM}	1	A
Junction temperature	T _j	125	°C
Storage temperature	T _{stg}	-40-125	°C

Electrical Ratings @T_A=25 °C

Parameter	Symbol	Min.	Typ.	Max.	Unit	Conditions
Forward voltage	V _F			0.5	V	I _F =200mA
Reverse current	I _R			30	μA	V _R =10V



Typical Characteristics

Fig.1 Forward Characteristics

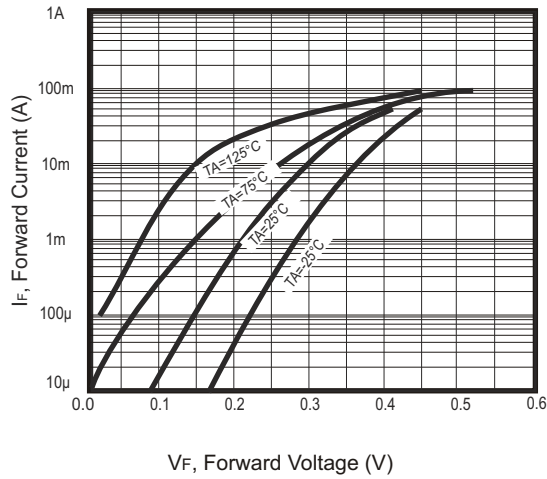


Fig. 2 - Reverse characteristics

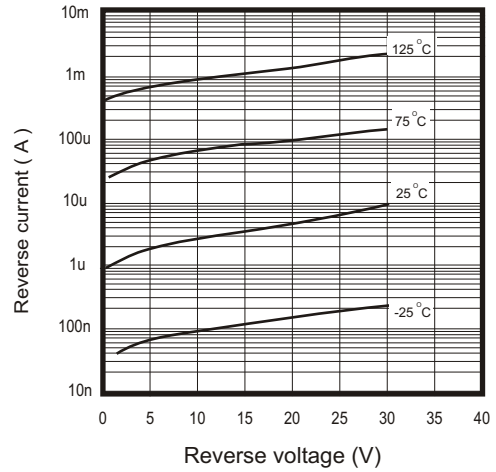
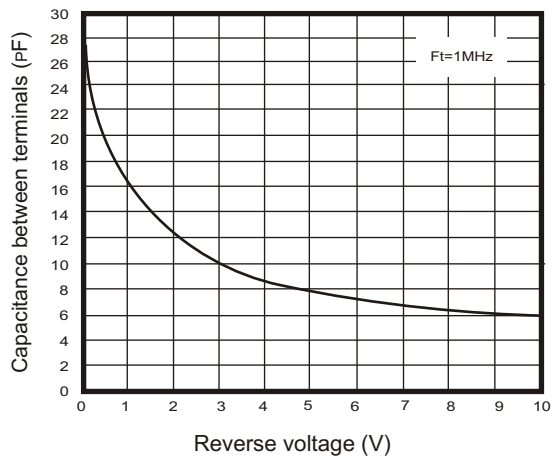
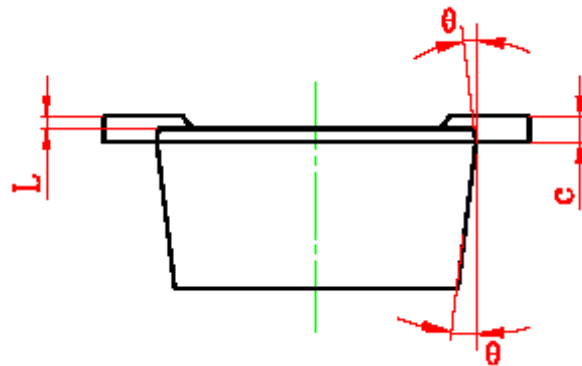
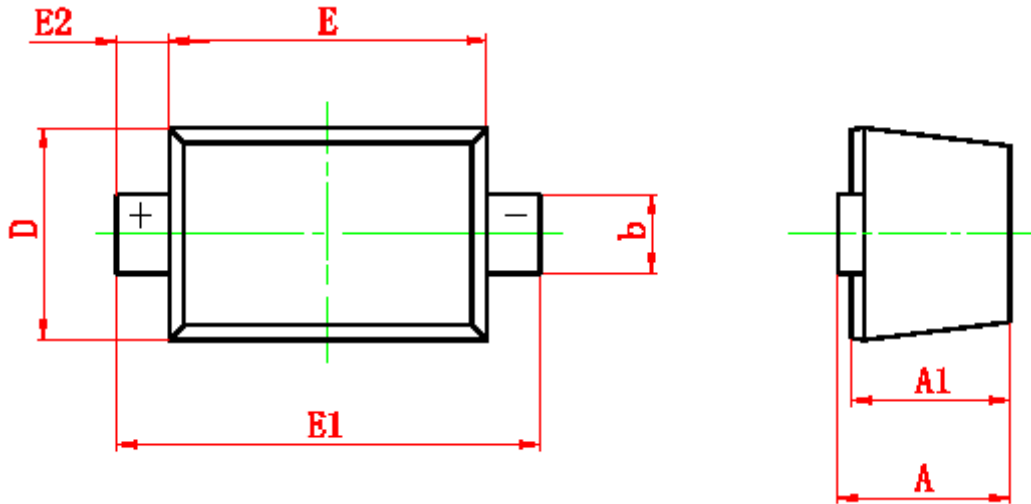


Fig. 3 - Capacitance between terminals characteristics





SOD-523 PACKAGE OUTLINE



Symbol	Dimensions in Millimeter		Dimensions in Inches	
	Min	Max	Min	Max
A	0.51	0.77	0.020	0.031
A1	0.50	0.70	0.020	0.028
b	0.25	0.35	0.010	0.014
c	0.08	0.15	0.003	0.006
D	0.75	0.85	0.030	0.033
E	1.10	1.30	0.043	0.051
E1	1.50	1.70	0.059	0.067
E2	0.20 REF		0.008 REF	
L	0.01	0.07	0.001	0.003
θ	7° REF		7° REF	