



DATA SHEET

SEMICONDUCTOR

RB751S-40

200mW SOD-523 SURFACE MOUNT Very Small Outline Flat Lead Plastic Package Schottky Barrier Diode



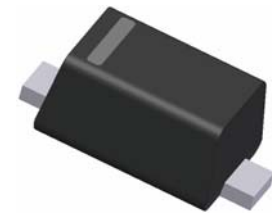
DEVICE MARKING CODES:

Device Type	Device Marking
RB751S-40	4B

Absolute Maximum Ratings T_A = 25°C unless otherwise noted

Symbol	Parameter	Value	Units
P _D	Power Dissipation	200	mW
T _{STG}	Storage Temperature Range	-55 to +125	°C
T _J	Operating Junction Temperature	+125	°C
V _{RM}	Peak Reverse Voltage	40	V
V _R	Reverse Voltage	30	V
I _F	Forward Current	30	mA
I _{FSM}	Non-Repetitive Peak Forward Current	500	mA

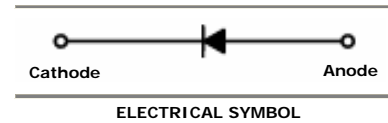
These ratings are limiting values above which the serviceability of the diode may be impaired.



SOD-523 Flat Lead

Specification Features:

- Low Forward Voltage Drop
- Flat Lead SOD-523 Small Outline Plastic Package
- Extremely Small SOD-523 Package
- Surface Device Type Mounting
- RoHS Compliant
- Matte Tin(Sn) Lead Finish
- Band Indicates Cathode



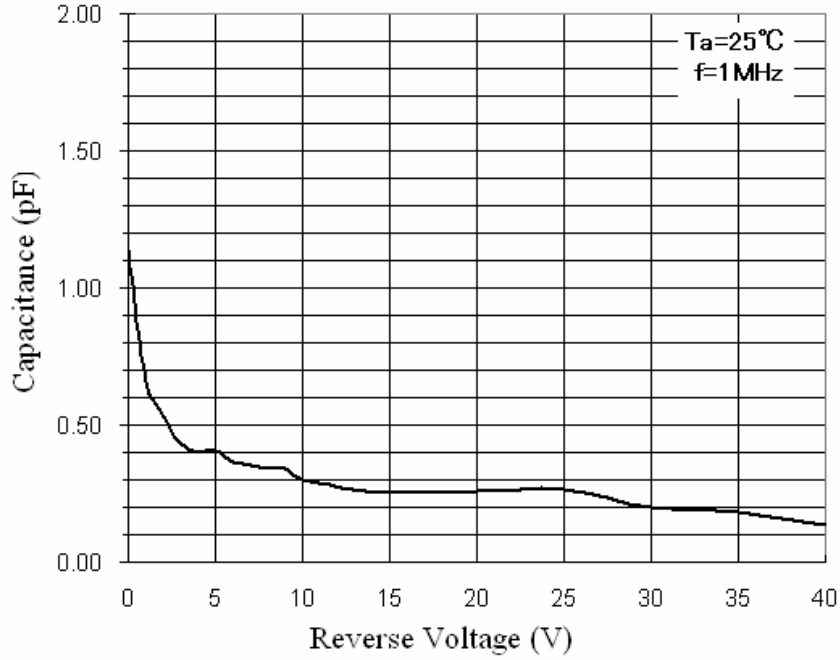
Electrical Characteristics T_A = 25°C unless otherwise noted

Symbol	Parameter	Test Condition	Limits		Unit
			Min	Max	
B _V	Breakdown Voltage	I _R =10μA	30		Volts
I _R	Reverse Leakage Current	V _R =30V		0.5	μA
V _F	Forward Voltage	I _F =1mA		0.37	Volts

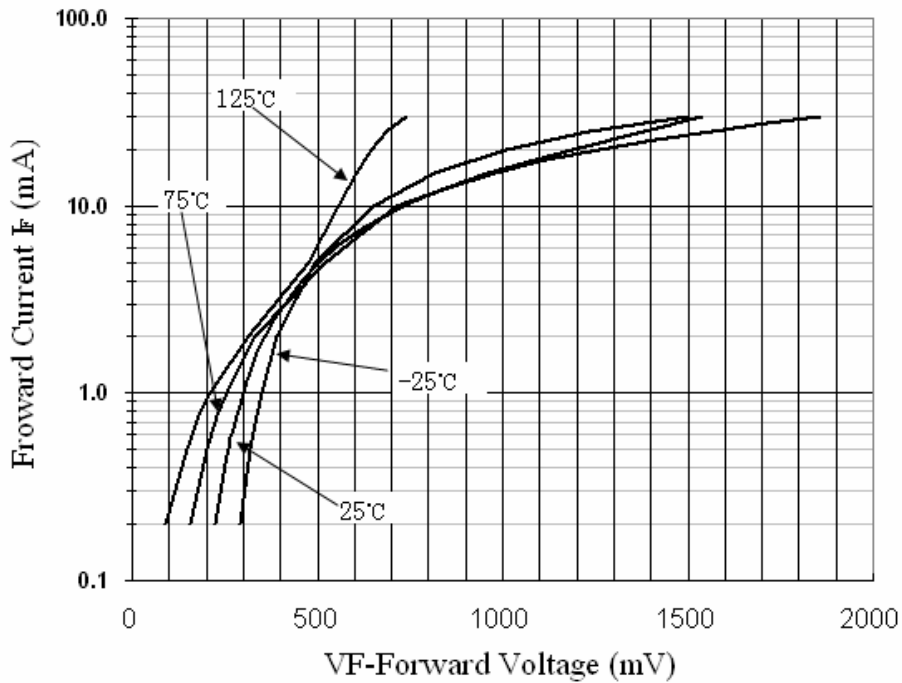
DEVICE CHARACTERISTICS

RB751S-40

Total Capacitance



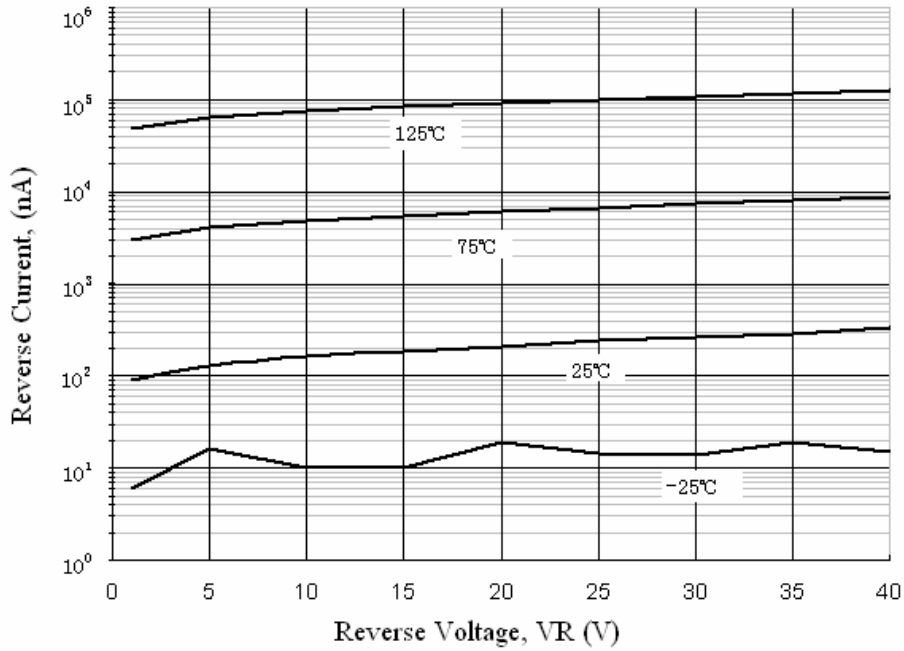
Forward Voltage vs Ambient Temperature



PACKAGE OUTLINE & DIMENSIONS

RB751S-40

Reverse Current vs Reverse Voltage



Flat Lead SOD-523 Package Outline

