

# RB751V-40

## SILICON EPITAXIAL PLANAR SCHOTTKY BARRIER DIODE

### Features

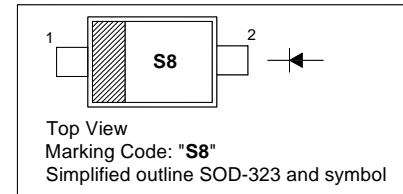
- Small surface mounting type
- Low reverse current and low forward voltage
- High reliability

### Applications

- High speed switching

### PINNING

PIN	DESCRIPTION
1	Cathode
2	Anode



### Absolute Maximum Ratings ( $T_a = 25^\circ\text{C}$ )

Parameter	Symbol	Value	Unit
Peak Reverse Voltage	$V_{RM}$	40	V
Reverse Voltage	$V_R$	30	V
Mean Rectifying Current	$I_O$	30	mA
Peak Forward Surge Current (60 Hz for 1 Cyc.)	$I_{FSM}$	200	mA
Junction Temperature	$T_j$	125	$^\circ\text{C}$
Storage Temperature Range	$T_s$	- 40 to + 125	$^\circ\text{C}$

### Characteristics at $T_a = 25^\circ\text{C}$

Parameter	Symbol	Typ.	Max.	Unit
Forward Voltage at $I_F = 1\text{ mA}$	$V_F$	-	0.37	V
Reverse Current at $V_R = 30\text{ V}$	$I_R$	-	0.5	$\mu\text{A}$
Capacitance Between Terminals at $V_R = 1\text{ V}$ , $f = 1\text{ MHz}$	$C_T$	2	-	pF

Note: ESD sensitive product handling required.

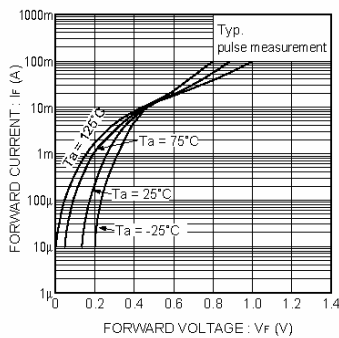


Fig. 1 Forward characteristics

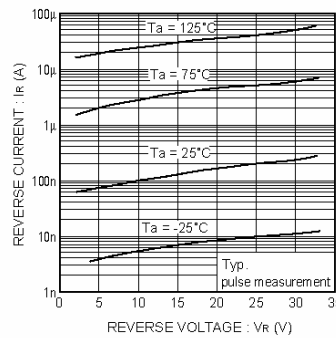


Fig. 2 Reverse characteristics

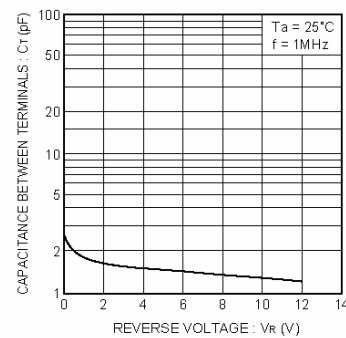
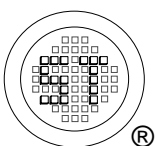


Fig. 3 Capacitance between terminals characteristics



**SEMTECH ELECTRONICS LTD.**

(Subsidiary of Sino-Tech International Holdings Limited, a company listed on the Hong Kong Stock Exchange, Stock Code: 724)



ISO/TS 16949 : 2002 Certificate No. 05103  
ISO 14001:2004 Certificate No. 7116  
ISO 9001:2000 Certificate No. 0506098

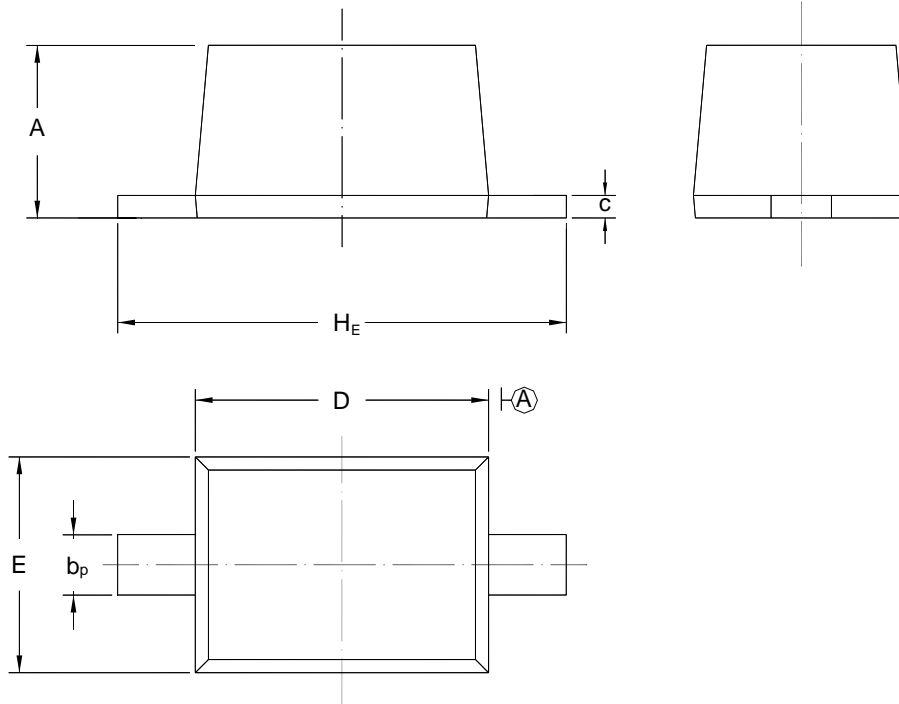
Dated : 01/09/2006

# RB751V-40

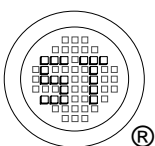
## PACKAGE OUTLINE

Plastic surface mounted package; 2 leads

SOD-323



UNIT	A	$b_p$	C	D	E	$H_E$
mm	1.10 0.80	0.40 0.25	0.15 0.00	1.80 1.60	1.35 1.15	2.80 2.30



**SEMTECH ELECTRONICS LTD.**  
 (Subsidiary of Sino-Tech International Holdings Limited, a company  
 listed on the Hong Kong Stock Exchange, Stock Code: 724)



Dated : 01/09/2006