



DATA SHEET

SEMICONDUCTOR

RB751V-40

200mW SOD-323 SURFACE MOUNT Very Small Outline Flat Lead Plastic Package Schottky Barrier Diode



Absolute Maximum Ratings $T_A = 25^\circ\text{C}$ unless otherwise noted

Symbol	Parameter	Value	Units
P_D	Power Dissipation	200	mW
T_{STG}	Storage Temperature Range	-55 to +125	$^\circ\text{C}$
T_J	Operating Junction Temperature	+125	$^\circ\text{C}$
V_{RRM}	Repetitive Peak Reverse Voltage	40	V
V_R	Reverse Voltage	30	V
I_F	Forward Current	30	mA
I_{FSM}	Non-Repetitive Peak Forward Current	500	mA

These ratings are limiting values above which the serviceability of the diode may be impaired.

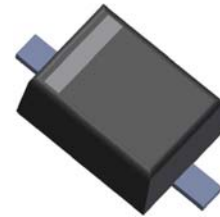
Specification Features:

- Low Forward Voltage Drop
- Flat Lead SOD-323 Small Outline Plastic Package
- Surface Device Type Mounting
- Matte Tin(Sn) Lead Finish
- Pb free product at available : 99% Sn above meet RoHS environment
- Band Indicates Cathode
- ESD Rating:
Human Body Model, Class 2.
Machine Model, Class C.

Electrical Characteristics $T_A = 25^\circ\text{C}$ unless otherwise noted

Symbol	Parameter	Test Condition	Limits		Unit
			Min	Max	
B_V	Breakdown Voltage	$I_R=10\mu\text{A}$	30		Volts
I_R	Reverse Leakage Current	$V_R=30\text{V}$		0.5	μA
V_F	Forward Voltage	$I_F=1\text{mA}$		0.37	Volts

SOD-323 Flat Lead



DEVICE MARKING CODES:

Device Type	Device Marking
RB751V-40	B5

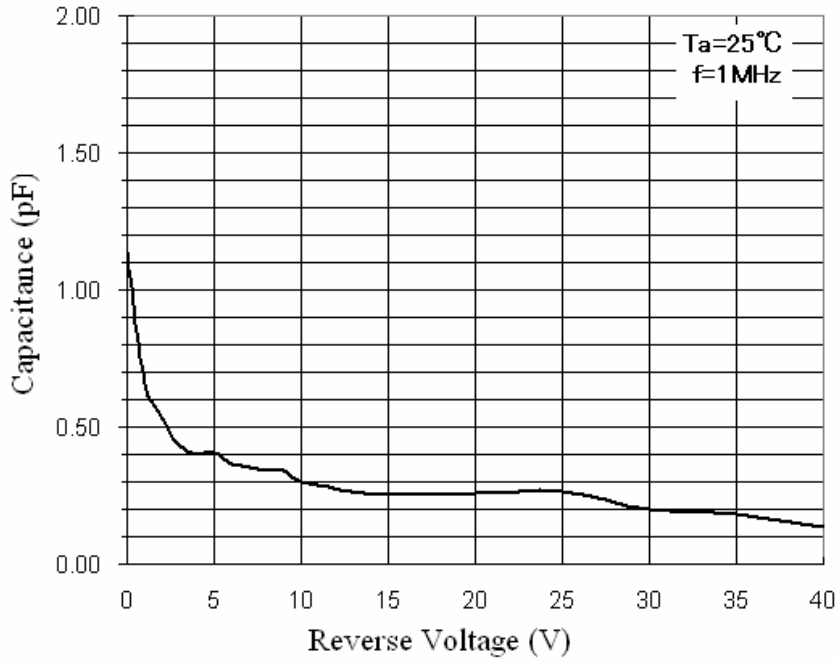


ELECTRICAL SYMBOL

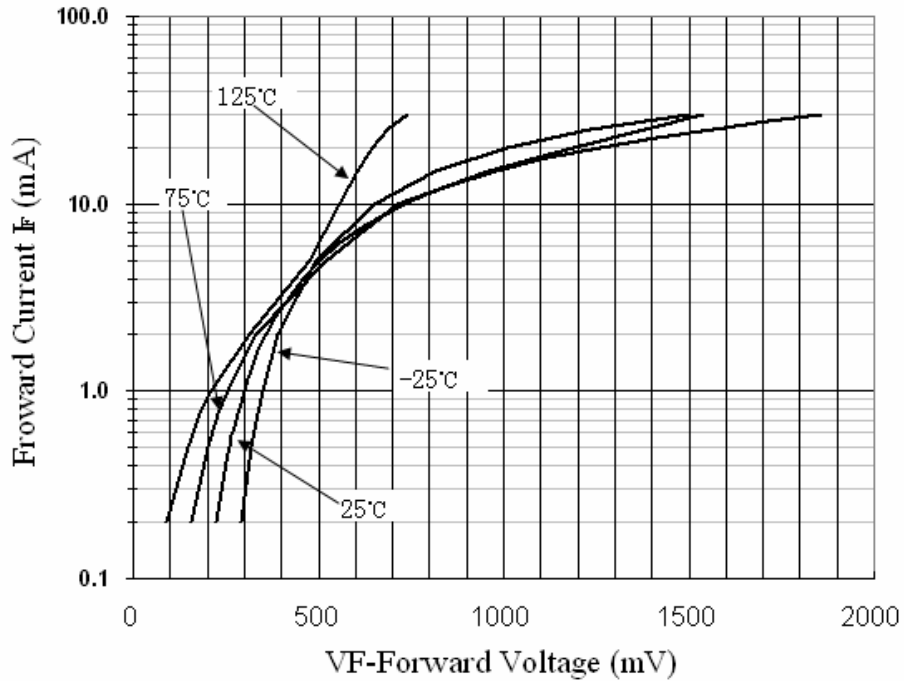
DEVICE CHARACTERISTICS

RB751V-40

Total Capacitance



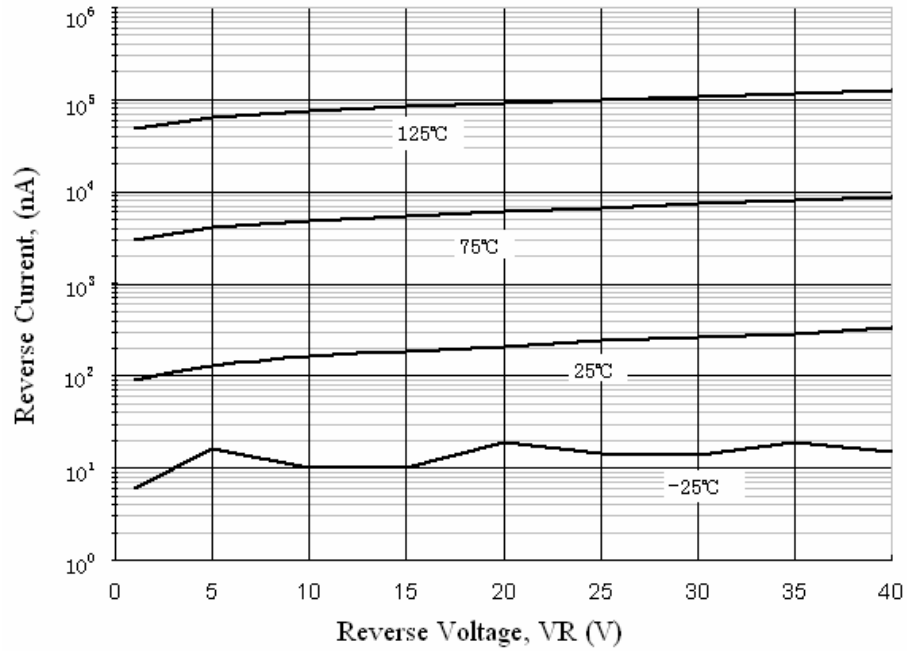
Forward Voltage vs Ambient Temperature



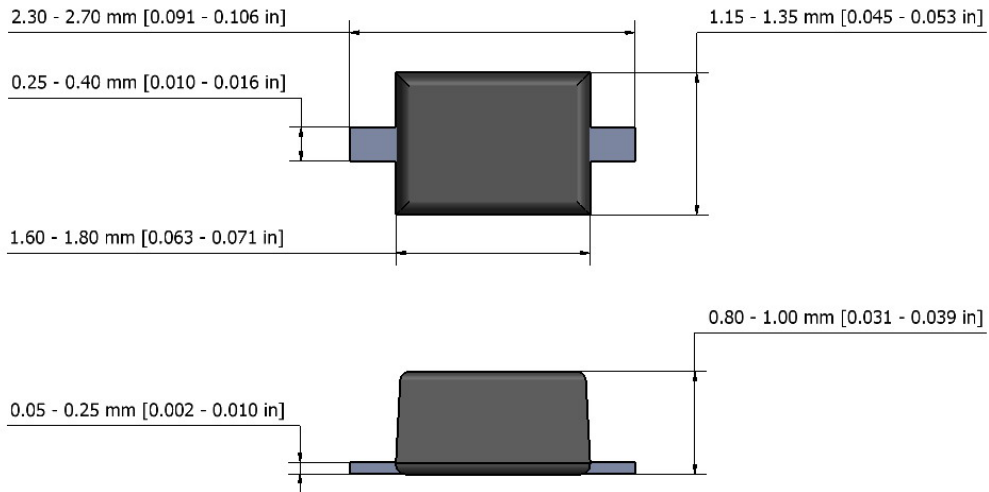
PACKAGE OUTLINE & DIMENSIONS

RB751V-40

Reverse Current vs Reverse Voltage



SOD-323 Package Outline



SOLDERING FOOTPRINT*

