

RC5000Y Series

Inquiry

Ling core:High permeability



Application

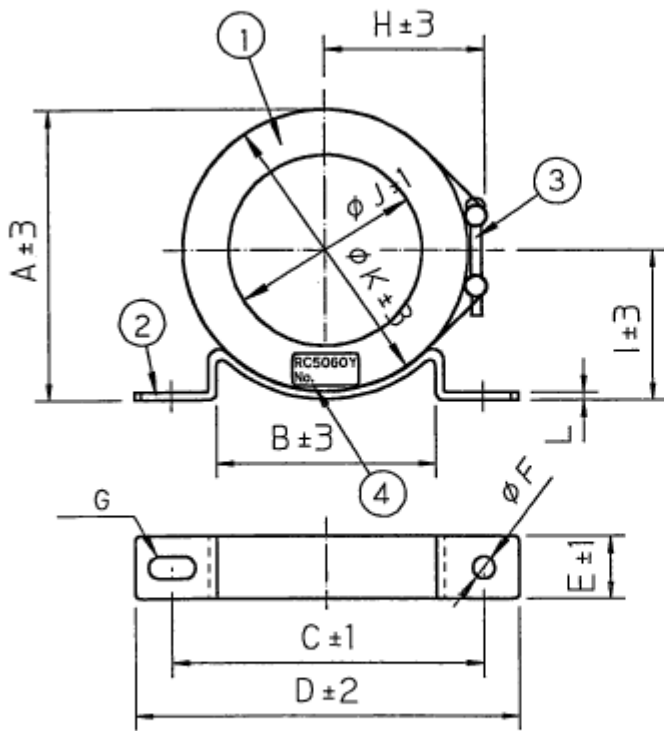
Signal line/swiching power supply/inverter etc.

Specifications

Measurement temperature 23+/-2Deg.C													
Type	1KHz(uH)	Dimension(mm)											
		A	B	C	D	E	F	G	H	I	J	K	L
RC5045Y	39-73	54	32	75	90	16	dia.5	R2.5 L10	32	30	31	49	1.6
RC5060Y	42-78	70	45	95	115	19	dia.5	R2.5 L10	40	38	41	64	1.6
RC5075Y	45-85	85	63	130	150	23	dia.7	R3.5 L15	48	46	51	79	3
RC5100Y	33-61	114	85	140	160	25	dia.7	R3.5 L15	62	62	76	104	3

Note:Measured by YHP manufactured multi-frequency LCR meter 4284A or equivalent.
Condition for the measurement f=1KHz, 1T 10mA through.

Fig



NO	名称
1	アモルファス系コア
2	コアバンド
3	ネジ
4	銘板

<銘板仕様> (表示例 RC3060Y)

TYPE RC5060Y	品名
No. _____	ロットNo.