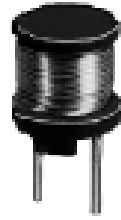
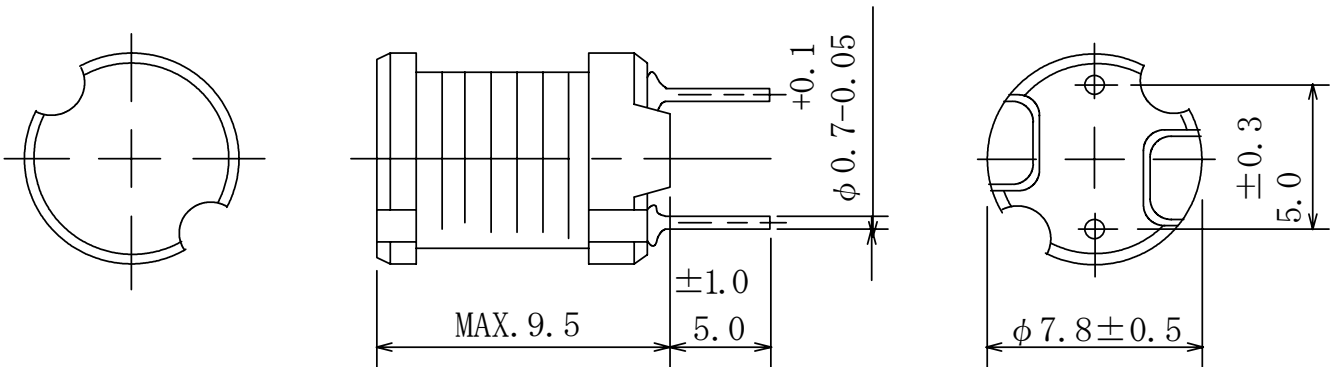


**Type: RCH-895**
**◆ Product Description**

- 8.3mm Max.  $\phi$ , 9.5mm Max. Height.
- Inductance Range:  $2.5 \mu\text{H} \sim 47\text{mH}$
- Rated current range:  $31\text{mA} \sim 3.2\text{A}$
- In addition to the standard versions of inductors shown here, custom inductors are available to meet your exact requirements.


**◆ Feature**

- Magnetically unshielded construction.
- Ideally Used in Printers, LCD TV, DVD, Printer, Copy Machine, Mainboard of the compounding machines, etc as Power Supplies's Inductors or DC-DC Converter inductors.
- RoHS Compliance

**◆ Dimensions (mm)**


**Type: RCH-895**
**◆ Specification**

Part Name	Stamp	Inductance <Within> ※ 1	D.C.R <Max.>(Ω) (at20°C)	Saturation Current(A) ※2	Temperature rise current (A)※3
RCH895NP-2R5M	2R5M	2.5 μ H ± 20%	13.7m	5.0	3.2
RCH895NP-3R2M	3R2M	3.2 μ H ± 20%	15.3m	4.5	2.9
RCH895NP-3R8M	3R8M	3.8 μ H ± 20%	16.4m	4.1	2.7
RCH895NP-4R6M	4R6M	4.6 μ H ± 20%	18.5m	3.7	2.5
RCH895NP-5R5M	5R5M	5.5 μ H ± 20%	20.2m	3.4	2.4
RCH895NP-6R5M	6R5M	6.5 μ H ± 20%	20.8m	3.2	2.3
RCH895NP-7R7M	7R7M	7.7 μ H ± 20%	22.4m	2.9	2.2
RCH895NP-9R2M	9R2M	9.2 μ H ± 20%	24.1m	2.7	2.1
RCH895NP-100M	100M	10 μ H ± 20%	0.04	2.6	2.0
RCH895NP-120M	120M	12 μ H ± 20%	0.04	2.6	1.9
RCH895NP-150K	150K	15 μ H ± 10%	0.05	2.1	1.8
RCH895NP-180K	180K	18 μ H ± 10%	0.05	2.0	1.6
RCH895NP-220K	220K	22 μ H ± 10%	0.06	1.7	1.4
RCH895NP-270K	270K	27 μ H ± 10%	0.06	1.6	1.3
RCH895NP-330K	330K	33 μ H ± 10%	0.07	1.4	1.1
RCH895NP-390K	390K	39 μ H ± 10%	0.08	1.4	1.1
RCH895NP-470K	470K	47 μ H ± 10%	0.10	1.3	0.99
RCH895NP-560K	560K	56 μ H ± 10%	0.11	1.2	0.90
RCH895NP-680K	680K	68 μ H ± 10%	0.14	1.1	0.81
RCH895NP-820K	820K	82 μ H ± 10%	0.16	1.0	0.76
RCH895NP-101K	101K	100 μ H ± 10%	0.19	0.90	0.72
RCH895NP-121K	121K	120 μ H ± 10%	0.22	0.82	0.67
RCH895NP-151K	151K	150 μ H ± 10%	0.27	0.74	0.61
RCH895NP-181K	181K	180 μ H ± 10%	0.31	0.71	0.54
RCH895NP-221K	221K	220 μ H ± 10%	0.38	0.64	0.50
RCH895NP-271K	271K	270 μ H ± 10%	0.53	0.57	0.41
RCH895NP-331K	331K	330 μ H ± 10%	0.61	0.51	0.39
RCH895NP-391K	391K	390 μ H ± 10%	0.69	0.48	0.37
RCH895NP-471K	471K	470 μ H ± 10%	0.89	0.43	0.32
RCH895NP-561K	561K	560 μ H ± 10%	1.01	0.40	0.30
RCH895NP-681K	681K	680 μ H ± 10%	1.18	0.35	0.27
RCH895NP-821K	821K	820 μ H ± 10%	1.57	0.32	0.24
RCH895NP-102K	102K	1.0mH ± 10%	1.84	0.30	0.22
RCH895NP-122K	122K	1.2mH ± 10%	2.10	0.27	0.21
RCH895NP-152K	152K	1.5mH ± 10%	2.80	0.23	0.18
RCH895NP-182K	182K	1.8mH ± 10%	3.21	0.21	0.17
RCH895NP-222K	222K	2.2mH ± 10%	4.21	0.19	0.15
RCH895NP-272K	272K	2.7mH ± 10%	4.94	0.17	0.14
RCH895NP-332K	332K	3.3mH ± 10%	6.16	0.15	0.12
RCH895NP-392K	392K	3.9mH ± 10%	6.84	0.14	0.11
RCH895NP-472K	472K	4.7mH ± 10%	7.89	0.13	0.10
RCH895NP-562K	562K	5.6mH ± 10%	11.5	0.12	86m
RCH895NP-682K	682K	6.8mH ± 10%	13.2	0.11	80m
RCH895NP-822K	822K	8.2mH ± 10%	15.3	0.10	75m
RCH895NP-103K	103K	10mH ± 10%	22.0	89m	62m

**Type: RCH-895**

Part Name	Stamp	Inductance <Within> ※ 1	D.C.R <Max.>(Ω) (at20°C)	Saturation Current(A) ※2	Temperature rise current (A)※3
RCH895NP-123K	123K	12mH ± 10%	25.0	73m	59m
RCH895NP-153K	153K	15mH ± 10%	29.1	68m	57m
RCH895NP-183K	183K	18mH ± 10%	38.9	66m	48m
RCH895NP-223K	223K	22mH ± 10%	44.9	59m	42m
RCH895NP-273K	273K	27mH ± 10%	55.7	52m	39m
RCH895NP-333K	333K	33mH ± 10%	64.2	48m	37m
RCH895NP-393K	393K	39mH ± 10%	74.2	42m	35m
RCH895NP-473K	473K	47mH ± 10%	96.4	38m	31m

※1: Measuring frequency  
   2.5 μ H ~ 9.2 μ H    at 7.96MHz  
   10 μ H ~ 82 μ H     at 2.52MHz  
   100 μ H ~ 47 mH     at 1 kHz

※2: Saturation current: The DC current at which the inductance decreases to 90% of it's initial value.

※3: Temperature rise current: The DC current at which the temperature rise is Δt=20°C.(Ta=20°C).