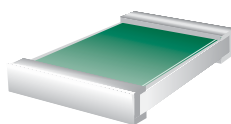


Thick Film Nickel Barrier Wraparound Surface Mount Chip Resistors

The ims RXI series of thick film wraparound surface mount chip resistors is ideal for most applications requiring an inexpensive, reliable chip resistor. The "X" designation in the RXI series is a variable that describes the subgroup type (Low ohm, Trimmable, etc). Please see the ordering information on the back for instructions. Thick film technology provides a stable resistor at a very affordable price. The wraparound terminations include a nickel barrier layer which affords excellent solderability and mechanical integrity. These chip resistors have the following features:

- High stability thick film resistor element
- 96% Al₂O₃ substrate material
- Nickel barrier layer for excellent solderability and mechanical integrity
- Trimmed to EIA standard values
- Tolerances to ± 0.5%
- Glass passivation of resistor element
- Available in bulk or on tape and reel
- 50 ppm available in RPI series only

Terminations

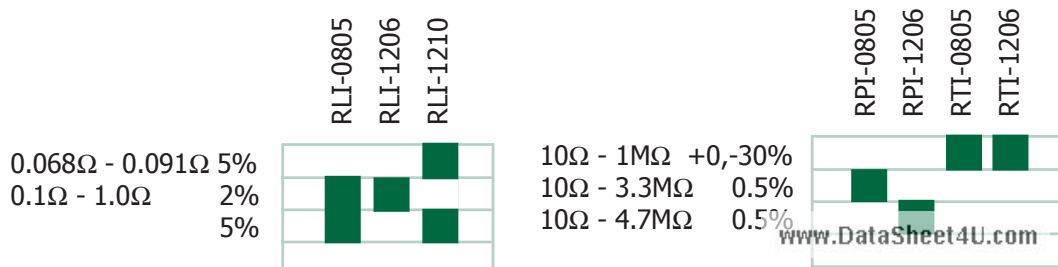


Full wraparound termination
nickel barrier layer

Resistance Ranges



¹Maximum resistance value is 100KΩ ²Minimum resistance value is 0.1Ω ±1% ³Maximum resistance value is 5.6MΩ Jumpers (0Ω) available in all sizes (RCI-0201,0402,0603 rated at 1 amp. All others rated at 2 amps ⁴22MΩ - 500MΩ available as special part. Contact **ims** for ranges and special P/N.



www.DataSheet4U.com
0201 0402
0603 0805
RXI
1206 1210
2010 2512
2512S



Features

Thick film technology

Full Wraparound

Nickel Barrier for excellent solderability

Resistance values from 0.068 ohm to 22 Megohm

Trimmable (RTI series)

Tolerances to 0.5 %

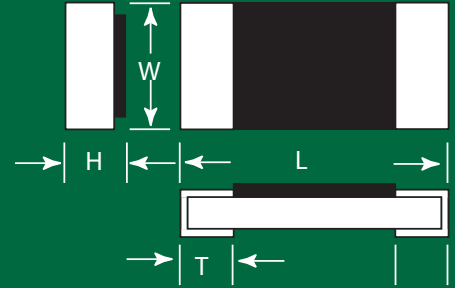
TCR to 50 ppm/ °C

ims International Manufacturing Services, Inc.

50 Schoolhouse Lane
Portsmouth, RI 02871
Tel (401) 683-9700
Fax (401) 683-5571
e-mail: ims@ims-resistors.com
<http://www.ims-resistors.com>

Dimensions

| Part Number | Length | Width | Height | Terminal |
|-------------|--------------|--------------|------------|--------------|
| RCI-0201 | 0.024 ± .002 | 0.012 ± .002 | 0.012 max. | 0.006 ± .002 |
| RCI-0402 | 0.039 ± .002 | 0.020 ± .004 | 0.016 max. | 0.010 ± .004 |
| RCI-0603 | 0.063 ± .006 | 0.031 ± .006 | 0.022 max. | 0.012 ± .004 |
| RCI-0805 | 0.079 ± .008 | 0.049 ± .004 | 0.026 max. | 0.016 ± .008 |
| RLI-0805 | 0.079 ± .006 | 0.049 ± .004 | 0.028 max. | 0.016 ± .008 |
| RCI-1206 | 0.126 ± .008 | 0.063 ± .006 | 0.028 max. | 0.020 ± .010 |
| RLI-1206 | 0.122 ± .008 | 0.063 ± .006 | 0.028 max. | 0.012 ± .008 |
| RLI-1210 | 0.122 ± .002 | 0.098 ± .006 | 0.028 max. | 0.012 ± .008 |
| RCI-2010 | 0.197 ± .008 | 0.098 ± .006 | 0.028 max. | 0.020 ± .012 |
| RCI-2512(S) | 0.248 ± .008 | 0.126 ± .010 | 0.028 max. | 0.026 ± .010 |



Characteristics

| | |
|------------------------|--|
| Operating Temperature | -55°C to +150°C |
| Short time overload | ± (1% + 0.05 Ω) Max. |
| Terminal strength | ± (1% + 0.05 Ω) Max. |
| Solder Heat Resistance | ± (1% + 0.05 Ω) Max. |
| Solderability | 95% minimum coverage |
| Temperature Cycle | ± (1% + 0.05 Ω) Max. |
| Load Life | 10 Ω ≤ R ≤ 1M Ω: ± (3% + 0.01 Ω) R < 10 Ω, R > 1M Ω: ± (5% + 0.1 Ω) |

Specifications

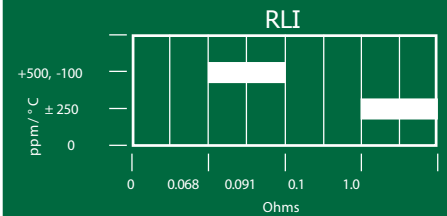
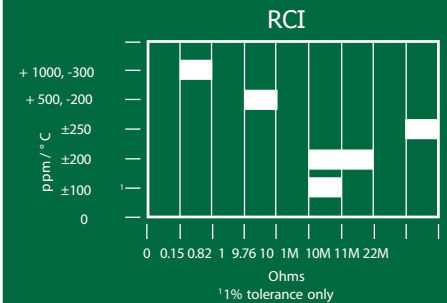
| | |
|-------------------------|---------|
| Maximum Working Voltage | |
| 0201 | 15 VDC |
| 0402, 0603 | 50 VDC |
| 0805 | 150 VDC |
| 1206, 2010, 2512, 2512S | 350 VDC |
| Rated power (70°C) | |
| 0201 | 50 mW |
| 0402 | 63 mW |
| 0603 | 100 mW |
| 0805 (low ohms) | 125 mW |
| 0805 | 175 mW |
| 1206 | 250 mW |
| 1210(RCI) | 250 mW |
| 1210(RLI) | 500 mW |
| 2010 | 500 mW |
| 2512 | 1000 mW |
| 2512S | 2000 mW |

Ordering Information

Example: 100Ω, 5%, 175 mW, 0805 resistor

| | |
|---------------------------------|--|
| Example: RCI - 0805 - 1000 J | Tolerance |
| RCI (Standard) | F - 1% |
| RLI (Low Ohm) | J - 5% |
| RPI (Precision) | K - 10% |
| RTI (Untrimmed U Tol. only) | U - +0, -30% |
| Form factor | Resistance value |
| 0201 0402 0603 | The first three digits are significant values. The fourth is the number of zeroes following. The R indicates a decimal point for resistance values less than 100Ω. |
| 0805(T) 1210 1206(T) | |
| 2010(T) 2512(T) 2512S | |
| "T" indicates custom value trim | |

TCR



Visit us on
the Web -
<http://www.ims-resistors.com>

Engineering Kits Available
Please contact your
nearest rep or contact
IMS directly.

ims International
Manufacturing
Services, Inc.

50 Schoolhouse Lane
Portsmouth, RI 02871
Tel (401) 683-9700
Fax (401) 683-5571
e-mail: ims@ims-resistors.com
<http://www.ims-resistors.com>