

# RDM8800

De ITEAD Wiki

## Contenido

- 1 Overview
- 2 Specifications
- 3 Electrical characteristics
- 4 Hardware
- 5 pinmap
- 6 Data formats
- 7 Interrupt pin
- 8 Download
- 9 Useful Links

## Overview

RDM8800 card reader is a module based on PN532 chip customized for 13.56MHz NFC RFID card, compatible with RDM6300 interface, which can read data directly from the serial interface.

Unlike ordinary RFID modules, RDM8800 integrates LGT8FF8A chip, compatible with Arduino library, thus we can modify the firmware to suit our own needs. Itead Studio also released the source codes of RDM8800 firmware, and users can make secondary development based on it.

## Specifications

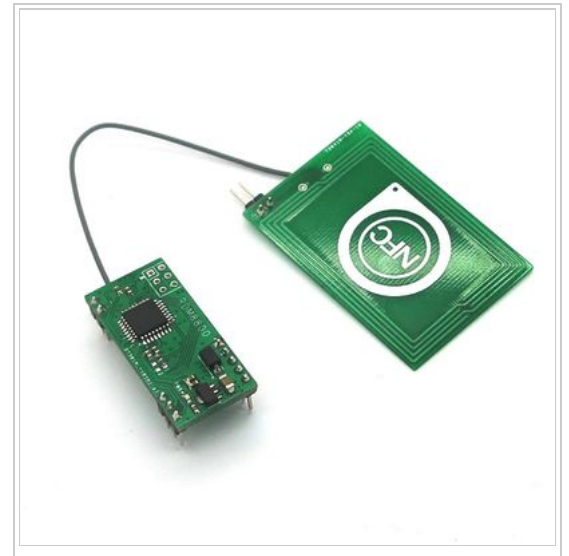
PCB size	38.1mm X 17.78mm X 1.6mm
Input voltage	5V
Interface	UART
Compatibility	With ISO 14443 Type A protocol
	With ISO 14443 Type B[1] protocol
Baud rate	9600

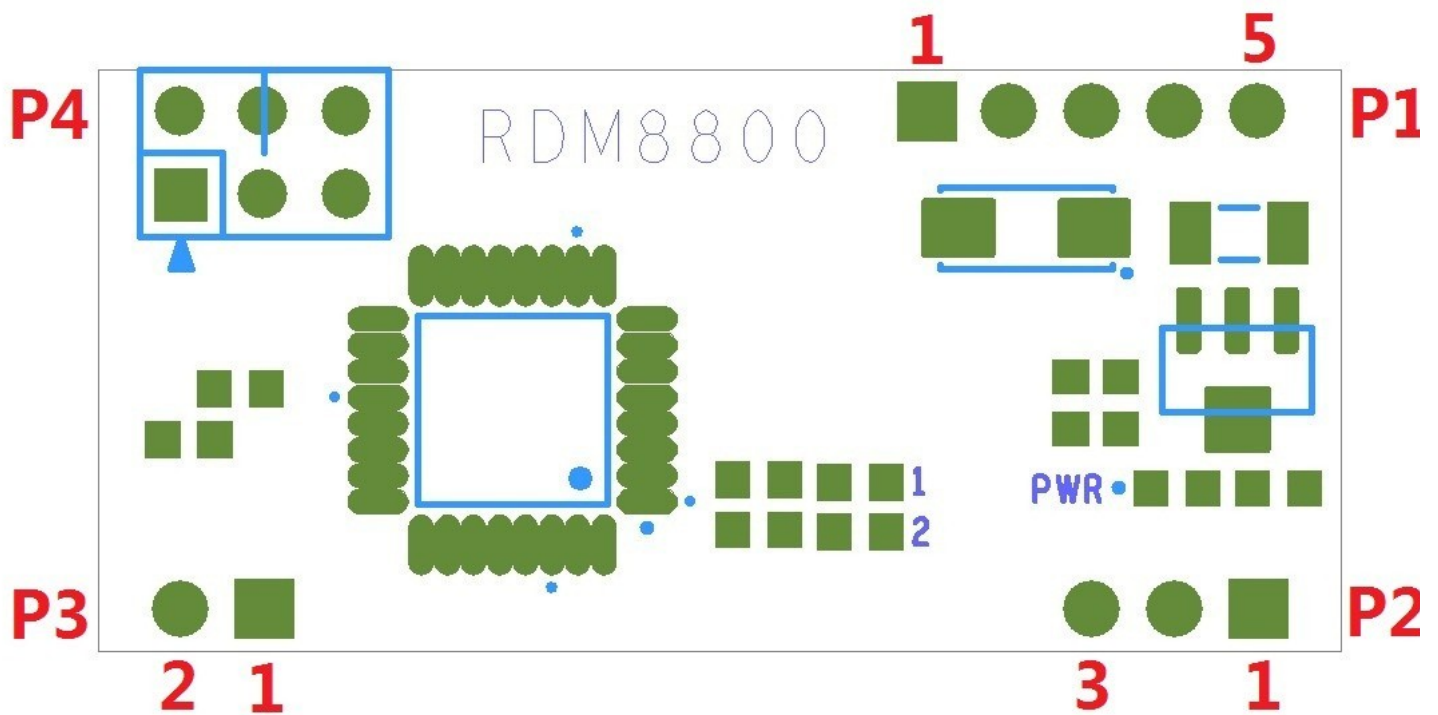
[1]: Version 1.0 firmware does not support ISO 14443 Type B at present, which requires users to make secondary development.

## Electrical characteristics

Parameter	Min.	Typical	Max.	Unit
Supply voltage	4.8	5	5.5	VDC
Consumption current (average)	-	80	-	mA
Logic input voltage	Vss-0.3	3.3	5	VDC

## Hardware





## pinmap

Pin	Pin	Pin name	Description
P1	Pin1	+5V(DC)	Power input
P1	Pin2	GND	Ground
P1	Pin3	NC	Unoccupied
P1	Pin4	RX(TTL)	UART input
P1	Pin5	TX(TTL)	UART output
P2	Pin1	LED	Interrupt pin
P2	Pin2	+5V(DC)	Power output
P2	Pin3	GND	Ground
P3	Pin1	ANT1	Antenna interface
P3	Pin2	ANT2	Antenna interface
P4	Pin1	SWD	SWD debugging interface
P4	Pin2	3.3V	Power output
P4	Pin3	SWC	SWD debugging interface
P4	Pin4	NC	Unoccupied
P4	Pin5	RST	Reset
P4	Pin6	GND	Ground

## Data formats

According to V1.0 firmware, there is one type of data output:

- Directly output a card N.O.

The serial port will output a 10-digit decimal ACSII code card N.O. directly, which will be followed by a break line "0x0D 0x0A".

For example: the card number is 46553491, the output data will be "0046553491", (HEX: "0x30 0x30 0x34 0x36 0x35 0x35 0x33 0x34 0x39 0x31 0x0D 0x0A").

## Interrupt pin

- LED

According to V1.0 firmware, once an ID N.O. is read, LED pin will output a 10ms high-level pulse.

## Download

Datasheet ([ftp://imall.iteadstudio.com/Modules/IM131218001/DS\\_IM131218001.pdf](ftp://imall.iteadstudio.com/Modules/IM131218001/DS_IM131218001.pdf))

Schematic ([ftp://imall.iteadstudio.com/Modules/IM131218001/SCH\\_IM131218001.pdf](ftp://imall.iteadstudio.com/Modules/IM131218001/SCH_IM131218001.pdf))

Firmware ([ftp://imall.iteadstudio.com/Modules/IM131218001/FW\\_IM131218001.zip](ftp://imall.iteadstudio.com/Modules/IM131218001/FW_IM131218001.zip))

## Useful Links

< Design files of RDM8800 > ([https://github.com/iteadproj/IM131218001\\_RDM8800](https://github.com/iteadproj/IM131218001_RDM8800))

< A RDM8800 firmware reads Singapore's EZLink cards > (<https://github.com/billbsing/RDM8800-EZ-Link>)

Obtenido de «<http://wiki.iteadstudio.com/index.php?title=RDM8800&oldid=1905>»

- 
- Esta página fue modificada por última vez el 2 jul 2014, a las 06:59.
  - Esta página se ha visitado 89 veces.