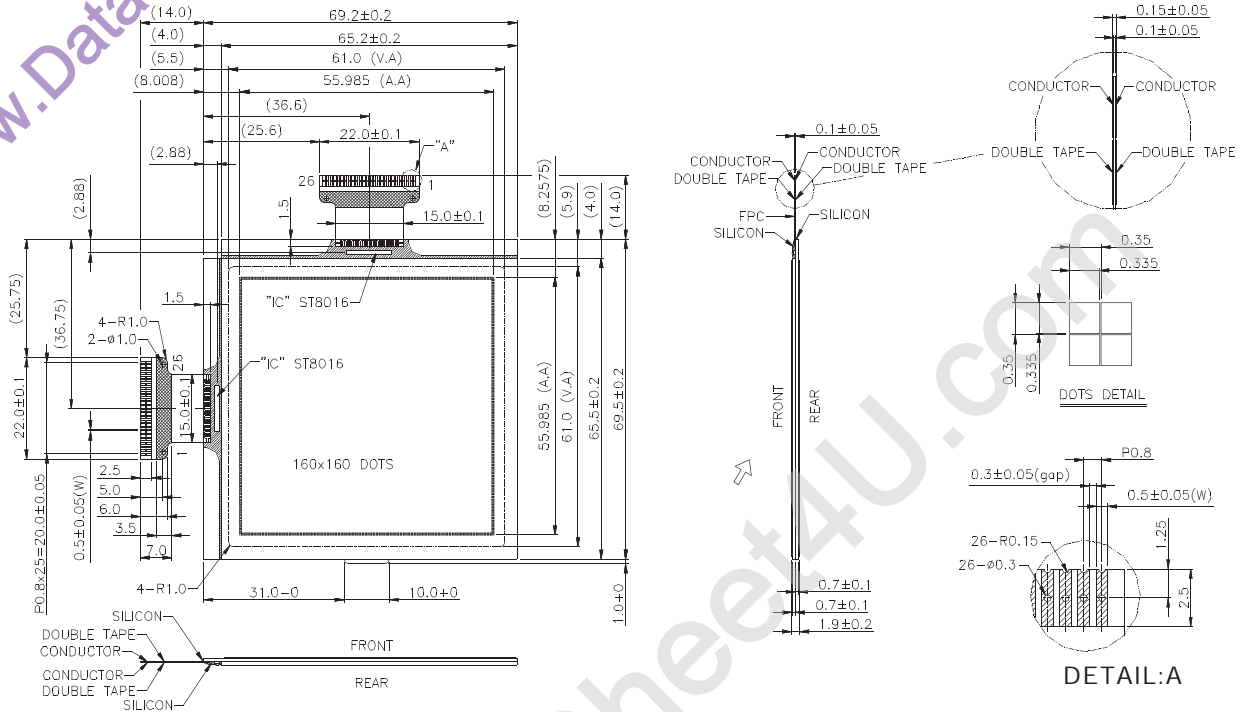


液晶之友 电话: 020-33819057  
 Http://www.lcdfriends.com



**Features:**

- Resolution: 160S\*160C Dots
- Duty ratio: 1/160
- LCD option: FSTN
- Backlight option(H2/H1mm): None(-/1.9)

Pin Assignment		
Pin No.	Symbol	Function
1~3	V0R,V12R,V43R	Bias power supply for LCD drive voltage
4	VSS	Ground
5	MD	Mode selection
6	FR	AC signal input for LCD drive waveform
7	EI01	Input/output for chip selection
8	LP	Latch pulse input for display data
9	DISPOFF	Control input for output of non-select
10	XCK	Clock input for taking display data
11~18	DI7~DI0	Display data input
19	EIO2	Input/output selection
20	S/C	Segment/common mode selection
21	VDD	Logic power supply
22	L/R	Input selection to reading direction
23	VSS	Ground
24~26	V43L,V12L,V0L	Bias power supply for LCD drive voltage

Absolute Maximum Rating									
Item	Symbol	Condition	Min.	Max.	Units				
Supply for logic voltage	V <sub>dd</sub> -V <sub>ss</sub>	25°C	-0.3	7.0	V				
LCD driving supply voltage	V <sub>5</sub> -V <sub>ss</sub>	25°C	-0.3	+30.0	V				
Input Voltage	V <sub>IN</sub>	25°C	-0.3	V <sub>DD</sub> +0.3	V				
Electrical Characteristics									
Item	Symbol	Condition	Min.	Typical	Max.	Units			
Power supply voltage	V <sub>dd</sub> -V <sub>ss</sub>	25°C	2.7	3.0	5.5	V			
LCD operation voltage	V <sub>OP</sub>	Top	N	W	N	W	N	W	V
		-20°C	-	-	-	20.6	-	-	V
		0°C	-	-	-	-	-	-	V
		25°C	-	-	-	19.0	-	-	V
		50°C	-	-	-	-	-	-	V
		70°C	-	-	17.0	-	-	V	
LCM current consumption (No B/L)	I <sub>dd</sub>	V <sub>dd</sub> =3.0V	-	0.1	-	mA			
	I <sub>ee</sub>	V <sub>ee</sub> =19.0V	-	4.0	-	mA			
Backlight current consumption	-	-	-	-	-	mA			