

## RE200B

### TYPE OF SENSOR

BALANCED DIFFERENTIAL (SERIES OPPOSED TYPE.)

### PHYSICAL CONFIGURATION

- 1) PACKAGE : TO - 5 METAL CAN WITH DIMENSIONS SHOWN IN FIGURE 1-C (NICKEL-PLATED)
- 2) ELEMENT GEOMETRY : TWO SENSITIVE AREAS 2.0 mm LONG, 1.0 mm AND SPACED 1.0 mm APART.
- 3) ELEMENT ORIENTATION : SEE FIGURE 1 - B
- 4) LEAD CONFIGURATION : SEE FIGURE 1-C, 1-D

### ELECTRICAL CHARACTERISTICS (AT 25 ± 5 °C)

- 1) CIRCUIT CONFIGURATION : THREE-TERMINAL SENSOR WITH SOURCE FOLLOWER SEE FIGURE 2
- 2) OPERATING VOLTAGE : 3 ... 10 V DC ( $R_s$  : 47 K $\Omega$ )
- 3) SOURCE VOLTAGE : 0.35 ... 1.5 V ( $V_D$  : 5V,  $R_s$  : 47 K $\Omega$ )
- 4) SIGNAL OUTPUT : MIN. 2.5 Vp - p (TYP. 4.0 Vp - p)

SIGNAL OUTPUT IS MEASURED AT CHOPPER FREQUENCY OF 1 Hz WHEN CONNECTED TO THE AMPLIFIER OF GAIN 72.5 dB (AT 1 Hz) AND SUBMITTED TO THE EMISSION OF INFRARED ENERGY OF 13  $\mu$ W / P FROM 420 K BLACK BODY.

SEE FIGURE 3

- 5) NOISE OUTPUT : MAX. 250 mVp - p (TYP. 90 mVp - p) NOISE OUTPUT SHALL BE MEASURED FOR 20 SECONDS WHEN CONNECTED TO THE AMPLIFIER OF GAIN 72.5 dB AND SHUT OUT FROM INFRARED ENERGY.

SEE FIGURE 3

- 6) BALANCE OUTPUT : MAX. 15 %

$$\left( \frac{BO}{|SA+SB|} \right) \div 0.15$$

BO : BALANCE OUTPUT

SA : SIGNAL OUTPUT ON ELEMENT A

SB : SIGNAL OUTPUT ON ELEMENT B

BALANCE OUTPUT IS MEASURED AT CHOPPER FREQUENCY OF 1 Hz WHEN CONNECTED TO THE AMPLIFIER OF GAIN 72.5 dB (AT 1 Hz) AND SUBMITTED TO THE EMISSION OF INFRARED ENERGY OF 13  $\mu$ W / P FROM 420 K BLACK BODY.

SEE FIGURE 3

- 7) FREQUENCY RESPONSE : 0.3 Hz TO 3.0 Hz / ± 10 dB

### OPTICAL CHARACTERISTICS

- 1) FIELD OF VIEW : 138° FROM EDGE OF ELEMENT ON AXIS X : 125° FROM EDGE OF ELEMENT ON AXIS Y : SEE FIGURE 1 - A
- 2) FILTER SUBSTRATE : SILICON
- 3) CUT ON (5 % T ABS) : 5.0 ± 0.5  $\mu$ m
- 4) TRANSMISSION : : 70 % AVERAGE 7 ... 14  $\mu$ m

### ENVIRONMENTAL REQUIREMENTS

- 1) OPERATING TEMPERATURE : -30 °C TO + 70 °C
- 2) STORAGE TEMPERATURE : -40 °C TO + 80 °C
- 3) RELATIVE HUMIDITY : THE SENSOR SHALL OPERATE WITHOUT INCREASE IN NOISE OUTPUT WHEN EXPOSED TO 90 ... 95 % RH AT 30 °C CONTINUOUSLY.
- 4) HERMETIC SEAL : THE SENSOR SHALL BE SEALED TO WITHSTAND A VACUUM OF 160 MILLIMETERS OF MERCURY.

# RE200B 紅外探測器使用說明書

## SPECIFICATION OF PYROELECTRIC PASSIVE INFRARED SENSOR

MODEL NO. RE200B

PART NO. \_\_\_\_\_

6) BALANCE OUTPUT : MAX. 15 %

$$[ BO / | SA+SB | ] \leq 0.15$$

BO : BALANCE OUTPUT

SA : SIGNAL OUTPUT ON ELEMENT A

SB : SIGNAL OUTPUT ON ELEMENT B

BALANCE OUTPUT IS MEASURED AT CHOPPER FREQUENCY OF 1 Hz WHEN CONNECTED TO THE AMPLIFIER OF GAIN 72.5 dB (AT 1 Hz) AND SUBMITTED TO THE EMISSION OF INFRARED ENERGY OF  $13 \mu W/cm^2$  FROM 420 K BLACK BODY.  
SEE FIGURE 3

7) FREQUENCY RESPONSE : 0.3 Hz TO 3.0 Hz /  $\pm 10$  dB

### OPTICAL CHARACTERISTICS

- 1) FIELD OF VIEW : 138° FROM CENTER OF ELEMENT ON AXIS X  
: 125° FROM CENTER OF ELEMENT ON AXIS Y  
: SEE FIGURE 1-A
- 2) FILTER SUBSTRATE : SILICON
- 3) CUT ON (5 %T ABS) :  $5.0 \pm 0.5 \mu m$
- 4) TRANSMISSION :  $\geq 70$  % AVERAGE 7~14  $\mu m$

### ENVIRONMENTAL REQUIREMENTS

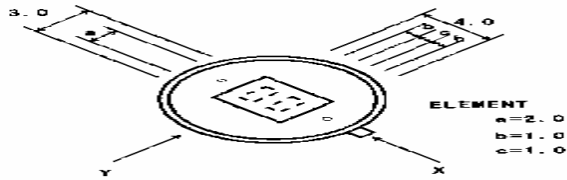
- 1) OPERATING TEMPERATURE : -30 °C TO +70 °C
- 2) STORAGE TEMPERATURE : -40 °C TO +80 °C
- 3) RELATIVE HUMIDITY :  
THE SENSOR SHALL OPERATE WITHOUT INCREASE IN NOISE OUTPUT WHEN EXPOSED TO 90 ~ 95 % RH AT 30 °C CONTINUOUSLY.
- 4) HERMETIC SEAL :  
THE SENSOR SHALL BE SEALED TO WITHSTAND A VACUUM OF .160 MILLIMETERS OF MERCURY.

CONFIGURATION (FIGURE 1)

FIELD OF VIEW  
(FIGURE 1-A)

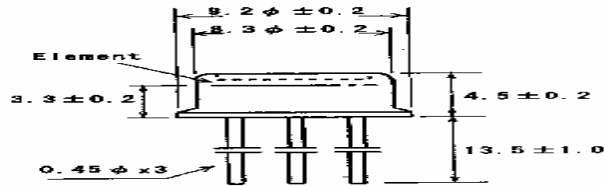


TOP VIEW  
(FIGURE 1-B)

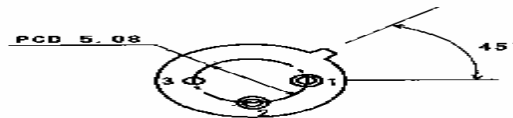


ELEMENT  
a=2.0  
b=1.0  
c=1.0

SIDE VIEW  
(FIGURE 1-C)

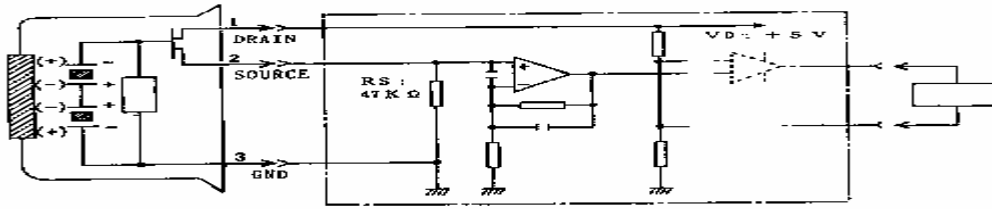


BASE VIEW  
(FIGURE 1-D)



1  
2  
3  
4  
5  
6  
7  
8  
9  
10  
11  
12  
13  
14  
15  
16  
17  
18  
19  
20  
21  
22  
23  
24  
25  
26  
27  
28  
29  
30  
31  
32  
33  
34  
35  
36  
37  
38  
39  
40  
41  
42  
43  
44  
45  
46  
47  
48  
49  
50  
51  
52  
53  
54  
55  
56  
57  
58  
59  
60  
61  
62  
63  
64  
65  
66  
67  
68  
69  
70  
71  
72  
73  
74  
75  
76  
77  
78  
79  
80  
81  
82  
83  
84  
85  
86  
87  
88  
89  
90  
91  
92  
93  
94  
95  
96  
97  
98  
99  
100

CIRCUIT CONFIGURATION (FIGURE 2)



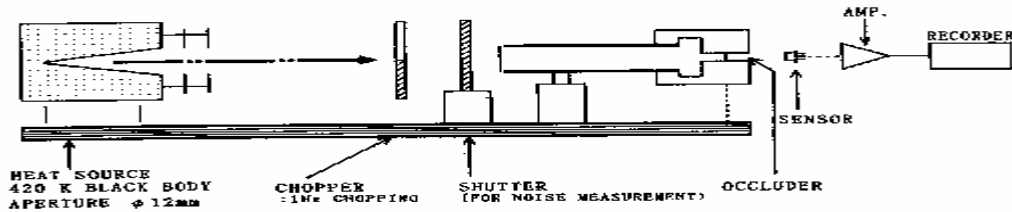
SENSOR

MEASUREMENT AMP.

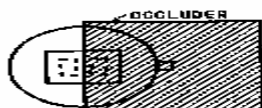
RECORDER

\* MEASUREMENT AMP.: NON-INVERTED TYPE, GAIN 72.5 dB AT 1 Hz 0.4 ~ 2.7 Hz / -3 dB

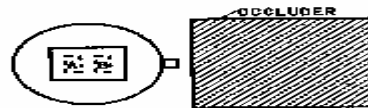
TEST SET-UP BLOCK DIAGRAM (FIGURE 3)



OCCLUDER POSITION



SIGNAL OUTPUT



BALANCE OUTPUT



NOISE OUTPUT

※ NOTES.

1. DESIGN RESTRICTIONS/PRECAUTIONS

FOR OUTDOOR APPLICATIONS, BE SURE TO APPLY SUITABLE SUPPLEMENTARY OPTICAL FILTER AND DRIP-PROOF, ANTI-DEW CONSTRUCTION. THIS SENSOR IS DESIGNED FOR INDOOR USE. IN CASES WHERE SECONDARY ACCIDENTS DUE TO OPERATION FAILURE OR MALFUNCTIONS CAN BE ANTICIPATED, ADD A FAIL SAFE FUNCTION TO THE DESIGN.

2. USAGE RESTRICTIONS/PRECAUTIONS

TO PREVENT SENSOR MALFUNCTIONS, OPERATIONAL FAILURE OR ANY DETERIORATION OF ITS CHARACTERISTICS, DO NOT USE THIS SENSOR IN THE FOLLOWING, OR SIMILAR, CONDITIONS.

- A. IN RAPID ENVIRONMENTAL TEMPERATURE CHANGES.
- B. IN STRONG SHOCK OR VIBRATION.
- C. IN A PLACE WHERE THERE ARE OBSTRUCTING MATERIALS (GLASS, FOG, ETC.) THROUGH WHICH INFRARED RAYS CANNOT PASS WITHIN DETECTION AREA.
- D. IN FLUID, CORROSIVE GASES AND SEA BREEZE.
- E. CONTINUAL USE IN HIGH HUMIDITY ATMOSPHERE.
- F. EXPOSED TO DIRECT SUN LIGHT OR HEADLIGHTS OF AUTOMOBILES.
- G. EXPOSED TO DIRECT WIND FROM A HEATER OR AIR CONDITIONER.

3. ASSEMBLY RESTRICTIONS/PRECAUTIONS

SOLDERING -----

- A. USE SOLDERING IRONS WHEN SOLDERING.
- B. AVOID KEEPING PINS OF THIS SENSOR HOT FOR A LONG TIME AS EXCESSIVE HEAT MAY CAUSE DETERIORATION OF ITS QUALITY. (E.G. WITHIN 5 SEC. AT 350 °C)

WASHING -----

- A. BE SURE TO WASH OUT ALL FLUX AFTER SOLDERING AS REMAINDER MAY CAUSE MALFUNCTIONS.
- B. USE A BRUSH WHEN WASHING. WASHING WITH AN ULTRASONIC CLEANER MAY CAUSE OPERATIONAL FAILURE.

4. HANDLING AND STORAGE RESTRICTIONS/PRECAUTIONS

TO PREVENT SENSOR MALFUNCTIONS, OPERATIONAL FAILURE, APPEARANCE DAMAGE OR ANY DETERIORATION OF ITS CHARACTERISTICS, DO NOT EXPOSE THIS SENSOR TO THE FOLLOWING OR SIMILAR, HANDLING AND STORAGE CONDITIONS.

- A. VIBRATION FOR A LONG TIME.
- B. STRONG SHOCK.
- C. STATIC ELECTRICITY OR STRONG ELECTROMAGNETIC WAVES.
- D. HIGH TEMPERATURE AND HUMIDITY FOR A LONG TIME.
- E. CORROSIVE GASES OR SEA BREEZE.
- F. DIRTY AND DUSTY ENVIRONMENTS THAT MAY CONTAMINATE THE OPTICAL WINDOW.

SENSOR TROUBLES RESULTING FROM MISUSE, INAPPROPRIATE HANDLING OR STORAGE ARE NOT THE MANUFACTURER'S RESPONSIBILITY.

MODEL NO. : RE200B	PAGE	DRAWING NO.	REV :
	6 / 6	1707982	A
PART NO. :	☉ NIPPON CERAMIC CO., LTD.		