

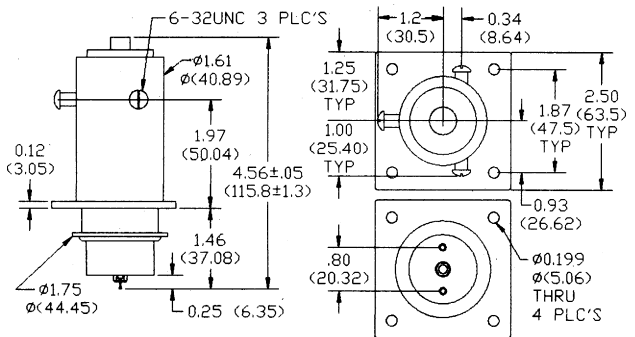


SPECIFICATIONS

Model Number	RF10B
Test Voltage (kV Peak) 60 Hz	20
Rated Operating Voltage (kV Peak)	
DC or 60 Hz	15
2.5 MHz	13
16 MHz	10
32 MHz	8
Continuous Current, Carry (Amps, RMS)	
DC or 60 Hz	75
2.5 MHz	22
16 MHz	15
32 MHz	12
Contact Capacitance (pF)	
Between Open Contacts	1.8
Open Contacts to Ground	1.5
Contact Resistance (mΩ)	12
Operate Time (ms. Max.)	30
Release Time (ms. Max.)	10
Pull-in Voltage @ 25° C, 26.5 VDC Coil	16
Dropout Voltage @ -55 to 125° C, 26.5 VDC Coil	1-10
Coil Resistance (Ohms ± 10%) 26.5 VDC Coil	225
Shock, 1/2 Sine 11 ms. (Peak g's)	30
Vibration, Peak g's	
55-500 Hz	5
55-1000 Hz	-
55-2000 Hz	-
Expected Mechanical Life Cycles (X10 ⁶)	.1
Weight, Ounces (Grams) Max.	16 (453)



- RF10B-26S**
 Ground isolated relay.
 Excellent performance for both DC and RF circuits.
 Cont. Current to 10 A at 16 MHz. Interrupts 45 KW (9 kV or 5 A max.)
 Flange mount.



MILITARY CROSS REFERENCE

Model Number	Military Specification	Military Drawing
RB1D-26S	MIL-R-83725	M83725/1-004
RB1D-26N300	MIL-R-83725	M83725/1-005
RB1D-26N400	MIL-R-83725	M83725/1-006
RB1E-26S	MIL-R-83725	M83725/1-001
RB1E-26N300	MIL-R-83725	M83725/1-002
RB1E-26N400	MIL-R-83725	M83725/1-003
RF10B-6S	MIL-R-83725	M83725/15-001
RF10B-12S	MIL-R-83725	M83725/15-002
RF10B-26S	MIL-R-83725	M83725/15-003
RF10B-48S	MIL-R-83725	M83725/15-004
RF10B-115S	MIL-R-83725	M83725/15-005

OPTIONAL COILS	6 Vdc	48 Vdc	115 Vdc
Model Number	Coil Resistance (Ohms ± 10%)		
RF10B	12.0	735	3900