

## Fast Recovery Diodes

### RF505TF6S

#### [ Product description ]

ROHM's fast recovery diodes are ultra high-speed, low VF, and suited for significant efficiency increase of switching power supply as well as reduction of switching loss.

#### Features

EHigh-reliability TO-220 package product.

#### Product specifications

##### Absolute maximum ratings (Ta=25°C)

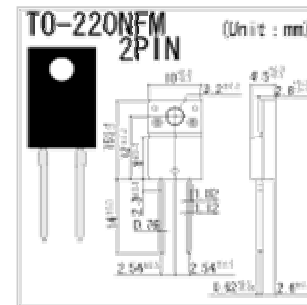
Rated parameters	Standard value	Conditions
Repetitive peak reverse voltage $V_{RM}(V)$	600	
Reverse voltage(DC) $V_R(V)$	600	
Forward current $I_F$	-	
Average rectified forward current $I_O(A)$	5	
Forward current surge peak $I_{FSM}(A)$	80	60Hz/1cyc
Junction temperature $T_j(^{\circ}C)$	150	
Storage temperature $T_{stg}(^{\circ}C)$	-55 to +150	

#### Outline

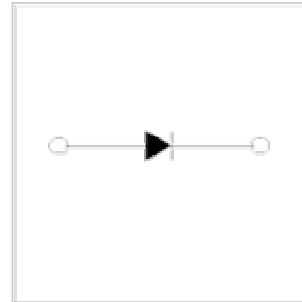


15x10(t=4.5)

#### Dimensions



#### Equivalent circuit diagram



\*The contents described here are just outline for introduction.

Please obtain the specification sheets from us for thorough check before use.