



**SPECIFICATIONS**

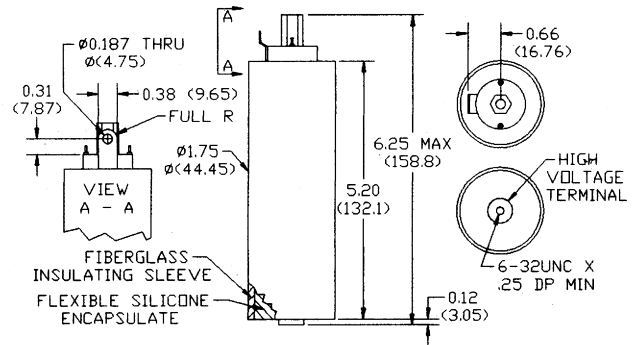
Model Number	RGH3
Test Voltage (kv Peak)	
60 Hz	70
Rated Operate Voltage (kV Peak)	
DC or 60 Hz	70
Continuous Current, Carry (Amps, RMS)	
DC or 60 Hz	115
Contact Resistance (mΩ)	1000 *
Operate Time (ms. Max.)	N/A
Release Time (ms. Max.)	15
Pull-in Voltage @ -55 to 25° C (12 VDC)	18
Dropout Voltage @ -55 to 125° C (12 VDC)	16
Coil Resistance (Ohms ± 10 %) (12 VDC Coil)	24
Shock, 1/2 Sine 11 ms. (Peak g's)	30
Vibration, Peak g's 55-500 Hz	10
Expected Mechanical Life Cycles (X10 <sup>6</sup> )	5
Weight, Ounces (Grams) Max.	16 (454)

\* Contact Resistance of gas filled relays is measured at 28 VDC, 1 Amp.



- **RGH3-24D2524**  
N/C grounding switch.  
High Voltage rating  
for dc applications.

Note: 24 Vdc coil intermittent duty use only. Use 60 Ohm dropping resistor for continuous hold current.



For a variation of the RGH3 please contact our Sales / Marketing Department for further information.