

SURFACE MOUNT RECTIFIERS

VOLTAGE RANGE: 50 --- 1000 V
CURRENT: 0.5 A

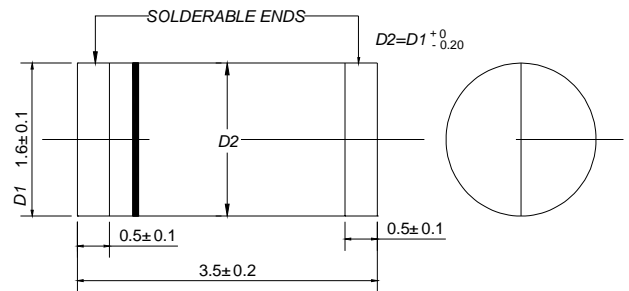
FEATURES

- Plastic package has underwriters laboratories flammability classification 94V-0
- Glass passivated chip junction
- For surface mount applications
- High temperature metallurgically bonded construction
- Cavity-free glass passivated junction
- High temperature soldering guaranteed: 450 /5 seconds at terminals. Complete device sub-mersible temperature of 265 for 10 seconds in solder bath

MECHANICAL DATA

- Case: JEDEC DO-213AA, molded plastic
- Terminals: Axial lead ,solderable per MIL- STD-750, Method 2026
- Polarity: Color band denotes cathode
- Weight: 0.0014 ounces, 0.036 grams
- Mounting position: Any

DO - 213AA



Dimensions in millimeters

MAXIMUM RATINGS AND ELECTRICAL CHARACTERISTICS

Ratings at 25 ambient temperature unless otherwise specified.

Single phase, half wave, 60 Hz, resistive or inductive load. For capacitive load, derate current by 20%.

		RGL 34A	RGL 34B	RGL 34D	RGL 34G	RGL 34J	RGL 34K	RGL 34M	UNITS
Maximum recurrent peak reverse voltage	V_{RRM}	50	100	200	400	600	800	1000	V
Maximum RMS voltage	V_{RMS}	35	70	140	280	420	560	700	V
Maximum DC blocking voltage	V_{DC}	50	100	200	400	600	800	1000	V
Maximum average forward rectified current $T_T=55$	$I_{(AV)}$	0.5							A
Peak forward surge current 8.3ms single half-sine-wave superimposed on rated load (JEDEC Method)	I_{FSM}	10							A
Maximum instantaneous forward voltage @0.5A	V_F	1.3							V
Maximum reverse current @ $T_A=25$ at rated DC blocking voltage @ $T_A=125$	I_R	5.0 50							μA
Maximum reverse recovery time (Note 1)	t_{rr}	150			250	500			ns
Typical junction capacitance (Note 2)	C_j	4.0							pF
Typical thermal resistance (Note 3)	$R_{\theta JA}$	150							/W
Operating junction temperature range	T_j	- 55 ---- +175							
Storage temperature range	T_{STG}	- 55 ---- +175							

NOTE: 1. Measured with $I_F=0.5A, I_R=1.0A, I_{rr}=0.25A$

www.galaxycn.com

2. Measured at 1.0MHz and applied reverse voltage of 4.0V DC.

3. Thermal resistance from junction to ambient, 0.24x0.24"(6.0x6.0mm) copper pads to each terminal.

FIG.1 – FORWARD CURRENT DERATING CURVE

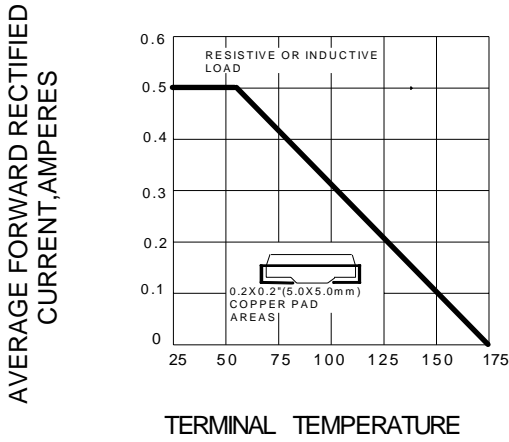


FIG.2 – MAXIMUM NON-REPETITIVE PEAK FORWARD SURGE CURRENT

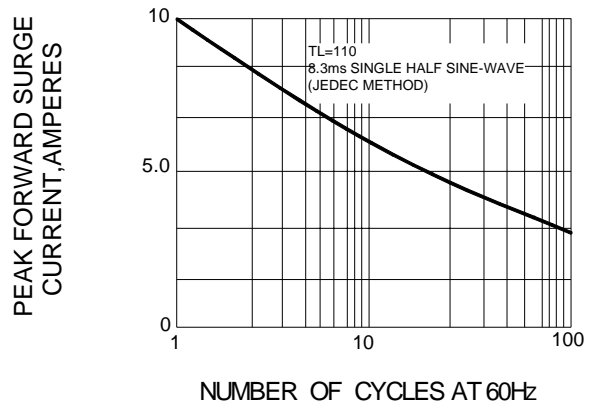


FIG.3 – TYPICAL INSTANTANEOUS FORWARD CHARACTERISTICS

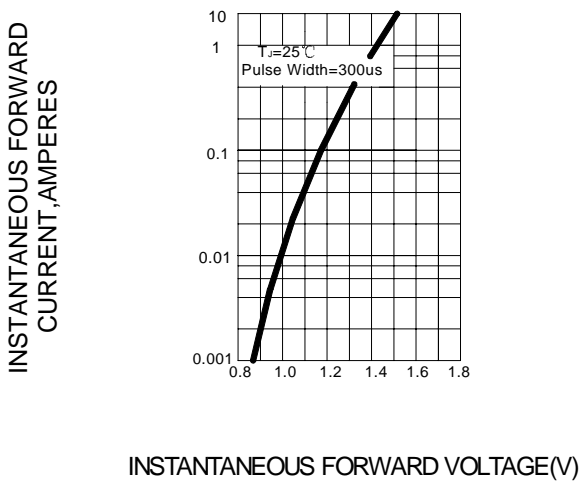


FIG.4 – TYPICAL REVERSE CHARACTERISTICS

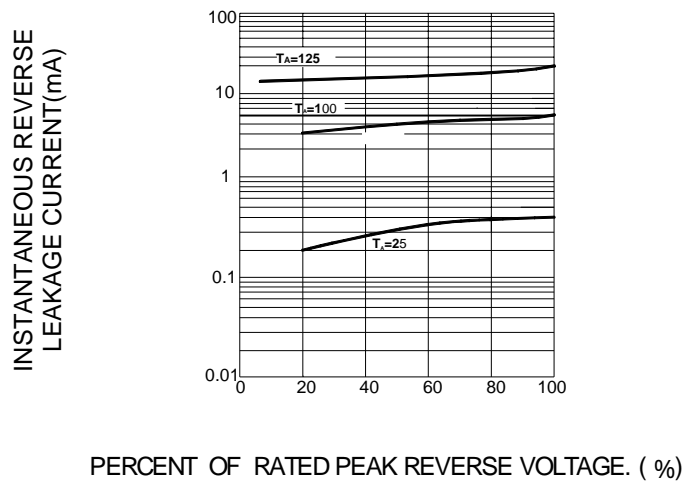
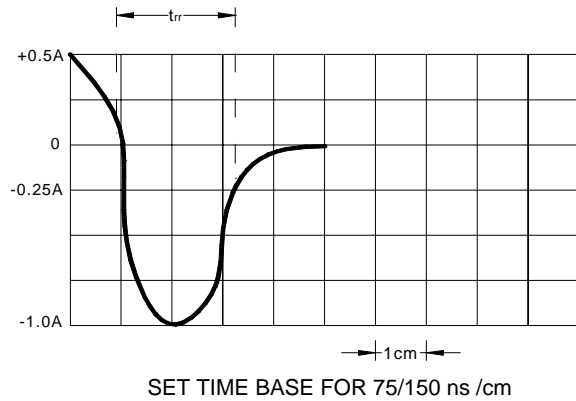
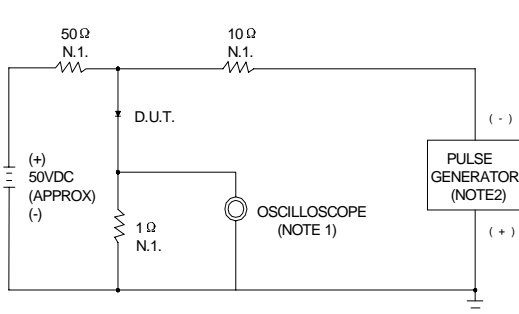


FIG.5 – REVERSE RECOVERY TIME CHARACTERISTIC AND TEST CIRCUIT DIAGRAM



NOTES: 1. RISE TIME=7ns MAX. INPUT IMPEDANCE=1MΩ, 22pF
2. RISE TIME=10ns MAX. SOURCE IMPEDANCE=50Ω