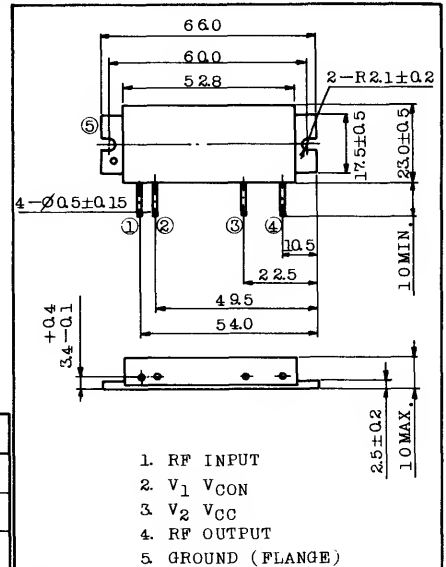


800MHZ UHF POWER AMPLIFIER MODULE (FM)

Unit in mm

FEATURES:

- . Output Power : $P_o \geq 15W$
- . Minimum Gain : $G_p = 18.7dB$
- . Efficiency : $\eta_T \geq 30\%$
- . 50Ω Input/Output Impedance
- . Guaranteed Stability



MAXIMUM RATINGS (Tc=25°C)

CHARACTERISTIC	SYMBOL	RATING	UNIT
DC Supply Voltage	VCC	15	V
DC Supply Voltage	VCON	15	V
RF Input Power	Pi	300	mW
Operating Case Temperature Range	Tc(OP)	-30 ~ 100	°C
Storage Temperature Range	Tstg	-40 ~ 110	°C

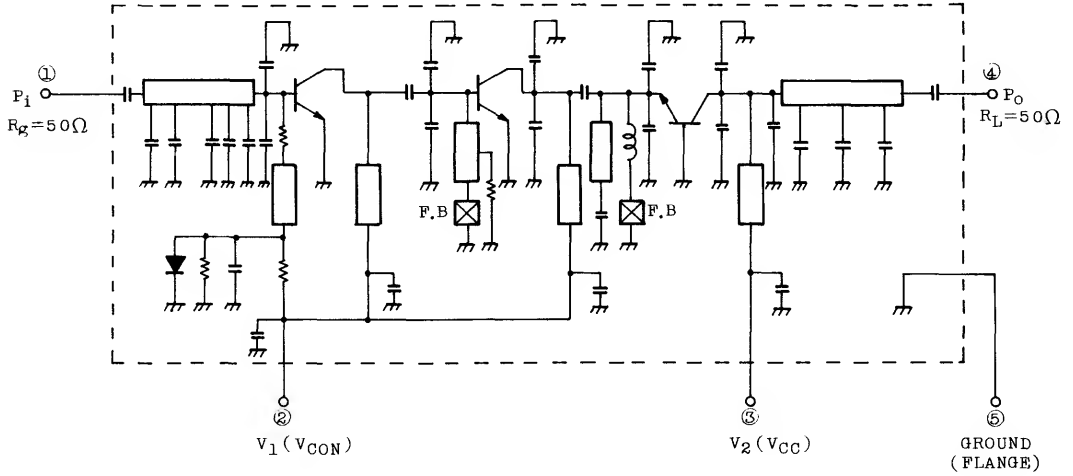
JEDEC	-
EIAJ	-
TOSHIBA	5-53

CHARACTERISTICS (Tc=25°C)

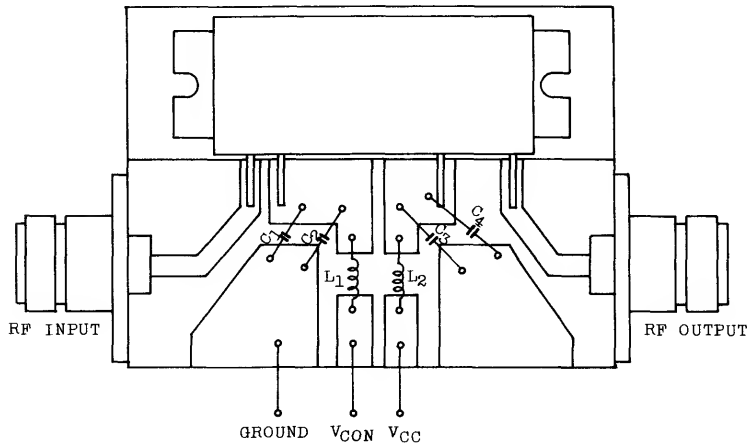
CHARACTERISTIC	SYMBOL	TEST CONDITION	MIN.	TYP.	MAX.	UNIT
Frequency Range	f _{range}	-	806	-	825	MHz
Output Power	P _i	P _o =15W VCC=12.5V, VCON=1.25V Z _g =Z _l =50Ω	-	80	200	mW
Power Gain	G _p		18.7	22.7	-	dB
Total Efficiency	η _T		30	35	-	%
Input VSWR	VSWR _{in}		-	1.5	2.5	-
Harmonics	HRM		-	-30	-25	dB
Load Mismatch	-	VCC=15V, VCON=15V P _o =18W VSWR load 20:1 all phase	No Degradation			-
Stability	-	VCC=12.5V, P _i =100 to 200mW VCON=0 ~ 15V VSWR load 3:1 all phase	All spurious output than 60dB below desired signal			-

S-AU7

SCHEMATIC



TEST MOUNT



$C_1, C_3 : 1500\text{pF}$

$C_2, C_4 : 1\mu\text{F}$

$L_1, L_2 : \varnothing 0.8 \text{ Ag PLATED WIRE, 8T 5ID}$

