

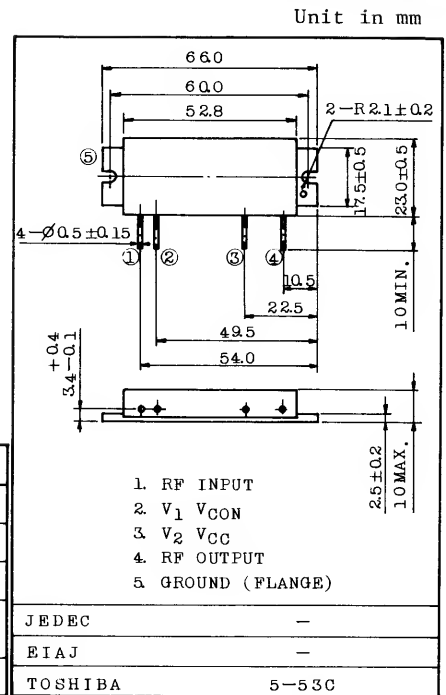
VHF POWER AMPLIFIER MODULE (HAM FM)

FEATURES:

- . Output Power : $P_o \cong 15W$
- . Minimum Gain : $G_p \cong 18.7dB$
- . Efficiency : $\eta_T \cong 48\%$
- . 50Ω Input/Output Impedance
- . Guaranteed Stability

MAXIMUM RATINGS ($T_c=25^\circ C$)

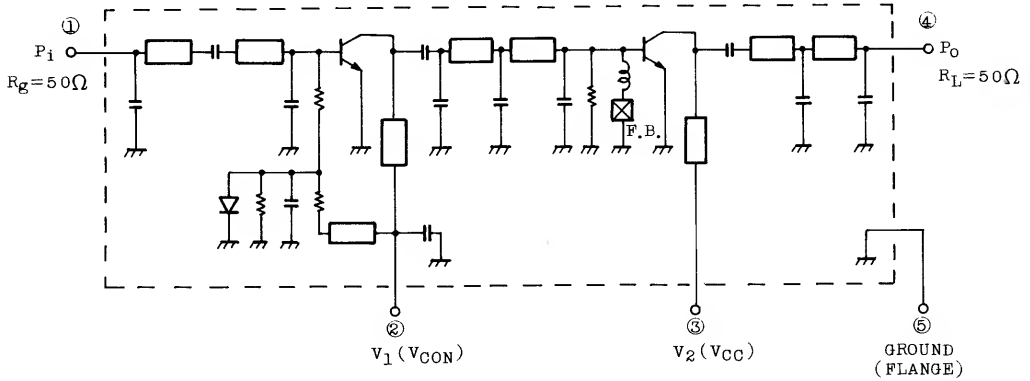
CHARACTERISTIC	SYMBOL	RATING	UNIT
DC Supply Voltage	VCC	16	V
DC Supply Voltage	VCON	16	V
RF Input Power	Pi	300	mW
Operating Case Temperature Range	Tc(OP)	-30 ~ 100	°C
Storage Temperature Range	Tstg	-40 ~ 110	°C



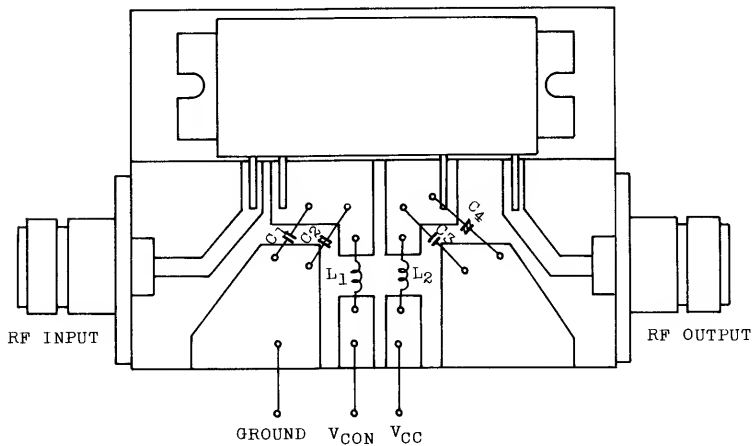
CHARACTERISTIC	SYMBOL	TEST CONDITION	MIN.	TYP.	MAX.	UNIT
Frequency Range	f _{range}	-	144	-	148	MHz
Output Power	P _o	P _i =200mW VCC=12.5V, VCON=12.5V Z _g =Z _l =50Ω	15	20	-	W
Power Gain	G _p		18.7	20	-	dB
Total Efficiency	η _T		48	53	-	%
Input VSWR	VSWR _{in}		-	1.5	2	-
Harmonics	HRM		-	-30	-25	dB
Load Mismatch	-	VCC=15V, VCON=12.5V P _o =18W VSWR load 20:1 all phase	No Degradation			-
Stability	-	VCC=12.5V, P _i =200mW VCON=0 ~ 12.5V VSWR load 3:1 all phase	All spurious output than 60dB below desired signal			-

S-AV5

SCHEMATIC



TEST MOUNT



- C₁, C₃ : 15000pF
- C₂, C₄ : 1 μF
- L₁, L₂ : ∅0.8 Ag PLATED WIRE, 8T, 51D

