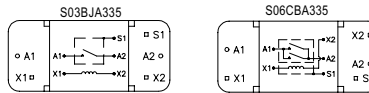
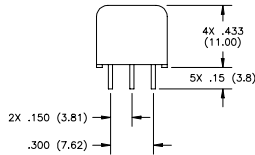
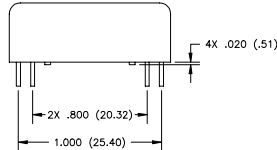
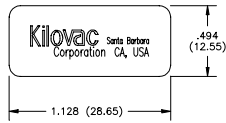
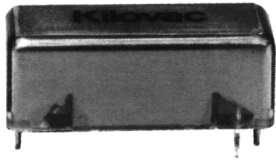


**Kilovac S03BJA335 & S06CBA335 No Load Switching**



1. Dimensions in parentheses are in millimeters.
2. Pin dimension tolerances are as follows:  
Lengths: +/- .04 (1.0)  
Spacing: +/- .006 (.15)
3. Pins A1 and A2 are .028 (.71); pins S1, X1 and X2 are .025 (.63) square

**Features:**

- Small size, high performance relays
- Vacuum dielectric for low leakage current applications
- RF ratings to 30 MHz
- SPST normally open contacts

www.DataSheet4U.com

**PRODUCT SPECIFICATIONS**

Part Number	Units	S03BJA335	S06CBA335
Contact Arrangement .....		SPST-NO	SPST-NO
Contact Form .....		A	A
Voltage Ratings .....	kV Peak		
Between Contacts .....		1.5	2
Contacts to Coil .....		1.5	2
Contacts to Screen .....		1.5	2
Coil to Screen .....		.5	.5
Carry Current , Maximum .....	Amps		
@ DC .....		3	6
@ 30 MHz .....		3	6
Contact Resistance .....	mohm	0.050	0.025
Contact Capacitance .....	pF		
Between Open Contacts .....		0.3	0.3
Closed Contacts to Ground .....		4	6
Operate Time [4] .....	ms	0.8	2
Release Time [4] .....	ms	0.5	0.5
Shock, 11 ms 1/2 Sine (Peak) .....	G's	100	100
Vibration .....	G's Peak	30	30
.....	Hz	10 to 2000	10 to 2000
Temperature Range .....	°C		
Operating .....		-20 to +70	-20 to +70
Storage .....		-35 to +110	-35 to +110
Initial Insulation Resistance .....	GigaOhms	10	10
Mechanical Life .....	Cycles	100 Million	100 Million
Weight, Nominal .....	oz.	0.24	0.24

**COIL DATA**

	S03BJA335	S06CBA335	Unit
<b>Volts, Nominal</b>	28	24	Vdc
Maximum Voltage	33	30	
Pickup, Maximum	19	16	
Dropout, Maximum	2	4	
<b>Coil Resistance</b>	2500	1000	Ohms
RF Screen, Inner	S1	S1	Pin #
RF Screen, Outer	N/A	N/A	
EM Shield	N/A	N/A	

4. Operate and release times are with external diode suppressions, @ 25°C.