

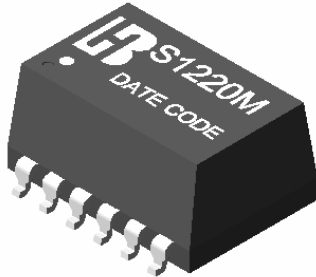


S1220M

T1/E1/CEPT/ISDN-PRI INTERFACE MODULES

P/N:S1220M DATA SHEET

Feature



- Optimized for enhanced EMC performance.
- Extended temperature range.
- Dual SMT package contains transformers with Common Mode Chokes on both transmit and receive channels.
- Models matched to leading transceiver ICS.
- Patented interlock Base construction for high reliability.
- Operating temperature range: -40°C to +85°C.
- Storage temperature range: -40 to +125 .

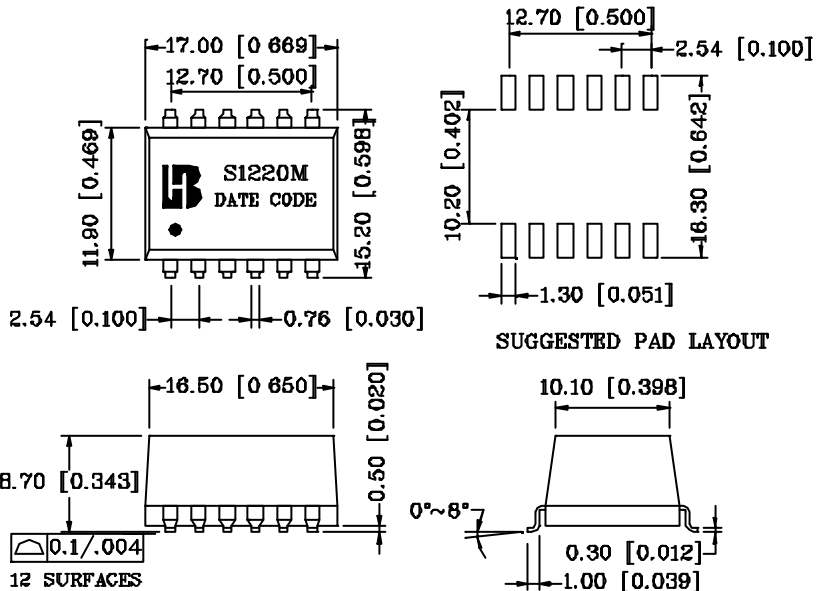
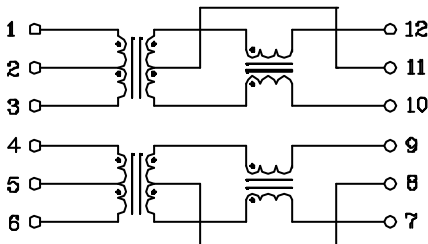
www.DataSheet4U.com

Electrical Specifications @ 25°C

Part Number	Turns Ratio Pri: Sec (±2%)	Secondary OCL (mH Min) @ 25	Cw/w (pF Max)	L.L (uH Max)	Pri DCR (Max)	Primary Pins	HI-POT (Vrms)
S1220M	1CT:1CT	1.20	35	0.60	0.90	(1-3)&(4-6)	1500

Schematic

Mechanical



Units: mm[Inches] Tolerances: xx.x0±0.25[0.010] 0.xx±0.05[0.002]