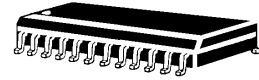


**S24-4148CC**  
And  
**S24-4150CC**  
*Switching Diode Array*



**FEATURES**

- 18 isolated lines, 6 common
- Standard 24 pin Surface Mount Package
- UL 94V-0 Flammability Classification

**MECHANICAL**

- Molded 24 Pin Array
- Weight: 2.5 grams (approximate)
- Marking: Logo, device number, date code
- Pin #1 defined by DOT on top of package
- 18 line, 6 common

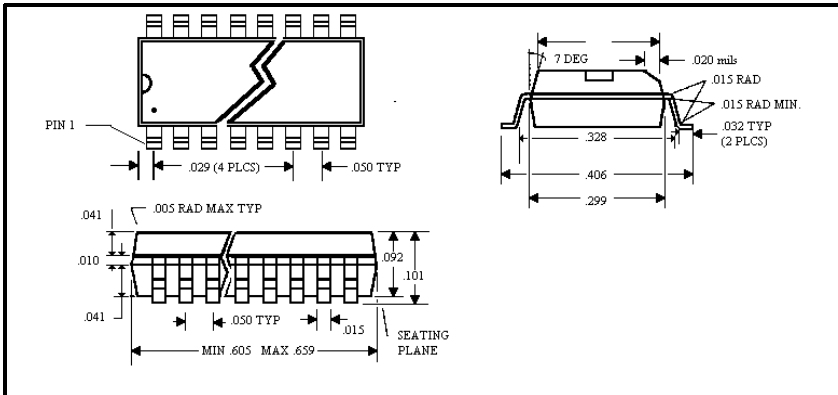
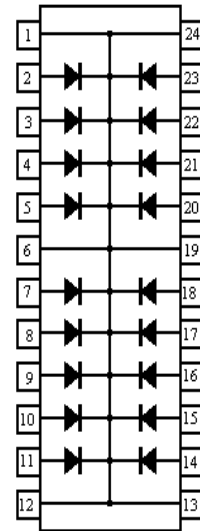
**MAXIMUM RATINGS**

- Operating Temperatures: -55<sup>o</sup>C to +150<sup>o</sup>C
- Storage Temperature: -55<sup>o</sup>C to +150<sup>o</sup>C
- Forward Surge Current: 2.0Amps (8.3 mSec)

**PACKAGING**

- Carrier tubes 25 per (standard)

**CIRCUIT DIAGRAM  
COMMON CATHODE**



**ELECTRICAL CHARACTERISTICS PER LINE**

Characteristics @ 25<sup>o</sup>C Unless otherwise specified

Part Number	V <sub>br</sub> @ I <sub>br</sub> = 100μA		I <sub>r</sub> +25°C		I <sub>r</sub> 150°C		CAP @ 0 V		t <sub>rr</sub>	
	V MIN	V MAX	μA MAX	V @ V <sub>r</sub>	μA MAX	V @ V <sub>r</sub>	pF MAX	(nS) MAX		
S24-4148CC	100		.025 .100	20 50	50 100	20 50	4.0		5.0	
S24-4150CC	75		.500	75	100	75	2.5		4.0	

Part Number	V <sub>f</sub> @ I <sub>f</sub> = 1.0mA		V <sub>f</sub> @ I <sub>f</sub> = 10mA		V <sub>f</sub> @ I <sub>f</sub> = 50mA		V <sub>f</sub> @ I <sub>f</sub> = 100mA		V <sub>f</sub> @ I <sub>f</sub> = 200mA	
	V MIN	V MAX	V MIN	V MAX	V MIN	V MAX	V MIN	V MAX	V MIN	V MAX
S24-4148CC	----	----	----	1.00	----	----	----	1.20	----	----
S24-4150CC	0.54	0.62	0.66	0.74	0.76	0.86	0.82	0.92	0.87	1.00