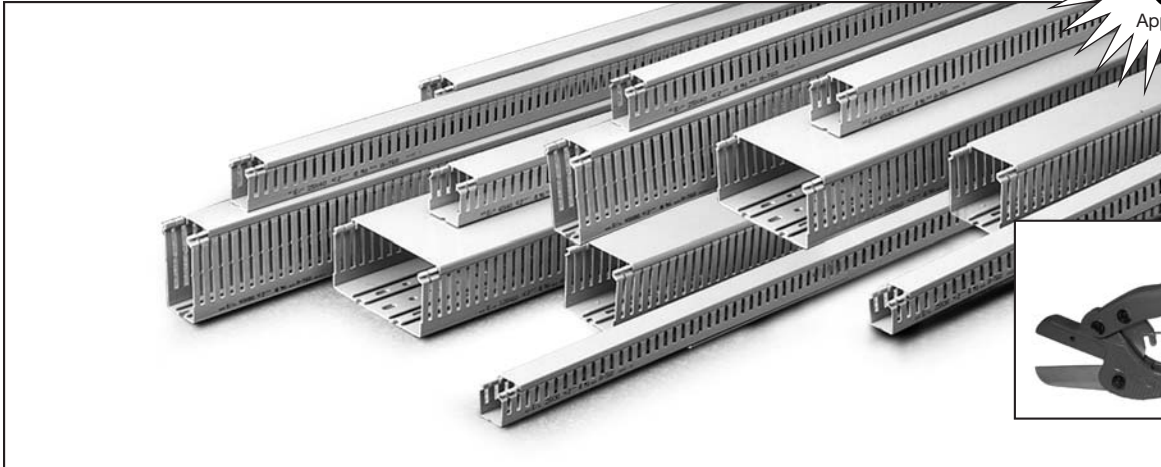


# EURO-DUCT - NARROW SLOT



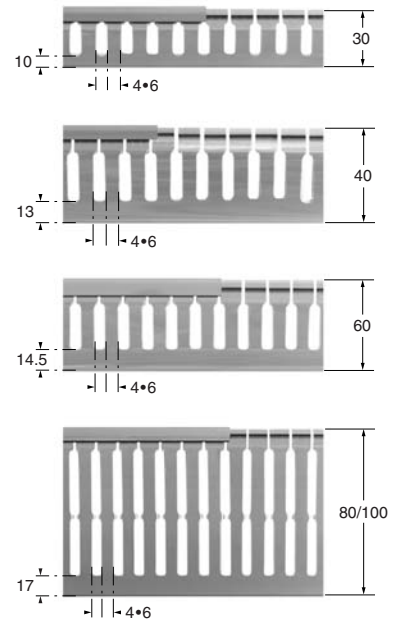
B



WT-1 Duct Cutting Tool

Each piece is 6' 6" (2m) long with the cover included. Available in grey and white.

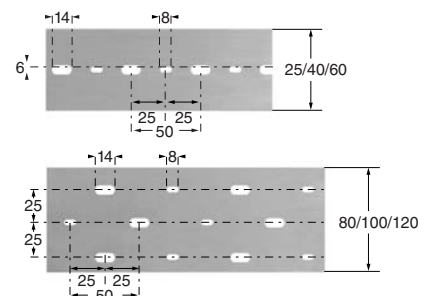
## Plate Dimensions (mm)



Grey Part #	White Part #	Nominal Size W x H (mm)	Approx. Size W x H (in)	PCS/CTN	Cable Separator
S2530C	S2530WHC	25 x 30	1" x 1.25"	40	NA
S2540C	S2540WHC	25 x 40	1" x 1.5"	30	NA
S2560C	S2560WHC	25 x 60	1" x 2.25"	20	NA
S2580C	S2580WHC	25 x 80	1" x 3"	16	NA
S25100C	S25100WHC	25 x 100	1" x 4"	12	NA
S4040C	S4040WHC	40 x 40	1.5" x 1.5"	20	NA
S4060C*	S4060WHC*	40 x 60	1.5" x 2.25"	18	S2
S4080C*	S4080WHC*	40 x 80	1.5" x 3"	12	S4
S40100C	S40100WHC	40 x 100	1.5" x 4"	8	NA
S6040C*	S6040WHC*	60 x 40	2.25" x 1.5"	12	S1/S3
S6060C*	S6060WHC*	60 x 60	2.25" x 2.25"	12	S2
S6080C*	S6080WHC*	60 x 80	2.25" x 3"	12	S4
S60100C	S60100WHC*	60 x 100	2.25" x 4"	8	NA
S8040C*	S8040WHC*	80 x 40	3" x 1.5"	12	S1/S3
S8060C*	S8060WHC*	80 x 60	3" x 2.25"	12	S2
S8080C*	S8080WHC*	80 x 80	3" x 3"	12	S4
S80100C*	S80100WHC*	80 x 100	3" x 4"	8	S5
S10060C*	S10060WHC*	100 x 60	4" x 2.25"	10	S2
S10080C*	S10080WHC*	100 x 80	4" x 3"	8	S4
S100100C*	S100100WHC*	100 x 100	4" x 4"	8	S5
S12060C*	S12060WHC*	120 x 60	5" x 2.25"	8	S2

\* for Cable Separator, See page 26

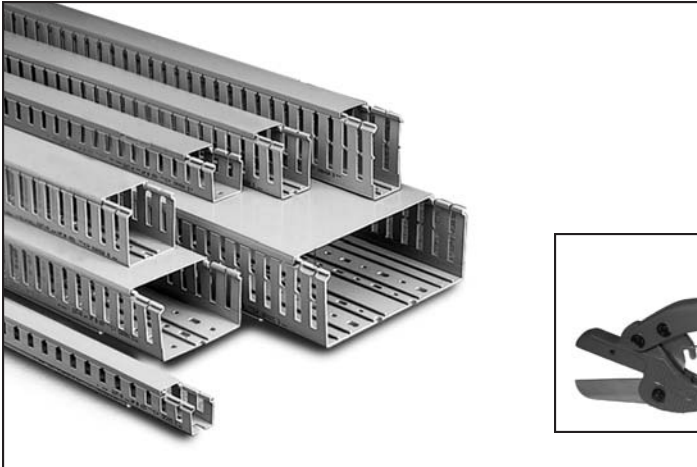
## Bottom Hole Dimensions (mm)



# AMERI-DUCT - WIDE SLOT



B



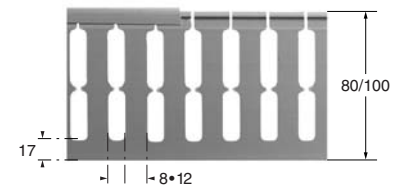
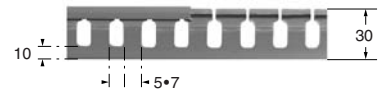
WT-1 Duct Cutting Tool

Each piece is 6' 6" (2m) long with the cover included. Available in grey only.

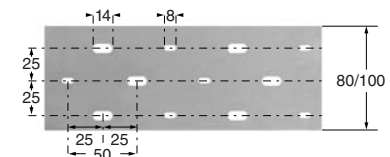
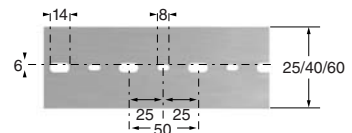
Grey Part #	Nominal Size W x H (mm)	Approx. Size W x H (in)	PCS/CTN	Cable Separator
A2530C	25 x 30	1" x 1.25"	40	NA
A2540C	25 x 40	1" x 1.5"	30	NA
A2560C	25 x 60	1" x 2.25"	20	NA
A2580C	25 x 80	1" x 3"	16	NA
A25100C	25 x 100	1" x 4"	12	NA
A4030C	40 x 30	1.5" x 1.25"	20	NA
A4040C	40 x 40	1.5" x 1.5"	18	NA
A4060C*	40 x 60	1.5" x 2.25"	12	S2
A4080C*	40 x 80	1.5" x 3"	8	S4
A40100C	40 x 100	1.5" x 4"	16	NA
A6030C*	60 x 30	2.25" x 1.25"	12	NA
A6040C*	60 x 40	2.25" x 1.5"	12	S1/S3
A6060C*	60 x 60	2.25" x 2.25"	12	S2
A6080C*	60 x 80	2.25" x 3"	8	S4
A60100C	60 x 100	2.25" x 4"	12	NA
A8040C*	80 x 40	3" x 1.5"	12	S1/S3
A8060C*	80 x 60	3" x 2.25"	12	S2
A8080C*	80 x 80	3" x 3"	8	S4
A80100C*	80 x 100	3" x 4"	8	S5
A10040C*	100 x 40	4" x 1.5"	8	S1/S3
A10060C*	100 x 60	4" x 2.25"	10	S2
A10080C*	100 x 80	4" x 3"	8	S4
A100100C*	100 x 100	4" x 4"	8	S5
A12060C*	120 x 60	5" x 2.25"	8	S2

\* for Cable Separator, See page 26

### Plate Dimensions (mm)



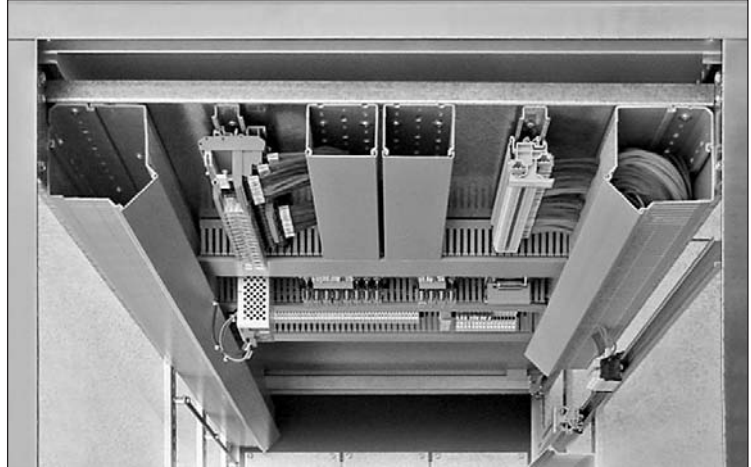
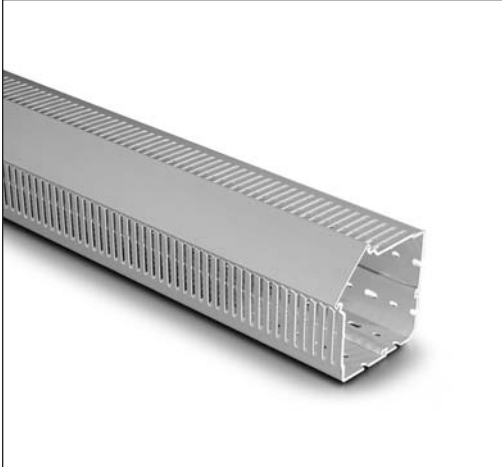
### Bottom Hole Dimensions (mm)



**NEW**

## CORNER EDGE DUCT - NARROW SLOT

B



Each piece is 6' 6" (2m) long. Available in grey only.

Part #	Nominal Size (mm)	Approx. Size (in)	PCS/Case
S1106080	110 x 60 x 80	4.25" x 2.25" x 3"	4

4 Sections /Pc. (1 base, 2 sides, 1 cover).

### Corner Duct - Panel Space Optimizer **NEW!!**

Techspan introduces a unique new product - Corner Duct. This product optimizes panel space by utilizing wasted corners in electrical panels. Previously, panel builders would have to install square duct on special spacers. This was time consuming, unattractive, and it wasted space.

#### Feature

- Corner duct is quick and easy to install.
- Every square inch of corner space is utilized. smaller panels, more room
- Precise and attractive in appearance. professional appearance

#### Benefit

- Saves labour
- no wasted space,
- provides cleaner look and

[www.TechSpan.com](http://www.TechSpan.com)

## ACCESSORIES

### Cable Separators

Part #	Height Size (mm)	PCS/Case
S1 (Double)	40	15
S2	60	25
S3	40	30
S4	80	16
S5	100	16

Note: For use with duct with bottom rails.

## ACCESSORIES (Continued)



### Cable Cross Arms (Black)

Part #	Width Size (mm)	PCS/PK
TR4	40	100
TR6	60	70
TR8	80	80
TR10	100/120	50



### Rivets

Part #	Size (Diameter) (mm)	Colour	PCS/PK
RIV1	6.5	Black	200
RIV2	4.5	White	200



### Rivet Tool

Part #	Size (Diameter) (mm)	U/M
PRRIV	6.5	1 (Complete Tool)
PRRIV2	4.5	1 (Tip Only)

When installing RIV2 rivets both PRRIV and PRRIV2 tools must be purchased.

[www.DataSentry.com](http://www.DataSentry.com)



### Cable Tie Holder (Nylon)

Part #	Colour	PCS/PK
DMF	Black	50

For use with duct contacting separator rails



### Label Holder

Part #	Colour	PCS/PK
PTE	Clear	50

2 labels / holder  
Twist to lock