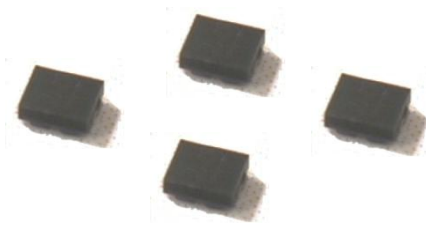




# Data Sheet of SAW Components



Note : Murata SAW Component is applicable for Cellular /Cordless phone (Terminal) relevant market only.

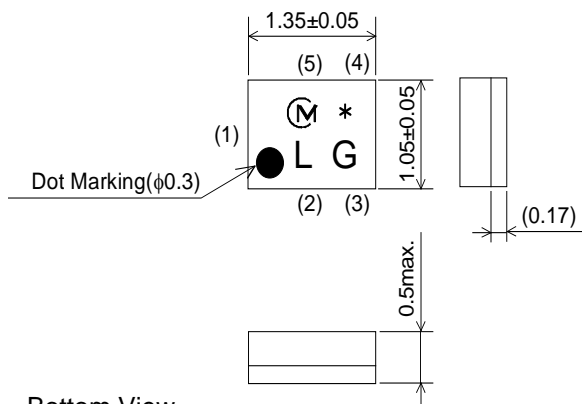
Please also read caution at the end of this document.

# SAW FILTER FOR GSM 1900 Rx

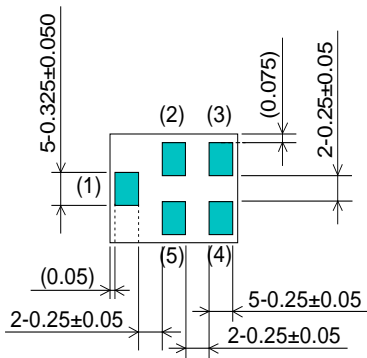
Murata part number : SAFEA1G96FA0F00

## Package Dimensions

Top View



Bottom View



Marking

: Laser Printing

(1) : Unbalance Port

(3)(4) : Balance Port

Others : Ground

Unit : mm

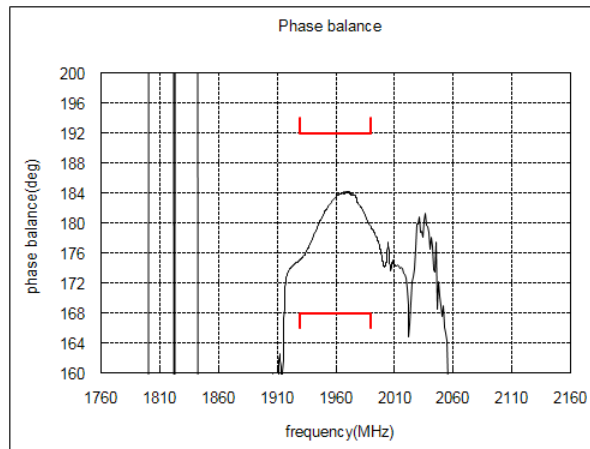
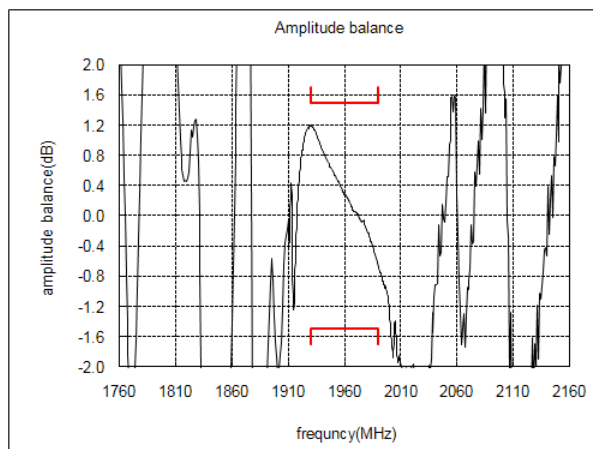
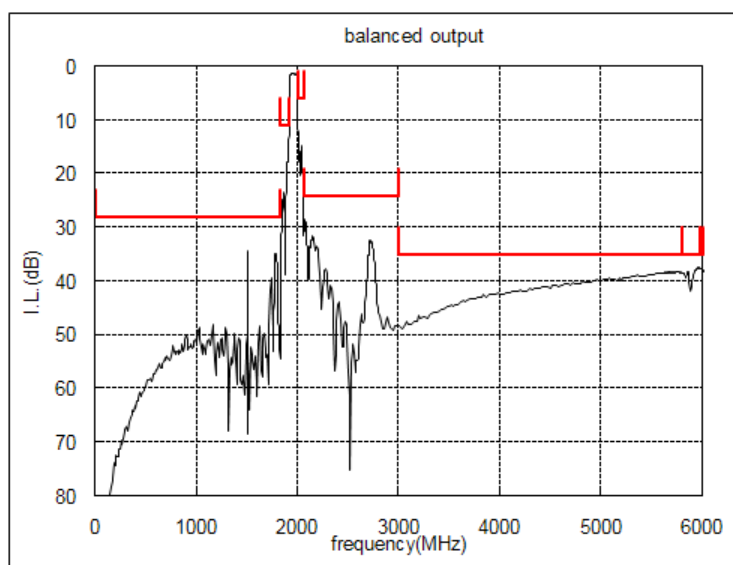
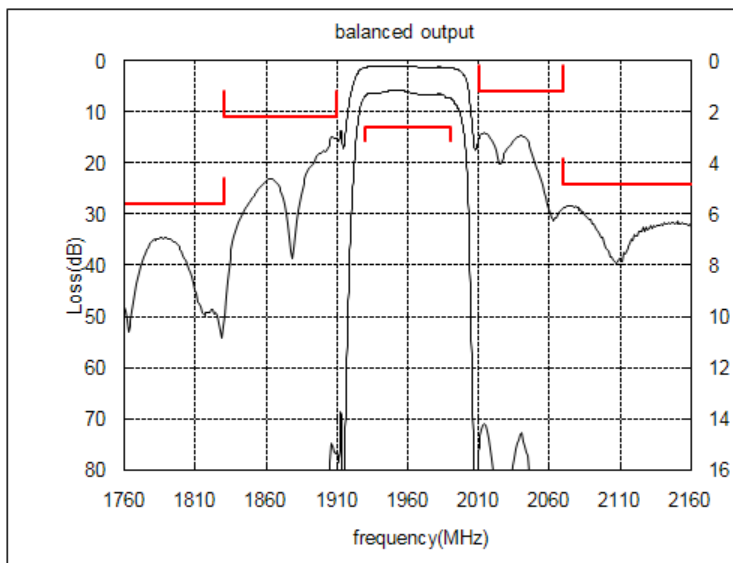
## Specification

Item	Specification		
	-30 to 85°C	25±2°C	typ.
Nominal Center Frequency(fc)	1960MHz		
Insertion Loss (1930 to 1990MHz)	2.6 dB max.	2.0 dB max.	1.5 dB
Absolute Attenuation			
1) 0.1 to 1830 MHz	28 dB min.	28 dB min.	33 dB
2) 1830 to 1910 MHz	11 dB min.	11 dB min.	15 dB
3) 2010 to 2070 MHz	6 dB min.	12 dB min.	14 dB
4) 2070 to 3000 MHz	24 dB min.	24 dB min.	27 dB
5) 3000 to 5790 MHz	35 dB min.	35 dB min.	46 dB
6) 5790 to 5970 MHz	35 dB min.	35 dB min.	40 dB
7) 5970 to 6000 MHz	35 dB min.	35 dB min.	44 dB
Ripple Deviation (1930 to 1990MHz)	1.7 dB max.	0.9 dB max.	0.3 dB
VSWR (1930 to 1990MHz)	2.2 max.	1.8 max.	1.6
Amplitude Balance (1930 to 1990MHz)	±1.5dB max.	±1.5dB max.	±1.2dB
Phase Balance (1930 to 1990MHz)	180±12deg. max.	180±9deg. max.	180±5deg.
Unbalance Port Matching Impedance (nominal)	50Ω		
Balance Port Matching Impedance (nominal)	150Ω//27nH		
Input Signal Level	20mW (+13dBm), 2000 hours		

# SAW FILTER FOR GSM 1900 Rx

Murata part number : SAFEA1G96FA0F00

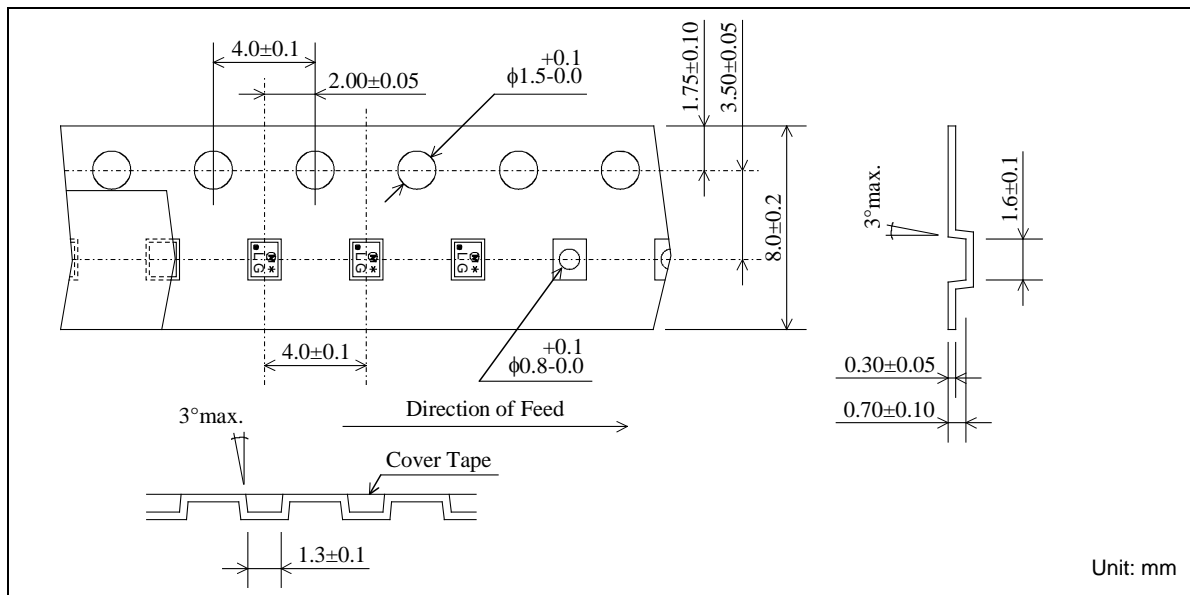
## Frequency Performance



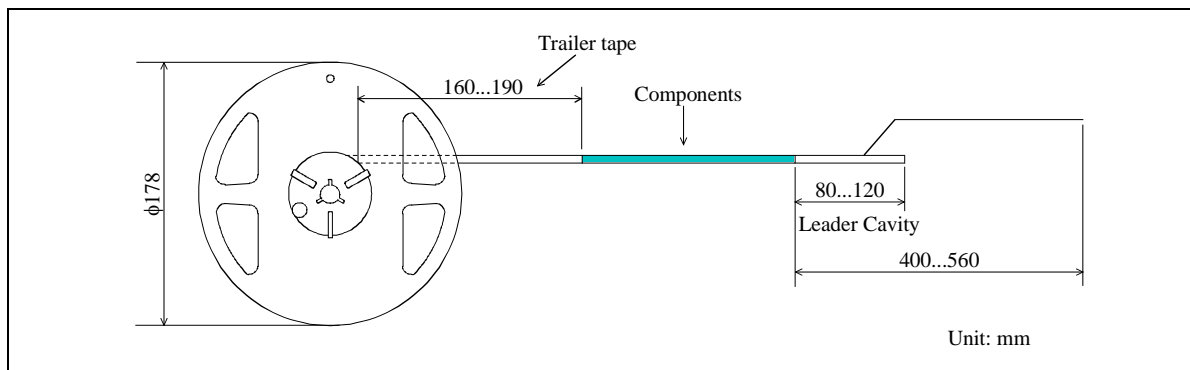
# SAW FILTER FOR GSM 1900 Rx

Murata part number : SAFEA1G96FA0F00

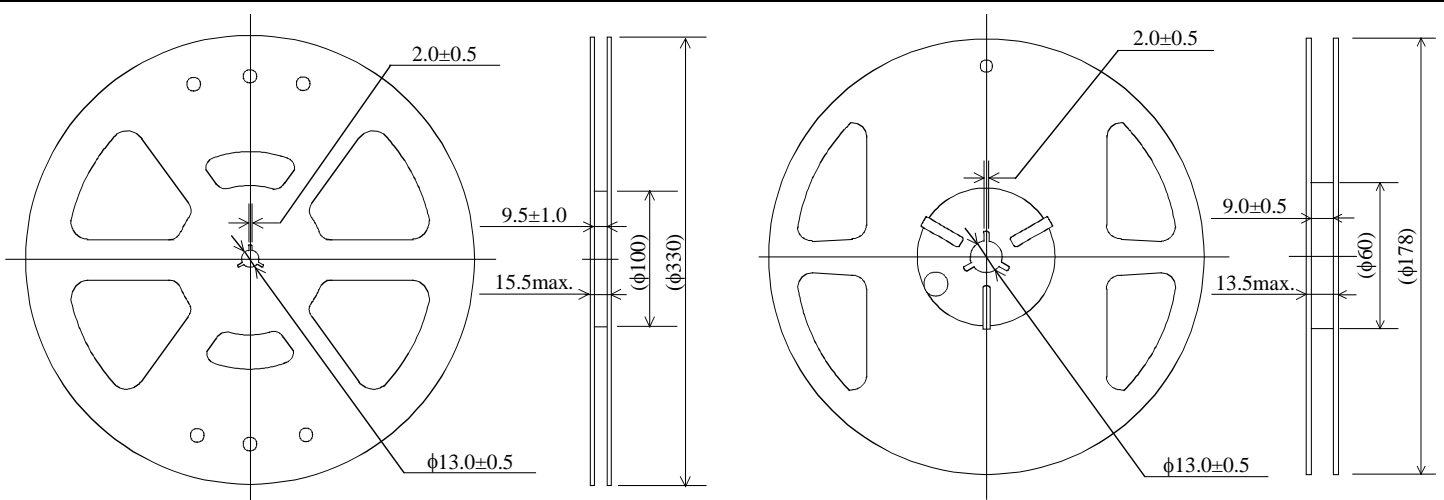
## Dimensions of Carrier Tape



## Dimensions of Tape



## Dimensions of Reel



SAFEA1G96FA0F00R00 ... 10000pcs/reel

SAFEA1G96FA0F00R15 ... 5000pcs/reel

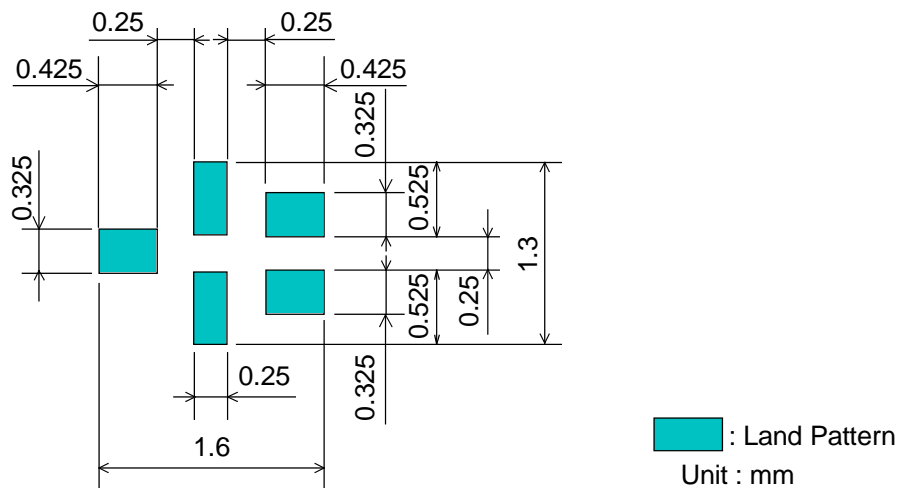
Unit: mm

# SAW FILTER FOR GSM 1900 Rx

Murata part number : SAFEA1G96FA0F00

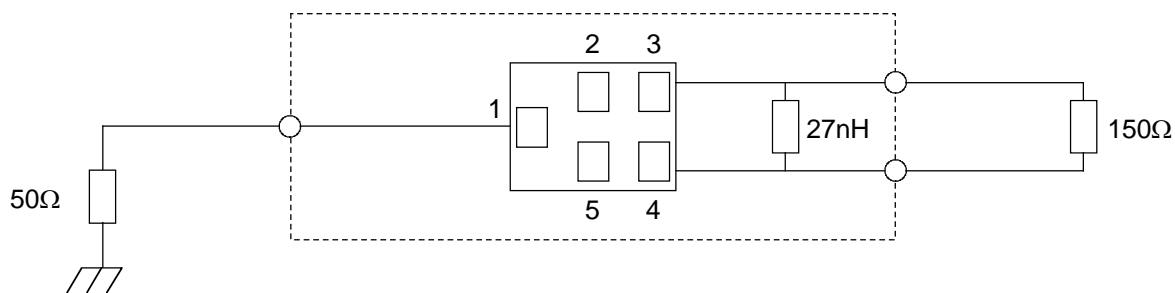
## Recommended Land Pattern

Top View



## Test Circuit

Bottom View



# SAW FILTER FOR GSM 1900 Rx

Murata part number : SAFEA1G96FA0F00

## ■ RoHS Compliance

This component is compliant with RoHS directive.

This component was always RoHS compliant from the first date of manufacture.

### • Caution - Limitation of Applications

This product is intended for the following applications only; however, please do not use this product in these applications where defects might directly cause damage to a third party's life, body or property.

- a. Mobile Telephone
- b. Cordless phone (except for Automotive use)
- c. PC (Including Notebook PC, Netbook PC, Tablet)
- d. Game
- e. Camera (except for Business/security use)
- f. Set Top Box
- g. Electronic dictionary
- h. Digital audio equipment

• This catalog is for reference only and not an official product specification document, therefore, please review and approve our official product specification before ordering this product.