

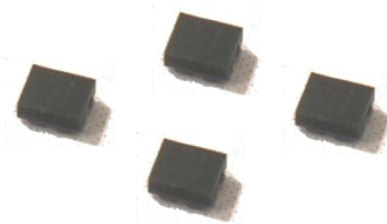
# Datasheet of SAW Device

## SAW Single Filter

for Band38 / Unbalanced / 5pin /1411

Murata PN: SAFEA2G59MA0F00

- Feature
  - TX Filter



Note : Murata SAW Component is applicable for Cellular /Cordless phone (Terminal) relevant market only.  
Please also read caution at the end of this document.

## SAFEA2G59MA0F00 ( Band38 / Unbalanced / 5pin / 1411 )

Revision No.	Date	Description
SAFEA2G59MA0F00_rev. A	May-16-2011	■ Initial Release / MP
SAFEA2G59MA0F00_rev. B	Oct-31-2014	■ Updated General Information

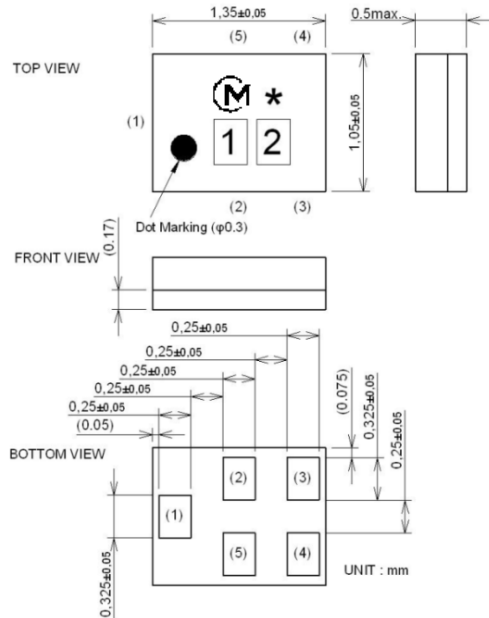
- Operating temperature : -30 to +85 deg.C
- Storage temperature : -40 to +85 deg.C
- Input Power : +28.5dBm, 55deg.C, 5000hrs  
                   +28.0dBm, 55deg.C, 20000hrs  
                   (\*)Input signal shall be applied to Terminal number(1).
- D.C. Volatage between the terminals : 3V (25+/-2 deg.C)
- Minimum Resistance between the terminal : 10M ohm
- RoHS compliance : Yes

SAFEA2G59MA0F00 ( Band38 / Unbalanced / 5pin / 1411 )

Package Dimensions & Recommended Land Pattern

unit: mm

Dimensions



Marking : Laser Printing

Ⓜ : Manufacturer symbol

\* : EIAJ Code(Refer to the table in the last page)

1 : C

2 : R

Terminal Number

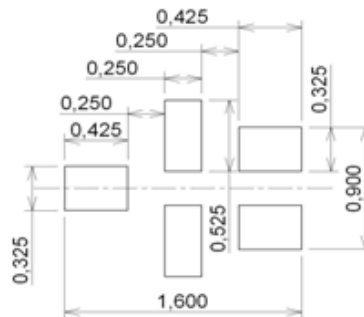
(1) : Unbalanced port (PA-side)

(4) : Unbalanced port(Ant.-side)

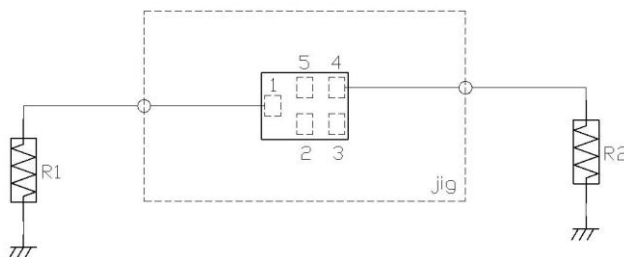
Others : GND

Notice) Please refer to Measurement Circuit for Port information in detail.

Land Pattern



Measurement Circuit (Top Thru View)



R1 : 50 ohm	
R2 : 50 ohm	

SAFEA2G59MA0F00 (Band38 / Unbalanced / 5pin / 1411)

Electrical Characteristic < Single Filter >

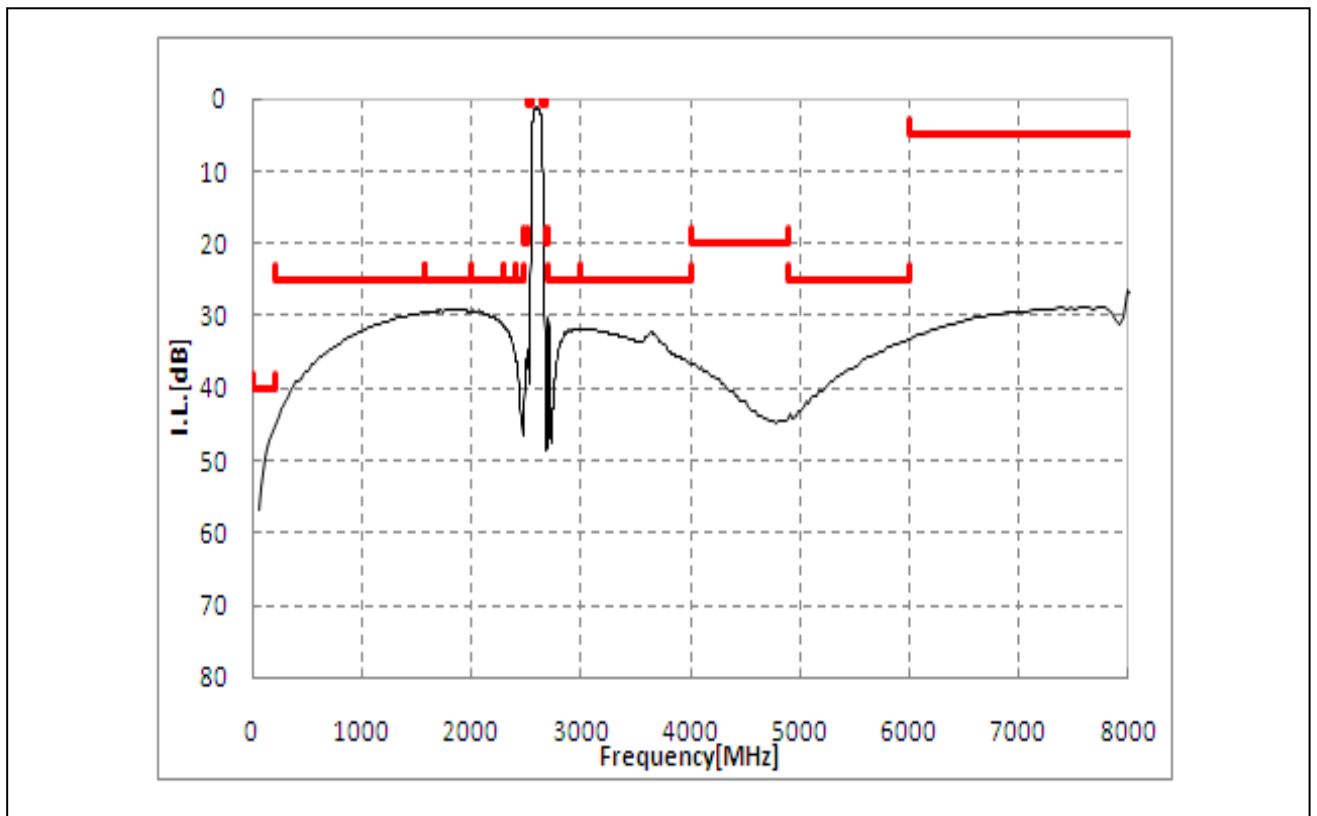
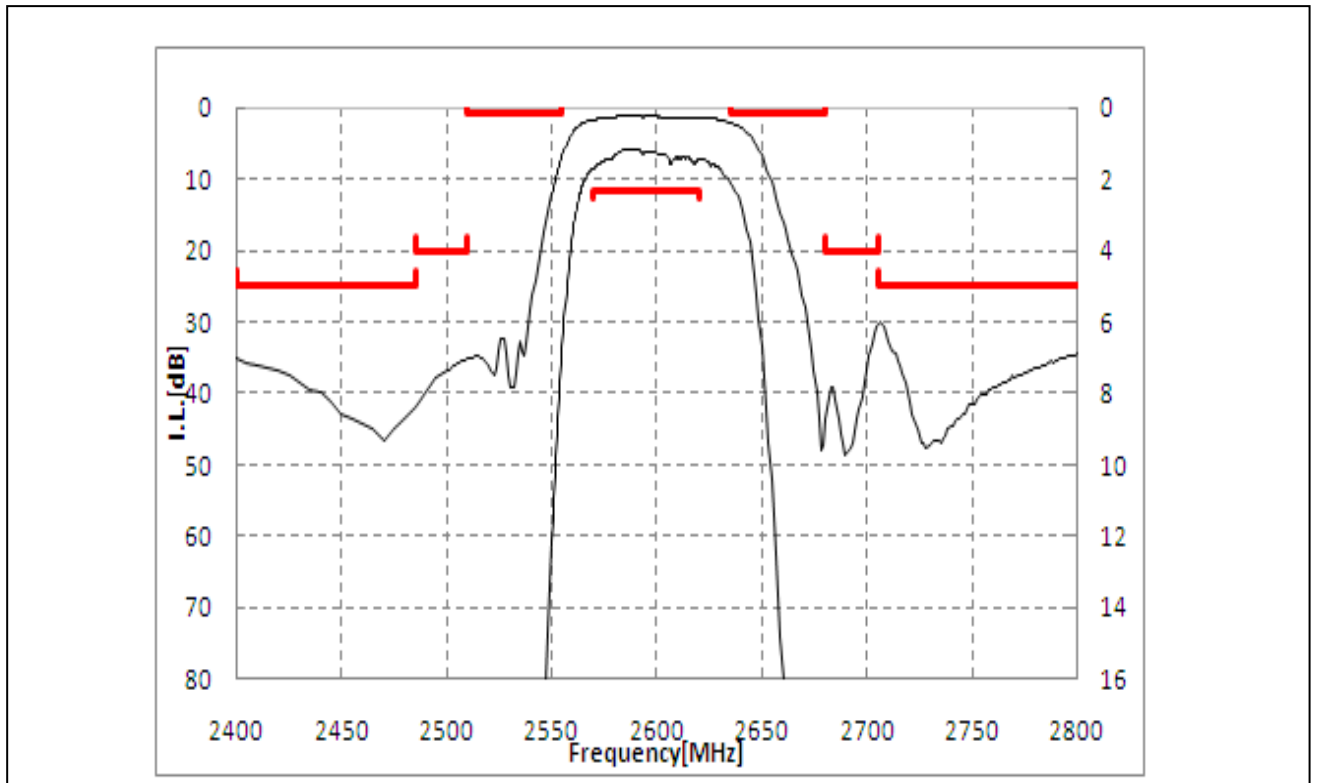
Item	Characteristics					Unit	Note		
	(-30 to +85 deg.C)								
	min.	typ.	max.						
Center Frequency					2595				
Insertion Loss	2570.	to	2620.	MHz	1.5	2.3	dB		
	2570.	to	2620.	MHz	1.5	1.8		+23 to +27deg.C	
Ripple Deviation	2570.	to	2620.	MHz	0.5	1.7	dB		
	2570.	to	2620.	MHz	0.5	1.0		+23 to +27deg.C	
VSWR	2570.	to	2620.	MHz	1.4	2.0			
Absolute Attenuation	1.	to	200.	MHz	40	45	dB		
	200.	to	1570.	MHz	25	29			
	1570.	to	1580.	MHz	25	29			
	1580.	to	2000.	MHz	25	29			
	2000.	to	2300.	MHz	25	29			
	2300.	to	2400.	MHz	25	31			
	2400.	to	2485.	MHz	25	34			
	2485.	to	2510.	MHz	20	35			
	2510.	to	2555.	MHz	0.8	6.7			
	2510.	to	2555.	MHz	1.2	6.7		+23 to +27deg.C	
	2635.	to	2680.	MHz	1.8	1.7		dB	
	2635.	to	2680.	MHz	1.0	1.7			+23 to +27deg.C
	2680.	to	2705.	MHz	20	30		dB	
	2705.	to	3000.	MHz	25	30			
	3000.	to	4000.	MHz	25	31		dB	
	4000.	to	4900.	MHz	20	35			
	4900.	to	6000.	MHz	25	35		dB	
	6000.	to	12500.	MHz	5.0	12			

\* Typical value at 25±2deg.C

SAFEA2G59MA0F00 ( Band38 / Unbalanced / 5pin / 1411 )

Electrical Characteristic

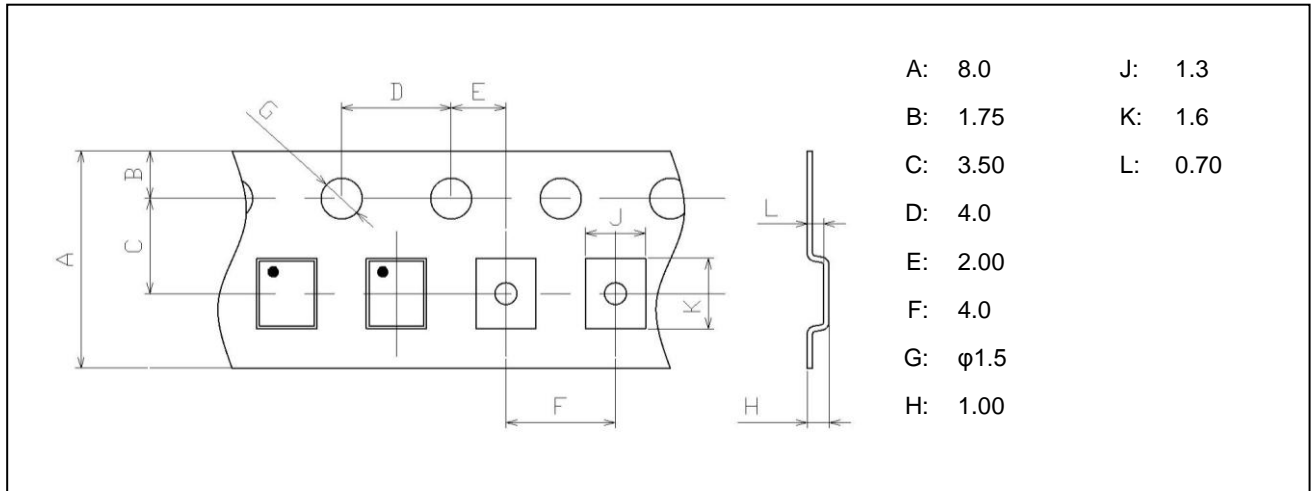
< Single Filter >



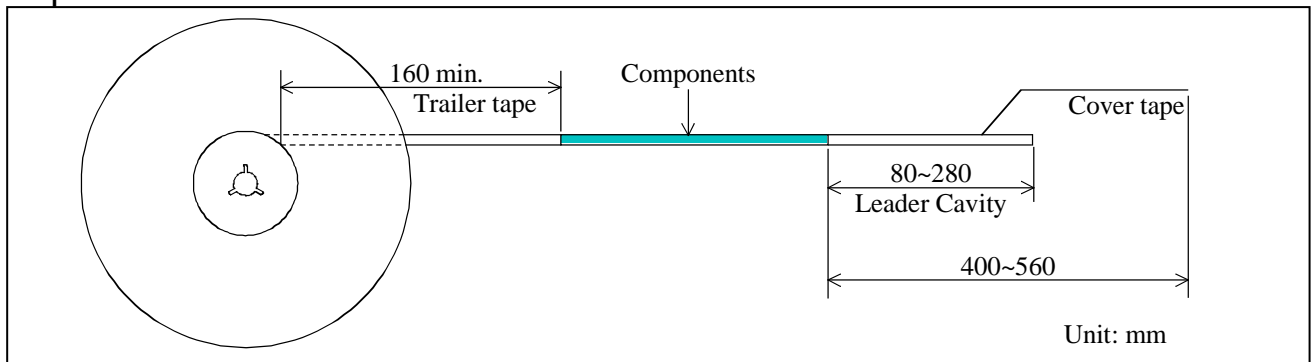
**SAFEA2G59MA0F00 ( Band38 / Unbalanced / 5pin / 1411 )**

**Dimensions of Tape & Reel** unit: mm

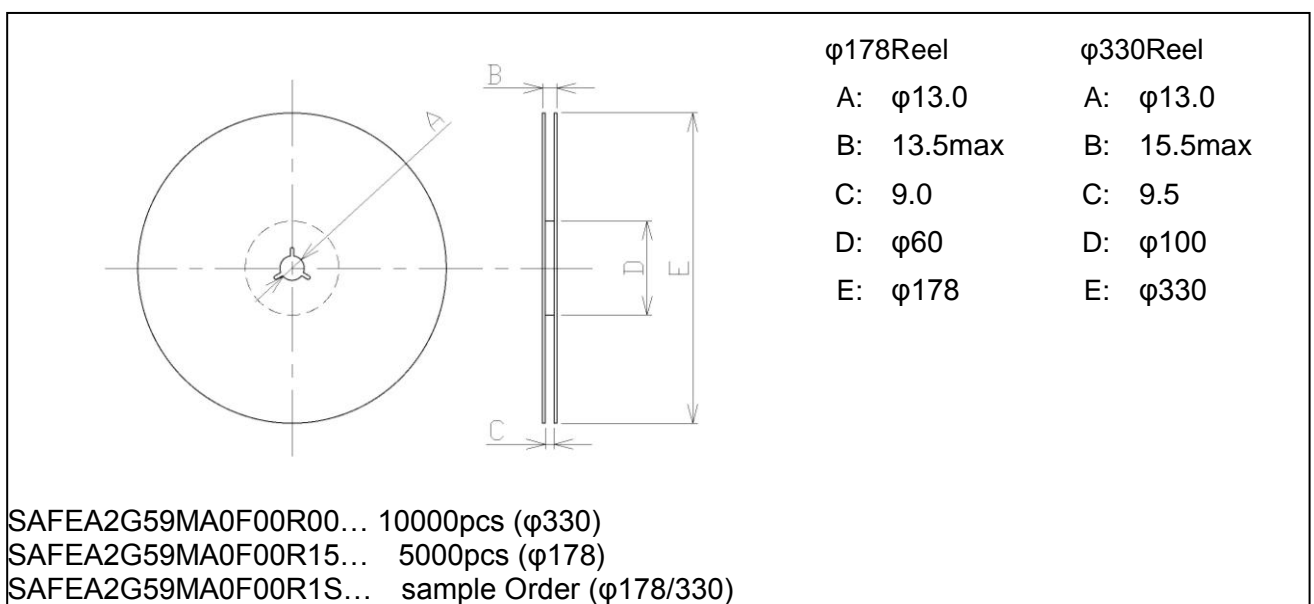
**Carrier Tape**



**Tape**



**Reel**



## Marking Code

\* : EIAJ Code

This rule of code is applied repeatedly every four years.

2009	Jan.	Feb.	Mar.	Apr.	May	Jun.	Jul.	Aug.	Sep.	Oct.	Nov.	Dec.
2013	A	B	C	D	E	F	G	H	J	K	L	M
2017												
2010	Jan.	Feb.	Mar.	Apr.	May	Jun.	Jul.	Aug.	Sep.	Oct.	Nov.	Dec.
2014	N	P	Q	R	S	T	U	V	W	X	Y	Z
2018												
2011	Jan.	Feb.	Mar.	Apr.	May	Jun.	Jul.	Aug.	Sep.	Oct.	Nov.	Dec.
2015	a	b	c̄	d	e	f	g	h	j	k	l	m
2019												
2012	Jan.	Feb.	Mar.	Apr.	May	Jun.	Jul.	Aug.	Sep.	Oct.	Nov.	Dec.
2016	n	p	q	r	s	t	u	v	w	x	y	z
2020												

## Important Notice (1/2)

PLEASE READ THIS NOTICE BEFORE USING OUR PRODUCTS.

Please make sure that your product has been evaluated and confirmed from the aspect of the fitness for the specifications of our product when our product is mounted to your product. All the items and parameters in this product specification/datasheet/catalog have been prescribed on the premise that our product is used for the purpose, under the condition and in the environment specified in this specification. You are requested not to use our product deviating from the condition and the environment specified in this specification.

Please note that the only warranty that we provide regarding the products is its conformance to the specifications provided herein. Accordingly, we shall not be responsible for any defects in products or equipment incorporating such products, which are caused under the conditions other than those specified in this specification.

WE HEREBY DISCLAIMS ALL OTHER WARRANTIES REGARDING THE PRODUCTS, EXPRESS OR IMPLIED, INCLUDING WITHOUT LIMITATION ANY WARRANTY OF FITNESS FOR A PARTICULAR PURPOSE, THAT THEY ARE DEFECT-FREE, OR AGAINST INFRINGEMENT OF INTELLECTUAL PROPERTY RIGHTS.

The product shall not be used in any application listed below which requires especially high reliability for the prevention of such defect as may directly cause damage to the third party's life, body or property. You acknowledge and agree that, if you use our products in such applications, we will not be responsible for any failure to meet such requirements.

## Important Notice (2/2)

Furthermore, YOU AGREE TO INDEMNIFY AND DEFEND US AND OUR AFFILIATES AGAINST ALL CLAIMS, DAMAGES, COSTS, AND EXPENSES THAT MAY BE INCURRED, INCLUDING WITHOUT LIMITATION, ATTORNEY FEES AND COSTS, DUE TO THE USE OF OUR PRODUCTS IN SUCH APPLICATIONS.

- Aircraft equipment.
- Aerospace equipment
- Undersea equipment.
- Power plant control equipment      - Medical equipment.
- Transportation equipment (vehicles, trains, ships, elevator, etc.).
- Traffic signal equipment.
- Disaster prevention / crime prevention equipment.
- Burning / explosion control equipment
- Application of similar complexity and/ or reliability requirements to the applications listed in the above.

We expressly prohibit you from analyzing, breaking, Reverse-Engineering, remodeling altering, and reproducing our product. Our product cannot be used for the product which is prohibited from being manufactured, used, and sold by the regulations and laws in the world.

We do not warrant or represent that any license, either express or implied, is granted under any our patent right, copyright, mask work right, or our other intellectual property right relating to any combination, machine, or process in which our products or services are used. Information provided by us regarding third-party products or services does not constitute a license from us to use such products or services or a warranty or endorsement thereof. Use of such information may require a license from a third party under the patents or other intellectual property of the third party, or a license from us under our patents or other intellectual property.

Please do not use our products, our technical information and other data provided by us for the purpose of developing of mass-destruction weapons and the purpose of military use. Moreover, you must comply with "foreign exchange and foreign trade law", the "U.S. export administration regulations", etc.

Please note that we may discontinue the manufacture of our products, due to reasons such as end of supply of materials and/or components from our suppliers.

Customer acknowledges that Murata will, if requested by you, conduct a failure analysis for defect or alleged defect of Products only at the level required for consumer grade Products, and thus such analysis may not always be available or be in accordance with your request (for example, in cases where the defect was caused by components in Products supplied to Murata from a third party).

The product shall not be used in any other application/model than that of claimed to Murata.

Customer acknowledges that engineering samples may deviate from specifications and may contain defects due to their development status.

We reject any liability or product warranty for engineering samples.

In particular we disclaim liability for damages caused by

- the use of the engineering sample other than for evaluation purposes, particularly the installation or integration in the product to be sold by you,
- deviation or lapse in function of engineering sample,
- improper use of engineering samples.

We disclaim any liability for consequential and incidental damages.

If you can't agree the above contents, you should inquire our sales.