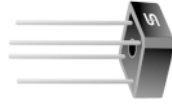




SB6, SBT6 SERIES

Single Phase 6.0 AMPS. Silicon Bridge Rectifiers



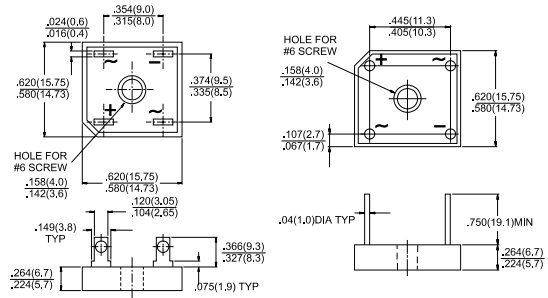
Voltage Range
50 to 1000 Volts
Current
6.0 Amperes

Features

- ✧ UL Recognized File # E-96005
- ✧ Surge overload rating 200 amperes peak
- ✧ Low forward voltage drop
- ✧ High temperature soldering guaranteed:
250°C / 10 seconds / 0.375" (9.5mm)
lead length at 5 lbs., (2.3 kg) tension
- ✧ Small size, simple installation
- ✧ Leads solderable per MIL-STD-202
Method 208

SBT-6

SB-6



Dimensions in inches and (millimeters)

Maximum Ratings and Electrical Characteristics

Rating at 25°C ambient temperature unless otherwise specified.
Single phase, half wave, 60 Hz, resistive or inductive load.
For capacitive load, derate current by 20%

| Type Number | SB601 | SB602 | SB603 | SB604 | SB605 | SB606 | SB607 | Units |
|--|-------------|--------|--------|--------|--------|--------|--------|----------|
| | SBT601 | SBT602 | SBT603 | SBT604 | SBT605 | SBT606 | SBT607 | |
| Maximum Recurrent Peak Reverse Voltage | 50 | 100 | 200 | 400 | 600 | 800 | 1000 | V |
| Maximum RMS Voltage | 35 | 70 | 140 | 280 | 420 | 560 | 700 | V |
| Maximum DC Blocking Voltage | 50 | 100 | 200 | 400 | 600 | 800 | 1000 | V |
| Maximum Average Forward Rectified Current @ T _A = 50°C | 6.0 | | | | | | | A |
| Peak Forward Surge Current, 8.3 ms Single Half Sine-wave Superimposed on Rated Load (JEDEC method) | 200 | | | | | | | A |
| Maximum Instantaneous Forward Voltage @ 3.0A | 1.0 | | | | | | | V |
| Maximum DC Reverse Current @ T _A =25°C at Rated DC Blocking Voltage @ T _A =100°C | 10 500 | | | | | | | µA µA |
| Typical Thermal resistance (Note 1) R _{θJA} (Note 2) R _{θJC} | 22 7.3 | | | | | | | °C/W |
| Operating Temperature Range T _J | -55 to +125 | | | | | | | °C |
| Storage Temperature Range T _{STG} | -55 to +150 | | | | | | | °C |

- Note: 1. Unit Mounted on P.C.B. at 0.375" (9.5mm) Lead Length with 0.5 x 0.5" (12 x 12mm) Copper Pads.
2. Unit Mounted on 5.5 x 6. x 0.11" thick (14 x 15 x 0.3cm) Al. Plate.

RATINGS AND CHARACTERISTIC CURVES (SB_{SBT} 601 THRU SB_{SBT} 607)

FIG.1- MAXIMUM NON-REPETITIVE FORWARD SURGE CURRENT PER BRIDGE ELEMENT

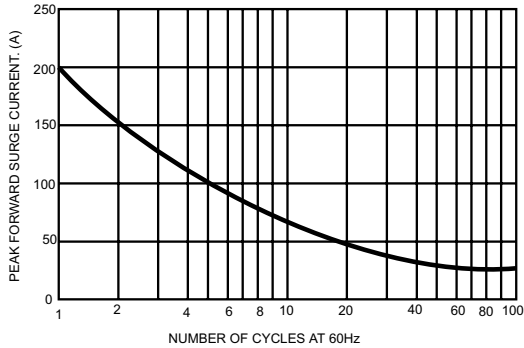


FIG.2- MAXIMUM FORWARD CURRENT DERATING CURVE

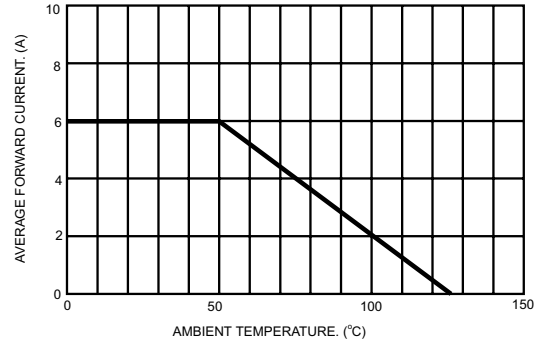


FIG.3- TYPICAL INSTANTANEOUS FORWARD CHARACTERISTICS PER BRIDGE ELEMENT

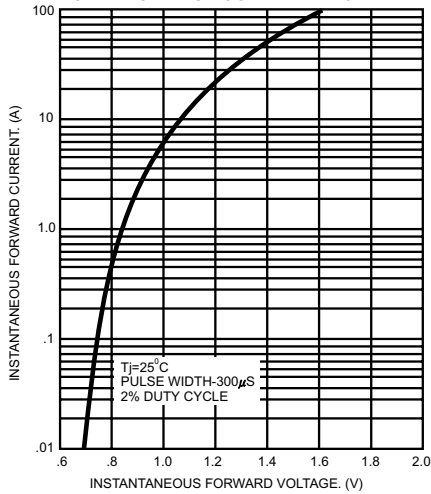


FIG.4- TYPICAL REVERSE CHARACTERISTICS PER BRIDGE ELEMENT

