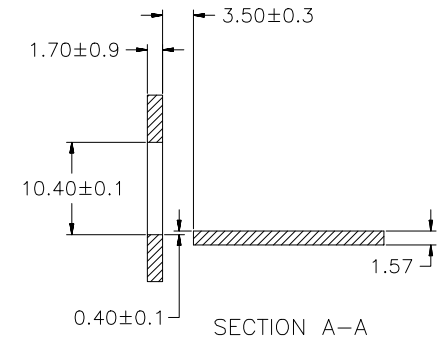
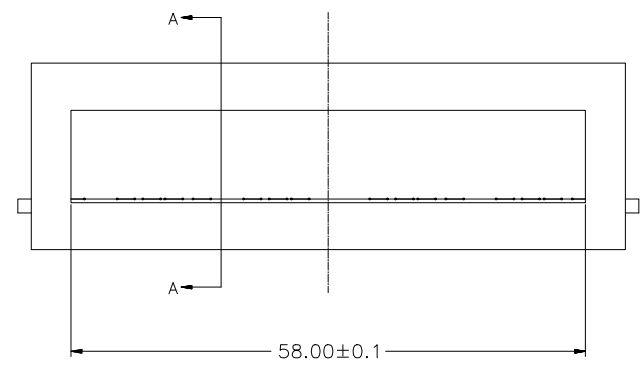
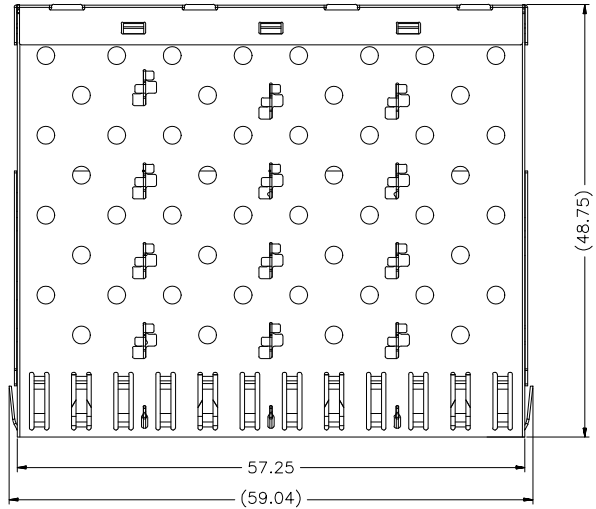
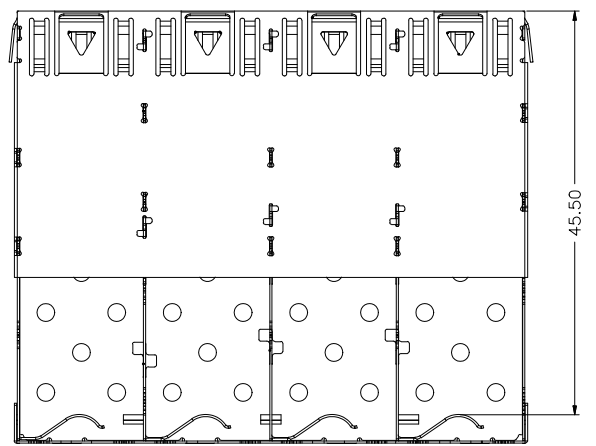
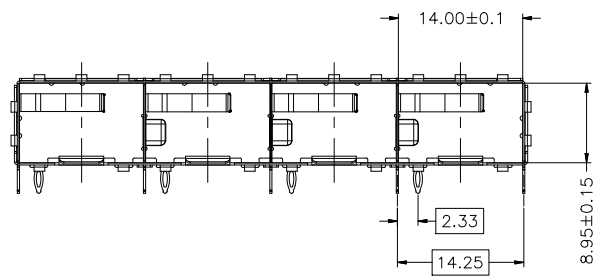
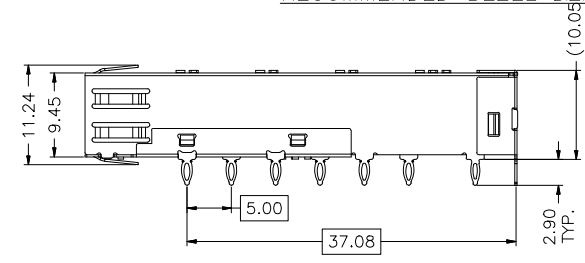


REV.	ECN. NO.	NAME	DATE




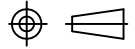
RECOMMENDED BEZEL DESIGN



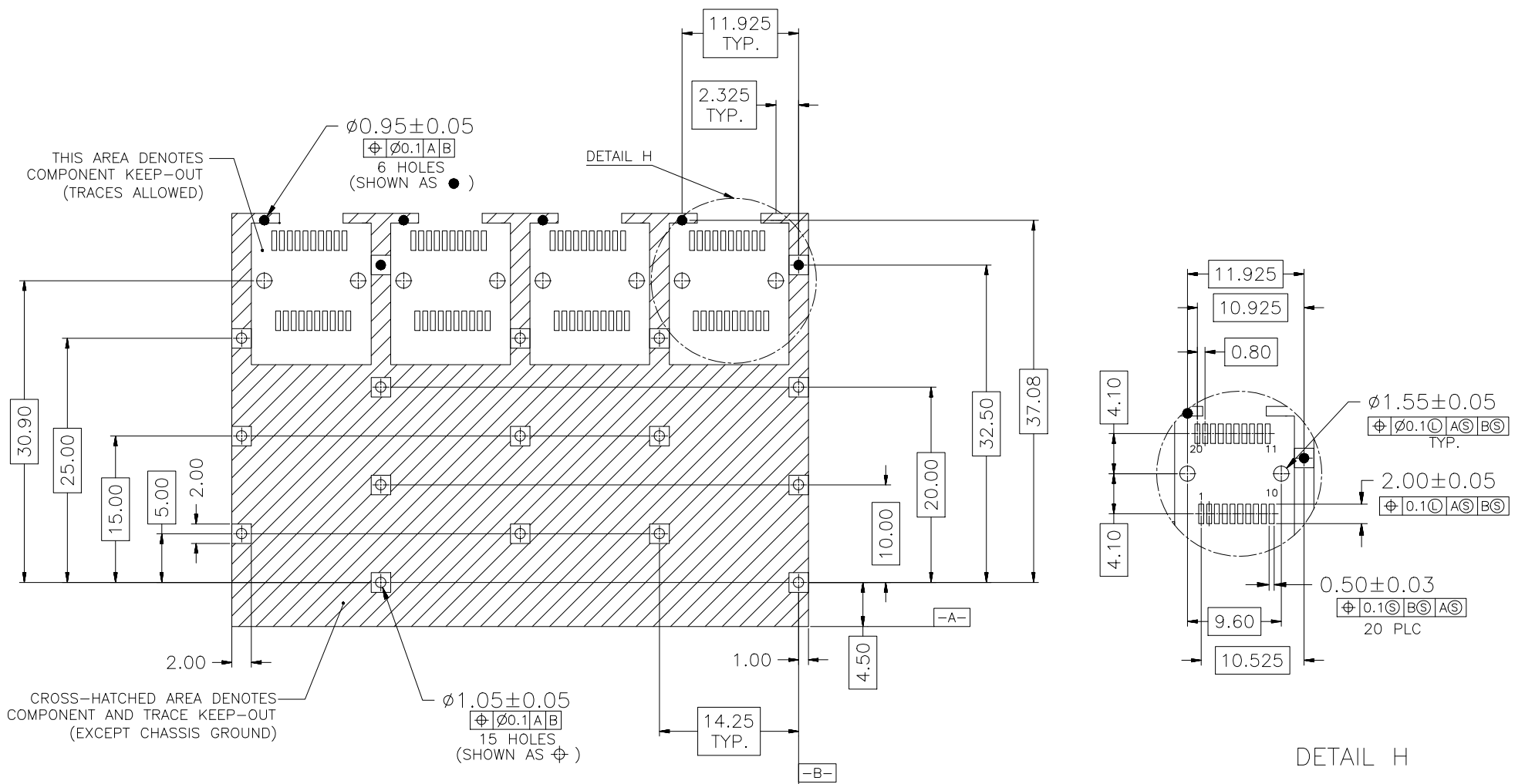
NOTES:

- 1.MATERIAL: NICKEL SILVER, THICKNESS 0.25mm
- 2.PACKAGING: TRAY PACKAGING
- 3.TEMPERATURE RANGE: -55°C TO +85°C

RoHS Compliant

TOLERANCE UNSPECIFIED		 a vital connector company		FOR YOUR VITAL CONNECTION	
.0	± 0.38			TITLE: SFP1*4 CAGE	
.00	± 0.25	DRAWN BY: BECKER	PART NO: SC14A	REV: A	
.000	± 0.10	CHECKED BY: VTA	SIZE: A4	UNIT:mm	SHEET:10F2 FCN: A4
ANGLE	± 3.00°	APPROVED BY: QPF	PROJECTION	 http://www.vitalconn.com	
MANUFACTURING COPY					

REV.	ECN. NO.	NAME	DATE



RoHS Compliant

TOLERANCE UNSPECIFIED		 VITALCON a vital connector company		FOR YOUR VITAL CONNECTION	
.0	± 0.38			TITLE: SFP1*4 CAGE	
.00	± 0.25	DRAWN BY: BECKER	PART NO: SC14A	REV: A	
.000	± 0.10	CHECKED BY: VTA	SIZE: A4	UNIT:mm	SHEET:20F2 FCN: A4
ANGLE	± 3.00°	APPROVED BY: QPF	PROJECTION		http://www.vitalconn.com
MANUFACTURING COPY					