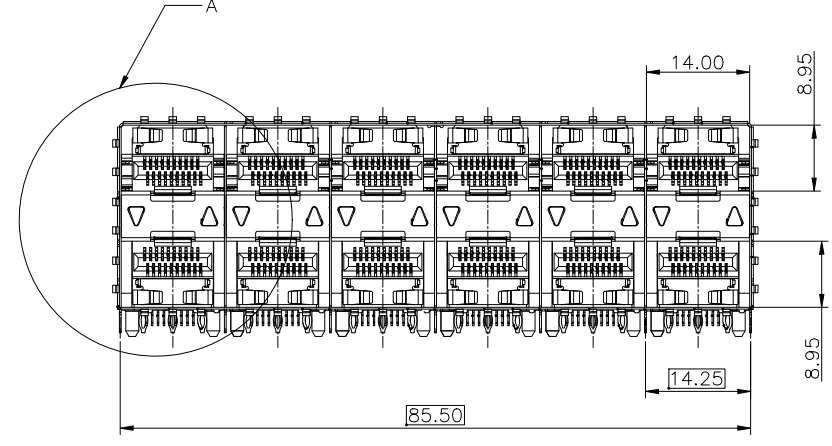
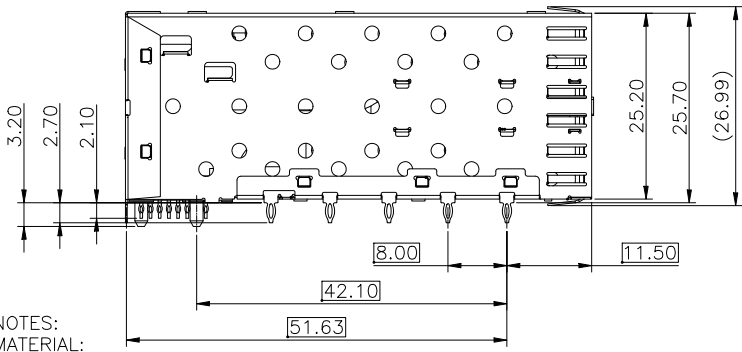
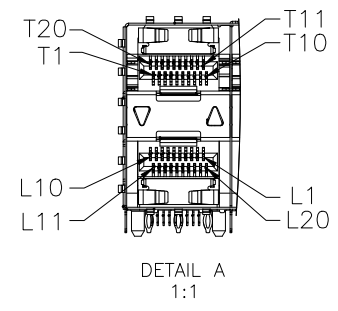
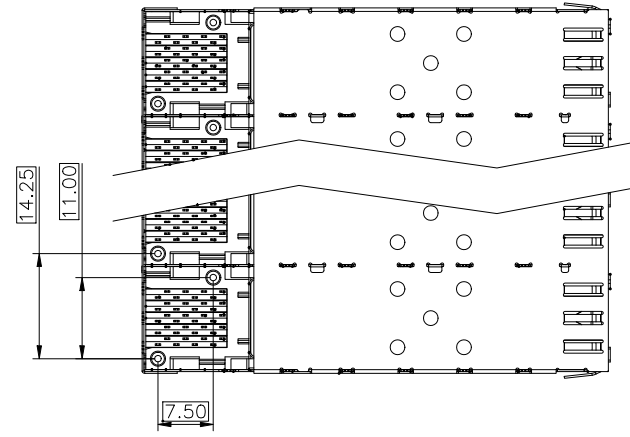
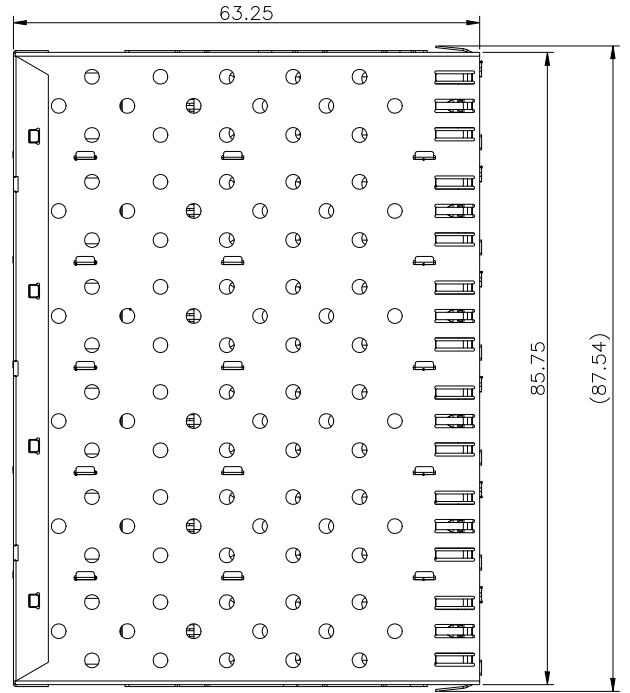

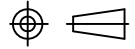


REV.	ECN. NO.	NAME	DATE

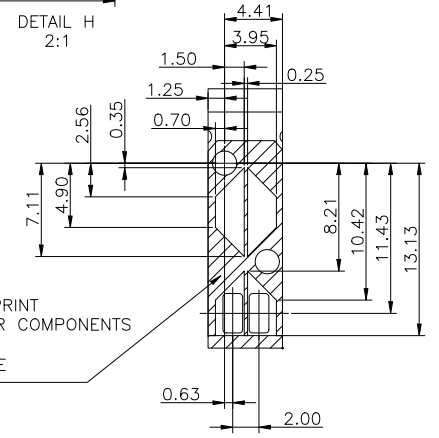
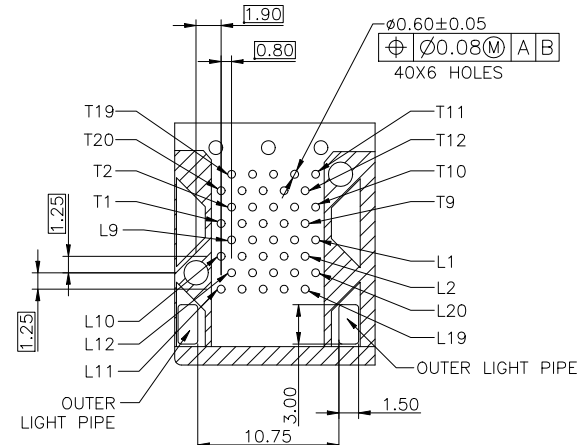
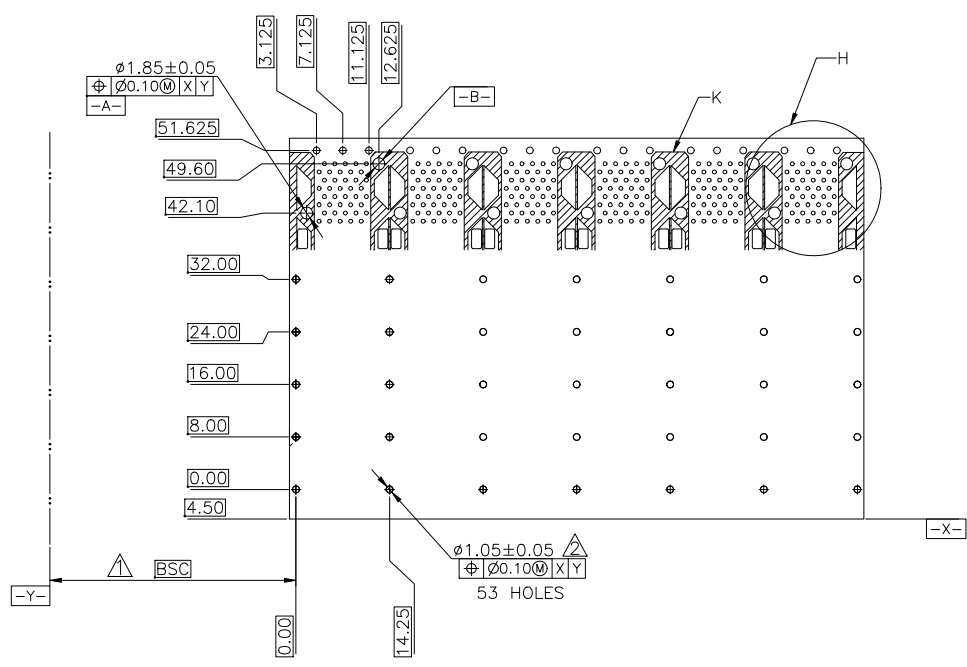


NOTES:  
MATERIAL:  
CAGE: COPPER ALLOY THICKNESS 0.25mm  
CONNECTOR:  
PLASTIC HOUSING: HIGH TEMPERATURE LCP, UL94 V-0.  
LIGHT PIPE: POLYCARBONATE; COLOR: CLEAR  
SPRING: STAINLESS STEEL, THICKNESS 0.20mm  
CONTACTS: PHOSPHOR BRONZE, THICKNESS 0.20mm  
PLATING: 15μ" MIN. GOLD ON MATING AREA,  
150μ" MIN. MATE TIN ON SOLDER TAILS.  
PACKAGING: TRAY PACKAGING.  
OPERATING TEMPERATURE: -40°C TO +85°C  
STORAGE TEMPERATURE: -55°C TO +105°C

# RoHS Compliant

TOLERANCE UNSPECIFIED		 <b>VITALCON</b> a vital connector company		FOR YOUR VITAL CONNECTION	
.0	± 0.38			TITLE: SFP2*6 CAGE+CONN	
.00	± 0.25	DRAWN BY: BECKER	PART NO: SC263	REV: A	
.000	± 0.10	CHECKED BY: VTA	SIZE: A4	UNIT:mm	SHEET:10F3
ANGLE	± 3.00°	APPROVED BY: QPF	PROJECTION		http://www.vitalconn.com
MANUFACTURING COPY					

REV.	ECN. NO.	NAME	DATE



RECOMMENDED PCB CONFIGURATION

- NOTES:
1. DATUM AND BASIC DIMENSIONS ESTABLISHED BY CUSTOMER.
  2. 1.05 mm DIAMETER HOLES ARE CHASSIS GROUND.

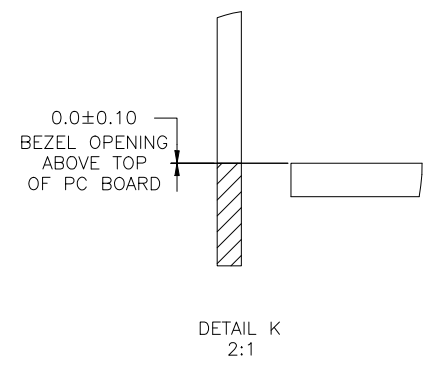
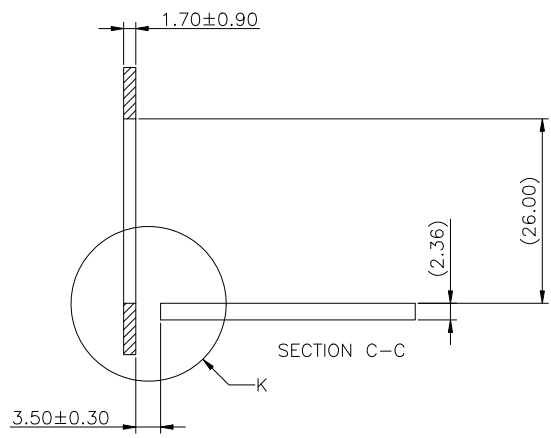
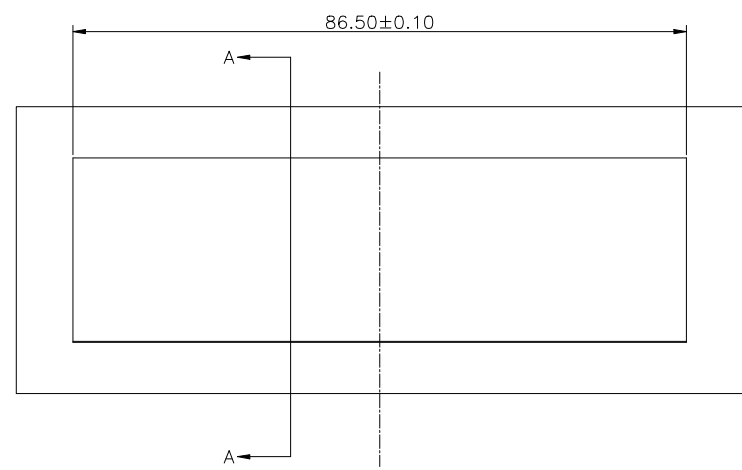
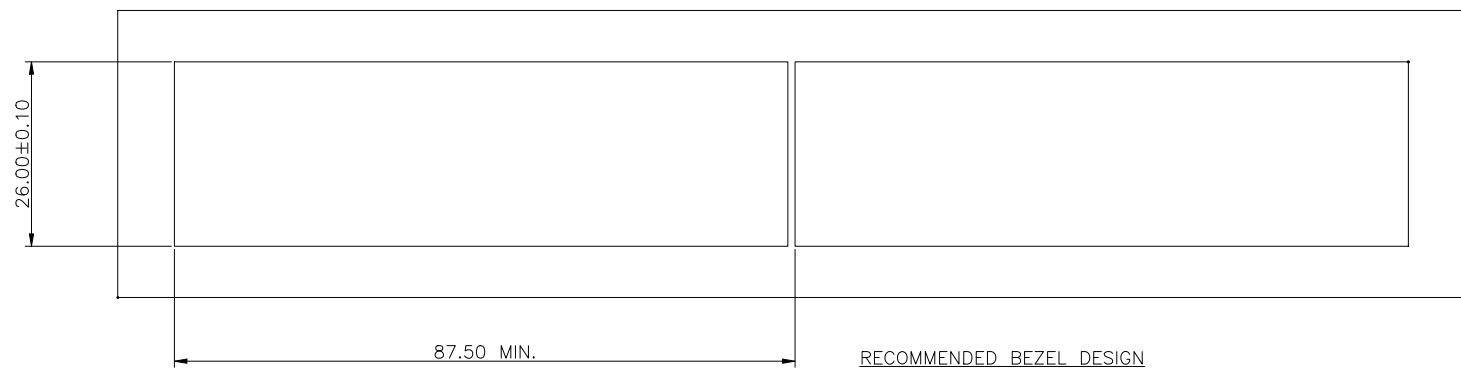
THE ENTIRE AREA OF THE CONNECTOR FOOTPRINT TO BE CONSIDERED THE KEEP OUT AREA FOR COMPONENTS (OTHER THAN LIGHT PIPE LE'S) THIS AREA IS INDICATED BY THE DASHED LINE

DETAIL LIGHT PIPE LOCATION AND OTHER ZONES  
DETAIL K  
2:1

RoHS Compliant

TOLERANCE UNSPECIFIED		 a vital connector company		FOR YOUR VITAL CONNECTION	
.0	± 0.38			TITLE: SFP2*6 CAGE+CONN	
.00	± 0.25	DRAWN BY: BECKER		PART NO: SC263	
.000	± 0.10	CHECKED BY: VTA		UNIT:mm	
ANGLE	± 3.00°	APPROVED BY: QPF		SHEET:20F3	
MANUFACTURING COPY		PROJECTION		REV: A	
				FCN: A4	
				http://www.vitalconn.com	

REV.	ECN. NO.	NAME	DATE



RoHS Compliant

TOLERANCE UNSPECIFIED		<b>VITALCON</b> a vital connector company		FOR YOUR VITAL CONNECTION			
.0	± 0.38			TITLE: SFP2*6 CAGE+CONN			
.00	± 0.25	DRAWN BY:	BECKER	PART NO:	SC263	REV: A	
.000	± 0.10	CHECKED BY:	VTA	SIZE: A4	UNIT:mm	SHEET:30F3	FCN: A4
ANGLE	± 3.00°	APPROVED BY:	QPF	PROJECTION		<a href="http://www.vitalconn.com">http://www.vitalconn.com</a>	
MANUFACTURING COPY							