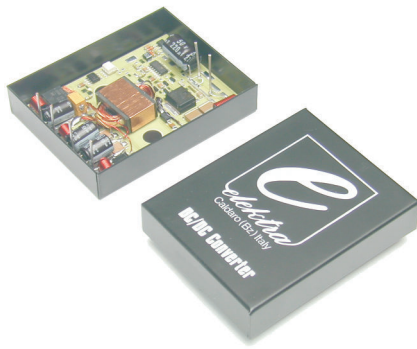


DC/DC Converter

Triple output

Serie SC

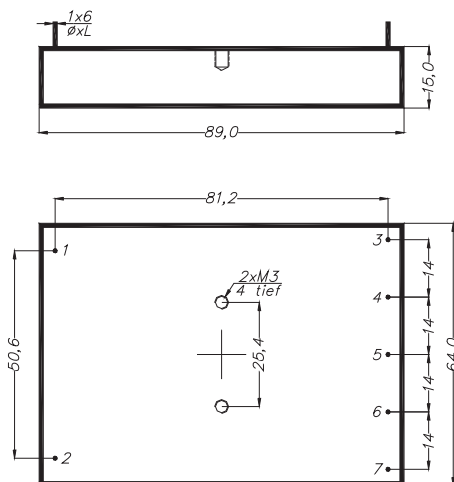
75 W



Input [V]	Output [V]	Output [A]	Model
9 ÷ 18	5 / ±12	5 / ±0,5	SC 1522
9 ÷ 18	5 / ±15	5 / ±0,5	SC 1525
18 ÷ 36	5 / ±12	5 / ±0,5	SC 2522
18 ÷ 36	5 / ±15	5 / ±0,5	SC 2525
36 ÷ 72	5 / ±12	5 / ±0,5	SC 3522
36 ÷ 72	5 / ±15	5 / ±0,5	SC 3525

SMT - on ceramic technology
 Metal case: 89 x 64 x 15 mm
 Standard pin-out
 Operating temperature range: -40 ÷ +85°C
 Storage temperature range: -40 ÷ +125°C
 Efficiency: >83%
 Radiated EMI/RFI: EN55022-B
 Isolation I/O: 500VDC
 Output voltage accuracy: ±2%
 Output ripple (20MHz): <200mVpp
 Regulation line: ±1%
 Regulation load: ±1,5%
 Short circuit proof
 Temperature coefficient: 0,02%/°C
 Optional: Remote On/Off control

Note: Typical specifications at T_a=+25°C under nominal line voltage and full-load conditions, unless otherwise noted.



Connections

- Pin 1 +Input
- Pin 2 -Input
- Pin 3 +Output 1
- Pin 4 -Output 1
- Pin 5 +Output 2
- Pin 6 Com. 2
- Pin 7 -Output 2

Production and sales office
ELEKTRA srl
 Zona Industriale, 3 - 39052 Caldaro (BZ) Italy
 Tel.: +39 0471 962255 - Fax: +39 0471 965668
<http://www.elektra.it> - e-mail: info@elektra.it



ISO 9001
 Registered

Sales office for Germany
ELEKTRA REINSTADLER GmbH
 Ambacherstr., 32 - 85247 Schwabhausen Germany
 Tel.: +49 08138 9161 - Fax: +49 08138 8484
 e-mail: elektra.reinstadler@t-online.de