

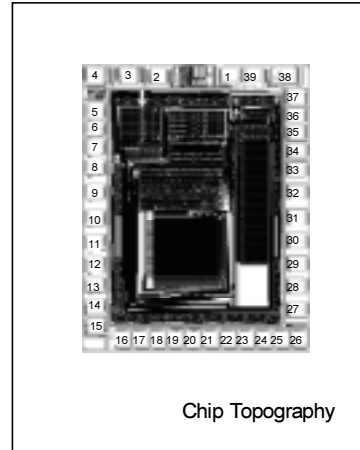
KEYBOARD ENCODER

DESCRIPTION

The SC83053 is dedicated to a keyboard encoder, specially designed for IBM PC AT and all compatible machines. The SC83053 control all scan codes, three LEDs status, scan timing and communications between the keyboard and PC. It is easy to implement a high performance, low cost keyboard with the minimal external components.

FEATURES

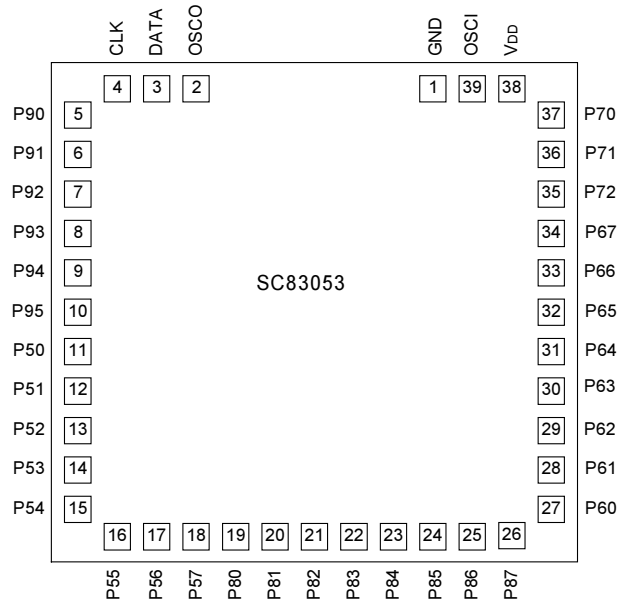
- Low cost - eliminate need external components.
- Phantom key detects.
- RC oscillator (1.8432MHz).
- Support scan code set 1, 2 and 3.
- Support PC AT and PS/2 keyboard.
- Low power CMOS device technology.
- Internal pull-up resistor.
- Tri-state outputs for easy board application.
- Built-in 4K ROM.
- Support WINDOWS™ 95, 98, 2000 keys.
- 104/107 keys with multi-media or other special application keyboard encoder.
- WINDOWS is registered trademarks of Microsoft corporation.



APPLICATION

- IBM PC AT or compatible machine keyboard.
- IBM PS/2 model 30,50,60,80 or compatible machine keyboard.
- Japanese keyboard.
- Korean keyboard.
- Brazilian keyboard.
- European keyboard.

PIN CONFIGURATION



ABSOLUTE MAXIMUM RATINGS (Ta=25°C)

Characteristic	Symbol	Value	Unit
Supply Voltage	VCC	-0.5~+7	V
Input Voltage	VIN	-0.3~+6	V
Output Voltage	VOUT	-0.3~+6	V
Temperature under Bias	TB	0~70	°C
Storage Temperature	TS	-65~150	°C

DC ELECTRICAL CHARACTERISTICS

Parameter	Symbol	Test condition	Min.	Typ.	Max.	Unit
Operating Voltage	VCC		4.5	5	5.5	V
Operating Supply Current	ICC1	FOSC=1.8432MHz			3	mA
Input Leakage	IIN	VIN=VCC, VSS			±1	μA
Input High Voltage	VIH		2.0			V
Input Low Voltage	VIL				0.8	V
Output Low Voltage	VOL1	IOL1=3.0mA			0.4	V
Output Low Voltage for LEDS	VOL2	IOL2=10mA			3.2	V
Internal Pull-high Resistance (port 6,9)	RPH1	VPH1=0V	12		23	KΩ
Internal Pull-high Resistance for DATA, CLK	RPH2	VPH2=0V	1.5	2.2	3	KΩ
Output Low Voltage for DATA CLK	VOL3	IOL3=5mA			0.4	V

AC ELECTRICAL CHARACTERISTICS

Parameter	Symbol	Min.	Typ.	Max.	Unit
Time from DATA transition to falling edge of CLK	T1	5		25	μs
Time from rising edge of CLK to DATA transition	T2	5		T4-5	μs
Duration of CLK inactive	T3	30	40	50	μs
Duration of CLK active	T4	30	40	50	μs
Time to auxiliary device inhibit after clock 11 to ensure the auxiliary device does not start another transmission	T5			50	μs
Time from inactive to active CLK transition, used to time when auxiliary device samples DATA	T6	5		25	μs
System clock	FCLK		1.8432		MHz

PIN DESCRIPTION

Pin no.	Symbol	I/O	Function
11	P50	O	Column 3 low output scan line, 3-state
12	P51	O	Column 4 low output scan line, 3-state

(To be continued)

— HANGZHOU SILAN MICROELECTRONICS JOINT-STOCK CO.,LTD —

Rev: 1.0 2001.11.8.

(Continued)

Pin no.	Symbol	I/O	Function
7-10	P92-P95	O	Low output scan line, 3-state
13	P52	O	Column 5 low output scan line, 3-state
14	P53	O	Column 6 low output scan line, 3-state
15	P54	O	Column 7 low output scan line, 3-state
16	P55	O	Column 14 low output scan line, 3-state
17	P56	O	Column 13 low output scan line, 3-state
18	P57	O	Column 12 low output scan line, 3-state
19	P80	O	Column 11 low output scan line, 3-state
20	P81	O	Column 15 low output scan line, 3-state
21	P82	O	Column 10 low output scan line, 3-state
22	P83	O	Column 8 low output scan line, 3-state
23	P84	O	Column 9 low output scan line, 3-state
24	P85	O	Column 0 low output scan line, 3-state
25	P86	O	Column 16 low output scan line, 3-state
26	P87	O	Column 17 low output scan line, 3-state
5	P90	O	Column 1 low output scan line, 3-state
6	P91	O	Column 2 low output scan line, 3-state
1	GND	I	Ground
35	SCROLL	O	Scroll lock indicator
36	NUM	O	NUM lock indicator
37	CAPS	O	Caps lock indicator
27	P60	I	Row 0 input scan line, internal pull high (17K Ω)
28	P61	I	Row 1 input scan line, internal pull high (17K Ω)
29	P62	I	Row 2 input scan line, internal pull high (17K Ω)
30	P63	I	Row 3 input scan line, internal pull high (17K Ω)
31	P64	I	Row 4 input scan line, internal pull high (17K Ω)
32	P65	I	Row 5 input scan line, internal pull high (17K Ω)
33	P66	I	Row 6 input scan line, internal pull high (17K Ω)
34	P67	I	Row 7 input scan line, internal pull high (17K Ω)
4	CLK	I/O	CLOCK line for IBM communication, internal pull high (2.2K Ω)
3	DATA	I/O	DATA line for IBM communication, internal pull high (2.2K Ω)
38	VDD	I	+5V power supply
2	OSCO	O	CLOCK output
39	R_OSCI	I	Connect 51K Ω resistor for 1.8432MHz oscillation.
40	NC		

FUNCTION DESCRIPTION

Keyboard buffer

The keyboard will buffer 16 bytes in a first-in-first-out order when the system is able to receive scan codes from the keyboard. The response codes and repeated codes will not be buffered. If keystrokes generate a multiple-byte sequence, the entire sequence must fit into the buffer or the keystroke is discarded and a buffer-overflow condition occurs.

Power-on Reset and self test

The duration of the keyboard Power-on-Reset(POR) should be within 150 milliseconds and 2 seconds after the power is applied to the keyboard.

After executing POR, the keyboard executes a self test. The LEDs are turned on at the beginning and off at the end of the self test. The self test takes a minimum 300 milliseconds and a maximum 500 milliseconds. If the self test is successful, a completion code AA hex is sent to the system and the keyboard starts scanning. If the self test fails, an error code is sent, the keyboard is disabled and waits for a command from the system. The completion codes are sent between 450 milliseconds and 2.5 seconds after POR, and between 300 and 500 milliseconds after a RESET command is acknowledged.

Keyboard data output

When the keyboard is ready to send data to the system, it first checks clock and data lines. If either one is in the low state, data is stored in the keyboard buffer. If both are in the high state, keyboard starts clocking data out. Data will be valid before the trailing edge and after the leading edge of the clock pulse. During the transmission the keyboard checks the clock line at least every 60 microseconds. If the system lowers the clock lines before the leading edge of the 10th clock, the keyboard should stop sending, then buffer the data and return clock and data lines to high state.

Keyboard data input

When the system is ready to send data to the keyboard, it first checks clock line to see if keyboard is sending data. If keyboard is not sending data or it is sending data but has not reached the 10th clock, the system can inhibit the interface by forcing the clock line low for more than 60 microseconds and prepares to send data. The keyboard checks clock line status at least every 5 milliseconds. If a system Request to Send (RTS) is detected, the keyboard clocks 11 bits in. After the 10th bit, the keyboard checks for a high state in data line then pulls it low and clocks one more bit to signal the system that data has been received. If data is low after the 10th bit, it indicates a frame error. The keyboard should continue to count until data line goes high, then pulls it low and issues a RESEND to the system.

Command from the system

The system can send commands to the keyboard at any time. The keyboard needs to respond within 20 milliseconds, unless the system prevents keyboard output, when doing self test or executing a RESET.

The following are the keyboard input commands and the actions that keyboard needs to take.

Set /Reset Status indicators (Hex ED)

- Responds ACK.
- Receives option byte.
- Responds ACK.
- Updates status indicators.
- Returns to previous scanning state.

Echo (Hex EEH)

- Responds with EE hex.
- Returns to previous scanning state.

Invalid commands (Hex EF and F1)

- Returns a RESEND command.
- Returns to previous scanning state.

Select Alternate Scan Codes (Hex F0)

- Responds ACK.
- Clears output buffer.
- Sets the default typematic rate/delay.
- Clears last typematic key.
- Receives option byte.
- Responds ACK.
- Option byte =
01 : selects scan code set 1
02 : selects scan code set 2

03 : selects scan code set 3

- Returns to previous scanning rate.

Read ID (F2)

- Responds with ACK.
- Discontinues scanning.
- Sends two ID bytes. The second byte will be sent within 500 uS after first byte.
- Resumes scanning.

Set Typematic Rate/Delay (Hex F3)

- Responds ACK.
- Receives rate/delay value byte
- Responds ACK.
- Set rate/delay (* Note 1)
- Returns to previous scanning state.

* Note 1

1. Repeat period = $(8+A) \times (2B) \times 0.00417$ seconds

A : binary value of bits 2, 1, and 0.

B : binary value of bits 4 and 3.

2. Delay = $(C +1) \times 250$ milliseconds

C : binary value of bits 6 and 5. Bit 7 is always 0.

bit4~bit0	Typematic rate $\pm 20\%$	Bit 4~bit0	Typematic rate $\pm 20\%$
00000	30.0	10000	7.5
00001	26.7	10001	6.7
00010	24.0	10010	6.0
00011	21.8	10011	5.5
00100	20.0	10100	5.0
00101	18.5	10101	4.6
00110	17.1	10110	4.3
00111	16.0	10111	4.0
01000	15.0	11000	3.7
01001	13.3	11001	3.3
01010	12.0	11010	3.0
01011	10.9	11011	2.7
01100	10.0	11100	2.5
01101	9.2	11101	2.3
01110	8.6	11110	2.1
01111	8.0	11111	2.0

3. Default rate = 10.9 chars/sec + 20%

Default delay = 500 ms \pm 20%

Enable (Hex F4)

- Responds with ACK.
- Clears output buffer.
- Clears last typematic key.
- Start scanning.

Default Disable (Hex F5)

- Responds with ACK.
- Resets all conditions to power-on state.
- Clears output buffer.
- Sets the default key type (scan code set 3 only).
- Set the default typematic rate/delay.

———— **HANGZHOU SILAN MICROELECTRONICS JOINT-STOCK CO.,LTD** ————

Rev: 1.0 2001.11.8.

- Clears last typematic key.
- Stops scanning,

Set Default (Hex F6)

- Responds with ACK.
- Resets all conditions to power-on state.
- Clears output buffer.
- Sets the default key type (scan code set 3 only).
- Set the default typematic rate/delay.
- Clears last typematic key.
- Continues scanning,

Set All Keys (Hex F7,F8,F9,FA)

- Responds ACK.
- Clears output buffer.
- Sets all key type (affect only scan code set 3 operation).

F7 : Typematic

F8 : Make/Break

F9 : Make

FA : Typematic/Make/Break

- Returns to previous scanning rate.

Set Key Type (Hex FB,FC,FD)

- Responds ACK.
- Clears output buffer.
- Receives key ID byte
- Responds ACK.
- Sets key ID type (affect only scan code set 3 operation).

FB : Typematic

FC : Make/Break

FD : Make

- Returns to previous scanning rate.

Resend (Hex FE)

-Sends the previous output again. If the previous byte is RESEND, the last byte before RESEND shall be sent.

Reset (Hex FF)

- Responds ACK.
- Checks clock and data lines - Reset in the high state for at least 500 microseconds or receives another command.
- Default to scan code set 2.

Command to the system

The following are the keyboard output commands.

Acknowledge (Hex FA)

The keyboard sends an acknowledge in response to any valid command from the system except for RESEND and ECHO.

BAT Completion Code (Hex AA)

This command is issued after successful completion of keyboard self test.

Echo (Hex EE)

The keyboard sends this code in response to an ECHO command.

Keyboards ID (Hex 83AB)

The 2 byte ID is issued to respond to READ ID command. The low byte is sent first, followed by the high byte.

Keyboard buffer Overrun (Hex 00 or FF)

If keyboard buffer overflows, the overrun code will replace the last byte in the buffer. If the keyboard is using scan code set 1 , the code is hex FF. For sets 2 and 3, the code is hex 00.

Resend (Hex FE)

When the keyboard receives an invalid input or any input with incorrect parity, the RESEND command is sent.

Keyboard Scan Code Table

The keyboard contains 3 scan code sets. The system defaults to scan code set 2, but can be switched to set 1 or set 3. The following tables show the key numbers and three scan code sets in hexadecimal values. All the keys are typematics except for the pause key. When a key is pressed down, the make scan code is sent to the system. When the key is released, its break code is sent. If two or more keys are held down, only the last key pressed repeats at the typematic rate. Typematic operation stops when the last pressed key is released, even if other keys are being released or some other keys are still held down.

The following table shows three scan code sets used in the keyboard.

Scan code set 1

Key	Make code	Break code	Key	Make code	Break code
`(~)	29	A9	X	2D	AD
1	02	82	C	2E	AE
2	03	83	V	2F	AF
3	04	84	B	30	B0
4	05	85	N	31	B1
5	06	86	M	32	B2
6	07	87	,(<)	33	B3
7	08	88	.(>)	34	B4
8	09	89	/(!)	35	B5
9	0A	8A	SHIFT_R	36	B6
0	0B	8B	CTRL_L	1D	9D
-(-)	0C	8C	ALT_L	38	B8
=(+)	0D	8D	SPACE	39	B9
BACK SPACE	0E	8E	ALT_R	E0 38	E0 B8
TAB	0F	8F	CTRL_R	E0 1D	E0 9D
Q	10	90	NUM	45	C5
W	11	91	(7)	47	C7
E	12	92	(4)	4B	CB
R	13	93	(1)	4F	CF
T	14	94	(8)	48	C8
Y	15	95	(5)	4C	CC

(To be continued)

(Continued)

Key	Make code	Break code	Key	Make code	Break code
U	16	96	(2)	50	D0
I	17	67	(0)	52	D2
O	18	98	(*)	37	B7
P	19	99	(9)	49	C9
[([1A	9A	(6)	4D	CD
] (]	1B	9B	(3)	51	D1
\ (\) @5	2B	AB	(DEL)	53	D3
CAPS	3A	BA	(-)	4A	CA
A	1E	9E	(+)	4E	CE
S	1F	9F	(ENTER)	E0 1C	E0 9C
D	20	A0	ESC	01	81
F	21	A1	F1	3B	BB
G	22	A2	F2	3C	BC
H	23	A3	F3	3D	BD
J	24	A4	F4	3E	BE
K	25	A5	F5	3F	BF
L	26	A6	F6	40	C0
;()	27	A7	F7	41	C1
' (")	28	A8	F8	42	C2
K42 @2	2B	AB	F9	43	C3
ENTER	1C	9C	F10	44	C4
SHIFT_L	2A	AA	F11	57	D7
K45 @2	56	D6	F12	58	D8
Z	2C	AC	SCROLL	46	C6

Key	Base case, or shift+num lock make/break	Shift case @3 make/break	Num lock make/break
INS	E0 52/E0 D2	E0 AA E0 52 /E0 D2 E0 2A	E0 2A E0 52 /E0 D2 E0 AA
DEL	E0 53/E0 D3	E0 AA E0 53 /E0 D3 E0 2A	E0 2A E0 53 /E0 D3 E0 AA
LEFT	E0 4B/E0 CB	E0 AA E0 4B /E0 CB E0 2A	E0 2A E0 4B /E0 CB E0 AA

(To be continued)

 ——— **HANGZHOU SILAN MICROELECTRONICS JOINT-STOCK CO.,LTD** ———

Rev: 1.0 2001.11.8.

(Continued)

Key	Base case, or shift+num lock make/break	Shift case @3 make/break	Num lock make/break
HOME	E0 47/E0 C7	E0 AA E0 47 /E0 C7 E0 2A	E0 2A E0 47 /E0 C7 E0 AA
END	E0 4F/E0 CF	E0 AA E0 4F /E0 CF E0 2A	E0 2A E0 4F /E0 CF E0 AA
UP	E0 48/E0 C8	E0 AA E0 48 /E0 C8 E0 2A	E0 2A E0 48 /E0 C8 E0 AA
DOWN	E0 50/E0 D0	E0 AA E0 50 /E0 D0 E0 2A	E0 2A E0 50 /E0 D0 E0 AA
PAGE UP	E0 49/E0 C9	E0 AA E0 49 /E0 C9 E0 2A	E0 2A E0 49 /E0 C9 E0 AA
PAGE DOWN	E0 51/E0 D1	E0 AA E0 51 /E0 D1 E0 2A	E0 2A E0 51 /E0 D1 E0 AA
RIGHT	E0 4D/E0 CD	E0 AA E0 4D /E0 CD E0 2A	E0 2A E0 4D /E0 CD E0 AA

Key	Scan code make/break	Shift case make/break @3
(/)	E0 35/E0 B5	E0 AA E0 35/E0 B5 E0 2A

Key	Scan code make/break	Ctrl case, shift case make/break	Alt case make/break
PRINT	E0 2A E0 37 /E0 B7 E0 AA	E0 37 /E0 B7	54/D4

Key	Make code	Ctrl key pressed
PAUSE @4	E1 1D 45 E1 9D C5	E0 46 E0 C6

Note:

- @1. 101-key keyboard only.
- @2. 102 key keyboard only.
- @3. If the left shift key is held down, the AA/2A shift make and break is sent with the other scan codes. If the right shift key is held down, B6/36 is sent. If both shift keys are down, both sets of codes are sent with the other scan code.
- @4. This key is not typematic. All associated scan codes occur on the make of the key.

—— HANGZHOU SILAN MICROELECTRONICS JOINT-STOCK CO.,LTD ——

Rev: 1.0 2001.11.8.

Scan code set 2

Key	Make code	Break code	Key	Make code	Break code
`(~)	0E	F0 0E	X	22	F0 22
1	16	F0 16	C	21	F0 21
2	1E	F0 1E	V	2A	F0 2A
3	26	F0 26	B	32	F0 32
4	25	F0 25	N	31	F0 31
5	2E	F0 2E	M	3A	F0 3A
6	36	F0 36	,(<)	41	F0 41
7	3D	F0 3D	.(>)	49	F0 49
8	3E	F0 3E	/(!)	4A	F0 4A
9	46	F0 46	SHIFT_R	59	F0 59
0	45	F0 45	CTRL_L	14	F0 14
-(-)	4E	F0 4E	ALT_L	11	F0 11
=(+)	55	F0 55	SPACE	29	F0 29
BACK SPACE	66	F0 66	ALT_R	E0 11	F0 E0 11
TAB	0D	F0 0D	CTRL_R	E0 14	F0 E0 14
Q	15	F0 15	NUM	77	F0 77
W	1D	F0 1D	(7)	6C	F0 6C
E	24	F0 24	(4)	6B	F0 6B
R	2D	F0 2D	(1)	69	F0 69
T	2C	F0 2C	(8)	75	F0 75
Y	35	F0 35	(5)	73	F0 73
U	3C	F0 3C	(2)	72	F0 72
I	43	F0 43	(0)	70	F0 70
O	44	F0 44	(*)	7C	F0 7C
P	4D	F0 4D	(9)	7D	F0 7D
[(!)	54	F0 54	(6)	74	F0 74
](!)	5B	F0 5B	(3)	7A	F0 7A
\()@5	5D	F0 5D	(DEL)	71	F0 71
CAPS	58	F0 58	(-)	7B	F0 7B
A	1C	F0 1C	(+)	79	F0 79
S	1B	F0 1B	(ENTER)	E0 5A	F0 E0 5A
D	23	F0 23	ESC	76	F0 76
F	2B	F0 2B	F1	05	F0 05

(To be continued)

 ——— **HANGZHOU SILAN MICROELECTRONICS JOINT-STOCK CO.,LTD** ———

Rev: 1.0 2001.11.8.

(Continued)

Key	Make code	Break code	Key	Make code	Break code
G	34	F0 34	F2	06	F0 06
H	33	F0 33	F3	04	F0 04
J	3B	F0 3B	F4	0C	F0 0C
K	42	F0 42	F5	03	F0 03
L	4B	F0 4B	F6	0B	F0 0B
;()	4C	F0 4C	F7	83	F0 83
' (")	52	F0 52	F8	0A	F0 0A
K42 @6	5D	F0 5D	F9	01	F0 01
ENTER	5A	F0 5A	F10	09	F0 09
SHIFT_L	12	F0 12	F11	78	F0 78
K45 @6	61	F0 61	F12	07	F0 07
Z	1A	F0 1A	SCROLL	7E	F0 7E

Key	Base case, or shift+num lock make/break	Shift case @7 make/break	Num lock make/break
INS	E0 70/E0 F0 70	E0 F0 12 E0 70 /E0 F0 70 E0 12	E0 F0 12 E0 70 /E0 F0 70 E0 F0 12
DEL	E0 71/E0 F0 71	E0 F0 12 E0 71 /E0 F0 71 E0 12	E0 F0 12 E0 71 /E0 F0 71 E0 F0 12
LEFT	E0 6B/E0 F0 6B	E0 F0 12 E0 6B /E0 F0 6B E0 12	E0 F0 12 E0 6B /E0 F0 6B E0 F0 12
HOME	E0 6C/E0 F0 6C	E0 F0 12 E0 6C /E0 F0 6C E0 12	E0 F0 12 E0 6C /E0 F0 6C E0 F0 12
END	E0 69/E0 F0 69	E0 F0 12 E0 69 /E0 F0 69 E0 12	E0 F0 12 E0 69 /E0 F0 69 E0 F0 12
UP	E0 75/E0 F0 75	E0 F0 12 E0 75 /E0 F0 75 E0 12	E0 F0 12 E0 75 /E0 F0 75 E0 F0 12
DOWN	E0 72/E0 F0 72	E0 F0 12 E0 72 /E0 F0 72 E0 12	E0 F0 12 E0 72 /E0 F0 72 E0 F0 12
PAGE UP	E0 7D/E0 F0 7D	E0 F0 12 E0 7D /E0 F0 7D E0 12	E0 F0 12 E0 7D /E0 F0 7D E0 F0 12
PAGE DOWN	E0 7A/E0 F0 7A	E0 F0 12 E0 7A /E0 F0 7A E0 12	E0 F0 12 E0 7A /E0 F0 7A E0 F0 12
RIGHT	E0 74/E0 F0 74	E0 F0 12 E0 74 /E0 F0 74 E0 12	E0 F0 12 E0 74 /E0 F0 74 E0 F0 12

——— HANGZHOU SILAN MICROELECTRONICS JOINT-STOCK CO.,LTD ———

Rev: 1.0 2001.11.8.

Key	Scan code make/break	Shift case make/break @3
(/)	E0 4A/E0 F0 4A	E0 F0 12 E0 4A/ E0 F0 4A E0 12

Key	Scan code make/break	Ctrl case, shift case make/break	Alt case make/break
PRINT	E0 12 E0 7C /E0 F0 7C E0 F0 12	E0 7C/E0 F0 7C	84/F0 84

Key	Make code	Ctrl key pressed
PAUSE @8	E1 14 77 E1 F0 14 F0 77	E0 7E E0 F0 7E

Note .

@5 : 101-key keyboard only.

@6 : 102-key keyboard only.

@7 : If the left Shift key is held down, the F0 12/12 shift make and break is sent with the other scan codes.

If the right Shift key is held down, F0 59/59 is sent. If both Shift keys are down, both sets of codes are sent with the other scan code.

@8 : This key is not typematic. All associated scan codes occur on the make of the key.

Scan code set 3

Key	Make code	Break code	Default key state
^(~)	0E	F0 0E	Typematic
1	16	F0 16	Typematic
2	1E	F0 1E	Typematic
3	26	F0 26	Typematic
4	25	F0 25	Typematic
5	2E	F0 2E	Typematic
6	36	F0 36	Typematic
7	3D	F0 3D	Typematic
8	3E	F0 3E	Typematic
9	46	F0 46	Typematic
0	45	F0 45	Typematic
-(-)	4E	F0 4E	Typematic
=(+)	55	F0 55	Typematic
BACK SPACE	66	F0 66	Typematic

(To be continued)

— HANGZHOU SILAN MICROELECTRONICS JOINT-STOCK CO.,LTD —

Rev: 1.0 2001.11.8.

(Continued)

Key	Make code	Break code	Default key state
TAB	0D	F0 0D	Typematic
Q	15	F0 15	Typematic
W	1D	F0 1D	Typematic
E	24	F0 24	Typematic
R	2D	F0 2D	Typematic
T	2C	F0 2C	Typematic
Y	35	F0 35	Typematic
U	3C	F0 3C	Typematic
I	43	F0 43	Typematic
O	44	F0 44	Typematic
P	4D	F0 4D	Typematic
[({	54	F0 54	Typematic
]})	5B	F0 5B	Typematic
\) @9	5D	F0 5D	Typematic
CAPS	14	F0 14	Make/break
A	1C	F0 1C	Typematic
S	1B	F0 1B	Typematic
D	23	F0 23	Typematic
F	2B	F0 2B	Typematic
G	34	F0 34	Typematic
H	33	F0 33	Typematic
J	3B	F0 3B	Typematic
K	42	F0 42	Typematic
L	4B	F0 4B	Typematic
:(:)	4C	F0 4C	Typematic
' (")	52	F0 52	Typematic
K42 @10	53	F0 53	Typematic
ENTER	5A	F0 5A	Typematic
SHIFT_L	12	F0 12	Make/break
K45 @10	13	F0 13	Typematic
Z	1A	F0 1A	Typematic
X	22	F0 22	Typematic
C	21	F0 21	Typematic

(To be continued)

 ——— **HANGZHOU SILAN MICROELECTRONICS JOINT-STOCK CO.,LTD** ———

Rev: 1.0 2001.11.8.

(Continued)

Key	Make code	Break code	Default key state
V	2A	F0 2A	Typematic
B	32	F0 32	Typematic
N	31	F0 31	Typematic
M	3A	F0 3A	Typematic
.(<)	41	F0 41	Typematic
.(>)	49	F0 49	Typematic
/(?)	4A	F0 4A	Typematic
SHIFT_R	59	F0 59	Make/break
CTRL_L	11	F0 11	Make/break
ALT_L	19	F0 19	Make/break
SPACE	29	F0 29	Typematic
ALT_R	39	F0 39	Make only
CTRL_R	58	F0 58	Make only
INS	67	F0 67	Make only
DEL	64	F0 64	Typematic
LEFT	61	F0 61	Typematic
HOME	6E	F0 6E	Make only
END	65	F0 65	Make only
UP	63	F0 63	Typematic
DOWN	60	F0 60	Typematic
PAGE UP	6F	F0 6F	Make only
PAGE DOWN	6D	F0 6D	Make only
RIGHT	6A	F0 6A	Typematic
NUM	76	F0 76	Make only
(7)	6C	F0 6C	Make only
(4)	6B	F0 6B	Make only
(1)	69	F0 69	Make only
(/)	77	F0 77	Make only
(8)	75	F0 75	Make only
(5)	73	F0 73	Make only
(2)	72	F0 72	Make only
(0)	70	F0 70	Make only
(*)	7E	F0 7E	Make only

(To be continued)

 ——— **HANGZHOU SILAN MICROELECTRONICS JOINT-STOCK CO.,LTD** ———

Rev: 1.0 2001.11.8.

(Continued)

Key	Make code	Break code	Default key state
(9)	7D	F0 7D	Make only
(6)	74	F0 74	Make only
(3)	7A	F0 7A	Make only
(DEL)	71	F0 71	Make only
(-)	84	F0 84	Make only
(+)	7C	F0 7C	Typematic
(ENTER)	79	F0 79	Make only
ESC	08	F0 08	Make only
F1	07	F0 07	Make only
F2	0F	F0 0F	Make only
F3	17	F0 17	Make only
F4	1F	F0 1 F	Make only
F5	27	F0 27	Make only
F6	2F	F0 2F	Make only
F7	37	F0 37	Make only
F8	3F	F0 3F	Make only
F9	47	F0 47	Make only
F10	4F	F0 4F	Make only
F11	56	F0 56	Make only
F12	5E	F0 5E	Make only
PRINT	57	F0 57	Make only
SCROLL	5F	F0 5F	Make only
PAUSE	62	F0 62	Make only

Note: @ 9 : 101-key keyboard only

@10 : 102-key keyboard only

New key codes for scan set 1:

New key	Make	Break
LWIN	E0 5B	E0 DB
RWIN	E0 5C	E0 DC
APP	E0 5D	E0 DD
N-CHG(131)	7B	FB

(To be continued)

 ——— **HANGZHOU SILAN MICROELECTRONICS JOINT-STOCK CO.,LTD** ———

Rev: 1.0 2001.11.8.

(Continued)

New key	Make		Break	
CHG (132)	79		F9	
ROMA (133)	70		F0	
K14	7D		FD	
K56	73		F3	
K107	7E		FE	
KL	F1		X	
KR	F0		X	
POWER	E0	5E	E0	DE
SLEEP	E0	5F	E0	DF
WAKE UP	E0	63	E0	E3

New key codes for scan set 2:

New key	Make		Break		
LWIN	E0	1F	E0	F0	1F
RWIN	E0	27	E0	F0	27
APP	E0	2F	E0	F0	2F
N-CHG(131)	67		F0 67		
CHG (132)	64		F0 64		
ROMA (133)	13		F0 13		
K14	6A		F0 6A		
K56	51		F0 51		
K107	6D		F0 6D		
KL	F1		X		
KR	F2		X		
POWER	E0	37	E0	F0	37
SLEEP	E0	3F	E0	F0	3F
WAKE UP	E0	5E	E0	F0	5E

New key codes for scan set 3:

New key	Make	Break		
LWIN	8B	F0	8B	MAKE/BREAK
RWIN	8C	F0	8C	MAKE/BREAK
APP	8D	F0	8D	MAKE/BREAK
N-CHG(131)	85	F0	85	MAKE
CHG (132)	86	F0	86	MAKE
ROMA (133)	87	F0	87	MAKE
K14	5D	F0	5D	TYPEMATIC
K56	51	F0	51	TYPEMATIC
K107	7B	F0	7B	TYPEMATIC
KL	F1		X	
KR	F2		X	
POWER	X		X	
SLEEP	X		X	
WAKE UP	X		X	

Windows 2000 multi-media key code:

	SET1		SET2	
	MAKE	BREAK	MAKE	BREAK
K130: WWW Back	E06A	E0EA	E038	E0F038
K131: WWW Forward	E069	E0E9	E030	E0F030
K132: WWW stop	E068	E0E8	E028	E0F028
K133: WWW Refresh	E067	E0E7	E020	E0F020
K134: WWW Search	E065	E0E5	E010	E0F010
K135: WWW Favorites	E066	E0E6	E018	E0F018
K136: WWW Web/Home	E032	E0B2	E03A	E0F03A
K137: Mail	E06C	E0EC	E048	E0F048
K138: Mute	E020	E0A0	E023	E0F023
K139: Volume-	E02E	E0AE	E021	E0F021
K140: Volume+	E030	E0B0	E032	E0F032
K141: Play/Pause	E022	E0A2	E034	E0F034
K142: Stop	E024	E0A4	E03B	E0F03B
K143: Pre Track	E010	E090	E015	E0F015
K144: Next track	E019	E099	E04D	E0F04D
K145: Media Select	E06D	E0ED	E050	E0F050
K146: My Computer	E06B	E0EB	E040	E0F040
K147: Calculator	E021	E0A1	E02B	E0F02B

— *HANGZHOU SILAN MICROELECTRONICS JOINT-STOCK CO.,LTD* —

Rev: 1.0 2001.11.8.

Turbo Function:

Fn+	F1	2.1Hz	F6	30Hz
	F2	4.2Hz	F7	46Hz
	F3	7.2Hz	F11	Key Loak
	F4	16.3Hz		
	F5	21Hz		

Internal-Multikey Function:

	Multi-Media Function	Internal Function	O.S. Function
Fn+ (M/Mode)	Pad_2 Volume-	Pad_Enter Web/Home	Pad_0 My Computer
	Pad_3 Play/Pause	Pad_+ Mail	Pad_1 Calculator
	Pad_4 Pre Track	Pad_- Favorites	
	Pad_5 Media	Pad_ Search	
	Pad_6 Next Track	Right Arrow Forward	E Eur Key
	Pad_7 Mute	Left Arrow Back	
	Pad_8 Volume+	Down Arrow Stop	
	Pad_9 Stop	Up Arrow Refresh	

Fig1. The Windows 2000 keyboard layout

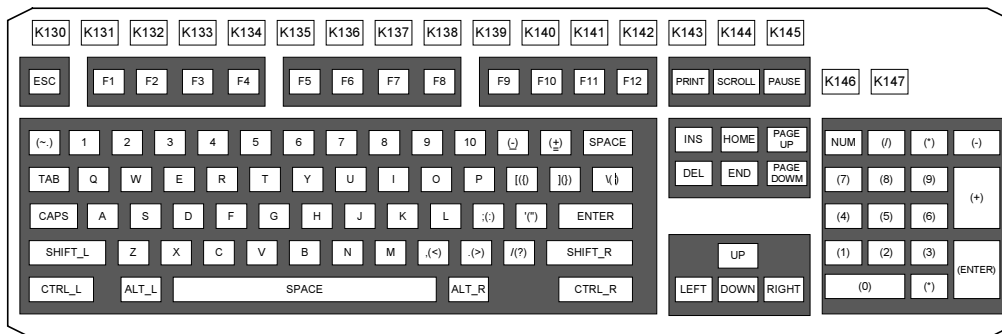


Fig2. The 107-key keyboard layout

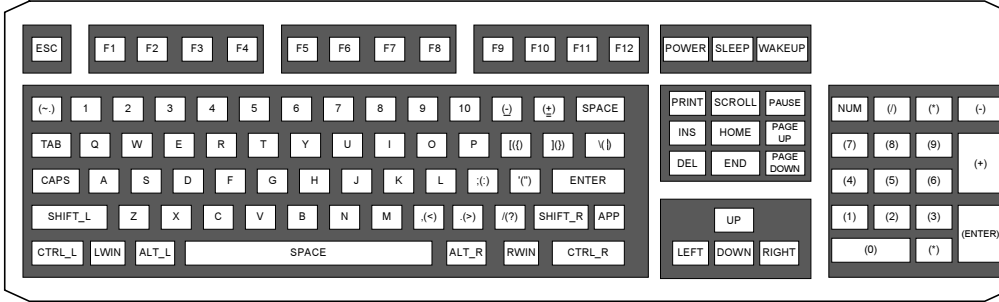
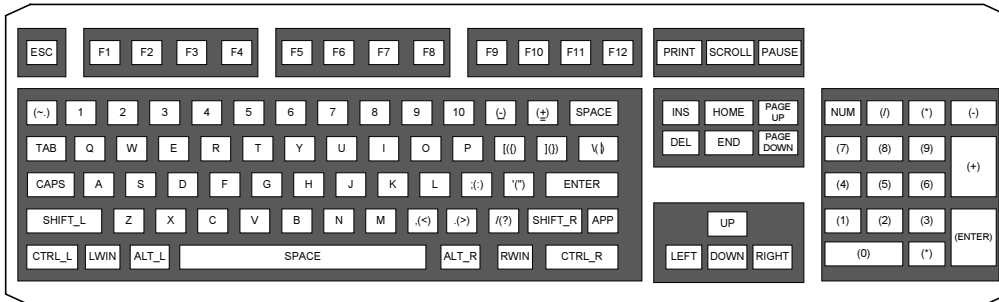


Fig3. The 104-key keyboard layout



TIMING DIAGRAMS

Fig4. Keyboard output data timings

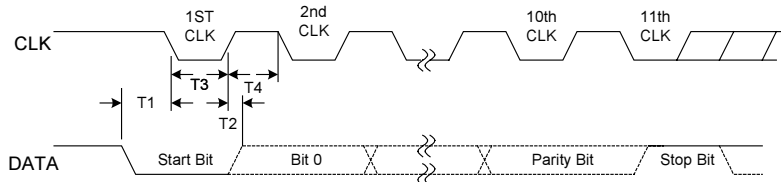
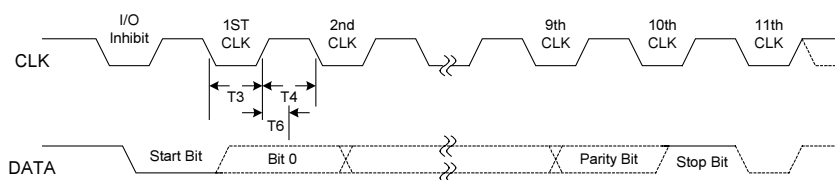
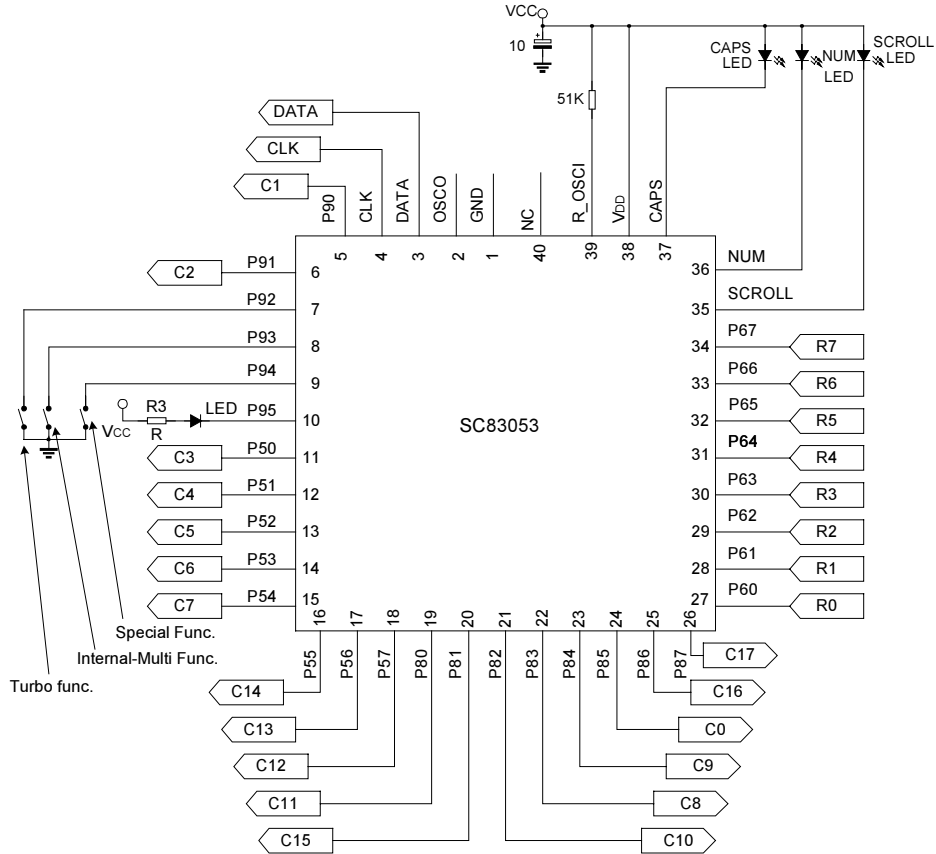


Fig5. Keyboard input data timings

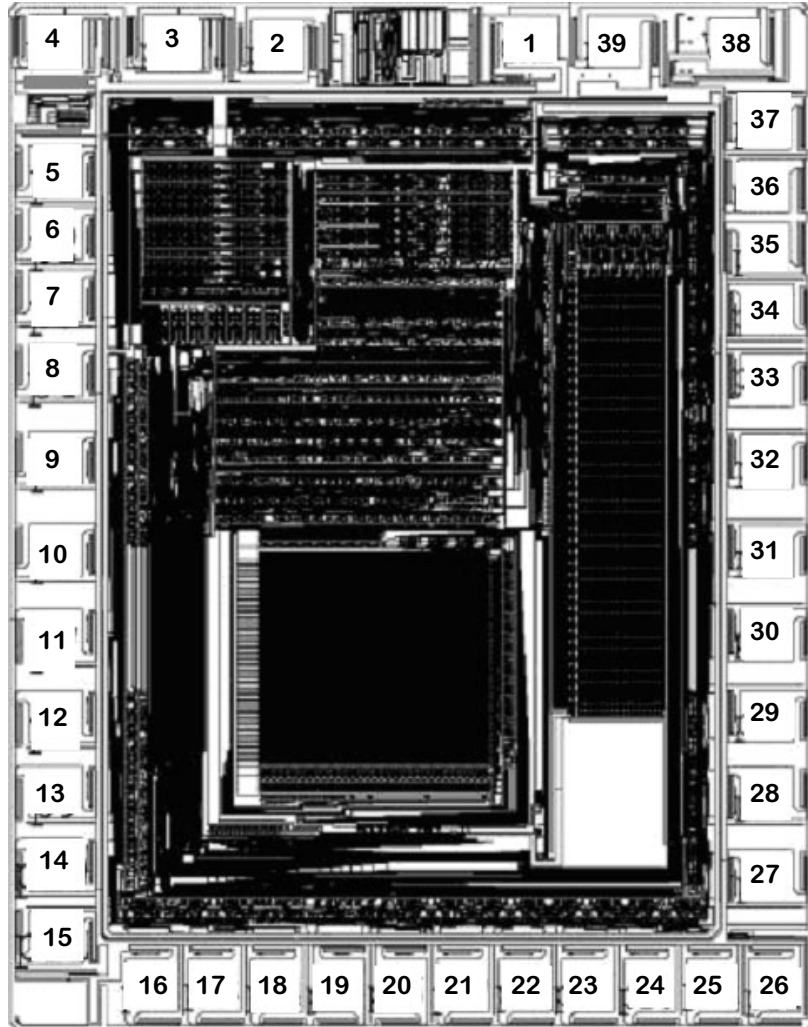


APPLICATION CIRCUIT



	R0	R1	R2	R3	R4	R5	R6	R7
C0	PAUSE 126	POWER	€	SLEEP	CRTL-R 064	WAKE UP	CTRL-L 058	F5 116
C1	Q 017	TAB 016	A 031	ESA 110	Z 046	N-CHG 131	`(~) 001	1(!) 002
C2	W 018	CAP 030	S 032	K45 045	X 047	CHG 132	F1 112	2(@) 003
C3	E 019	F3 114	D 033	F4 115	C 048	ROMA 133	F2 113	3(#) 004
C4	R 020	T 021	F 034	G 035	V 049	B 050	5(%) 006	4(\$) 005
C5	U 023	Y 022	J 037	H 036	M 052	N 051	6(^) 007	7(&) 008
C6	I 024]({) 028	K 038	F6 117	,(<) 053	K56 056	+ (=) 013	8(* 009
C7	O 025	F7 118	L 039		.(>) 054	APP APP 119	F8 119	9(') 010
C8	P 026	[({) 027	;(:) 040	'(") 041	K42 042	/ (?) 055	_ (-) 012	0(') 011
C9	SCROLL 125		FN	ALT-L 060	M/Mode	ALT-R 062		PRINT 124
C10	K14 014	BACK 015	\() 029	F11 122	ENTER 043	F12 123	F9 120	F10 121
C11	7 (K) 091	4 (K) 092	1 (K) 093	SPACE 061	NUM 090	↓ 084	DEL 076	POWER
C12	8 (K) 096	5 (K) 097	2 (K) 098	0 (K) 099	/ (K) 095	→ 089	INS 075	SLEEP
C13	9 (K) 101	6 (K) 102	3 (K) 103	¥ (K) 104	* (K) 100	- 105	PAGE UP 085	PAGE DOWN 086
C14	+ (K) 106	 107	ENTER 108	↑ 083	Play/Pause	← 079	HOME 080	END 081
C15	Wake up	SHIFT-L 044	SHIFT-R 057	Volume-	Volume+	Next track	Prev track	Media
C16	Mail	WIN-L	WWWforward	WWWstop	WWWback	WWWrefresh	mute	WWWsearch
C17	K150 (KC-L)	WWWfavorite	WIN-R	MyComputer	stop	calculator	Web/home	K151 (KC-R)

CHIP TOPOGRAPHY



Chip Size: $1.72 \times 2.17(\text{mm}^2)$

The substrate should be connected to the GND level.

— HANGZHOU SILAN MICROELECTRONICS JOINT-STOCK CO.,LTD —

Rev: 1.0 2001.11.8.

PAD COORDINATES (Unit: μm)

Pad No.	Symbol	X	Y	Pad No.	Symbol	X	Y
1	GND	234.40	937.20	21	P82	98.80	-933.75
2	OSCO	-270.90	928.25	22	P83	221.80	-933.75
3	DATA	-482.25	938.55	23	P84	345.00	-933.75
4	CLK	-708.20	938.40	24	P85	468.20	-933.75
5	P90	-707.95	679.15	25	P86	591.40	-933.75
6	P91	-707.95	555.95	26	P87	714.60	-933.75
7	P92	-707.95	432.75	27	P60	699.55	-716.85
8	P93	-707.95	284.20	28	P61	699.55	-553.00
9	P94	-707.95	111.65	29	P62	699.55	-400.45
10	P95	-707.95	-70.75	30	P63	699.55	-239.85
11	P50	-707.95	-239.30	31	P64	699.55	-72.80
12	P51	-707.95	-401.25	32	P65	699.55	106.10
13	P52	-707.95	-550.70	33	P66	699.55	265.20
14	P53	-707.95	-695.40	34	P67	699.55	404.25
15	P54	-707.95	-840.50	35	P72	694.35	527.45
16	P55	-517.20	-933.75	36	P71	694.35	650.65
17	P56	-394.00	-933.75	37	P70	694.35	773.85
18	P57	-270.80	-933.75	38	VDD	633.95	929.90
19	P80	-147.60	-933.75	39	OSCI	397.05	937.25
20	P81	-24.40	-933.75				

Note: The original point of the coordinate is the die center.