

SCDS Series

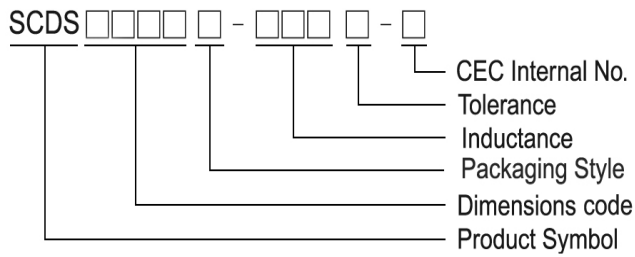
Features

- RoHS compliant
- Available in magnetically shielding
- Low DC resistance
- Suitable for large currents
- Ideal for DC – DC converter inductor applications
- Available on tape and reel for auto surface mounting

Applications

- Power supply for VTRs
- OA equipment
- LCD televisions
- Notebook PCs
- Portable communication devices
- DC / DC converters, etc

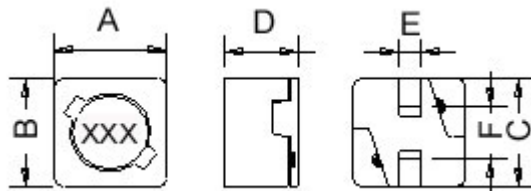
Product Identification



- T : Packaging: Tape and Reel

SCDS 62 / 64

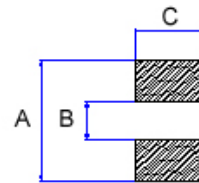
Shape and Dimensions



Dimensions in mm

TYPE	A	B	C	D	E	F
SCDS62	6.2±0.3	5.9±0.3	6.0±0.3	3 ⁺⁰	1.5	2.8
SCDS64	6.2±0.3	5.9±0.3	6.0±0.3	5 ⁺⁰	1.5	2.8

Recommended Pattern

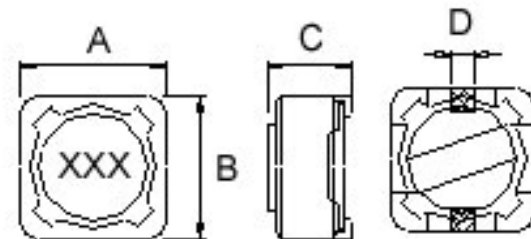


Dimensions in mm

TYPE	A	B	C
SCDS62	8.1	4	2.5
SCDS64	8.1	4	2.5

SCDS 73/ 74

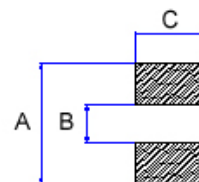
Shape and Dimensions



Dimension in mm

TYPE	A	B	C	D
SCDS73	7.3±0.2	7.3±0.2	3.4 ⁺⁰	1.8
SCDS74	7.3±0.2	7.3±0.2	4.5 ⁺⁰	1.8

Recommended Pattern



Dimension in mm

TYPE	A	B	C
SCDS73	8.4	4.4	2.2
SCDS74	8.4	4.4	2.2