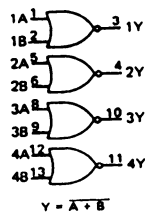
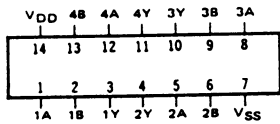
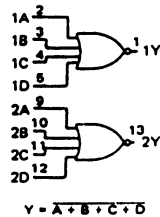
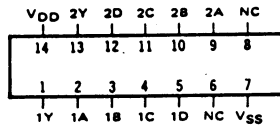


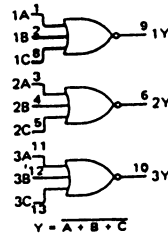
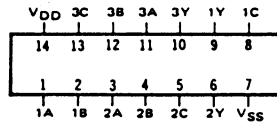
**SCL4001B**  
QUAD TWO-INPUT NOR GATE



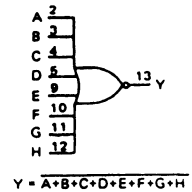
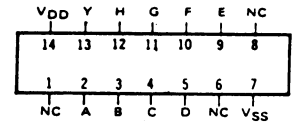
**SCL4002B**  
DUAL FOUR INPUT NOR GATE



**SCL4025B**  
TRIPLE THREE INPUT NOR GATE



**SCL4078B**  
EIGHT INPUT NOR GATE



**STATIC CHARACTERISTICS: (  $V_{SS} = 0 V$  )**

PARAMETER	CONDITIONS	$V_{DD}$ (Vdc)	$T_{LOW}^*$		+25°C			$T_{HIGH}^{**}$		UNIT
			MIN	MAX	MIN	TYP	MAX	MIN	MAX	
QUIESCENT DEVICE CURRENT $I_{DD}$	$V_{IN} = V_{SS}$ OR $V_{DD}$	5		0.05		0.0005	0.05		1.5	$\mu A_{dc}$
		10		0.1		0.001	0.1		3.0	
		15		0.2		0.002	0.2		6.0	

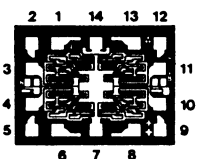
Note: \*  $T_{LOW} = -55^{\circ}C$  for C / H devices,  $-40^{\circ}C$  for E / S devices, \*\*  $T_{HIGH} = +125^{\circ}C$  for C / H devices,  $+85^{\circ}C$  for E / S devices.

**DYNAMIC CHARACTERISTICS: (  $C_L = 50pF, T_A = 25^{\circ}C$  )**

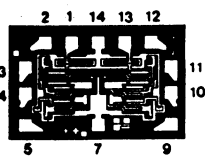
PARAMETER	$V_{DD}$ Vdc	MINIMUM	TYPICAL	MAXIMUM	UNIT
PROPAGATION DELAY TIME $t_{PLH}, t_{PHL}$	5		125	250	ns
	10		60	120	
	15		45	90	
OUTPUT TRANSITION TIME $t_{TLH}, t_{THL}$	5		100	200	ns
	10		50	100	
	15		40	80	

**DIE DRAWINGS**

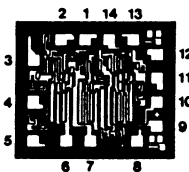
SCL4001B  
50 x 37 mils



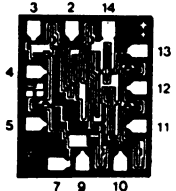
SCL4002B  
56 x 37 mils



SCL4025B  
51 x 44 mils



SCL4078B  
41 x 50 mils



Note: Refer to "SCL4000B SERIES FAMILY SPECIFICATIONS" for remaining Dynamic & Static Characteristics, and, for recommended and maximum operating conditions.