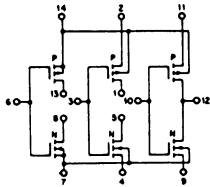
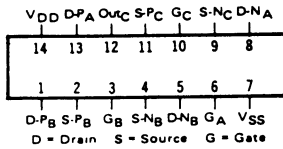


# SCL4007UB

DUAL COMPLEMENTARY PAIR PLUS INVERTER



## STATIC CHARACTERISTICS: ( $V_{SS} = 0 V$ )

PARAMETER	CONDITIONS	$V_{DD}$ (Vdc)	$T_{LOW}^*$		+ 25°C			$T_{HIGH}^{**}$		UNIT
			MIN	MAX	MIN	TYP	MAX	MIN	MAX	
QUIESCENT DEVICE CURRENT $I_{DD}$	$V_{IN} = V_{SS}$ OR $V_{DD}$	5		0.05		0.0005	0.05		1.5	$\mu A_{dc}$
		10		0.1		0.001	0.1		3.0	
		15		0.2		0.002	0.2		6.0	

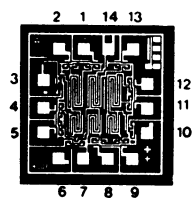
Note: \* $T_{LOW}$  = -55°C for C / H devices, -40°C for E / S devices, \*\* $T_{HIGH}$  = +125°C for C / H devices, +85°C for E / S devices.

## DYNAMIC CHARACTERISTICS: ( $C_L = 50pF, T_A = 25^\circ C$ )

PARAMETER	$V_{DD}$ Vdc	MINIMUM	TYPICAL	MAXIMUM	UNIT
PROPAGATION DELAY TIME $t_{PLH}, t_{PHL}$	5		55	110	ns
	10		30	60	
	15		25	50	
OUTPUT TRANSITION TIME $t_{TLH}, t_{THL}$	5		100	200	ns
	10		50	100	
	15		40	80	

## DIE DRAWING

SCL4007UB  
48 x 50 mils



Note: Refer to "SCL4000B SERIES FAMILY SPECIFICATIONS" for remaining Dynamic & Static Characteristics, and, for recommended and maximum operating conditions.