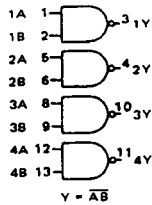
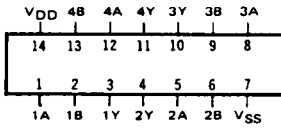


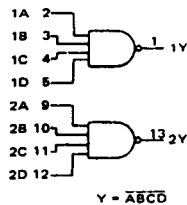
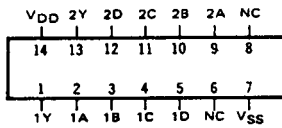
SCL4011B

QUAD TWO-INPUT NAND GATE



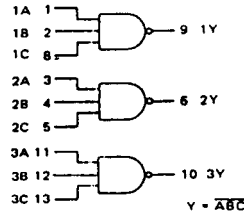
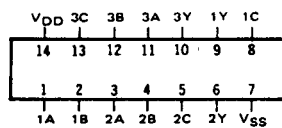
SCL4012B

DUAL FOUR INPUT NAND GATE



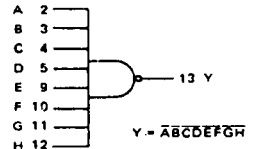
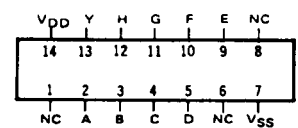
SCL4023B

TRIPLE THREE INPUT NAND GATE



SCL4068B

EIGHT INPUT NAND GATE



STATIC CHARACTERISTICS: (V_{SS} = 0 V)

PARAMETER	CONDITIONS	V _{DD} (V _{dc})	T _{LOW} *		+25°C			T _{HIGH} **		UNIT
			MIN	MAX	MIN	TYP	MAX	MIN	MAX	
QUIESCENT DEVICE CURRENT I _{DD}	V _{IN} = V _{SS} OR V _{DD}	5		0.05		0.0005	0.05		1.5	μA _{dc}
		10		0.1		0.001	0.1		3.0	
		15		0.2		0.002	0.2		6.0	

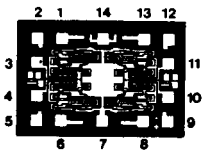
Note: *T_{LOW} = -55°C for C / H devices, -40°C for E / S devices, **T_{HIGH} = +125°C for C / H devices, +85°C for E / S devices.

DYNAMIC CHARACTERISTICS: (CL = 50pF, TA = 25°C)

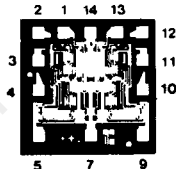
PARAMETER	V _{DD} V _{dc}	MINIMUM	TYPICAL	MAXIMUM	UNIT
PROPAGATION DELAY TIME t _{PLH} , t _{PHL}	5		125	250	ns
	10		60	120	
	15		45	90	
OUTPUT TRANSITION TIME t _{TLH} , t _{THL}	5		100	200	ns
	10		50	100	
	15		40	80	

DIE DRAWINGS

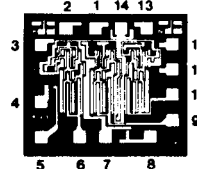
SCL4011B
53 x 37 mils



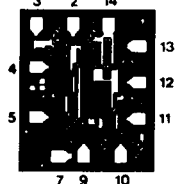
SCL4012B
43 x 43 mils



SCL4023B
53 x 46 mils



SCL4068B
48 x 52 mils



Note: Refer to "SCL4000B SERIES FAMILY SPECIFICATIONS" for remaining Dynamic & Static Characteristics, and, for recommended and maximum operating conditions.