

Schottky Barrier Diode

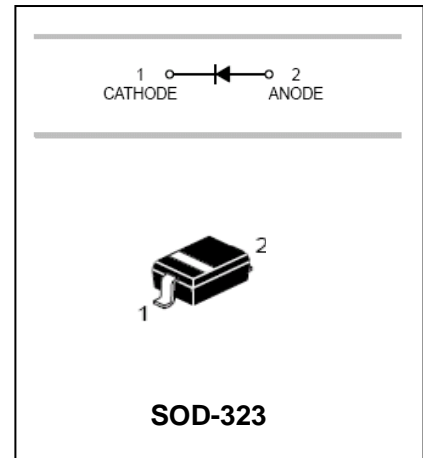
SD101AWS/SD101BWS/SD101CWS

FEATURES

- Low Forward Voltage Drop
- Guard Ring Construction For Transient Protection.
- Negligible Reverse Recovery Time
- Low reverse capacitance
- Ultra-small surface mount package



Lead-free



APPLICATIONS

- Schottky barrier switching.

ORDERING INFORMATION

Type No.	Marking	Package Code
SD101AWS	S1	SOD-323
SD101BWS	S2	SOD-323
SD101CWS	S3	SOD-323

MAXIMUM RATING @ Ta=25°C unless otherwise specified

Parameter	Symbol	SD101AWS	SD101BWS	SD101CWS	Unit
Peak Repetitive reverse voltage	V_{RRM}				
Working Peak reverse voltage	V_{RWM}	60	50	40	V
DC Reverse Voltage	V_R				
RMS Reverse Voltage	$V_{R(RMS)}$	42	35	28	V
Forward Continuous Current	I_F	15			mA
Repetitive Peak Forward Current @t<1.0s @t=10μs	I_{FRM}	50			mA
		2.0			A
Power Dissipation	P_d	200			mW
Thermal Resistance Junction to Ambient	$R_{\theta JA}$	625			°C/W
Storage temperature	T_{stg}	-65 to+125			°C

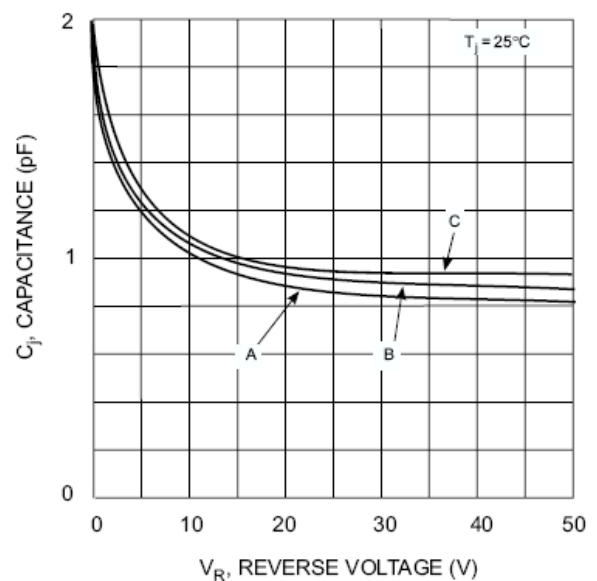
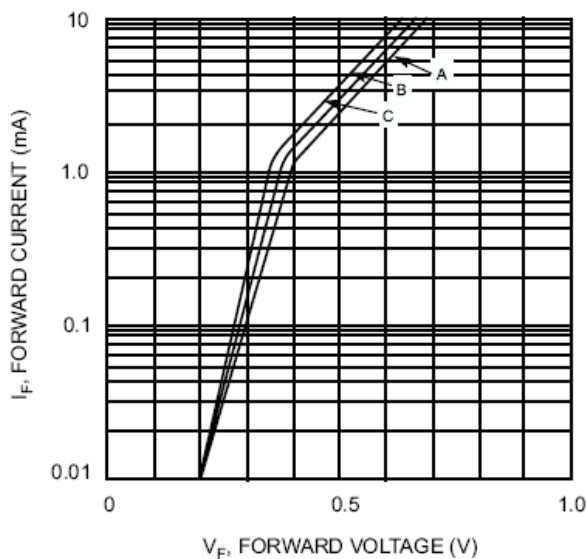
Schottky Barrier Diode

SD101AWS/SD101BWS/SD101CWS

ELECTRICAL CHARACTERISTICS @ Ta=25°C unless otherwise specified

Parameter	Symbol	Min.	Typ.	Max.	Unit	Conditions
Reverse Breakdown Voltage	SD101AWS SD101BWS SD101CWS	60 50 40			V	I _R =10μA I _R =10μA I _R =10μA
Forward voltage	SD101AWS SD101BWS SD101CWS SD101AWS SD101BWS SD101CWS			0.41 0.40 0.39 1.00 0.95 0.90	V	I _F =1.0mA I _F =1.0mA I _F =1.0mA I _F =15mA I _F =15mA I _F =15mA
Reverse current	SD101AWS SD101BWS SD101CWS			0.2	μA	V _R =50V V _R =40V V _R =30V
Capacitance between terminals	SD101AWS SD101BWS SD101CWS			2.0 2.1 2.2	pF	V _R =0, f=1MHz
Reverse Recovery Time				1.0	ns	I _R =I _F =5mA I _{rr} =0.1*I _R , R _L =100Ω

TYPICAL CHARACTERISTICS @ Ta=25°C unless otherwise specified



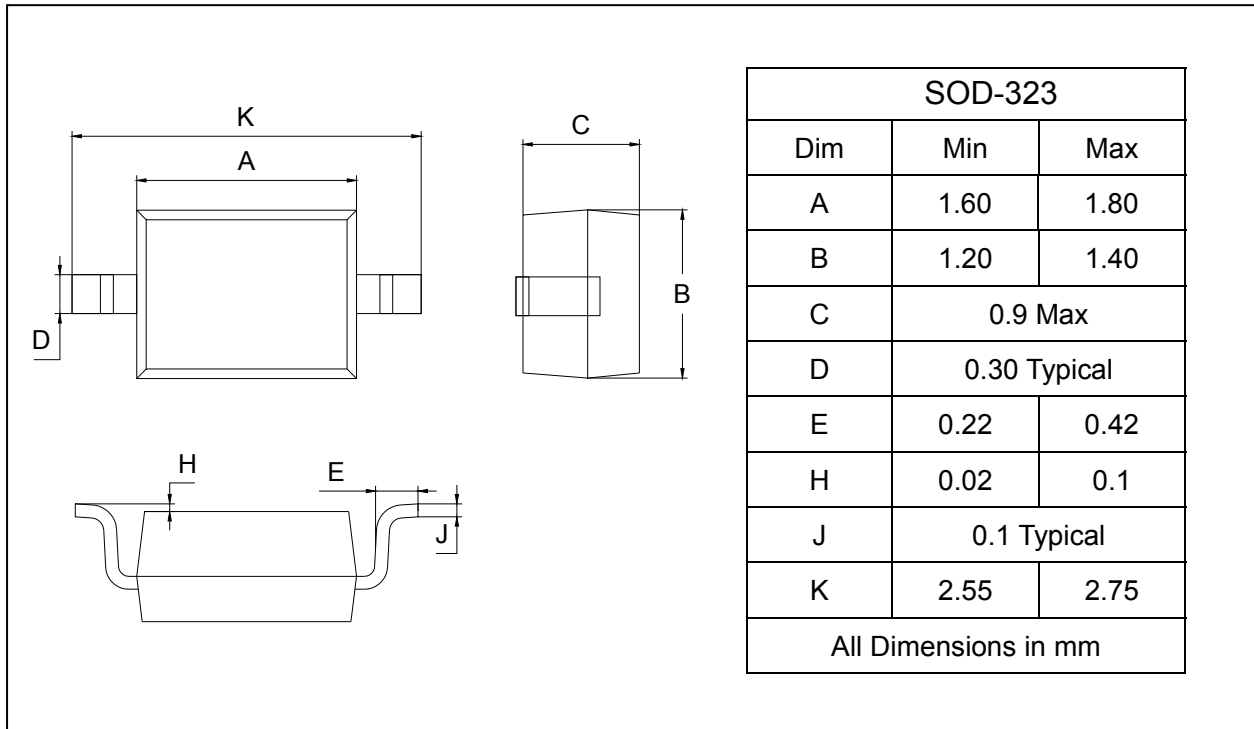
Schottky Barrier Diode

SD101AWS/SD101BWS/SD101CWS

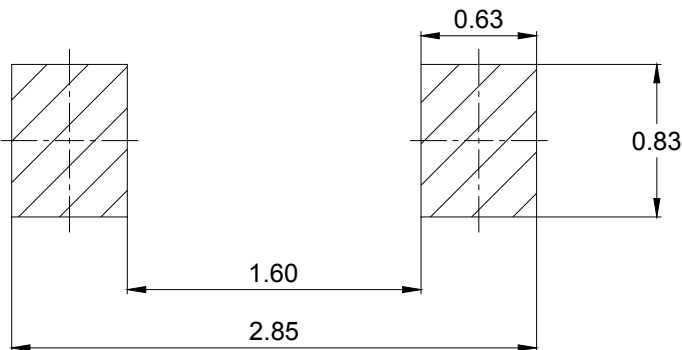
PACKAGE OUTLINE

Plastic surface mounted package

SOD-323



SOLDERING FOOTPRINT



Unit : mm

PACKAGE INFORMATION

Device	Package	Shipping
SD101AWS-SD101CWS	SOD-323	3000/Tape&Reel