

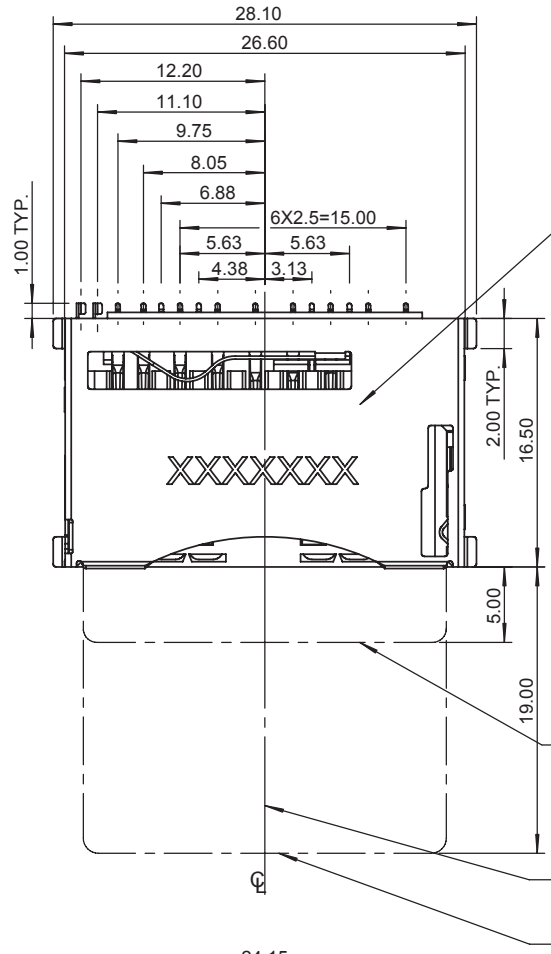
機密文件

REV.	MODIFICATION	DRAWN	APPROVED

- NOTES :
- MATERIAL :  
INSULATOR : HIGH TEMPERATURE THERMOPLASTIC  
FLAMMABILITY RATING : UL94V-0  
COLOR: BLACK  
CONTACT : COPPER ALLOY  
COVER : COPPR ALLOY
  - CONTACT AREA PLATING : GOLD OVER Ni
  - COPLANARITY:0.10mm MAX.
  - WP :WRITE PROTECT  
CD :CARD DETECT INDICATION
  - P/N : SDC013 - X 0 - 5 0 X E

0.Tray PACKING  
1.T&R PACKING

UN LEAD PLATING:  
A : GOLD FLASH  
C : 10u" GOLD

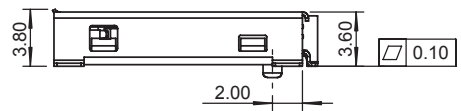
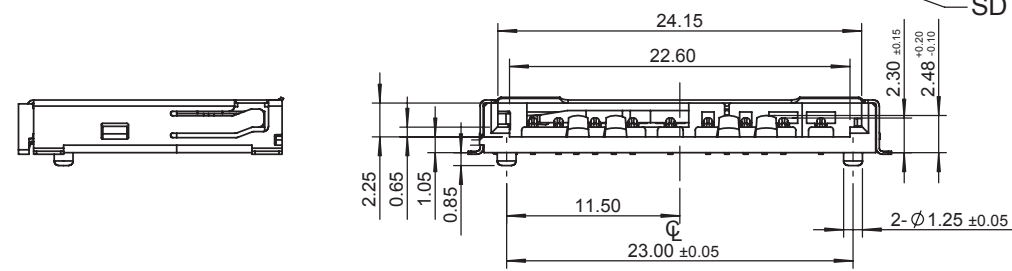
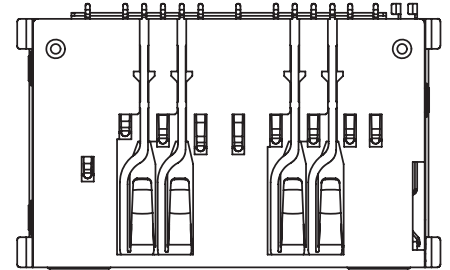


LOGO/DATE CODE

4.0 MMC SHORT CARD EDGE

CONNECTOR & CARD CENTER

SD CARD EDGE



GENERAL TOLERANCE	
X ± 0.40	X ° ± 5°
.X ± 0.30	.X ° ± 2°
.XX ± 0.20	.XX ° ± 1°
.XXX ± 0.10	.XXX ° ± 0.5°

Wellco T&C Co., Ltd.

TITLE Mini 5 in 1 CONNECTOR  
SDC/MMC/RS MMC/4.0 MMC/4.0 MMC SHORT



1. THIS PRODUCT DOESN'T CONTAIN ENVIRONMENTAL HAZARDOUS MATERIALS PER DIRECTIVE 2002/95/EC FOR RoHS.  
2. ALL RIGHTS RESERVED, PRODUCTS ARE COVERED BY PATENTS AND/OR PATENTS PENDING.

CUSTOMER DRAWING

PART NO. SDC013-X0-50XE

DWG NO. SDC013-56-A

APPROVAL [Signature]

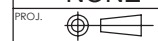
CHECKED [Signature]

DRAWN [Signature]

UNIT mm

SCALE NONE

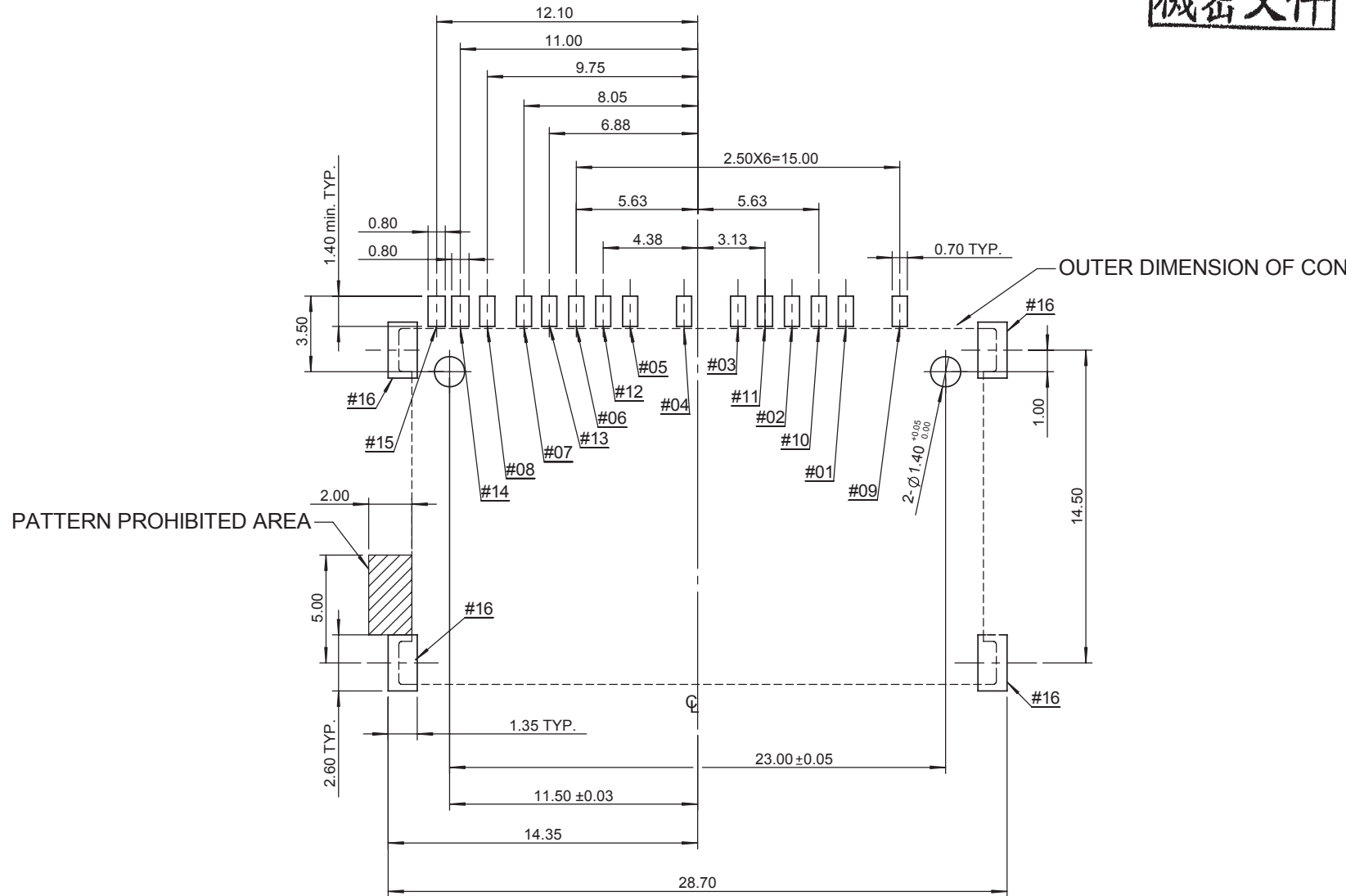
SHEET 1 / 2



REV. A

機密文件

REV.	MODIFICATION	DRAWN	APPROVED
------	--------------	-------	----------



PIN NO.	DESCRIPTION
#01	DAT 3
#02	CMD
#03	VSS
#04	VDD
#05	CLK
#06	VSS 2
#07	DAT 0
#08	DAT 1
#09	DAT 2
#10	DAT 4
#11	DAT 5
#12	DAT 6
#13	DAT 7
#14	CD
#15	WP
#16	GND

RECOMMENEDE P.C.B LAYOUT  
TOLERANCE ±0.05mm

GENERAL TOLERANCE	
X ± 0.40	X ° ± 5°
.X ± 0.30	.X ° ± 2°
.XX ± 0.20	.XX ° ± 1°
.XXX ± 0.10	.XXX ° ± 0.5°

Wellco T&C Co., Ltd.		TITLE	
		Mini 5 in 1 CONNECTOR	
		SDC/MMC/RS MMC/4.0 MMC/4.0 MMC SHORT	



1. THIS PRODUCT DOESN'T CONTAIN ENVIRONMENTAL HAZARDOUS MATERIALS PER DIRECTIVE 2002/95/EC FOR RoHS.  
2. ALL RIGHTS RESERVED, PRODUCTS ARE COVERED BY PATENTS AND/OR PATENTS PENDING.

CUSTOMER DRAWING		PART NO.	DWG NO.	
		SDC013-X0-50XE	SDC013-56-A	
APPROVAL	CHECKED	DRAWN	UNIT	SCALE
<i>[Signature]</i>	<i>[Signature]</i>	<i>[Signature]</i>	mm	NONE
			PROJ.	SHEET
			REV.	2 / 2
				A