

3-WAY POWER DIVIDER

SURFACE MOUNT MODEL: SDL-110

WIDE BANDWIDTH

2 - 200 MHz

FEATURES:

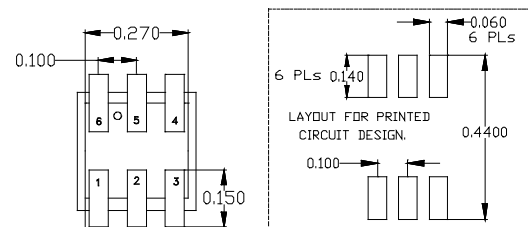
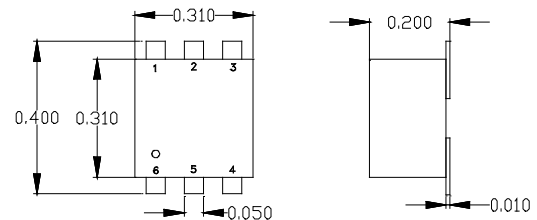
- ▶ Excellent Performance
- ▶ Wide Bandwidth
- ▶ Small Size, Surface Mount
- ▶ Moderate Power
- ▶ Applications: Signal Splitting & Low Power Combining



SPECIFICATIONS (Rev. B 09/28/06)

Frequency	2 - 200 MHz		
Insertion Loss	Freq. (MHz)	dB (Typ.)	dB (Max.)
	2-20	0.6	0.8
	20-100	0.4	0.7
	100-200	0.7	1.0
Isolation	Freq. (MHz)	dB (Typ.)	dB (Min.)
	2-20	40	23
	20-100	32	23
	100-200	32	23
Phase Unbalance	Freq. (MHz)	Degrees (Max.)	
	2-20	3	
	20-100	3	
	100-200	3	
Amplitude Unbalance	Freq. (MHz)	dB (Max.)	
	2-20	0.4	
	20-100	0.3	
	100-200	0.4	
Input Power	1 Watt (Max.)		
Output Impedance	50 Ohms (Nom.)		
Operating Temperature Range	-20 to +70 °C		

Package # 159



PIN-OUT

Input	Output	Case Gnd.
6	1,3,4	2,5

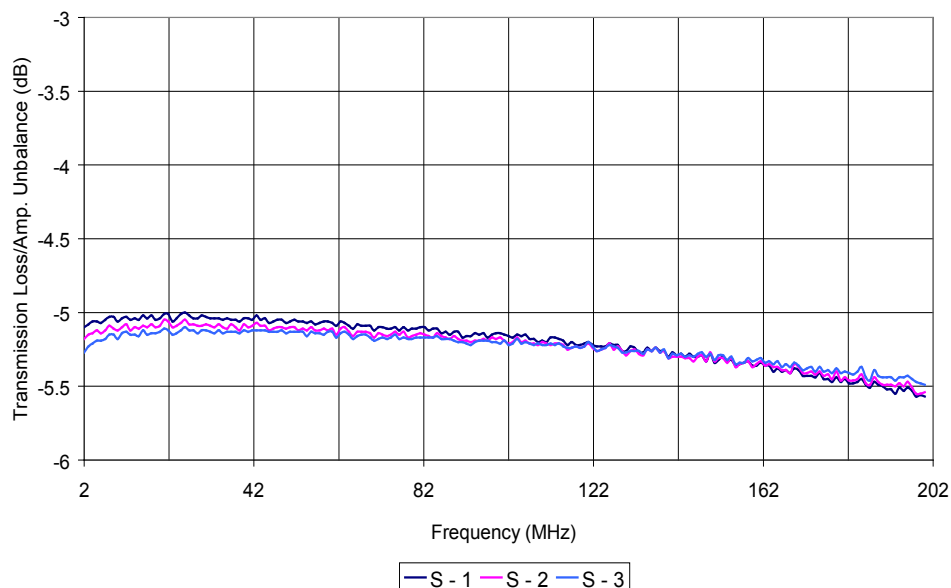
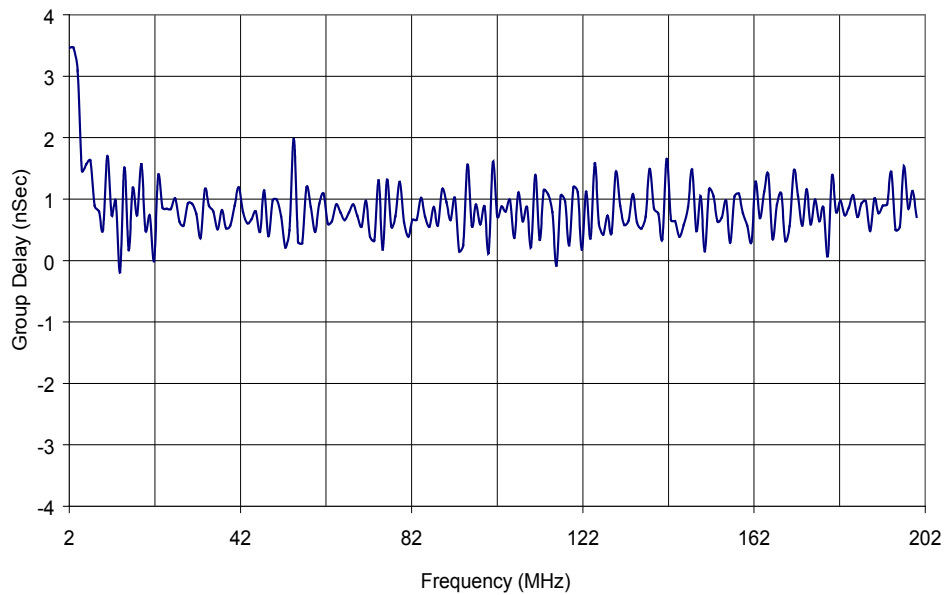
3-WAY POWER DIVIDER

SURFACE MOUNT MODEL: SDL-110

WIDE BANDWIDTH

2 - 200 MHz

PERFORMANCE PLOTS



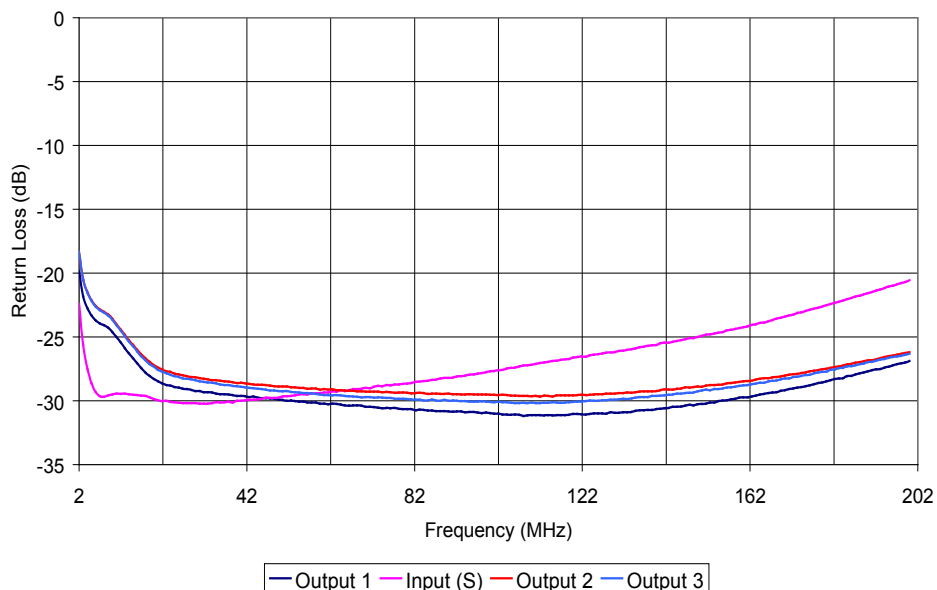
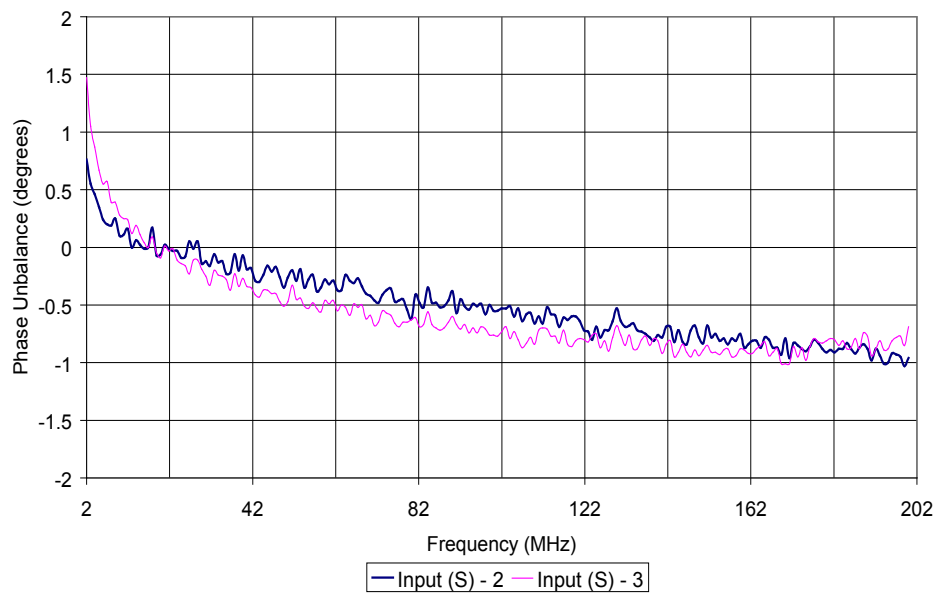
3-WAY POWER DIVIDER

SURFACE MOUNT MODEL: SDL-110

WIDE BANDWIDTH

2 - 200 MHz

PERFORMANCE PLOTS

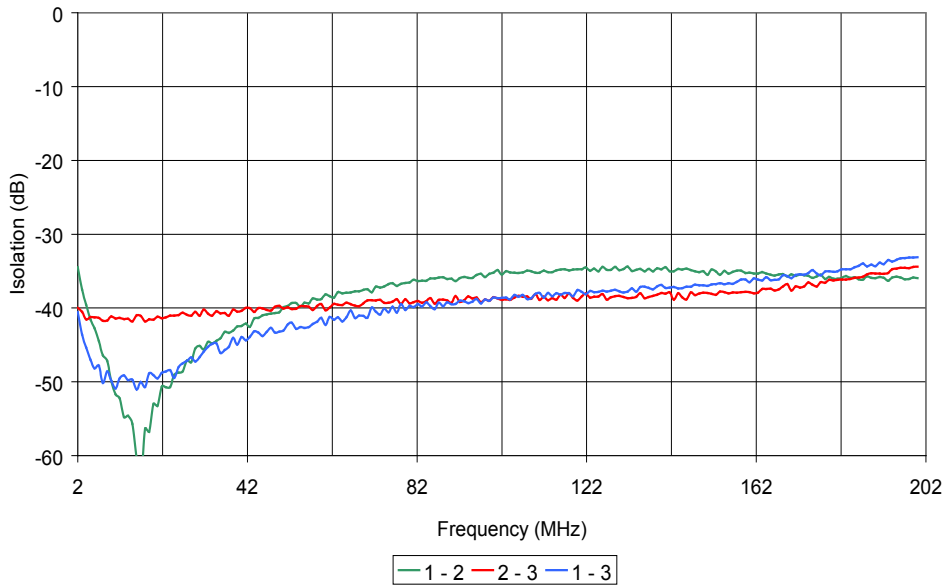


3-WAY POWER DIVIDER

SURFACE MOUNT MODEL: SDL-110

WIDE BANDWIDTH

2 - 200 MHz



PERFORMANCE PLOTS

