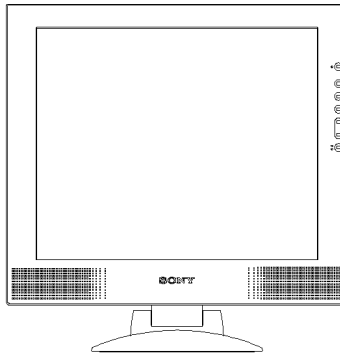


SDM-M81

SERVICE MANUAL

*US Model
Canadian Model
AEP Model*



SPECIFICATIONS

LCD panel	Panel type: a-Si TFT Active Matrix Picture size: 18.1 inch	Power requirements	100-240 V, 50-60 Hz, Max. 0.9A
Input signal format	RGB operating frequency* Horizontal: 28-92 kHz Vertical: 48-85 Hz	Power consumption	Max. 50W
Resolution	Horizontal: Max. 1280 dots Vertical: Max. 1024 lines	Operating temperature	5-35 °C
Video input connector	Analog RGB: HD15 Digital/analog RGB: DVI-I 29 pins	Dimensions (width/height/depth)	Display (upright): Approx. 439 x 434 x 220 mm (17 $\frac{3}{8}$ x 17 $\frac{1}{8}$ x 8 $\frac{3}{4}$ inches) (with stand)
Input signal levels	Analog RGB video signal: 0.7 Vp-p, 75 Ω , positive SYNC signal: TTL level, 2.2k Ω , Positive or negative (Separate horizontal and vertical, or composite sync) 0.3 Vp-p, 75 Ω , negative (Sync on green) Digital RGB video signal: TMDS (Single link)	Mass	Approx. 439 x 376 x 60 mm (17 $\frac{3}{8}$ x 14 $\frac{7}{8}$ x 2 $\frac{3}{8}$ inches) (without stand)
Audio output	1W x 2	Plug & Play	Approx. 7.3 kg (16 lb 1 oz) (with stand)
Headphones jack	Stereo minijack Accepts impedance of 16-48 Ω		DCC2B
Audio in jack	Stereo minijack x 2 Accepts impedance of 47 k Ω Accepts level 0.5 Vrms		

* Recommended horizontal and vertical timing condition

- Horizontal sync width duty should be more than 4.8% of total horizontal time or 0.8 μ s, whichever is larger.
- Horizontal blanking width should be more than 2.5 μ sec.
- Vertical blanking width should be more than 450 μ sec.

Design and specifications are subject to change without notice.

TFT LCD COLOR COMPUTER DISPLAY
SONY[®]

TABLE OF CONTENTS

<u>Section</u>	<u>Title</u>	<u>Page</u>
1. GENERAL		1-1
2. DISASSEMBLY		
2-1.	Bezel Assy, and Back Cabinet Removal	2-1
2-2.	TFT Panel and Chassis Removal	2-2
2-3.	Inverter Board Removal	2-3
2-4.	A Board Removal	2-4
3. ADJUSTMENTS		
3-1.	Adjustment (1)	3-1
3-2.	Adjustment (2)	3-2
3-3.	Table (1) & (2)	3-3
3-4.	Timing Specification	3-4
4. SCHEMATIC DIAGRAMS		
4-1.	Note	4-1
4-1.	Block Diagrams	4-2
4-3.	(1) Schematic Diagram of A (a-f) Board	4-3
	(2) Schematic Diagram of H Board	4-11
	(3) Schematic Diagram of J Board	4-12
5. EXPLODED VIEWS		
5-1.	LCD Monitor	5-1
5-2.	Packing Materials	5-2
6. ELECTRICAL PARTS LIST		6-1

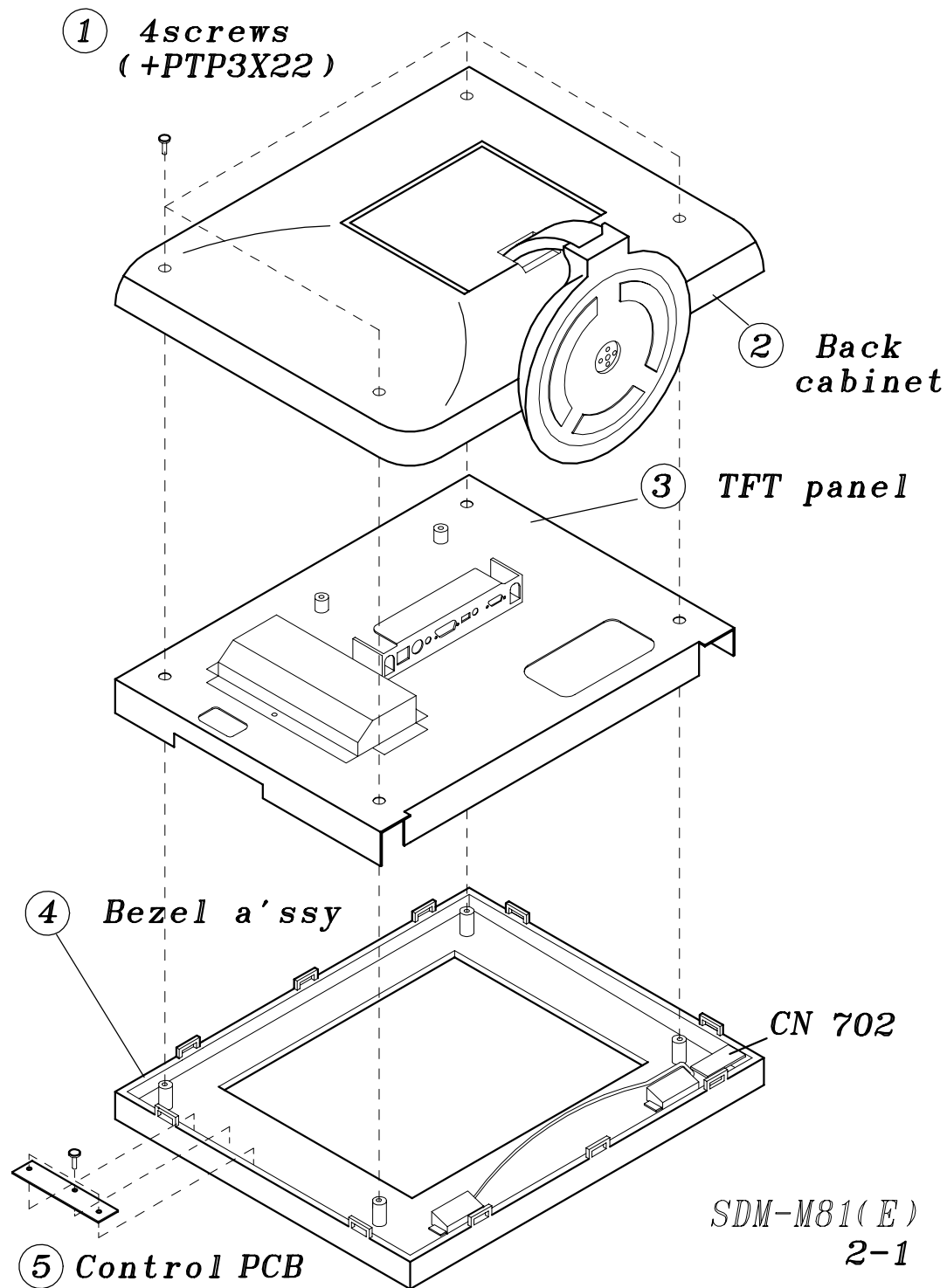
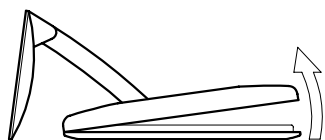
SECTION 2

DISASSEMBLY SDM-M81

2-1 BEZEL ASSY AND BACK CABINET REMOVAL

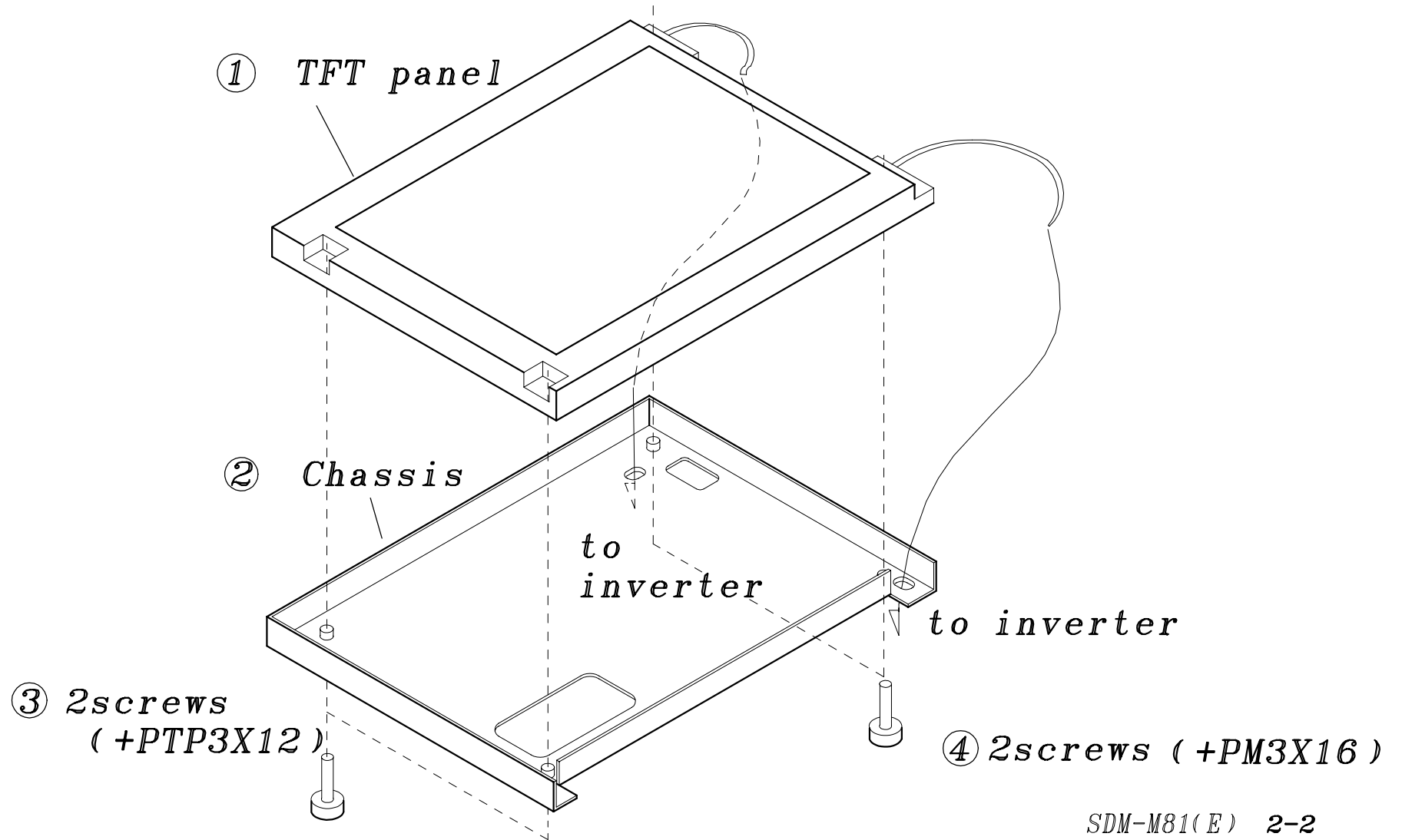
CAUTION:

When remove the back cabinet , please open top side first in order not to interfere connector/switch and cabinet.

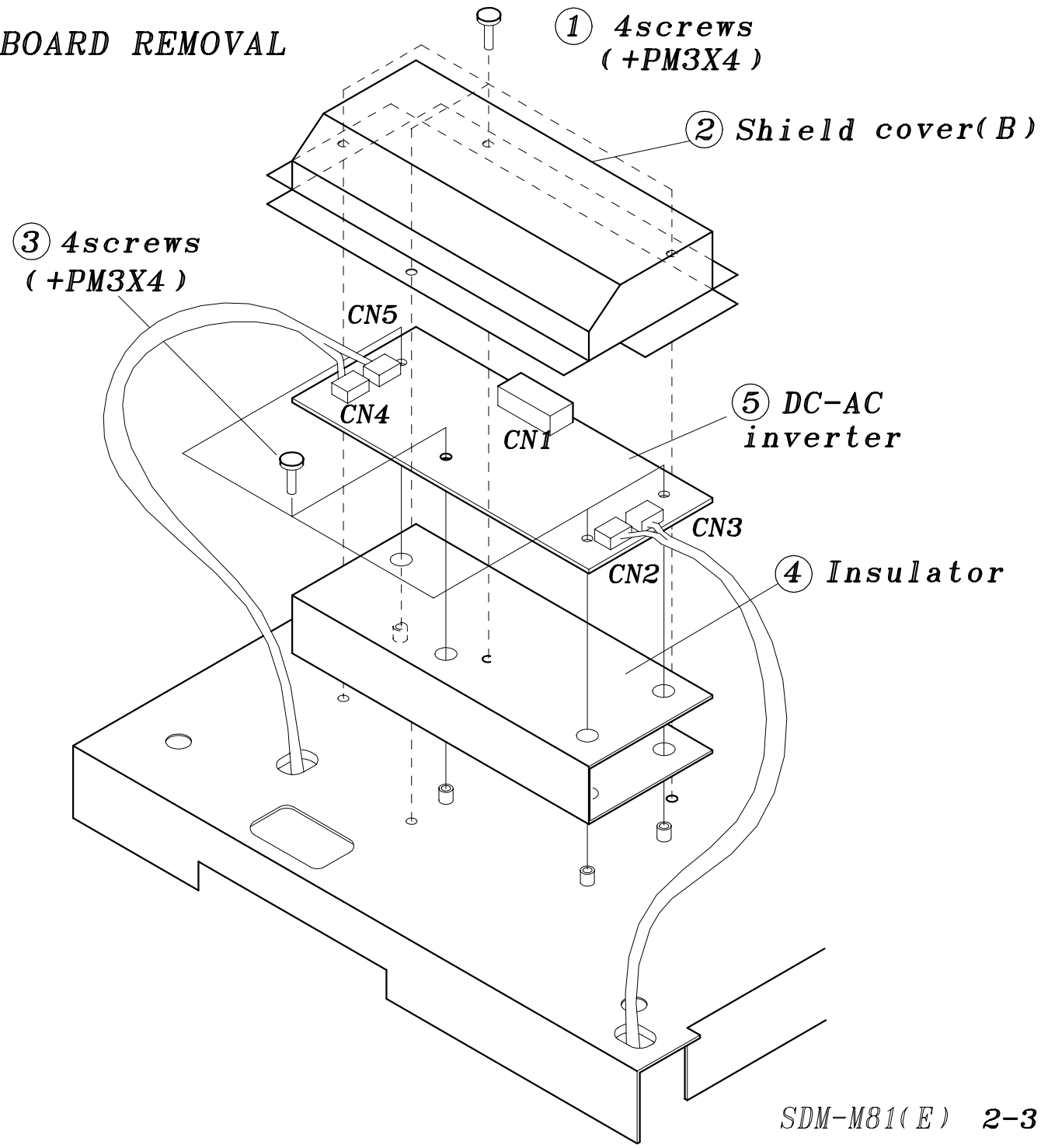


SDM-M81

2-2 TFT PANEL AND CHASSIS REMOVAL



SDM-M81
2-3 INVERTER BOARD REMOVAL

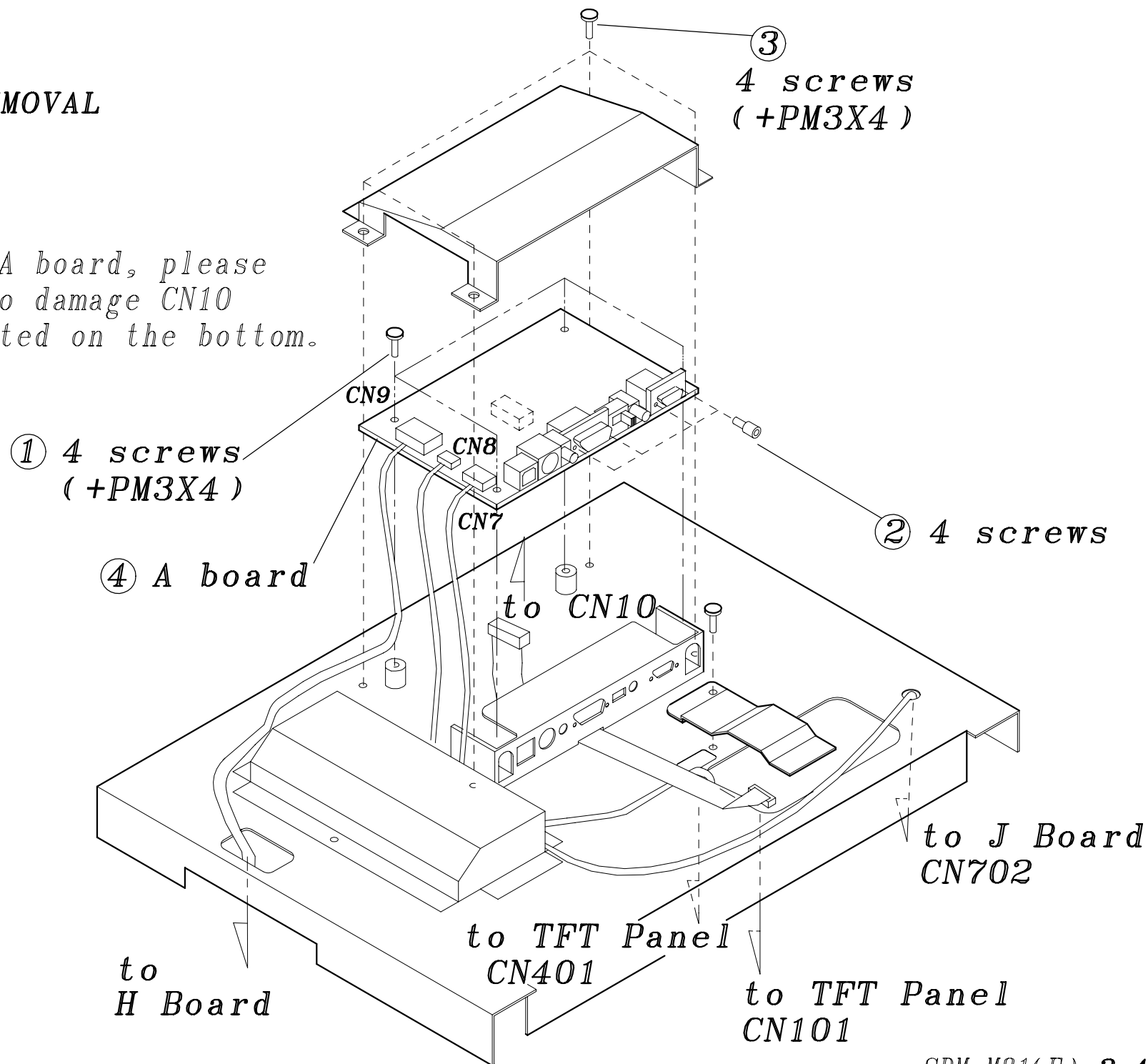


SDM-M81

2-4 A BOARD REMOVAL

CAUTION:

When remove the A board, please be careful not to damage CN10 wires which located on the bottom.



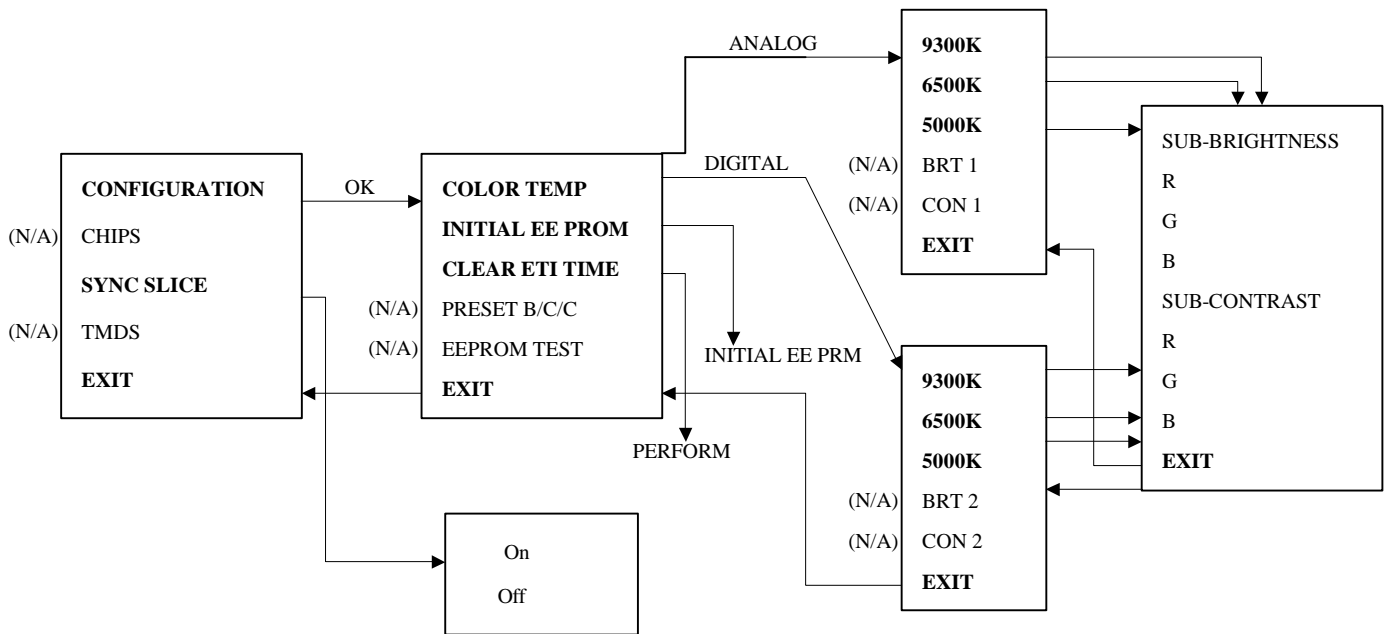
SECTION 3 ADJUSTMENTS

3-1. FUNCTIONAL ALIGNMENT (1)

• **Procedures of how to go to service mode.**

1. Hold “+” and “-” key power on, SDM-M81 goes into service mode.
2. Press “MENU” key -----ODS display.
3. Press “-” key to go to second page’s late icon.
4. Press “OK” key -----service menu display.
5. Select one of features.
6. Press “MENU” key to exit OSD.
7. Power OFF then ON again, monitor go to normal mode.

If you would like to enter service mode again, performing the above procedures cycle.



Note

1. N/A means “Not applied”.
2. This service menu only provides both Configuration & Sync slice functions.
This other were used for design engineering. There is no guarantee of using those N/A functions.

3-2. FUNCTIONAL ALIGNMENT (2)

This paper documents the functional alignment (Used Color meter) procedure of Sony LCD monitor SDM-M81.

• Equipment

Computer: PC workstation with Windows 95 installed
PS/2 mouse is required
Software: KSi Engineering alignment software tool
Color meter: Option
Signal generator: Option
Cable: Special RS232 interface cable

• Setup

1. Copy ECS software <ALIGN.EXE> into a new PC directory.
2. Prepare timing & pattern data for signal generator according to Sony's timing specifications.
3. Prepare timing files for <ALIGN.EXE>.
4. Connect monitor interface cable between flat panel monitor and PC com port.
5. Connect monitor video cable to signal generator.
6. Put Topcon 50cm from the monitor; Point it perpendicularly at the center of the display; Achieve the best focus through the eyepiece.
7. Enclose the monitor and Topcon in a light-shield chamber.
8. Set up [SERVICE MODE] of the monitor.

• Download

In order to enhance productivity, a software utility is provided to download default data to LCD monitor. The default data includes color balance data and geometry timing data.

• Operation

1. Execute software <ALIGN.EXE>.
2. Click on 'Setup' menu.
3. Select 'Monitor' type as 'Sony SDM -M81'.
4. Select 'COM PORT' according to hardware connection.
5. Click <OK> to save the new setup configuration.
6. Quit this application and Re-enter to make the new settings effective.

• On Screen Adjustment

1. Click on the 'Monitor' icon; an virtual monitor panel would show up.
2. On entry, the software tries to establish a communication link with the monitor. The monitor internal DACs are read and shown on screen sliders. A 'CONNECT' icon would show up on the lower left corner of the dialog screen.

3. An error message would pop up should communication fail. A 'BREAK' icon would show up on the dialog screen. If this happens, check the hardware setup, communication cable, and the connection.

• Warm up time

Allow 30 minutes warm up time before doing any adjustment.

• Color Adjustment

1. 9300K color adjustment
--Center adjustment--
 - a. Click 'Color Temperature' as '9300'.
 - b. Apply 40% IRE white video field, primary mode.
 - c. Make sure 'backlight' register data is 0 (100%).
 - d. Click 'Refresh'.
Refer to table 1 for default data for color adjustment.
 - e. Adjust 'sub_brt_B' to achieve color temperature.
Refer to table 2 for specification.
 - f. Click 'Save this color' for a 9300K color save.
2. 5000K color adjustment
 - a. Click 'Color Temperature' as '5000'.
 - b. Repeat alignment procedure as 9300 steps b-f.
3. 6500K color adjustment
 - a. Click 'Color Temperature' as '6500'.
 - b. Repeat alignment procedure as 9300 steps b-f.

• Geometry Adjustment

1. Connect the personal computer which has alignment data.
2. Click 'Refresh' (inside Geometry Register Box).
3. Adjust 'Pitch' for optimum screen performance.
4. Adjust 'Phase' for optimum screen performance.
5. Adjust 'H position' to make the screen center horizontally.
6. Adjust 'V position' to make the screen center vertically.
7. Repeat steps 3-6 for best picture performance.
8. Click 'Save Geometry' to perform a user timing mode save.
9. Repeat step 1-7 for each of the user present timings.

Table 1: Default data for analog color adjustment

Color	9300K	6500K	5000K
Brightness (G)	30	30	30
Contrast (G)	140	140	140
Sub-Brt-R	204	218	230
Sub-Brt-B	248	212	182
Sub-Brt-G	200	200	200
Sub-Cont-R	70	70	70
Sub-Cont-B	70	70	70
Sub-Cont-G	70	70	70

Table 2: Specifications for color adjustment

Color	x	y	Y (40% IRE)
9300	283	298	35
6500	314	328	35
5000	345	358	35
Tole	10	10	10

Y: Luminance measurements are in cd/m²

TIMING SPECIFICATION

PRESET MODE	MODE 1	MODE 2	MODE 3	MODE 4	MODE 5	MODE 6	MODE 7	MODE 8
SIGNAL MODE	VESA 60Hz	MAC 13"	VESA 75Hz	VESA 85Hz	VESA 70Hz	VESA 60Hz	VESA 75Hz	VESA 85Hz
RESOLUTION	640 X 480	640 X 480	640 X 480	640 X 480	720 X 400	800 X 600	800 X 600	800 X 600
DOT CLOCK	25.175 MHz	30.240 MHz	31.500 MHz	36.000 MHz	28.350 MHz	40.000 MHz	49.500 MHz	56.250 MHz
HORIZONTAL	usec	usec	usec	usec	usec	usec	usec	usec
H. TOATL	31.778	28.571	26.667	23.111	31.746	26.400	21.333	18.631
H. SYNC	3.813	2.116	2.032	1.556	2.540	3.200	1.616	1.138
H. BP	1.907	3.175	3.810	2.222	3.175	2.200	3.232	2.702
H. ACTIV	25.422	21.164	20.317	17.778	25.397	20.000	16.162	14.222
VERTICAL	msec	msec	msec	msec	msec	msec	msec	msec
V. TOTAL	16.683	15.000	13.333	11.764	14.254	16.579	13.333	11.756
V. SYNC	0.064	0.086	0.080	0.069	0.095	0.106	0.064	0.056
V. BP	1.049	1.114	0.427	0.578	1.079	0.607	0.448	0.503
V. ACTIV	15.253	13.714	12.800	11.093	12.698	15.840	12.800	11.179
H/V POLARITY	N/N	N/N	N/N	N/N	N/P	P/P	P/P	P/P

PRESET MODE	MODE 9	MODE 10	MODE 11	MODE 12	MODE 13	MODE 14	MODE 15	MODE 16
SIGNAL MODE	PMAC 16"	VESA 60Hz	VESA 70Hz	VESA 75Hz	VESA 85Hz	PMAC 19"	MAC	WS
RESOLUTION	832 X 624	1024 X 768	1024 X 768	1024 X 768	1024 X 768	1024 X 768	1152 X 870	1152 X 900
DOT CLOCK	57.285 MHz	65.000 MHz	75.000 MHz	78.750 MHz	94.500 MHz	80.000 MHz	100.000MHz	92.940 MHz
HORIZONTAL	usec	usec	usec	usec	usec	usec	usec	usec
H. TOATL	20.110	20.677	17.707	16.660	14.561	16.600	14.560	16.182
H. SYNC	1.117	2.092	1.813	1.219	1.016	1.200	1.280	1.377
H. BP	3.910	2.462	1.920	2.235	2.201	2.200	1.440	2.087
H. ACTIV	14.524	15.754	13.653	13.003	10.836	12.800	11.520	12.395
VERTICAL	msec	msec	msec	msec	msec	msec	msec	msec
V. TOTAL	13.413	16.666	14.272	13.328	11.765	13.346	13.322	15.163
V. SYNC	0.060	0.124	0.106	0.050	0.044	0.050	0.044	0.065
V. BP	0.744	0.600	0.513	0.466	0.524	0.498	0.568	0.502
V. ACTIV	12.549	15.880	13.599	12.795	11.183	12.749	12.667	14.564
H/V POLARITY	N/N	N/N	N/N	P/P	P/P	N/N	N/N	N/N

PRESET MODE	MODE 17	MODE 18	MODE 19	MODE 20	MODE 21	MODE 22
SIGNAL MODE	WS	VESA 60Hz	VESA 85Hz	VESA 60Hz	VESA 75Hz	VESA 85Hz
RESOLUTION	1152 X 900	1280 X 960	1280 X 960	1280 X 1024	1280 X 1024	1280 X 1024
DOT CLOCK	105.590 MHz	108.000 MHz	148.500 MHz	108.000	135.000	157.500
HORIZONTAL	usec	usec	usec	usec	usec	usec
H. TOATL	13.941	16.667	11.636	15.630	12.504	10.971
H. SYNC	0.909	1.037	1.077	1.037	1.067	1.016
H. BP	1.970	2.889	1.508	2.296	1.837	1.422
H. ACTIV	10.910	11.852	8.620	11.852	9.481	8.127
VERTICAL	msec	msec	msec	msec	msec	msec
V. TOTAL	13.146	16.667	11.764	16.661	13.329	11.761
V. SYNC	0.112	0.050	0.035	0.047	0.038	0.033
V. BP	0.460	0.600	0.547	0.594	0.475	0.483
V. ACTIV	12.547	16.000	11.171	16.005	12.804	11.235
H/V POLARITY	N/N	P/P	P/P	P/P	P/P	P/P

SECTION 4 DIAGRAMS

4-1

SCHEMATIC DIAGRAMS AND PRINTED WIRING BOARDS

NOTE:

*All capacitors are in uF unless otherwise noted.(pF:uuF)

Capacitors without voltage indication are all 50V.

*Indication of resistance, which does not have one for rating electrical power, is as follows.

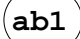
Chip resistor type 0603 1/16W

*All resistors are in ohms.

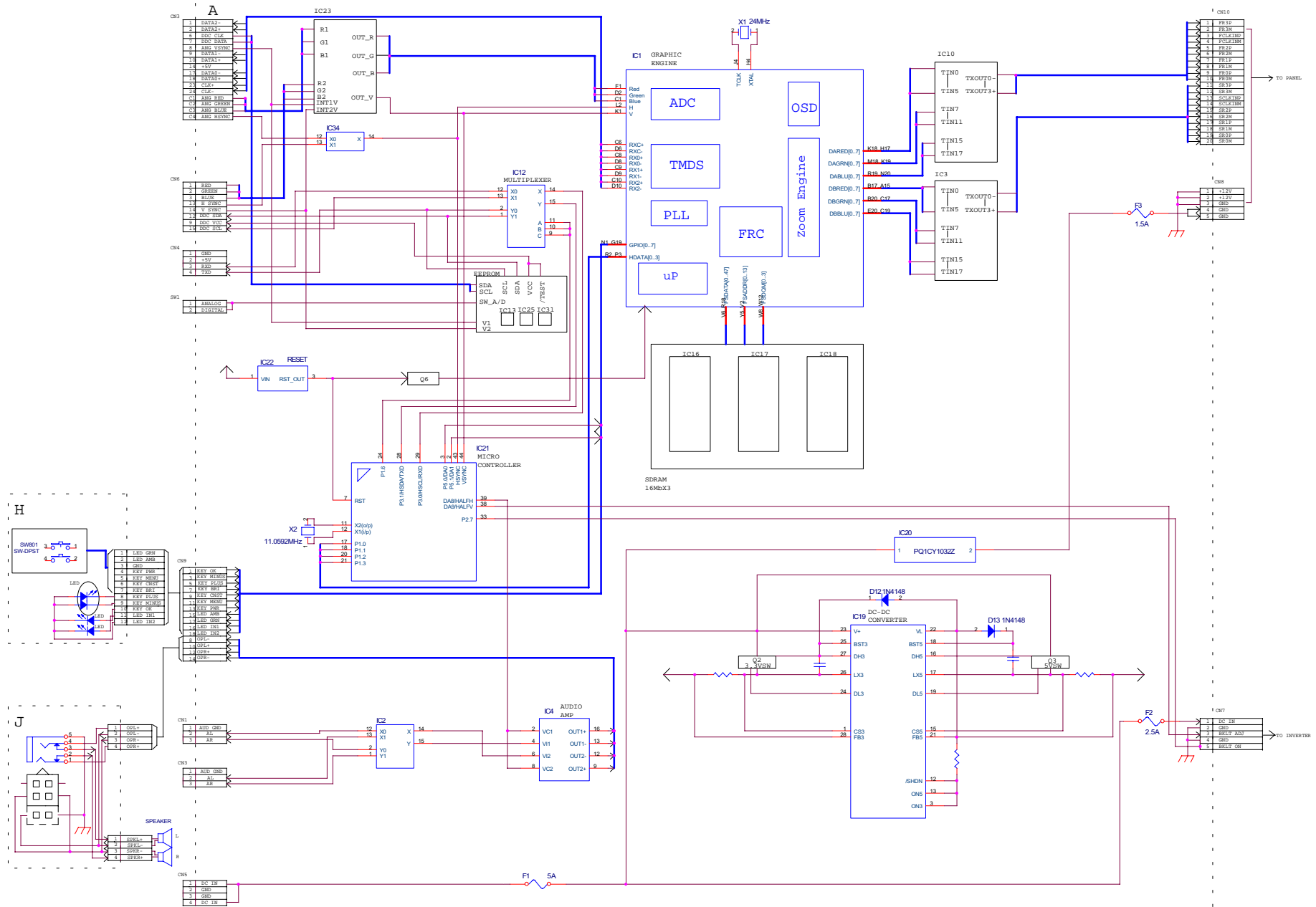
*Resistors with # mark are not mounted.

*The circuit diagram of the A mount is splitted to 6 sheets.(A-a,A-b,>>A-f)

*Circled number shown at edge of each circuit diagram indicates connections between different sheets.

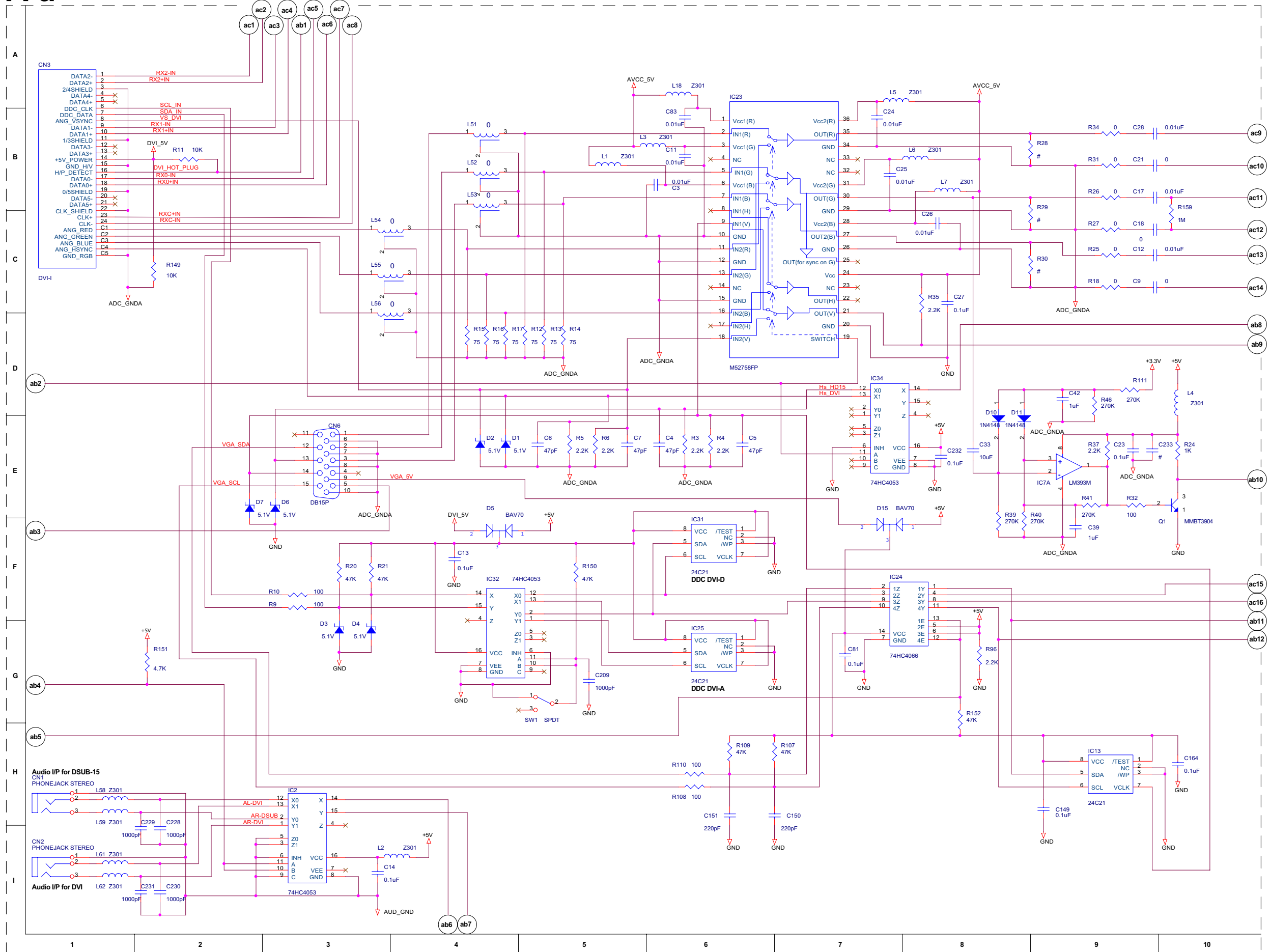
(Example; ) indicate connection between same marking points of sheet A-a and A-b)

4-2.BLOCK DIAGRAMS

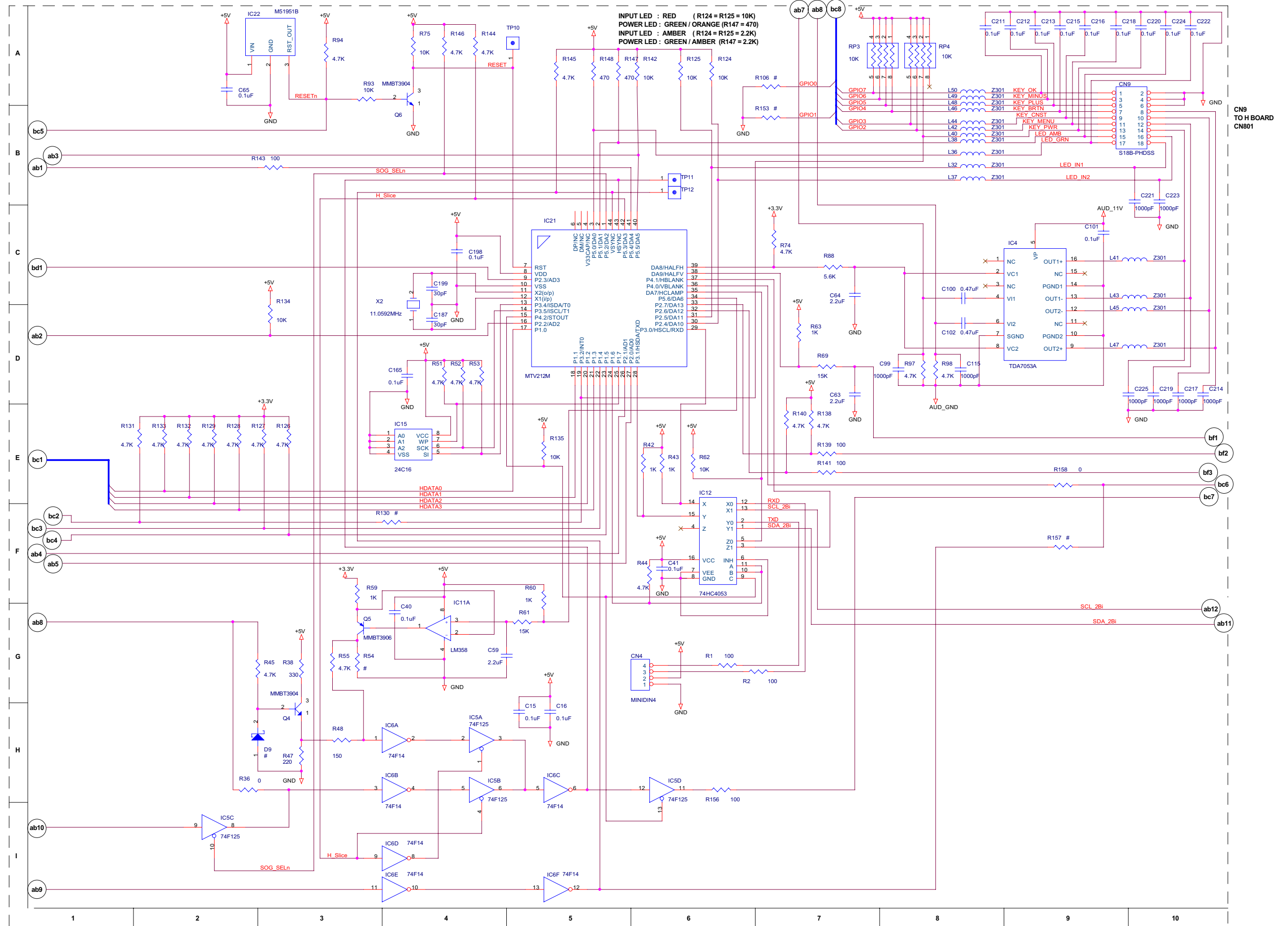


SDM-M81(E)
4-2

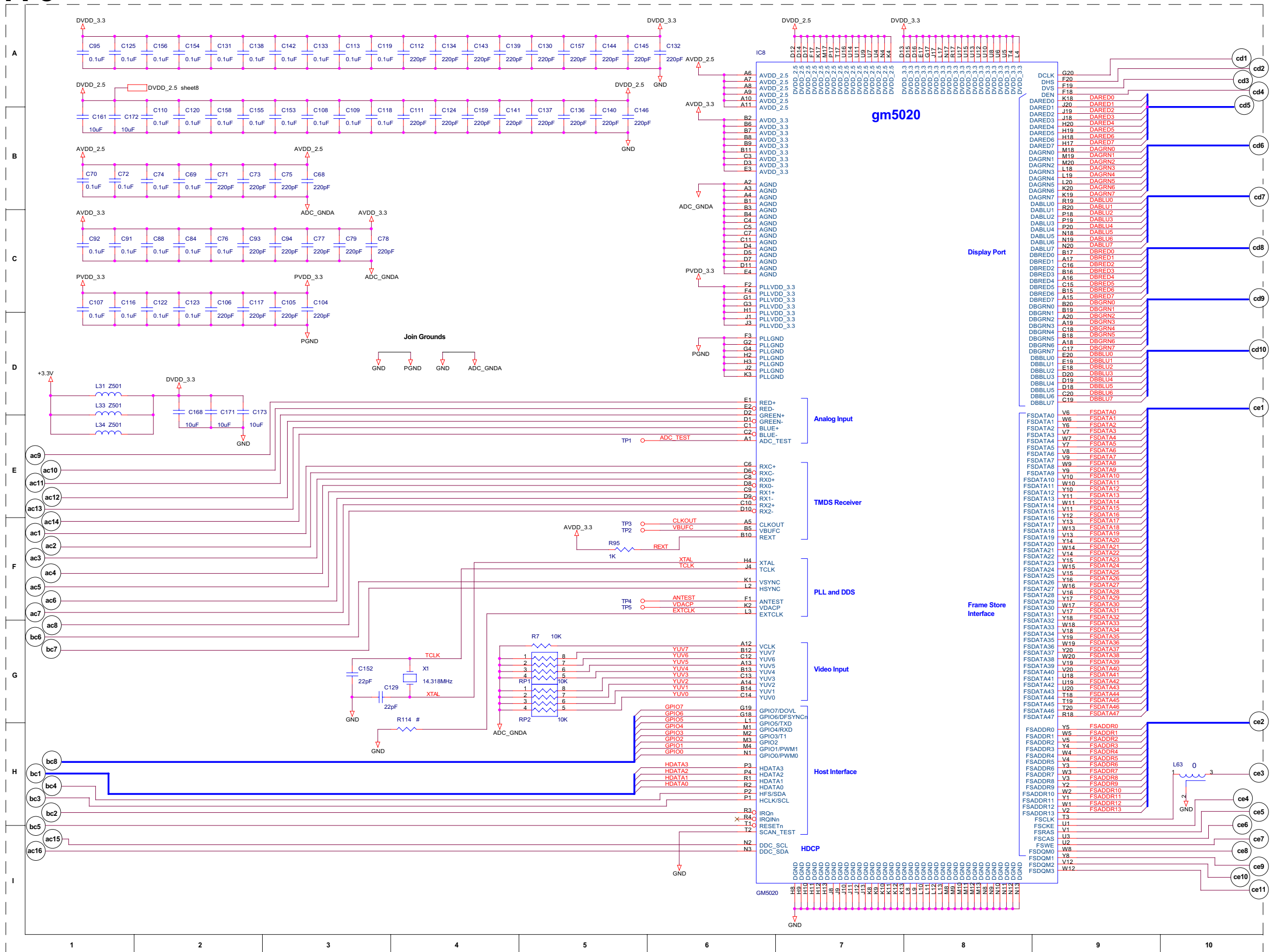
A-a



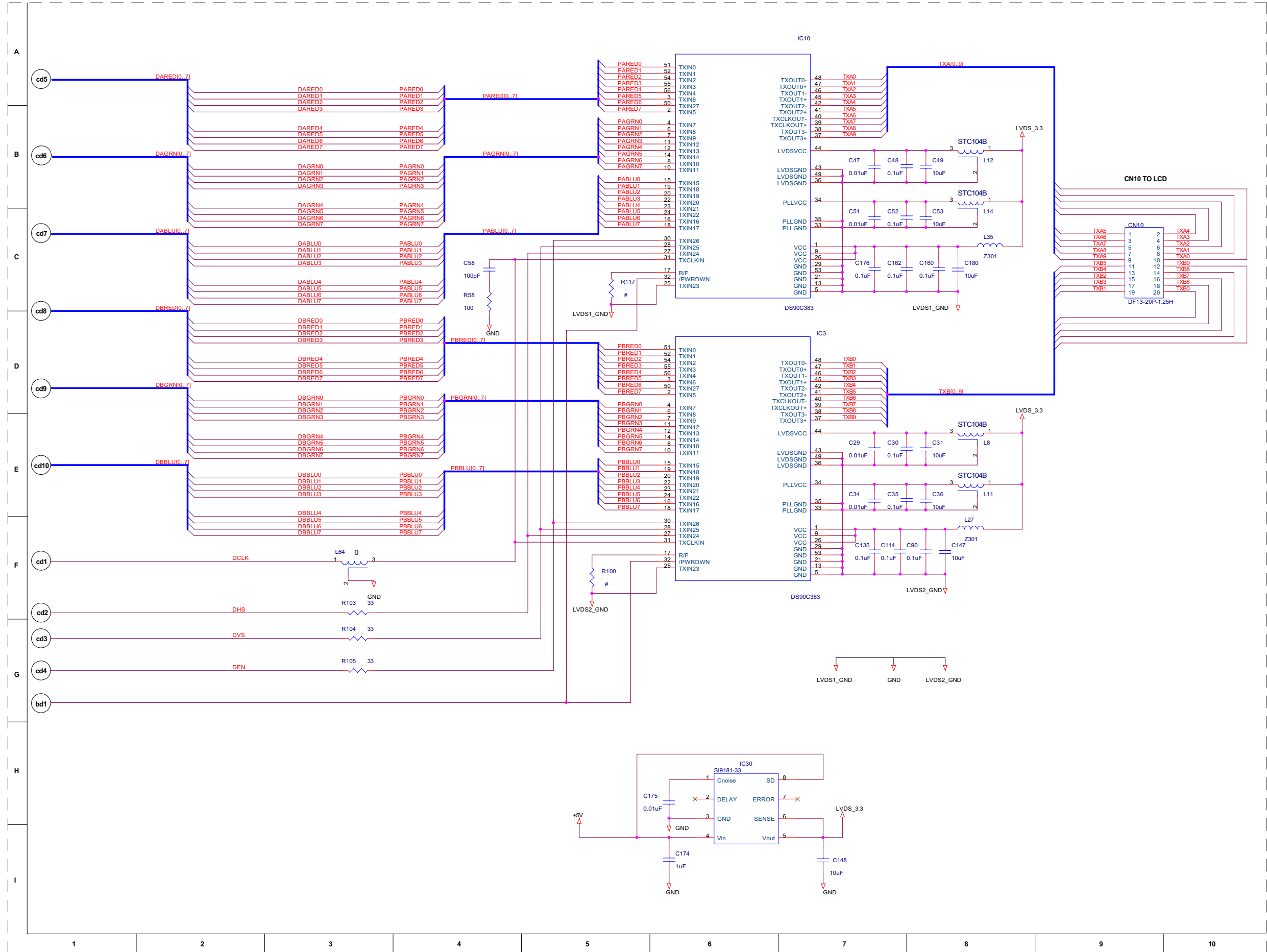
A-b



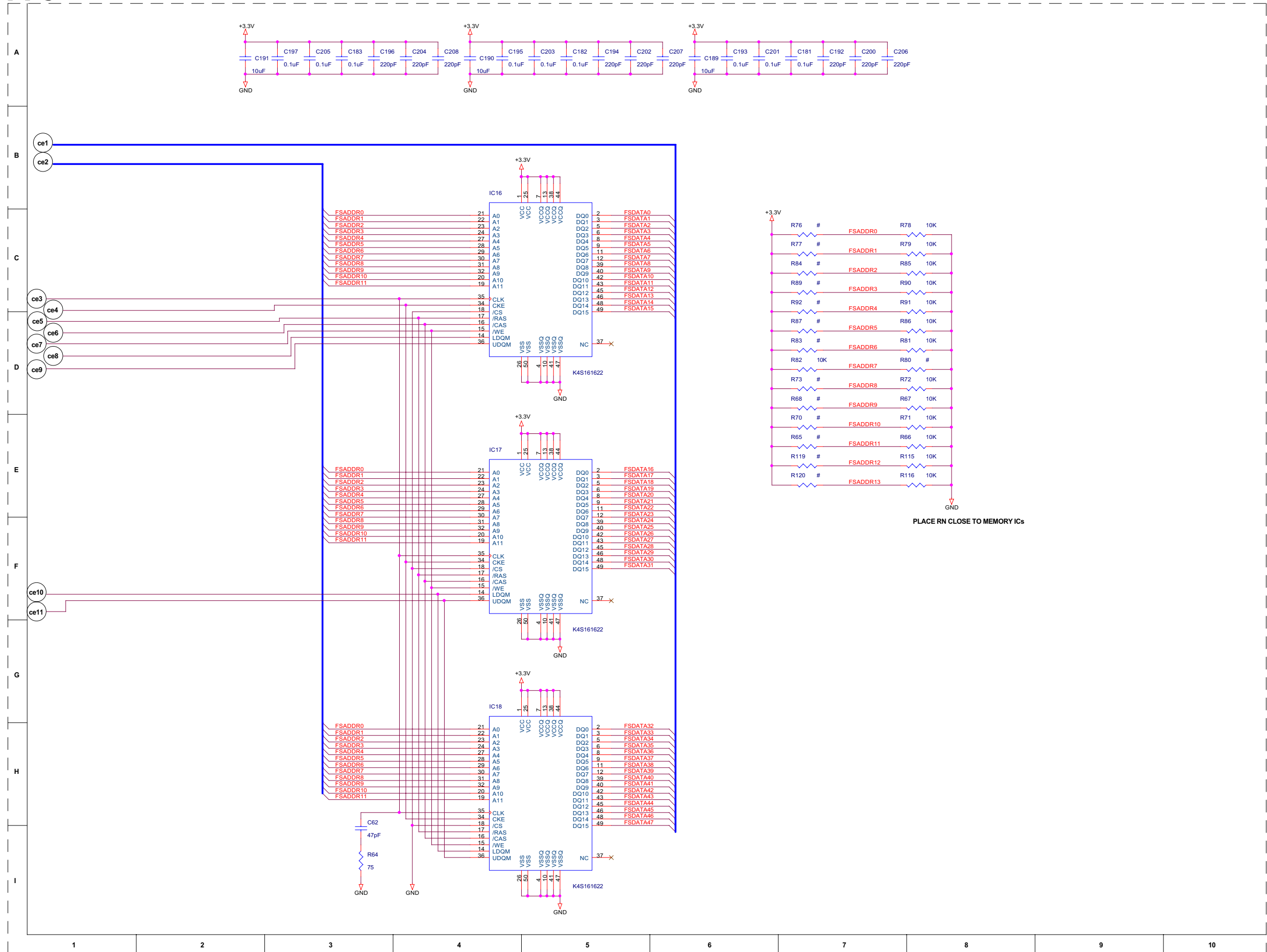
A-c



A-d

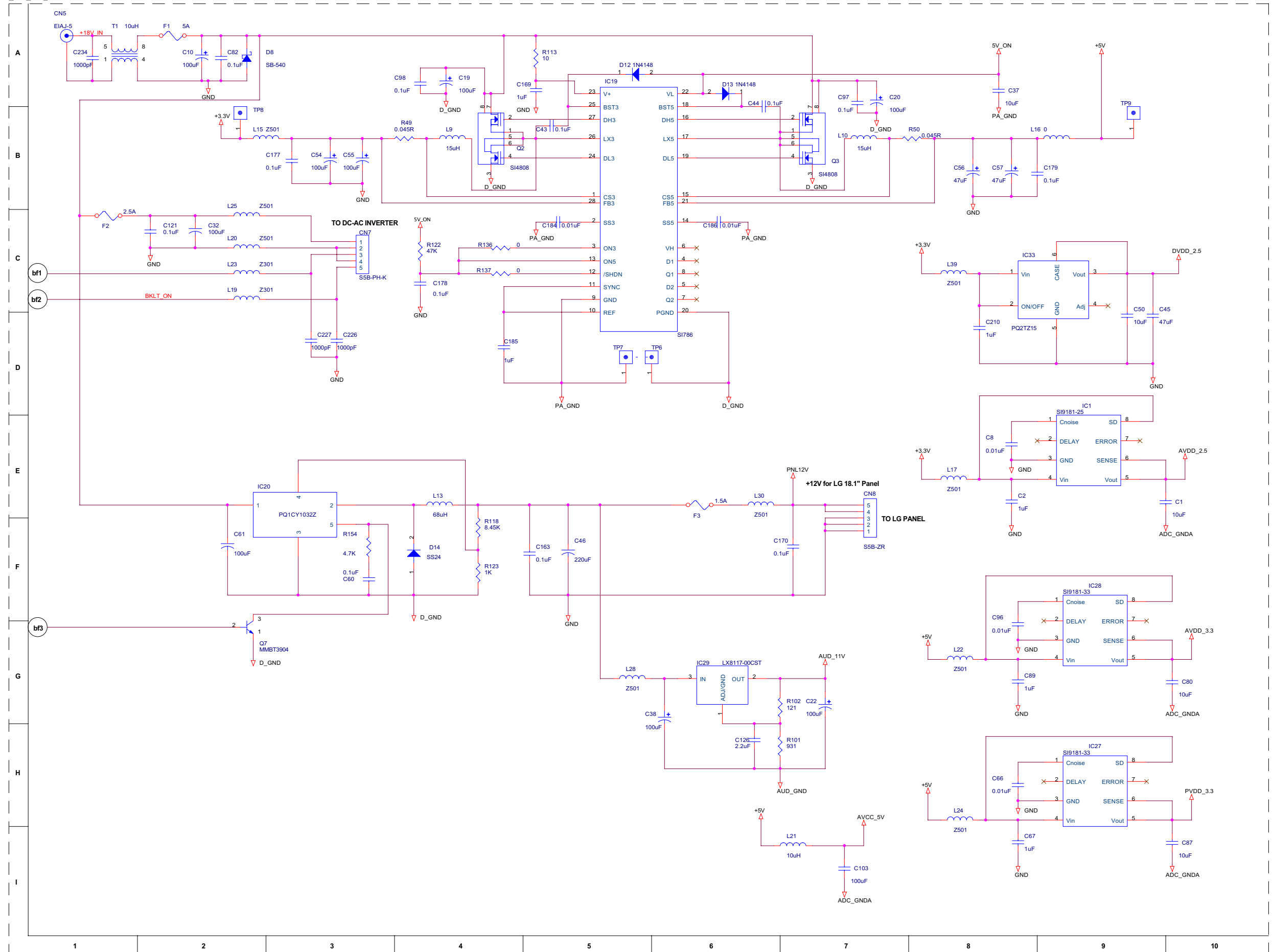


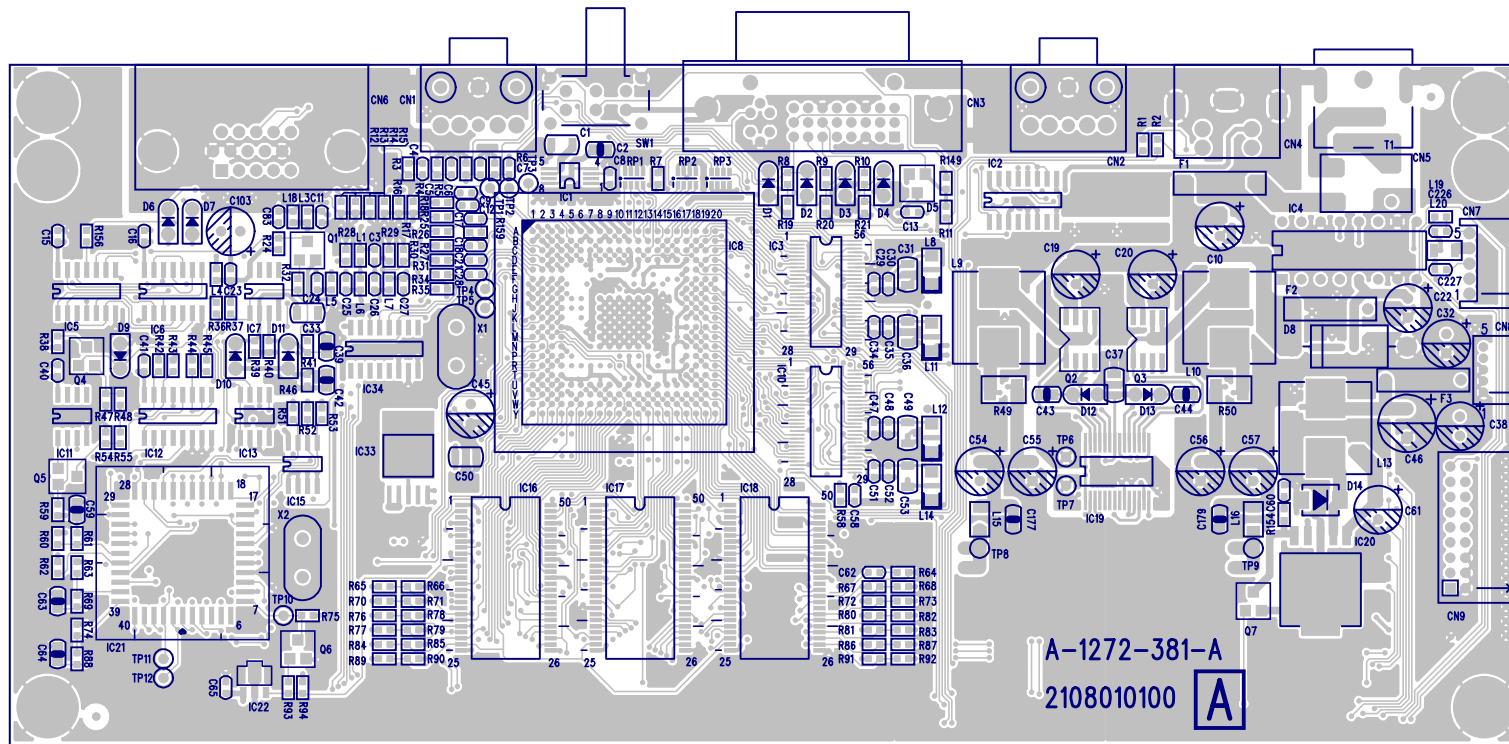
A-e



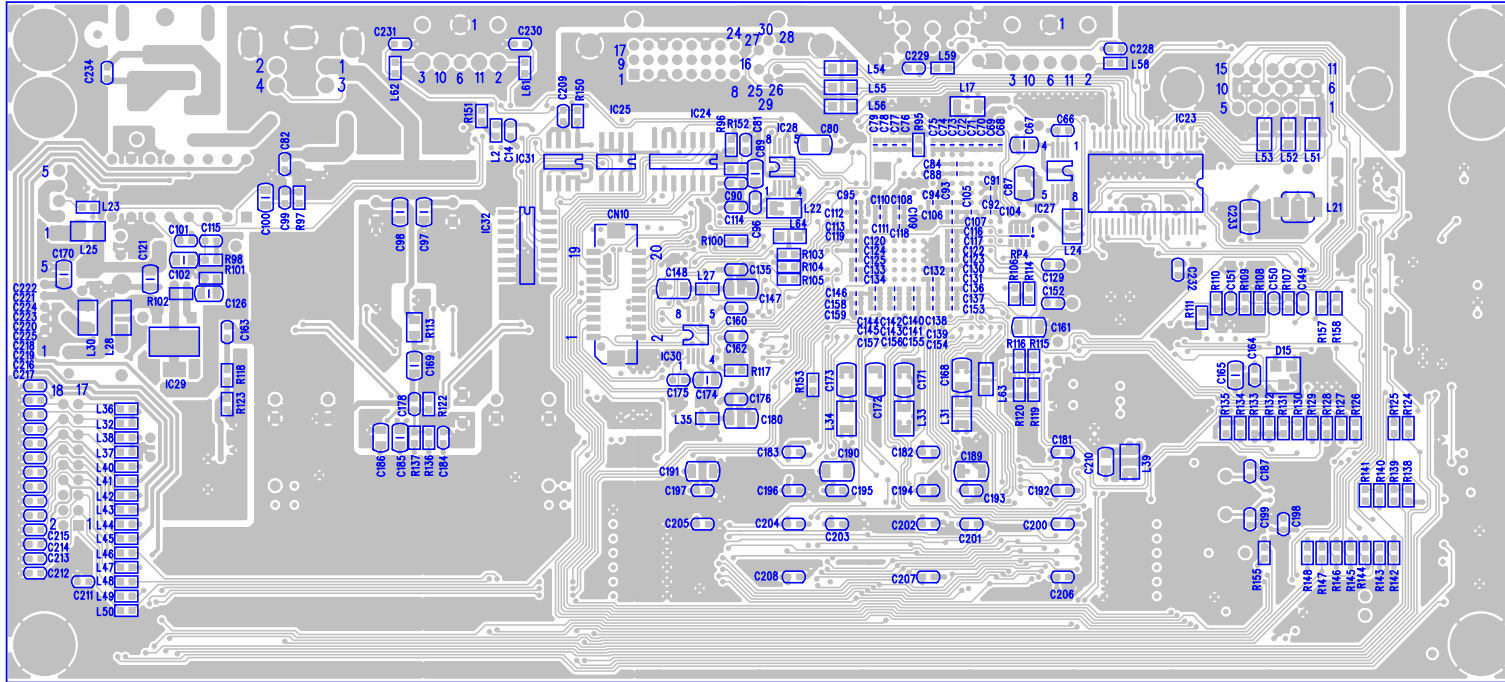
PLACE RN CLOSE TO MEMORY ICs

A-f

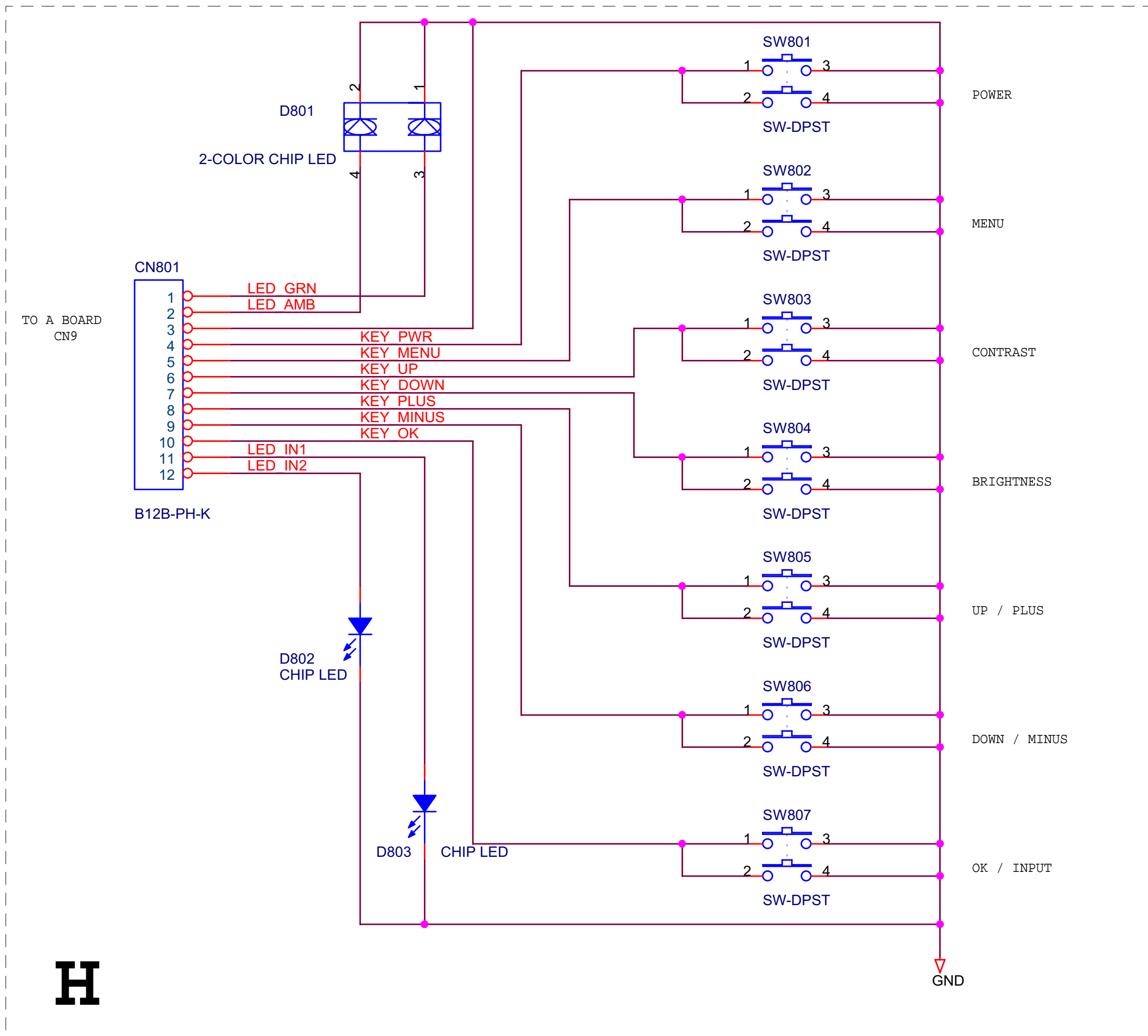




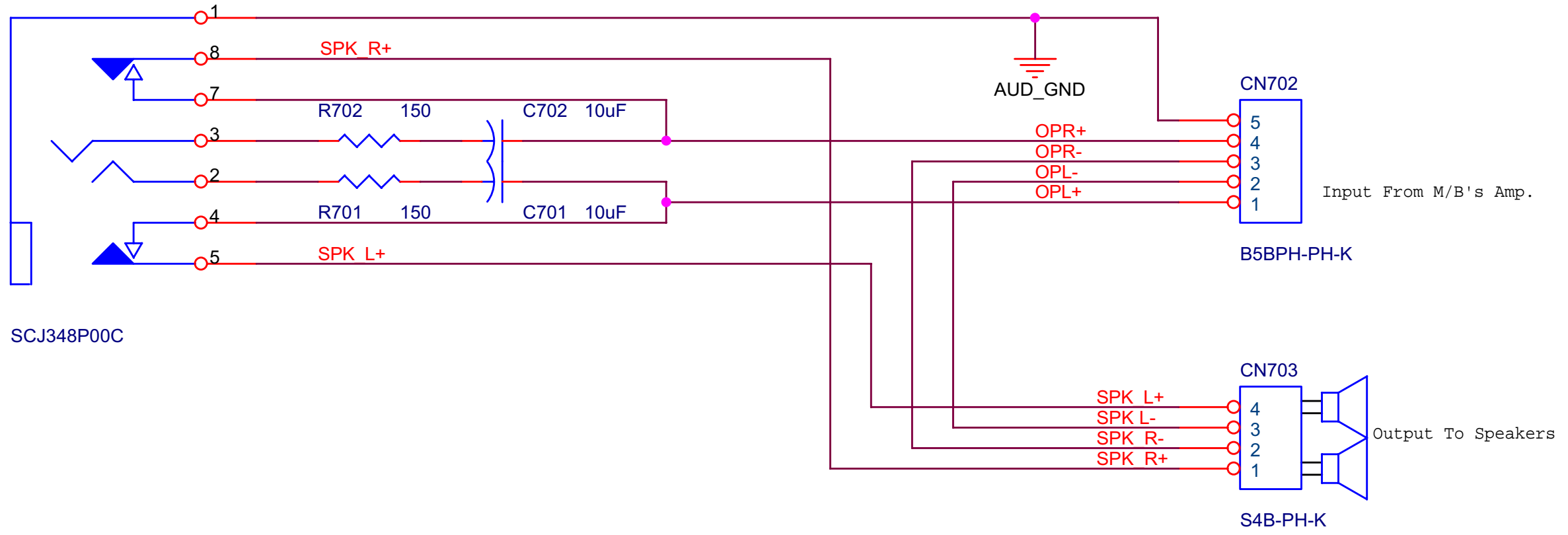
SDM-M81(E)
4-9



SDM-81(E)
4-10



CN701



SCJ348P00C

CN702

B5BPH-PH-K

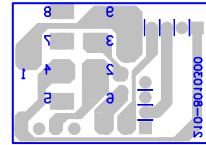
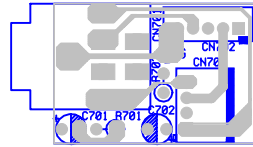
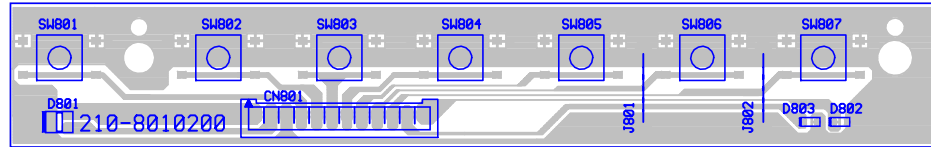
CN703

S4B-PH-K

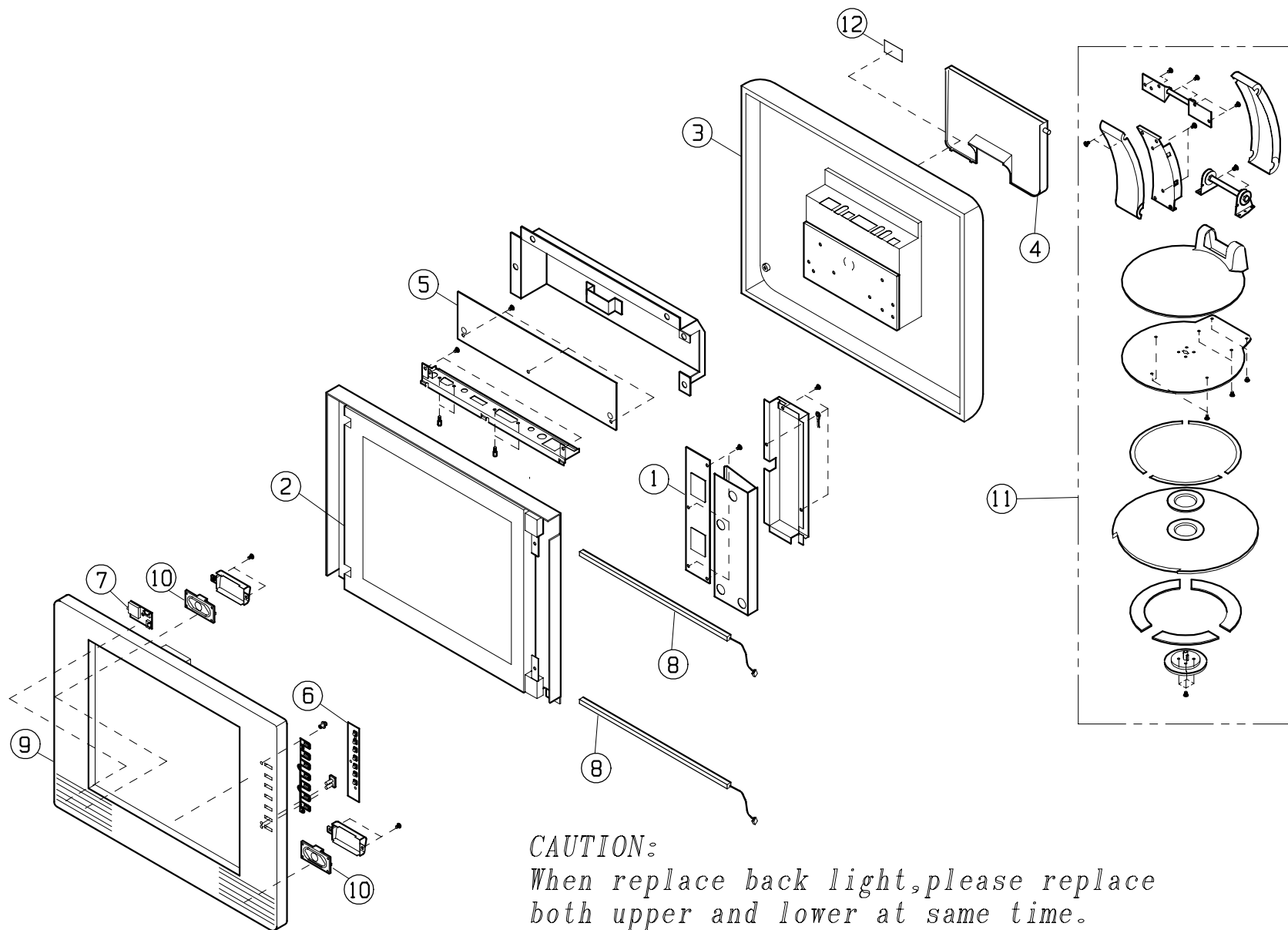
Input From M/B's Amp.

Output To Speakers

J



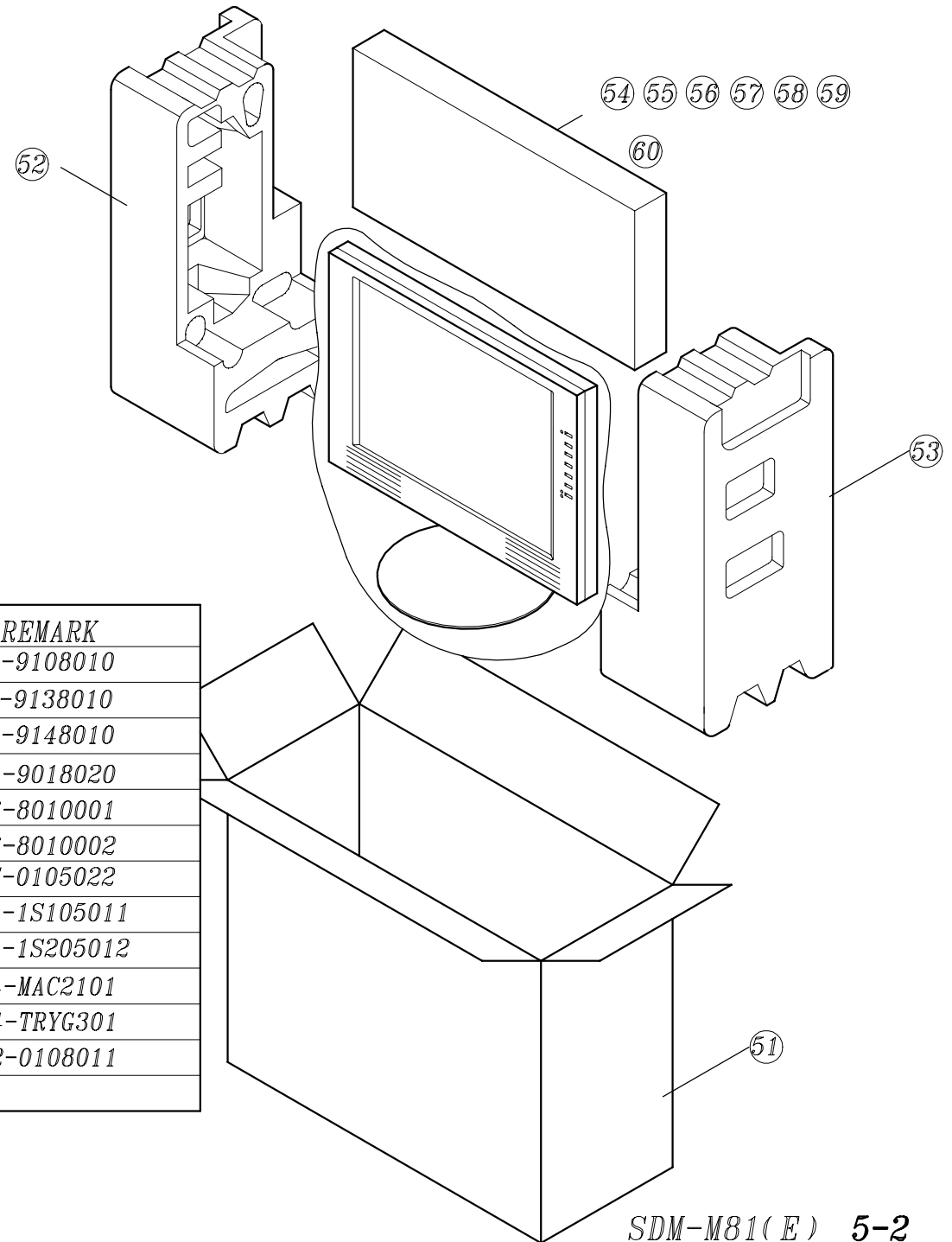
SDM-M81(E)
4-13



CAUTION:
 When replace back light, please replace both upper and lower at same time.

REF NO.	PART NO.	DESCRIPTION	REMARK	REF NO.	PART NO.	DESCRIPTION	REMARK
1	1-476-767-11	INVERTOR	241-SM18110	8	1-518-768-11	BACK LIGHT	NA
2	1-804-390-11	PANEL, LCD	245-181LG01	9	X-4038-912-1	BEZEL ASS'Y	422-S-0108010
3	X-4038-917-1	BACK CABINET ASS'Y	422-S-0308010	10	Pending	SPEAKER	KS140285
4	4-082-856-01	REAR COVER	422-0148010	11	X-4038-913-1	STAND ASS'Y	422-S-0208010
5	A-1272-381-A	A MOUNT	209-8010010	12	4-081-578-11	INFORMATION LABEL	610-0308010
6	A-1372-994-A	H MOUNT	209-8010020				
7	A-1388-324-A	J MOUNT	209-8010030				

5-2. PACKING MATERIALS



REF NO.	PART NO.	DESCRIPTION	REMARK
51	4-082-020-01	INDIVIDUAL CARTON	601-9108010
52	4-082-021-01	CUSHION (L)	404-9138010
53	4-082-022-01	CUSHION (R)	404-9148010
54	1-476-761-11	ADAPTOR, AC	201-9018020
55	1-823-049-11	DVI CABLE ASS'Y 20276 L=1800mm	186-8010001
56	1-757-372-11	CORD, CONNECTION(WITH PLUG)	186-8010002
57	1-772-979-13	DISK, INFORMATION(CD-ROM)	617-0105022
58	1-765-720-21	CORD SET, POWER(U/C)	181-1S105011
58	1-765-719-21	CORD SET, POWER(AEP)	181-1S205012
59	1-778-967-21	ADAPTOR , CONVERSION(U/C)	204-MAC2101
59	1-785-512-31	CONNECTOR, D SUB(15P CHANGER)(AEP)	204-TRYG301
60	4-082-180-11	MANUAL, INSTRUCTION	612-0108011

SECTION 6

ELECTRICAL PARTS LIST

NOTE:

The components identified ! Marked are critical for safety.
Replace only with the part number specified.

Les composants identifiés par la marque ! sont critiques pour la sécurité.
Ne les remplacer que par une pièce portant le numéro spécifié.

When indicating parts by reference number, please include the board name.

- All variable and adjustable resistors have characteristic curve B, unless otherwise noted.

- Items marked " * " are not stocked since they are seldom required for routine service. Some delay should be anticipated when ordering these items.

RESISTORS

- All resistors are in ohms
- F: nonflammable

CAPACITOR

- MF: uF

COIL

- UH: uH

NO.	#	Board	Type	!/*	REF. NO.	PART NO.	DESCRIPTION	REMARK	DIFFERENCE
1		A	CAPACITOR		C001	1-117-370-11	CERAMIC CHIP 10UF 1206 10V	122-CY106Z10TW	
2		A	CAPACITOR		C002	1-164-346-11	CERAMIC CHIP 1UF 0805 25V	122-CY105Z25TX	
3		A	CAPACITOR		C003	1-162-970-21	CERAMIC CHIP 0.01UF 0603 50V	122-CX103K50TV	
4		A	CAPACITOR		C004	1-162-923-11	CERAMIC CHIP 47PF 0603 50V	122-CC470J50TV	
5		A	CAPACITOR		C005	1-162-923-11	CERAMIC CHIP 47PF 0603 50V	122-CC470J50TV	
6		A	CAPACITOR		C006	1-162-923-11	CERAMIC CHIP 47PF 0603 50V	122-CC470J50TV	
7		A	CAPACITOR		C007	1-162-923-11	CERAMIC CHIP 47PF 0603 50V	122-CC470J50TV	
8		A	CAPACITOR		C008	1-162-970-21	CERAMIC CHIP 0.01UF 0603 50V	122-CX103K50TV	
9		A	CAPACITOR		C010	1-126-526-11	ELECT-CA 100UF 25V	162-CA101M25	
10		A	CAPACITOR		C011	1-162-970-21	CERAMIC CHIP 0.01UF 0603 50V	122-CX103K50TV	
11		A	CAPACITOR		C012	1-162-970-21	CERAMIC CHIP 0.01UF 0603 50V	122-CX103K50TV	
12		A	CAPACITOR		C013	1-131-992-11	CERAMIC CHIP 0.1UF 0603 25V	122-CY104Z25TV	
13		A	CAPACITOR		C014	1-131-992-11	CERAMIC CHIP 0.1UF 0603 25V	122-CY104Z25TV	
14		A	CAPACITOR		C015	1-131-992-11	CERAMIC CHIP 0.1UF 0603 25V	122-CY104Z25TV	
15		A	CAPACITOR		C016	1-131-992-11	CERAMIC CHIP 0.1UF 0603 25V	122-CY104Z25TV	
16		A	CAPACITOR		C017	1-162-970-21	CERAMIC CHIP 0.01UF 0603 50V	122-CX103K50TV	
17		A	CAPACITOR		C019	1-126-526-11	ELECT-CA 100UF 25V	162-CA101M25	
18		A	CAPACITOR		C020	1-126-526-11	ELECT-CA 100UF 25V	162-CA101M25	
19		A	CAPACITOR		C022	1-128-126-11	ELECT-SAX 100UF 25V	162-SAX101M25	
20		A	CAPACITOR		C023	1-131-992-11	CERAMIC CHIP 0.1UF 0603 25V	122-CY104Z25TV	
21		A	CAPACITOR		C024	1-162-970-21	CERAMIC CHIP 0.01UF 0603 50V	122-CX103K50TV	
22		A	CAPACITOR		C025	1-162-970-21	CERAMIC CHIP 0.01UF 0603 50V	122-CX103K50TV	
23		A	CAPACITOR		C026	1-162-970-21	CERAMIC CHIP 0.01UF 0603 50V	122-CX103K50TV	
24		A	CAPACITOR		C027	1-131-992-11	CERAMIC CHIP 0.1UF 0603 25V	122-CY104Z25TV	
25		A	CAPACITOR		C028	1-162-970-21	CERAMIC CHIP 0.01UF 0603 50V	122-CX103K50TV	
26		A	CAPACITOR		C029	1-162-970-21	CERAMIC CHIP 0.01UF 0603 50V	122-CX103K50TV	
27		A	CAPACITOR		C030	1-131-992-11	CERAMIC CHIP 0.1UF 0603 25V	122-CY104Z25TV	
28		A	CAPACITOR		C031	1-117-370-11	CERAMIC CHIP 10UF 1206 10V	122-CY106Z10TW	

NO.	#	Board	Type	!/*	REF. NO.	PART NO.	DESCRIPTION	REMARK	DIFFERENCE
29		A	CAPACITOR		C032	1-126-526-11	ELECT-CA 100UF 25V	162-CA101M25	
30		A	CAPACITOR		C033	1-117-370-11	CERAMIC CHIP 10UF 1206 10V	122-CY106Z10TW	
31		A	CAPACITOR		C034	1-162-970-21	CERAMIC CHIP 0.01UF 0603 50V	122-CX103K50TV	
32		A	CAPACITOR		C035	1-131-992-11	CERAMIC CHIP 0.1UF 0603 25V	122-CY104Z25TV	
33		A	CAPACITOR		C036	1-117-370-11	CERAMIC CHIP 10UF 1206 10V	122-CY106Z10TW	
34		A	CAPACITOR		C037	1-117-370-11	CERAMIC CHIP 10UF 1206 10V	122-CY106Z10TW	
35		A	CAPACITOR		C038	1-128-126-11	ELECT-SAX 100UF 25V	162-SAX101M25	
36		A	CAPACITOR		C039	1-164-346-11	CERAMIC CHIP 1UF 0805 25V	122-CY105Z25TX	
37		A	CAPACITOR		C040	1-131-992-11	CERAMIC CHIP 0.1UF 0603 25V	122-CY104Z25TV	
38		A	CAPACITOR		C041	1-131-992-11	CERAMIC CHIP 0.1UF 0603 25V	122-CY104Z25TV	
39		A	CAPACITOR		C042	1-164-346-11	CERAMIC CHIP 1UF 0805 25V	122-CY105Z25TX	
40		A	CAPACITOR		C043	1-163-021-11	CERAMIC CHIP 0.1UF 0805 50V	122-CY104Z50TX	
41		A	CAPACITOR		C044	1-163-021-11	CERAMIC CHIP 0.1UF 0805 50V	122-CY104Z50TX	
42		A	CAPACITOR		C045	Pending	CAP-EC 47UFM 16V	120-47616SS	
43		A	CAPACITOR		C046	1-107-889-11	ELECT-CA 220UF 25V	162-CA221M25	
44		A	CAPACITOR		C047	1-162-970-21	CERAMIC CHIP 0.01UF 0603 50V	122-CX103K50TV	
45		A	CAPACITOR		C048	1-131-992-11	CERAMIC CHIP 0.1UF 0603 25V	122-CY104Z25TV	
46		A	CAPACITOR		C049	1-117-370-11	CERAMIC CHIP 10UF 1206 10V	122-CY106Z10TW	
47		A	CAPACITOR		C050	1-117-370-11	CERAMIC CHIP 10UF 1206 10V	122-CY106Z10TW	
48		A	CAPACITOR		C051	1-162-970-21	CERAMIC CHIP 0.01UF 0603 50V	122-CX103K50TV	
49		A	CAPACITOR		C052	1-131-992-11	CERAMIC CHIP 0.1UF 0603 25V	122-CY104Z25TV	
50		A	CAPACITOR		C053	1-117-370-11	CERAMIC CHIP 10UF 1206 10V	122-CY106Z10TW	
51		A	CAPACITOR		C054	1-128-126-11	ELECT-SAX 100UF 25V	162-SAX101M25	
52		A	CAPACITOR		C055	1-128-126-11	ELECT-SAX 100UF 25V	162-SAX101M25	
53		A	CAPACITOR		C056	1-111-239-11	ELECT-OS 47UF 6.3V	164-SA470M06	
54		A	CAPACITOR		C057	1-111-239-11	ELECT-OS 47UF 6.3V	164-SA470M06	
55		A	CAPACITOR		C058	1-162-927-11	CERAMIC CHIP 100PF 0603 50V	122-CC101J50TV	
56		A	CAPACITOR		C059	1-164-505-11	CERAMIC CHIP 2.2UF 0805 16V	122-CY225Z16TX	

NO.	#	Board	Type	!/*	REF. NO.	PART NO.	DESCRIPTION	REMARK	DIFFERENCE
57		A	CAPACITOR		C060	1-131-992-11	CERAMIC CHIP 0.1UF 0603 25V	122-CY104Z25TV	
58		A	CAPACITOR		C061	1-128-126-11	ELECT-SAX 100UF 25V	162-SAX101M25	
59		A	CAPACITOR		C062	1-162-923-11	CERAMIC CHIP 47PF 0603 50V	122-CC470J50TV	
60		A	CAPACITOR		C063	1-164-505-11	CERAMIC CHIP 2.2UF 0805 16V	122-CY225Z16TX	
61		A	CAPACITOR		C064	1-164-505-11	CERAMIC CHIP 2.2UF 0805 16V	122-CY225Z16TX	
62		A	CAPACITOR		C065	1-131-992-11	CERAMIC CHIP 0.1UF 0603 25V	122-CY104Z25TV	
63		A	CAPACITOR		C066	1-162-970-21	CERAMIC CHIP 0.01UF 0603 50V	122-CX103K50TV	
64		A	CAPACITOR		C067	1-164-346-11	CERAMIC CHIP 1UF 0805 25V	122-CY105Z25TX	
65		A	CAPACITOR		C068	1-164-933-11	CERAMIC CHIP 220PF 0402 50V	122-CX221J50TZ	
66		A	CAPACITOR		C069	1-107-820-11	CERAMIC CHIP 0.1UF 0402 16V	122-CC104Z16TZ	
67		A	CAPACITOR		C070	1-107-820-11	CERAMIC CHIP 0.1UF 0402 16V	122-CC104Z16TZ	
68		A	CAPACITOR		C071	1-164-933-11	CERAMIC CHIP 220PF 0402 50V	122-CX221J50TZ	
69		A	CAPACITOR		C072	1-107-820-11	CERAMIC CHIP 0.1UF 0402 16V	122-CC104Z16TZ	
70		A	CAPACITOR		C073	1-164-933-11	CERAMIC CHIP 220PF 0402 50V	122-CX221J50TZ	
71		A	CAPACITOR		C074	1-107-820-11	CERAMIC CHIP 0.1UF 0402 16V	122-CC104Z16TZ	
72		A	CAPACITOR		C075	1-164-933-11	CERAMIC CHIP 220PF 0402 50V	122-CX221J50TZ	
73		A	CAPACITOR		C076	1-107-820-11	CERAMIC CHIP 0.1UF 0402 16V	122-CC104Z16TZ	
74		A	CAPACITOR		C077	1-164-933-11	CERAMIC CHIP 220PF 0402 50V	122-CX221J50TZ	
75		A	CAPACITOR		C078	1-164-933-11	CERAMIC CHIP 220PF 0402 50V	122-CX221J50TZ	
76		A	CAPACITOR		C079	1-164-933-11	CERAMIC CHIP 220PF 0402 50V	122-CX221J50TZ	
77		A	CAPACITOR		C080	1-117-370-11	CERAMIC CHIP 10UF 1206 10V	122-CY106Z10TW	
78		A	CAPACITOR		C081	1-131-992-11	CERAMIC CHIP 0.1UF 0603 25V	122-CY104Z25TV	
79		A	CAPACITOR		C082	1-131-992-11	CERAMIC CHIP 0.1UF 0603 25V	122-CY104Z25TV	
80		A	CAPACITOR		C083	1-162-970-21	CERAMIC CHIP 0.01UF 0603 50V	122-CX103K50TV	
81		A	CAPACITOR		C084	1-107-820-11	CERAMIC CHIP 0.1UF 0402 16V	122-CC104Z16TZ	
82		A	CAPACITOR		C087	1-117-370-11	CERAMIC CHIP 10UF 1206 10V	122-CY106Z10TW	
83		A	CAPACITOR		C088	1-107-820-11	CERAMIC CHIP 0.1UF 0402 16V	122-CC104Z16TZ	
84		A	CAPACITOR		C089	1-117-370-11	CERAMIC CHIP 10UF 1206 5V	122-CY106Z10TW	

NO.	#	Board	Type	!/*	REF. NO.	PART NO.	DESCRIPTION	REMARK	DIFFERENCE
85		A	CAPACITOR		C090	1-131-992-11	CERAMIC CHIP 0.1UF 0603 25V	122-CY104Z25TV	
86		A	CAPACITOR		C091	1-107-820-11	CERAMIC CHIP 0.1UF 0402 16V	122-CC104Z16TZ	
87		A	CAPACITOR		C092	1-107-820-11	CERAMIC CHIP 0.1UF 0402 16V	122-CC104Z16TZ	
88		A	CAPACITOR		C093	1-164-933-11	CERAMIC CHIP 220PF 0402 50V	122-CX221J50TZ	
89		A	CAPACITOR		C094	1-164-933-11	CERAMIC CHIP 220PF 0402 50V	122-CX221J50TZ	
90		A	CAPACITOR		C095	1-107-820-11	CERAMIC CHIP 0.1UF 0402 16V	122-CC104Z16TZ	
91		A	CAPACITOR		C096	1-162-970-21	CERAMIC CHIP 0.01UF 0603 50V	122-CX103K50TV	
92		A	CAPACITOR		C097	1-163-021-11	CERAMIC CHIP 0.1UF 0805 50V	122-CY104Z50TX	
93		A	CAPACITOR		C098	1-163-021-11	CERAMIC CHIP 0.1UF 0805 50V	122-CY104Z50TX	
94		A	CAPACITOR		C099	1-162-964-11	CERAMIC CHIP 1000PF 0603 50V	122-CX102K50TV	
95		A	CAPACITOR		C100	1-104-760-11	CERAMIC CHIP 0.47UF 0805 50V	122-CY474Z50TX	
96		A	CAPACITOR		C101	1-131-992-11	CERAMIC CHIP 0.1UF 0603 25V	122-CY104Z25TV	
97		A	CAPACITOR		C102	1-104-760-11	CERAMIC CHIP 0.47UF 0805 50V	122-CY474Z50TX	
98		A	CAPACITOR		C103	1-128-126-11	ELECT-SAX 100UF 25V	162-SAX101M25	
99		A	CAPACITOR		C104	1-164-933-11	CERAMIC CHIP 220PF 0402 50V	122-CX221J50TZ	
100		A	CAPACITOR		C105	1-164-933-11	CERAMIC CHIP 220PF 0402 50V	122-CX221J50TZ	
101		A	CAPACITOR		C106	1-164-933-11	CERAMIC CHIP 220PF 0402 50V	122-CX221J50TZ	
102		A	CAPACITOR		C107	1-107-820-11	CERAMIC CHIP 0.1UF 0402 16V	122-CC104Z16TZ	
103		A	CAPACITOR		C108	1-107-820-11	CERAMIC CHIP 0.1UF 0402 16V	122-CC104Z16TZ	
104		A	CAPACITOR		C109	1-107-820-11	CERAMIC CHIP 0.1UF 0402 16V	122-CC104Z16TZ	
105		A	CAPACITOR		C110	1-107-820-11	CERAMIC CHIP 0.1UF 0402 16V	122-CC104Z16TZ	
106		A	CAPACITOR		C111	1-164-933-11	CERAMIC CHIP 220PF 0402 50V	122-CX221J50TZ	
107		A	CAPACITOR		C112	1-164-933-11	CERAMIC CHIP 220PF 0402 50V	122-CX221J50TZ	
108		A	CAPACITOR		C113	1-107-820-11	CERAMIC CHIP 0.1UF 0402 16V	122-CC104Z16TZ	
109		A	CAPACITOR		C114	1-131-992-11	CERAMIC CHIP 0.1UF 0603 25V	122-CY104Z25TV	
110		A	CAPACITOR		C115	1-162-964-11	CERAMIC CHIP 1000PF 0603 50V	122-CX102K50TV	
111		A	CAPACITOR		C116	1-107-820-11	CERAMIC CHIP 0.1UF 0402 16V	122-CC104Z16TZ	
112		A	CAPACITOR		C117	1-164-933-11	CERAMIC CHIP 220PF 0402 50V	122-CX221J50TZ	

NO.	#	Board	Type	!/*	REF. NO.	PART NO.	DESCRIPTION	REMARK	DIFFERENCE
113		A	CAPACITOR		C118	1-107-820-11	CERAMIC CHIP 0.1UF 0402 16V	122-CC104Z16TZ	
114		A	CAPACITOR		C119	1-107-820-11	CERAMIC CHIP 0.1UF 0402 16V	122-CC104Z16TZ	
115		A	CAPACITOR		C120	1-107-820-11	CERAMIC CHIP 0.1UF 0402 16V	122-CC104Z16TZ	
116		A	CAPACITOR		C121	1-163-021-11	CERAMIC CHIP 0.1UF 0805 50V	122-CY104Z50TX	
117		A	CAPACITOR		C122	1-107-820-11	CERAMIC CHIP 0.1UF 0402 16V	122-CC104Z16TZ	
118		A	CAPACITOR		C123	1-107-820-11	CERAMIC CHIP 0.1UF 0402 16V	122-CC104Z16TZ	
119		A	CAPACITOR		C124	1-164-933-11	CERAMIC CHIP 220PF 0402 50V	122-CX221J50TZ	
120		A	CAPACITOR		C125	1-107-820-11	CERAMIC CHIP 0.1UF 0402 16V	122-CC104Z16TZ	
121		A	CAPACITOR		C126	1-164-505-11	CERAMIC CHIP 2.2UF 0805 16V	122-CY225Z16TX	
122		A	CAPACITOR		C129	1-162-919-11	CERAMIC CHIP 22PF 0603 50V	122-CC220J50TV	
123		A	CAPACITOR		C130	1-164-933-11	CERAMIC CHIP 220PF 0402 50V	122-CX221J50TZ	
124		A	CAPACITOR		C131	1-107-820-11	CERAMIC CHIP 0.1UF 0402 16V	122-CC104Z16TZ	
125		A	CAPACITOR		C132	1-164-933-11	CERAMIC CHIP 220PF 0402 50V	122-CX221J50TZ	
126		A	CAPACITOR		C133	1-107-820-11	CERAMIC CHIP 0.1UF 0402 16V	122-CC104Z16TZ	
127		A	CAPACITOR		C134	1-164-933-11	CERAMIC CHIP 220PF 0402 50V	122-CX221J50TZ	
128		A	CAPACITOR		C135	1-131-992-11	CERAMIC CHIP 0.1UF 0603 25V	122-CY104Z25TV	
129		A	CAPACITOR		C136	1-164-933-11	CERAMIC CHIP 220PF 0402 50V	122-CX221J50TZ	
130		A	CAPACITOR		C137	1-164-933-11	CERAMIC CHIP 220PF 0402 50V	122-CX221J50TZ	
131		A	CAPACITOR		C138	1-107-820-11	CERAMIC CHIP 0.1UF 0402 16V	122-CC104Z16TZ	
132		A	CAPACITOR		C139	1-164-933-11	CERAMIC CHIP 220PF 0402 50V	122-CX221J50TZ	
133		A	CAPACITOR		C140	1-164-933-11	CERAMIC CHIP 220PF 0402 50V	122-CX221J50TZ	
134		A	CAPACITOR		C141	1-164-933-11	CERAMIC CHIP 220PF 0402 50V	122-CX221J50TZ	
135		A	CAPACITOR		C142	1-107-820-11	CERAMIC CHIP 0.1UF 0402 16V	122-CC104Z16TZ	
136		A	CAPACITOR		C143	1-164-933-11	CERAMIC CHIP 220PF 0402 50V	122-CX221J50TZ	
137		A	CAPACITOR		C144	1-164-933-11	CERAMIC CHIP 220PF 0402 50V	122-CX221J50TZ	
138		A	CAPACITOR		C145	1-164-933-11	CERAMIC CHIP 220PF 0402 50V	122-CX221J50TZ	
139		A	CAPACITOR		C146	1-164-933-11	CERAMIC CHIP 220PF 0402 50V	122-CX221J50TZ	
140		A	CAPACITOR		C147	1-117-370-11	CERAMIC CHIP 10UF 1206 10V	122-CY106Z10TW	

NO.	#	Board	Type	!/*	REF. NO.	PART NO.	DESCRIPTION	REMARK	DIFFERENCE
141		A	CAPACITOR		C148	1-117-370-11	CERAMIC CHIP 10UF 1206 10V	122-CY106Z10TW	
142		A	CAPACITOR		C149	1-131-992-11	CERAMIC CHIP 0.1UF 0603 25V	122-CY104Z25TV	
143		A	CAPACITOR		C150	1-164-230-11	CERAMIC CHIP 220PF 0603 50V	122-CC221J50TV	
144		A	CAPACITOR		C151	1-164-230-11	CERAMIC CHIP 220PF 0603 50V	122-CC221J50TV	
145		A	CAPACITOR		C152	1-162-919-11	CERAMIC CHIP 22PF 0603 50V	122-CC220J50TV	
146		A	CAPACITOR		C153	1-107-820-11	CERAMIC CHIP 0.1UF 0402 16V	122-CC104Z16TZ	
147		A	CAPACITOR		C154	1-107-820-11	CERAMIC CHIP 0.1UF 0402 16V	122-CC104Z16TZ	
148		A	CAPACITOR		C155	1-107-820-11	CERAMIC CHIP 0.1UF 0402 16V	122-CC104Z16TZ	
149		A	CAPACITOR		C156	1-107-820-11	CERAMIC CHIP 0.1UF 0402 16V	122-CC104Z16TZ	
150		A	CAPACITOR		C157	1-164-933-11	CERAMIC CHIP 220PF 0402 50V	122-CX221J50TZ	
151		A	CAPACITOR		C158	1-107-820-11	CERAMIC CHIP 0.1UF 0402 16V	122-CC104Z16TZ	
152		A	CAPACITOR		C159	1-164-933-11	CERAMIC CHIP 220PF 0402 50V	122-CX221J50TZ	
153		A	CAPACITOR		C160	1-131-992-11	CERAMIC CHIP 0.1UF 0603 25V	122-CY104Z25TV	
154		A	CAPACITOR		C161	1-117-370-11	CERAMIC CHIP 10UF 1206 10V	122-CY106Z10TW	
155		A	CAPACITOR		C162	1-131-992-11	CERAMIC CHIP 0.1UF 0603 25V	122-CY104Z25TV	
156		A	CAPACITOR		C163	1-131-992-11	CERAMIC CHIP 0.1UF 0603 25V	122-CY104Z25TV	
157		A	CAPACITOR		C164	1-131-992-11	CERAMIC CHIP 0.1UF 0603 25V	122-CY104Z25TV	
158		A	CAPACITOR		C165	1-163-021-11	CERAMIC CHIP 0.1UF 0805 50V	122-CY104Z50TX	
159		A	CAPACITOR		C168	1-117-370-11	CERAMIC CHIP 10UF 1206 10V	122-CY106Z10TW	
160		A	CAPACITOR		C169	1-164-346-11	CERAMIC CHIP 1UF 0805 25V	122-CY105Z25TX	
161		A	CAPACITOR		C170	1-163-021-11	CERAMIC CHIP 0.1UF 0805 50V	122-CY104Z50TX	
162		A	CAPACITOR		C171	1-117-370-11	CERAMIC CHIP 10UF 1206 10V	122-CY106Z10TW	
163		A	CAPACITOR		C172	1-117-370-11	CERAMIC CHIP 10UF 1206 10V	122-CY106Z10TW	
164		A	CAPACITOR		C173	1-117-370-11	CERAMIC CHIP 10UF 1206 10V	122-CY106Z10TW	
165		A	CAPACITOR		C174	1-164-346-11	CERAMIC CHIP 1UF 0805 25V	122-CY105Z25TX	
166		A	CAPACITOR		C175	1-162-970-21	CERAMIC CHIP 0.01UF 0603 50V	122-CX103K50TV	
167		A	CAPACITOR		C176	1-131-992-11	CERAMIC CHIP 0.1UF 0603 25V	122-CY104Z25TV	
168		A	CAPACITOR		C177	1-163-021-11	CERAMIC CHIP 0.1UF 0805 50V	122-CY104Z50TX	

NO.	#	Board	Type	!/*	REF. NO.	PART NO.	DESCRIPTION	REMARK	DIFFERENCE
169		A	CAPACITOR		C178	1-131-992-11	CERAMIC CHIP 0.1UF 0603 25V	122-CY104Z25TV	
170		A	CAPACITOR		C179	1-163-021-11	CERAMIC CHIP 0.1UF 0805 50V	122-CY104Z50TX	
171		A	CAPACITOR		C180	1-117-370-11	CERAMIC CHIP 10UF 1206 10V	122-CY106Z10TW	
172		A	CAPACITOR		C181	1-131-992-11	CERAMIC CHIP 0.1UF 0603 25V	122-CY104Z25TV	
173		A	CAPACITOR		C182	1-131-992-11	CERAMIC CHIP 0.1UF 0603 25V	122-CY104Z25TV	
174		A	CAPACITOR		C183	1-131-992-11	CERAMIC CHIP 0.1UF 0603 25V	122-CY104Z25TV	
175		A	CAPACITOR		C184	1-162-970-21	CERAMIC CHIP 0.01UF 0603 50V	122-CX103K50TV	
176		A	CAPACITOR		C185	1-164-346-11	CERAMIC CHIP 1UF 0805 25V	122-CY105Z25TX	
177		A	CAPACITOR		C186	1-162-970-21	CERAMIC CHIP 0.01UF 0603 50V	122-CX103K50TV	
178		A	CAPACITOR		C187	1-164-457-51	CERAMIC CHIP 30PF 0603 50V	122-CC300J50TV	
179		A	CAPACITOR		C189	1-117-370-11	CERAMIC CHIP 10UF 1206 10V	122-CY106Z10TW	
180		A	CAPACITOR		C190	1-117-370-11	CERAMIC CHIP 10UF 1206 10V	122-CY106Z10TW	
181		A	CAPACITOR		C191	1-117-370-11	CERAMIC CHIP 10UF 1206 10V	122-CY106Z10TW	
182		A	CAPACITOR		C192	1-164-230-11	CERAMIC CHIP 220PF 0603 50V	122-CC221J50TV	
183		A	CAPACITOR		C193	1-131-992-11	CERAMIC CHIP 0.1UF 0603 25V	122-CY104Z25TV	
184		A	CAPACITOR		C194	1-164-230-11	CERAMIC CHIP 220PF 0603 50V	122-CC221J50TV	
185		A	CAPACITOR		C195	1-131-992-11	CERAMIC CHIP 0.1UF 0603 25V	122-CY104Z25TV	
186		A	CAPACITOR		C196	1-164-230-11	CERAMIC CHIP 220PF 0603 50V	122-CC221J50TV	
187		A	CAPACITOR		C197	1-131-992-11	CERAMIC CHIP 0.1UF 0603 25V	122-CY104Z25TV	
188		A	CAPACITOR		C198	1-131-992-11	CERAMIC CHIP 0.1UF 0603 25V	122-CY104Z25TV	
189		A	CAPACITOR		C199	1-164-457-51	CERAMIC CHIP 30PF 0603 50V	122-CC300J50TV	
190		A	CAPACITOR		C200	1-164-230-11	CERAMIC CHIP 220PF 0603 50V	122-CC221J50TV	
191		A	CAPACITOR		C201	1-131-992-11	CERAMIC CHIP 0.1UF 0603 25V	122-CY104Z25TV	
192		A	CAPACITOR		C202	1-164-230-11	CERAMIC CHIP 220PF 0603 50V	122-CC221J50TV	
193		A	CAPACITOR		C203	1-131-992-11	CERAMIC CHIP 0.1UF 0603 25V	122-CY104Z25TV	
194		A	CAPACITOR		C204	1-164-230-11	CERAMIC CHIP 220PF 0603 50V	122-CC221J50TV	
195		A	CAPACITOR		C205	1-131-992-11	CERAMIC CHIP 0.1UF 0603 25V	122-CY104Z25TV	
196		A	CAPACITOR		C206	1-164-230-11	CERAMIC CHIP 220PF 0603 50V	122-CC221J50TV	

NO.	#	Board	Type	!/*	REF. NO.	PART NO.	DESCRIPTION	REMARK	DIFFERENCE
197		A	CAPACITOR		C207	1-164-230-11	CERAMIC CHIP 220PF 0603 50V	122-CC221J50TV	
198		A	CAPACITOR		C208	1-164-230-11	CERAMIC CHIP 220PF 0603 50V	122-CC221J50TV	
199		A	CAPACITOR		C209	1-162-964-11	CERAMIC CHIP 1000PF 0603 50V	122-CX102K50TV	
200		A	CAPACITOR		C210	1-164-346-11	CERAMIC CHIP 1UF 0805 25V	122-CY105Z25TX	
201		A	CAPACITOR		C211	1-131-992-11	CERAMIC CHIP 0.1UF 0603 25V	122-CY104Z25TV	
202		A	CAPACITOR		C212	1-131-992-11	CERAMIC CHIP 0.1UF 0603 25V	122-CY104Z25TV	
203		A	CAPACITOR		C213	1-131-992-11	CERAMIC CHIP 0.1UF 0603 25V	122-CY104Z25TV	
204		A	CAPACITOR		C214	1-162-964-11	CERAMIC CHIP 1000PF 0603 50V	122-CX102K50TV	
205		A	CAPACITOR		C215	1-131-992-11	CERAMIC CHIP 0.1UF 0603 25V	122-CY104Z25TV	
206		A	CAPACITOR		C216	1-131-992-11	CERAMIC CHIP 0.1UF 0603 25V	122-CY104Z25TV	
207		A	CAPACITOR		C217	1-162-964-11	CERAMIC CHIP 1000PF 0603 50V	122-CX102K50TV	
208		A	CAPACITOR		C218	1-131-992-11	CERAMIC CHIP 0.1UF 0603 25V	122-CY104Z25TV	
209		A	CAPACITOR		C219	1-162-964-11	CERAMIC CHIP 1000PF 0603 50V	122-CX102K50TV	
210		A	CAPACITOR		C220	1-131-992-11	CERAMIC CHIP 0.1UF 0603 25V	122-CY104Z25TV	
211		A	CAPACITOR		C221	1-131-992-11	CERAMIC CHIP 0.1UF 0603 25V	122-CY104Z25TV	
212		A	CAPACITOR		C222	1-131-992-11	CERAMIC CHIP 0.1UF 0603 25V	122-CY104Z25TV	
213		A	CAPACITOR		C223	1-131-992-11	CERAMIC CHIP 0.1UF 0603 25V	122-CY104Z25TV	
214		A	CAPACITOR		C224	1-131-992-11	CERAMIC CHIP 0.1UF 0603 25V	122-CY104Z25TV	
215		A	CAPACITOR		C225	1-162-964-11	CERAMIC CHIP 1000PF 0603 50V	122-CX102K50TV	
216		A	CAPACITOR		C226	1-131-992-11	CERAMIC CHIP 0.1UF 0603 25V	122-CY104Z25TV	
217		A	CAPACITOR		C227	1-131-992-11	CERAMIC CHIP 0.1UF 0603 25V	122-CY104Z25TV	
218		A	CAPACITOR		C228	1-162-964-11	CERAMIC CHIP 1000PF 0603 50V	122-CX102K50TV	
219		A	CAPACITOR		C229	1-162-964-11	CERAMIC CHIP 1000PF 0603 50V	122-CX102K50TV	
220		A	CAPACITOR		C230	1-162-964-11	CERAMIC CHIP 1000PF 0603 50V	122-CX102K50TV	
221		A	CAPACITOR		C231	1-162-964-11	CERAMIC CHIP 1000PF 0603 50V	122-CX102K50TV	
222		A	CAPACITOR		C232	1-131-992-11	CERAMIC CHIP 0.1UF 0603 25V	122-CY104Z25TV	
223		A	CAPACITOR		C234	1-162-964-11	CERAMIC CHIP 1000PF 0603 50V	122-CX102K50TV	
286		A	COIL		L001	Pending	BEAD, 1608K-300R	143-B1608301	

NO.	#	Board	Type	!/*	REF. NO.	PART NO.	DESCRIPTION	REMARK	DIFFERENCE
287		A	COIL		L002	Pending	BEAD, 1608K-300R	143-B1608301	
288		A	COIL		L003	Pending	BEAD, 1608K-300R	143-B1608301	
289		A	COIL		L004	Pending	BEAD, 1608K-300R	143-B1608301	
290		A	COIL		L005	Pending	BEAD, 1608K-300R	143-B1608301	
291		A	COIL		L006	Pending	BEAD, 1608K-300R	143-B1608301	
292		A	COIL		L007	Pending	BEAD, 1608K-300R	143-B1608301	
293		A	COIL		L008	1-400-044-11	SELMAC, STC104B	280-STC104B	
282		A	COIL		L009	1-469-975-11	INDUCTOR 15UH	141-3L105150	
283		A	COIL		L010	1-469-975-11	INDUCTOR 15UH	141-3L105150	
294		A	COIL		L011	1-400-044-11	SELMAC, STC104B	280-STC104B	
295		A	COIL		L012	1-400-044-11	SELMAC, STC104B	280-STC104B	
284		A	COIL		L013	Pending	INDUCTOR 68UH	141-3L105680	
296		A	COIL		L014	1-400-044-11	SELMAC, STC104B	280-STC104B	
297		A	COIL		L015	1-469-977-11	BEAD 3216K-500R	143-NG3216501	
298		A	COIL		L017	1-469-977-11	BEAD 3216K-500R	143-NG3216501	
299		A	COIL		L018	Pending	BEAD, 1608K-300R	143-B1608301	
300		A	COIL		L019	Pending	BEAD, 1608K-300R	143-B1608301	
301		A	COIL		L020	1-469-977-11	BEAD 3216K-500R	143-NG3216501	
285		A	COIL		L021	1-414-183-11	INDUCTOR 10UH	141-3L043100	
302		A	COIL		L021	1-469-977-11	BEAD 3216K-500R	143-NG3216501	
303		A	COIL		L022	1-469-977-11	BEAD 3216K-500R	143-NG3216501	
304		A	COIL		L023	Pending	BEAD 1608K-300R	143-B1608301	
305		A	COIL		L024	1-469-977-11	BEAD 3216K-500R	143-NG3216501	
306		A	COIL		L025	1-469-977-11	BEAD 3216K-500R	143-NG3216501	
307		A	COIL		L027	Pending	BEAD, 1608K-300R	143-B1608301	
308		A	COIL		L028	1-469-977-11	BEAD 3216K-500R	143-NG3216501	
309		A	COIL		L030	1-469-977-11	BEAD 3216K-500R	143-NG3216501	
310		A	COIL		L031	1-469-977-11	BEAD 3216K-500R	143-NG3216501	

NO.	#	Board	Type	!/*	REF. NO.	PART NO.	DESCRIPTION	REMARK	DIFFERENCE
311		A	COIL		L032	Pending	BEAD, 1608K-300R	143-B1608301	
312		A	COIL		L033	1-469-977-11	BEAD 3216K-500R	143-NG3216501	
313		A	COIL		L034	1-469-977-11	BEAD 3216K-500R	143-NG3216501	
314		A	COIL		L035	Pending	BEAD, 1608K-300R	143-B1608301	
315		A	COIL		L036	Pending	BEAD, 1608K-300R	143-B1608301	
316		A	COIL		L037	Pending	BEAD, 1608K-300R	143-B1608301	
317		A	COIL		L038	Pending	BEAD, 1608K-300R	143-B1608301	
318		A	COIL		L039	1-469-977-11	BEAD 3216K-500R	143-NG3216501	
319		A	COIL		L040	Pending	BEAD, 1608K-300R	143-B1608301	
320		A	COIL		L041	Pending	BEAD, 1608K-300R	143-B1608301	
321		A	COIL		L042	Pending	BEAD, 1608K-300R	143-B1608301	
322		A	COIL		L043	Pending	BEAD, 1608K-300R	143-B1608301	
323		A	COIL		L044	Pending	BEAD, 1608K-300R	143-B1608301	
324		A	COIL		L045	Pending	BEAD, 1608K-300R	143-B1608301	
325		A	COIL		L046	Pending	BEAD, 1608K-300R	143-B1608301	
326		A	COIL		L047	Pending	BEAD, 1608K-300R	143-B1608301	
327		A	COIL		L048	Pending	BEAD, 1608K-300R	143-B1608301	
328		A	COIL		L049	Pending	BEAD, 1608K-300R	143-B1608301	
329		A	COIL		L050	Pending	BEAD, 1608K-300R	143-B1608301	
330		A	COIL		L058	Pending	BEAD, 1608K-600R	143-B1608601	
331		A	COIL		L059	Pending	BEAD, 1608K-600R	143-B1608601	
332		A	COIL		L061	Pending	BEAD, 1608K-600R	143-B1608601	
333		A	COIL		L062	Pending	BEAD, 1608K-600R	143-B1608601	
334		A	COIL		T001	Pending	COMMON MODE CHOKE	142-B7050930	
224		A	CONNECTOR		CN001	1-507-834-31	PHONE-JACK	203-0235601B	
225		A	CONNECTOR		CN002	1-507-834-31	PHONE-JACK	203-0235601B	
226		A	CONNECTOR		CN003	1-793-962-21	CONN, DVI-I	203-11211CP0	
227		A	CONNECTOR		CN004	1-573-792-11	MINI DIN. 4P	203-0411041	

NO.	#	Board	Type	!/*	REF. NO.	PART NO.	DESCRIPTION	REMARK	DIFFERENCE
228		A	CONNECTOR		CN005	1-779-745-21	DC-JACK	203-021103S	
229		A	CONNECTOR		CN006	1-774-361-11	D-SUB 15P	203-1511201	
230		A	CONNECTOR		CN007	Pending	CONN, 5P	197-S5BPHK	
231		A	CONNECTOR		CN008	Pending	CONN, 5P	197-S5BZR	
232		A	CONNECTOR		CN009	Pending	CONN, 18P	197-S18BPHD	
233		A	CONNECTOR		CN010	Pending	CONN, 20P	197-DF1320DP	
482		A	CRYSTAL		X001	Pending	CRYSTAL 24.000MHZ	131-24000001	
483		A	CRYSTAL		X002	1-795-093-11	CRYSTAL 11.0592MHZ	131-11059201	
235		A	DIODE		D001	1-807-635-11	DIODE.ZENER RLZ5.1B	150-RLZ5V1B	
236		A	DIODE		D002	1-807-635-11	DIODE.ZENER RLZ5.1B	150-RLZ5V1B	
237		A	DIODE		D003	1-807-635-11	DIODE.ZENER RLZ5.1B	150-RLZ5V1B	
238		A	DIODE		D004	1-807-635-11	DIODE.ZENER RLZ5.1B	150-RLZ5V1B	
239		A	DIODE		D005	8-719-902-49	DIODE, BAV70	170-BAV70T	
240		A	DIODE		D006	1-807-635-11	DIODE.ZENER RLZ5.1B	150-RLZ5V1B	
241		A	DIODE		D007	1-807-635-11	DIODE.ZENER RLZ5.1B	150-RLZ5V1B	
242		A	DIODE		D008	1-808-077-11	DIODE.SCHOTTKY SB-540	150-00SB540	
243		A	DIODE		D010	8-719-976-19	DIODE, RLS4148	151-RLS4148	
244		A	DIODE		D011	8-719-976-19	DIODE, RLS4148	151-RLS4148	
245		A	DIODE		D012	8-719-976-19	DIODE, RLS4148	151-RLS4148	
246		A	DIODE		D013	8-719-967-19	DIODE, RLS4148	151-RLS4148	
247		A	DIODE		D014	Pending	DIODE.SCHOTTKY SK-24	150-00SK240	
248		A	DIODE		D015	8-719-902-49	DIODE, BAV70	170-BAV70T	
249		A	FUSE		F001	1-532-783-11	Micro Fuse 5.0A	147-BLMQ050	
250		A	FUSE		F002	1-532-780-11	Micro Fuse 2.5A	147-BLMQ025	
251		A	FUSE		F003	1-576-491-11	Micro Fuse 1.5A	147-BLMQ015	
252		A	IC		IC001	Pending	IC SI9181-25	160-918125T	
253		A	IC		IC002	8-759-011-65	IC 74HC4053	160-HC4053T	
254		A	IC		IC003	8-759-644-72	IC DS90C383	160-90C383T	

NO.	#	Board	Type	!/*	REF. NO.	PART NO.	DESCRIPTION	REMARK	DIFFERENCE
255		A	IC		IC004	8-759-478-64	IC TDA7053A-N2	160-07053A0	
256		A	IC		IC005	8-759-033-19	IC 74F125	160-F1250T	
257		A	IC		IC006	8-759-033-07	IC 74F14	160-F0140T	
258		A	IC		IC007	8-759-998-92	IC LM393DT	160-039300T	
259		A	IC		IC010	8-759-644-72	IC DS90C383	160-90C383T	
260		A	IC		IC011	8-759-998-98	IC LM358DT	160-035800T	
261		A	IC		IC012	8-759-011-65	IC 74HC4053	160-HC4053T	
262		A	IC		IC013	8-759-442-20	IC 24LC21BT-SN	160-024021T	
263		A	IC		IC015	8-759-527-77	IC M24C16-MN6	160-024016T	
264		A	IC		IC016	8-759-663-74	IC HY57V161610DTC-7	160-H1610D7T	
265		A	IC		IC017	8-759-663-74	IC HY57V161610DTC-7	160-H1610D7T	
266		A	IC		IC018	8-759-663-74	IC HY57V161610DTC-7	160-H1610D7T	
267		A	IC		IC019	8-759-541-69	IC, SI786CG	160-SI786CG	
268		A	IC		IC020	Pending	IC PQ1CY1032Z	160-CY1032Z	
269		A	IC		IC021	Pending	IC MTV212M	Pending	
270		A	IC		IC022	8-759-634-77	IC M51951BML	160-051951T	
271		A	IC		IC023	8-759-541-25	IC M52758FP	160-52758FP	
272		A	IC		IC024	8-759-426-55	IC 74HC4066	160-HC4066T	
273		A	IC		IC025	8-759-442-20	IC 24LC21BT-SN	160-024021T	
274		A	IC		IC027	Pending	IC SI9181-33	160-918133T	
275		A	IC		IC028	Pending	IC SI9181-33	160-918133T	
276		A	IC		IC029	Pending	IC LX8117-00CST	160-811700T	
277		A	IC		IC030	Pending	IC SI9181-33	160-918133T	
278		A	IC		IC031	8-759-442-20	IC 24LC21BT-SN	160-024021T	
279		A	IC		IC032	8-759-011-65	IC 74HC4053	160-HC4053T	
280		A	IC		IC033	8-759-582-37	IC PQ2TZ15	160-PQ2TZ15	
281		A	IC		IC034	8-759-011-65	IC 74HC4053	160-HC4053T	
335		A	RESISTOR		C009	1-216-864-11	RES CHIP 0R 0603 1/16W	100-CR00JT16	

NO.	#	Board	Type	!/*	REF. NO.	PART NO.	DESCRIPTION	REMARK	DIFFERENCE
336		A	RESISTOR		C018	1-216-864-11	RES CHIP 0R 0603 1/16W	100-CR00JT16	
337		A	RESISTOR		C021	1-216-864-11	RES CHIP 0R 0603 1/16W	100-CR00JT16	
338		A	RESISTOR		L016	1-216-296-11	RES CHIP 0R 1206 1/8W	100-CR00JT08	
339		A	RESISTOR		L051	1-216-295-11	RES, CHIP 0R 0805 1/10W	100-CR00JT10	
340		A	RESISTOR		L052	1-216-295-11	RES, CHIP 0R 0805 1/10W	100-CR00JT10	
341		A	RESISTOR		L053	1-216-295-11	RES, CHIP 0R 0805 1/10W	100-CR00JT10	
342		A	RESISTOR		L054	1-216-295-11	RES, CHIP 0R 0805 1/10W	100-CR00JT10	
343		A	RESISTOR		L055	1-216-295-11	RES, CHIP 0R 0805 1/10W	100-CR00JT10	
344		A	RESISTOR		L056	1-216-295-11	RES, CHIP 0R 0805 1/10W	100-CR00JT10	
345		A	RESISTOR		L063	1-216-295-11	RES CHIP 0R 0805 1/10W	100-CR00JT10	
346		A	RESISTOR		L064	1-216-295-11	RES CHIP 0R 0805 1/10W	100-CR00JT10	
347		A	RESISTOR		R001	1-216-809-11	RES CHIP 100R 0603 1/16W	100-C101JT16	
348		A	RESISTOR		R002	1-216-809-11	RES CHIP 100R 0603 1/16W	100-C101JT16	
349		A	RESISTOR		R003	1-216-825-11	RES CHIP 2.2K 0603 1/16W	100-C222JT16	
350		A	RESISTOR		R004	1-216-825-11	RES CHIP 2.2K 0603 1/16W	100-C222JT16	
351		A	RESISTOR		R005	1-216-825-11	RES CHIP 2.2K 0603 1/16W	100-C222JT16	
352		A	RESISTOR		R006	1-216-825-11	RES CHIP 2.2K 0603 1/16W	100-C222JT16	
353		A	RESISTOR		R007	1-216-833-11	RES CHIP 10K 0603 1/16W	100-C103JT16	
354		A	RESISTOR		R009	1-216-809-11	RES CHIP 100R 0603 1/16W	100-C101JT16	
355		A	RESISTOR		R010	1-216-809-11	RES CHIP 100R 0603 1/16W	100-C101JT16	
356		A	RESISTOR		R011	1-216-833-11	RES CHIP 10K 0603 1/16W	100-C103JT16	
357		A	RESISTOR		R012	1-216-624-11	RES CHIP 75R 0603 1/16W	100-C750JT16	
358		A	RESISTOR		R013	1-216-624-11	RES CHIP 75R 0603 1/16W	100-C750JT16	
359		A	RESISTOR		R014	1-216-624-11	RES CHIP 75R 0603 1/16W	100-C750JT16	
360		A	RESISTOR		R015	1-216-624-11	RES CHIP 75R 0603 1/16W	100-C750JT16	
361		A	RESISTOR		R016	1-216-624-11	RES CHIP 75R 0603 1/16W	100-C750JT16	
362		A	RESISTOR		R017	1-216-624-11	RES CHIP 75R 0603 1/16W	100-C750JT16	
363		A	RESISTOR		R018	1-216-864-11	RES CHIP 0R 0603 1/16W	100-CR00JT16	

NO.	#	Board	Type	!/*	REF. NO.	PART NO.	DESCRIPTION	REMARK	DIFFERENCE
364		A	RESISTOR		R020	1-216-841-11	RES CHIP 47K 0603 1/16W	100-C473JT16	
365		A	RESISTOR		R021	1-216-841-11	RES CHIP 47K 0603 1/16W	100-C473JT16	
366		A	RESISTOR		R024	1-216-821-11	RES CHIP 1K 0603 1/16W	100-C102JT16	
367		A	RESISTOR		R025	1-216-864-11	RES CHIP 0R 0603 1/16W	100-CR00JT16	
368		A	RESISTOR		R026	1-216-864-11	RES CHIP 0R 0603 1/16W	100-CR00JT16	
369		A	RESISTOR		R027	1-216-864-11	RES CHIP 0R 0603 1/16W	100-CR00JT16	
370		A	RESISTOR		R031	1-216-864-11	RES CHIP 0R 0603 1/16W	100-CR00JT16	
371		A	RESISTOR		R032	1-216-809-11	RES CHIP 100R 0603 1/16W	100-C101JT16	
372		A	RESISTOR		R034	1-216-864-11	RES CHIP 0R 0603 1/16W	100-CR00JT16	
373		A	RESISTOR		R035	1-216-825-11	RES CHIP 2.2K 0603 1/16W	100-C222JT16	
374		A	RESISTOR		R036	1-216-864-11	RES CHIP 0R 0603 1/16W	100-CR00JT16	
375		A	RESISTOR		R037	1-216-825-11	RES CHIP 2.2K 0603 1/16W	100-C222JT16	
376		A	RESISTOR		R038	1-216-815-11	RES CHIP 330R 0603 1/16W	100-C331JT16	
377		A	RESISTOR		R039	1-216-850-11	RES CHIP 270K 0603 1/16W	100-C274JT16	
378		A	RESISTOR		R040	1-216-850-11	RES CHIP 270K 0603 1/16W	100-C274JT16	
379		A	RESISTOR		R041	1-216-850-11	RES CHIP 270K 0603 1/16W	100-C274JT16	
380		A	RESISTOR		R042	1-216-821-11	RES,CHIP 1K 0603 1/16W	100-C102JT16	
381		A	RESISTOR		R043	1-216-821-11	RES,CHIP 1K 0603 1/16W	100-C102JT16	
382		A	RESISTOR		R044	1-216-829-11	RES,CHIP 4.7K 0603 1/16W	100-C472JT16	
383		A	RESISTOR		R045	1-216-829-11	RES,CHIP 4.7K 0603 1/16W	100-C472JT16	
384		A	RESISTOR		R046	1-216-850-11	RES CHIP 270K 0603 1/16W	100-C274JT16	
385		A	RESISTOR		R047	1-216-813-11	RES CHIP 220R 0603 1/16W	100-C221JT16	
386		A	RESISTOR		R048	1-216-811-11	RES CHIP 150R 0603 1/16W	100-C151JT16	
387		A	RESISTOR		R049	1-244-284-1	RES CHIP 0.045R 1206 1/8W	100-C457JT08	
388		A	RESISTOR		R050	1-244-284-1	RES CHIP 0.045R 1206 1/8W	100-C457JT08	
389		A	RESISTOR		R051	1-216-829-11	RES,CHIP 4.7K 0603 1/16W	100-C472JT16	
390		A	RESISTOR		R052	1-216-829-11	RES,CHIP 4.7K 0603 1/16W	100-C472JT16	
391		A	RESISTOR		R053	1-216-829-11	RES,CHIP 4.7K 0603 1/16W	100-C472JT16	
392		A	RESISTOR		R055	1-216-829-11	RES,CHIP 4.7K 0603 1/16W	100-C472JT16	
393		A	RESISTOR		R058	1-216-809-11	RES CHIP 100R 0603 1/16W	100-C101JT16	

NO.	#	Board	Type	!/*	REF. NO.	PART NO.	DESCRIPTION	REMARK	DIFFERENCE
394		A	RESISTOR		R059	1-216-821-11	RES,CHIP 1K 0603 1/16W	100-C102JT16	
395		A	RESISTOR		R060	1-216-821-11	RES,CHIP 1K 0603 1/16W	100-C102JT16	
396		A	RESISTOR		R061	1-216-835-11	RES CHIP 15K 0603 1/16W	100-C153JT16	
397		A	RESISTOR		R062	1-216-833-11	RES,CHIP 10K 0603 1/16W	100-C103JT16	
398		A	RESISTOR		R063	1-216-821-11	RES,CHIP 1K 0603 1/16W	100-C102JT16	
399		A	RESISTOR		R064	1-216-624-11	RES CHIP 75R 0603 1/16W	100-C750JT16	
400		A	RESISTOR		R066	1-216-833-11	RES,CHIP 10K 0603 1/16W	100-C103JT16	
401		A	RESISTOR		R067	1-216-833-11	RES,CHIP 10K 0603 1/16W	100-C103JT16	
402		A	RESISTOR		R069	1-216-835-11	RES CHIP 15K 0603 1/16W	100-C153JT16	
403		A	RESISTOR		R071	1-216-833-11	RES,CHIP 10K 0603 1/16W	100-C103JT16	
404		A	RESISTOR		R072	1-216-833-11	RES,CHIP 10K 0603 1/16W	100-C103JT16	
405		A	RESISTOR		R074	1-216-829-11	RES,CHIP 4.7K 0603 1/16W	100-C472JT16	
406		A	RESISTOR		R075	1-216-833-11	RES,CHIP 10K 0603 1/16W	100-C103JT16	
407		A	RESISTOR		R078	1-216-833-11	RES,CHIP 10K 0603 1/16W	100-C103JT16	
408		A	RESISTOR		R079	1-216-833-11	RES,CHIP 10K 0603 1/16W	100-C103JT16	
409		A	RESISTOR		R081	1-216-833-11	RES,CHIP 10K 0603 1/16W	100-C103JT16	
410		A	RESISTOR		R082	1-216-833-11	RES,CHIP 10K 0603 1/16W	100-C103JT16	
411		A	RESISTOR		R085	1-216-833-11	RES,CHIP 10K 0603 1/16W	100-C103JT16	
412		A	RESISTOR		R086	1-216-833-11	RES,CHIP 10K 0603 1/16W	100-C103JT16	
413		A	RESISTOR		R088	1-216-830-11	RES CHIP 5.6K 0603 1/16W	100-C562JT16	
414		A	RESISTOR		R090	1-216-833-11	RES,CHIP 10K 0603 1/16W	100-C103JT16	
415		A	RESISTOR		R091	1-216-833-11	RES,CHIP 10K 0603 1/16W	100-C103JT16	
416		A	RESISTOR		R093	1-216-833-11	RES,CHIP 10K 0603 1/16W	100-C103JT16	
417		A	RESISTOR		R094	1-216-829-11	RES,CHIP 4.7K 0603 1/16W	100-C472JT16	
418		A	RESISTOR		R095	1-216-821-11	RES CHIP 1K 0603 1/16W	100-C1001IT16	
419		A	RESISTOR		R096	1-216-825-11	RES CHIP 2.2K 0603 1/16W	100-C222JT16	
420		A	RESISTOR		R097	1-216-829-11	RES,CHIP 4.7K 0603 1/16W	100-C472JT16	
421		A	RESISTOR		R098	1-216-829-11	RES,CHIP 4.7K 0603 1/16W	100-C472JT16	
422		A	RESISTOR		R101	Pending	RES CHIP 931R 0603 1/16W	100-C9310IT16	
423		A	RESISTOR		R102	1-216-810-11	RES CHIP 121R 0603 1/16W	100-C1210IT16	
424		A	RESISTOR		R103	1-216-803-11	RES CHIP 33R 0603 1/16W	100-C330JT16	
425		A	RESISTOR		R104	1-216-803-11	RES CHIP 33R 0603 1/16W	100-C330JT16	
426		A	RESISTOR		R105	1-216-803-11	RES CHIP 33R 0603 1/16W	100-C330JT16	

NO.	#	Board	Type	!/*	REF. NO.	PART NO.	DESCRIPTION	REMARK	DIFFERENCE
427		A	RESISTOR		R107	1-216-833-11	RES,CHIP 10K 0603 1/16W	100-C103JT16	
428		A	RESISTOR		R108	1-216-809-11	RES CHIP 100R 0603 1/16W	100-C101JT16	
429		A	RESISTOR		R109	1-216-833-11	RES,CHIP 10K 0603 1/16W	100-C103JT16	
430		A	RESISTOR		R110	1-216-809-11	RES CHIP 100R 0603 1/16W	100-C101JT16	
431		A	RESISTOR		R111	1-216-850-11	RES CHIP 270K 0603 1/16W	100-C274JT16	
432		A	RESISTOR		R113	1-216-295-11	RES, CHIP 0R 0805 1/10W	100-CR00JT10	
433		A	RESISTOR		R115	1-216-833-11	RES,CHIP 10K 0603 1/16W	100-C103JT16	
434		A	RESISTOR		R116	1-216-833-11	RES,CHIP 10K 0603 1/16W	100-C103JT16	
435		A	RESISTOR		R118	Pending	RES,CHIP 8.45K 0603 1/16W	100-C8451IT16	
436		A	RESISTOR		R122	1-216-841-11	RES CHIP 47K 0603 1/16W	100-C473JT16	
437		A	RESISTOR		R123	1-216-821-11	RES CHIP 1K 0603 1/16W	100-C1001IT16	
438		A	RESISTOR		R124	1-216-825-11	RES,CHIP 2.2K 0603 1/16W	100-C222JT16	
439		A	RESISTOR		R125	1-216-825-11	RES,CHIP 2.2K 0603 1/16W	100-C222JT16	
440		A	RESISTOR		R126	1-216-829-11	RES,CHIP 4.7K 0603 1/16W	100-C472JT16	
441		A	RESISTOR		R127	1-216-829-11	RES,CHIP 4.7K 0603 1/16W	100-C472JT16	
442		A	RESISTOR		R128	1-216-829-11	RES,CHIP 4.7K 0603 1/16W	100-C472JT16	
443		A	RESISTOR		R129	1-216-829-11	RES,CHIP 4.7K 0603 1/16W	100-C472JT16	
444		A	RESISTOR		R131	1-216-829-11	RES,CHIP 4.7K 0603 1/16W	100-C472JT16	
445		A	RESISTOR		R132	1-216-829-11	RES,CHIP 4.7K 0603 1/16W	100-C472JT16	
446		A	RESISTOR		R133	1-216-829-11	RES,CHIP 4.7K 0603 1/16W	100-C472JT16	
447		A	RESISTOR		R134	1-216-833-11	RES,CHIP 10K 0603 1/16W	100-C103JT16	
448		A	RESISTOR		R135	1-216-833-11	RES,CHIP 10K 0603 1/16W	100-C103JT16	
449		A	RESISTOR		R136	1-216-864-11	RES CHIP 0R 0603 1/16W	100-CR00JT16	
450		A	RESISTOR		R137	1-216-864-11	RES CHIP 0R 0603 1/16W	100-CR00JT16	
451		A	RESISTOR		R138	1-216-829-11	RES,CHIP 4.7K 0603 1/16W	100-C472JT16	
452		A	RESISTOR		R139	1-216-809-11	RES CHIP 100R 0603 1/16W	100-C101JT16	
453		A	RESISTOR		R140	1-216-829-11	RES,CHIP 4.7K 0603 1/16W	100-C472JT16	
454		A	RESISTOR		R141	1-216-809-11	RES CHIP 100R 0603 1/16W	100-C101JT16	
455		A	RESISTOR		R142	1-216-833-11	RES,CHIP 10K 0603 1/16W	100-C103JT16	
456		A	RESISTOR		R143	1-216-803-11	RES CHIP 33R 0603 1/16W	100-C330JT16	
457		A	RESISTOR		R144	1-216-829-11	RES,CHIP 4.7K 0603 1/16W	100-C472JT16	
458		A	RESISTOR		R145	1-216-829-11	RES,CHIP 4.7K 0603 1/16W	100-C472JT16	
459		A	RESISTOR		R146	1-216-829-11	RES,CHIP 4.7K 0603 1/16W	100-C472JT16	

NO.	#	Board	Type	!/*	REF. NO.	PART NO.	DESCRIPTION	REMARK	DIFFERENCE
460		A	RESISTOR		R147	1-216-825-11	RES,CHIP 2.2K 0603 1/16W	100-C222JT16	
461		A	RESISTOR		R148	1-216-817-11	RES,CHIP 470R 0603 1/16W	100-C471JT16	
462		A	RESISTOR		R149	1-216-833-11	RES,CHIP 10K 0603 1/16W	100-C103JT16	
463		A	RESISTOR		R150	1-216-841-11	RES CHIP 47K 0603 1/16W	100-C473JT16	
464		A	RESISTOR		R151	1-216-829-11	RES,CHIP 4.7K 0603 1/16W	100-C472JT16	
465		A	RESISTOR		R152	1-216-833-11	RES,CHIP 10K 0603 1/16W	100-C103JT16	
466		A	RESISTOR		R154	1-216-829-11	RES,CHIP 4.7K 0603 1/16W	100-C472JT16	
467		A	RESISTOR		R156	1-216-809-11	RES CHIP 100R 0603 1/16W	100-C101JT16	
468		A	RESISTOR		R157	1-216-864-11	RES CHIP 0R 0603 1/16W	100-CR00JT16	
485		A	RESISTOR		R158	1-216-864-11	RES CHIP 0R 0603 1/16W	100-CR00JT16	
469		A	RESISTOR		R159	1-216-857-11	RES CHIP 1M 0603 1/16W	100-C105JT16	
486		A	RESISTOR		R160	1-216-850-11	RES CHIP 270K 0603 1/16W	100-C274JT16	
470		A	RESISTOR		RP001	1-233-415-11	RES CHIP ARRAY 10K 1/16W	166-010103T	
471		A	RESISTOR		RP002	1-233-415-11	RES CHIP ARRAY 10K 1/16W	166-010103T	
472		A	RESISTOR		RP003	1-233-415-11	RES CHIP ARRAY 10K 1/16W	166-010103T	
473		A	RESISTOR		RP004	1-233-415-11	RES CHIP ARRAY 10K 1/16W	166-010103T	
234		A	SOCKET		IC021	Pending	IC,SOCKET	197-0448111	
481		A	SWITCH		SW001	Pending	SLIDE SW IP2T	202-K2209G9	
474		A	TRANSISTOR		Q001	8-729-054-61	TRANSISTOR,SST3904	170-SST3904	
475		A	TRANSISTOR		Q002	8-729-054-62	TRANSISTOR SI4808DY	160-SI4808DY	
476		A	TRANSISTOR		Q003	8-729-054-62	TRANSISTOR SI4808DY	160-SI4808DY	
477		A	TRANSISTOR		Q004	8-729-054-61	TRANSISTOR,SST3904	170-SST3904	
478		A	TRANSISTOR		Q005	8-729-054-60	TRANSISTOR,SST3906	170-SST3906	
479		A	TRANSISTOR		Q006	8-729-054-61	TRANSISTOR,SST3904	170-SST3904	
480		A	TRANSISTOR		Q007	8-729-054-61	TRANSISTOR,SST3904	170-SST3904	
484		A	TRANSISTOR		Q008	Pending	MOSFET-DUAL-N SI1902	160-190200T	
487		H	CONNECTOR		CN801	Pending	CONN, 12P	197-B12BPHK	
488		H	DIODE		D801	Pending	LED-CHIP BI-COLOR	153-1122S10	
489		H	DIODE		D802	Pending	LED-CHIP RED	153-19215S530	
490		H	DIODE		D803	Pending	LED-CHIP RED	153-19215S530	

NO.	#	Board	Type	!/*	REF. NO.	PART NO.	DESCRIPTION	REMARK	DIFFERENCE
491		H	SWITCH		SW801	1-571-374-11	TACT SW	202-HJTSSB2	
492		H	SWITCH		SW802	1-571-374-11	TACT SW	202-HJTSSB2	
493		H	SWITCH		SW803	1-571-374-11	TACT SW	202-HJTSSB2	
494		H	SWITCH		SW804	1-571-374-11	TACT SW	202-HJTSSB2	
495		H	SWITCH		SW805	1-571-374-11	TACT SW	202-HJTSSB2	
496		H	SWITCH		SW806	1-571-374-11	TACT SW	202-HJTSSB2	
497		H	SWITCH		SW807	1-571-374-11	TACT SW	202-HJTSSB2	
498		J	CAPACITOR		C701	1-126-791-11	CAP- EC 10UFZ 16V	120-10616SS	
499		J	CAPACITOR		C702	1-126-791-11	CAP- EC 10UFZ 16V	120-10616SS	
500		J	CONNECTOR		CN701	1-815-345-12	PHONE JACK	203-348P0CS2G	
501		J	CONNECTOR		CN702	Pending	CONN, 5P	197-B5BPHK	
502		J	CONNECTOR		CN703	Pending	CONN, 4P	197-S4BPHK	
503		J	RESISTOR		R701	1-215-401-11	CARBON RES 150R 1/6W	100-151	
504		J	RESISTOR		R702	1-215-401-11	CARBON RES 150R 1/6W	100-151	

9-978-694-01

Sony Corporation
Computer Display Division Company
Computer Display Div.

English
2001DL-Data
Made in Malaysia
© 2001.4
SDM-M81(E)
-44-