

# 50/125 $\mu\text{m}$ Multi-mode Optical Fiber

## SF-MM5

### Product Information

SAMSUNG 50/125  $\mu\text{m}$  multi-mode optical fiber is a graded index fiber with a 50  $\mu\text{m}$  core and 125  $\mu\text{m}$  cladding diameter. It is suitable for fiber optic networks based on Ethernet, Fibre Channel, FDDI, ATM, and Token Ring protocols. It offers superior performance and reliability for backbone, riser, and horizontal applications in premise networks.

**PI-1215**

ISSUED : 06/02

### FEATURES / BENEFITS

- Optimized for 850 nm and 1300 nm dual wavelength ranges
- Coated with a high performance dual acrylate coating for long-term reliability
- Excellent compatibility with any commercial fiber in legacy network systems

### APPLICATIONS

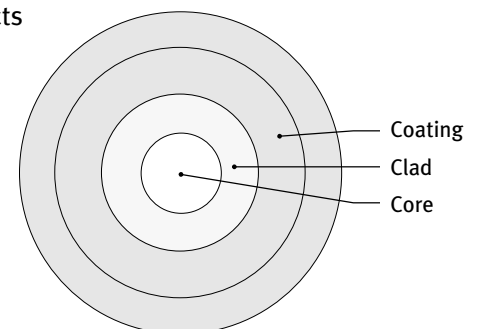
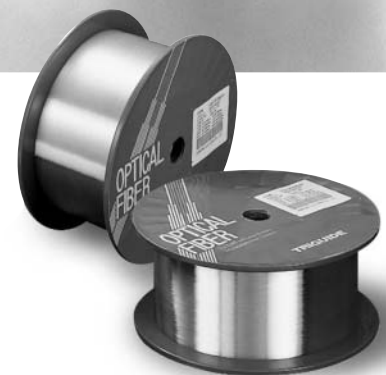
- Local Area Networks and campus networks with high data-rate voice, video and data communication systems using LEDs, VCSEL or Fabry-Perot lasers

### QUALITY TESTING

- Every spool of fiber is tested to assure top quality and performance
- All test procedures comply with ITU recommendations, IEC and EIA Standards

### DESIGN

- **Core** Center of the optical fiber, which carries the light
- **Clad** Confines the light to the core, using total internal reflection principles
- **Coating** A dual layer provides a microbend free environment, which also protects the optical fiber from external influences and absorbs shear forces



# 50/125 $\mu\text{m}$ Multi-mode Optical Fiber

## OPTICAL SPECIFICATIONS

### ATTENUATION AND BANDWIDTH

Parameters		Premium	Standard
Attenuation (dB/km)	@ 850 nm	$\leq 2.4$	$\leq 2.5$
	@ 1300 nm	$\leq 0.6$	$\leq 0.7$
Point Discontinuity (@ 850 nm & 1300 nm)		$\leq 0.10$ dB	
Bandwidth (MHz·km)	@ 850 nm	$\geq 600$	$\geq 400$
	@ 1300 nm	$\geq 1000$	$\geq 600$

Note) Other attenuation and bandwidth cells are available on request

### NUMERICAL APERTURE

- $0.200 \pm 0.015$

### MACROBENDING LOSS

Mandrel Diameter (mm)	Number of Turns	Wavelength (nm)	Induced Attenuation (dB)
75	100	850 / 1300	$\leq 0.5$

## DIMENSIONAL SPECIFICATIONS

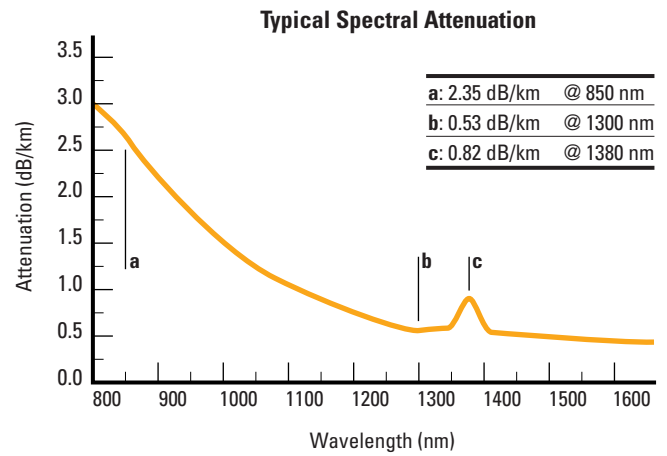
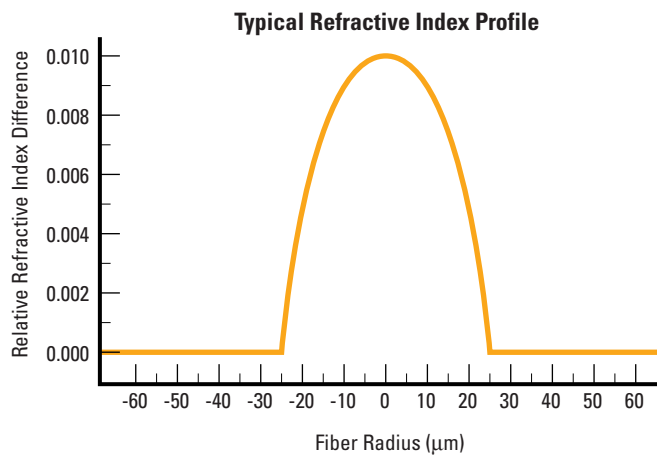
Parameters		Unit	Specification
Glass	Core Diameter	$\mu\text{m}$	$50.0 \pm 3.0$
	Clad Diameter	$\mu\text{m}$	$125.0 \pm 1.0$
	Clad Non-Circularity	%	$\leq 2.0$
	Core-Clad Concentricity Error	$\mu\text{m}$	$\leq 3.0$
Coating	Coating Diameter	$\mu\text{m}$	$245 \pm 10$
	Coating Concentricity Error	$\mu\text{m}$	$\leq 10.0$

## STANDARD FIBER LENGTH

- 1.1 ~ 8.8 km per spool

## MECHANICAL & ENVIRONMENTAL SPECIFICATIONS

Parameters	Specifications
Proof Test Level	≥ 100 kpsi
Temperature Dependence (-60°C ~ +85°C)	≤ 0.2 dB/km @ 850 nm & 1300 nm
Temp.-Humidity Cycling (-10°C ~ +85°C, 98% RH)	≤ 0.2 dB/km @ 850 nm & 1300 nm
Coating Strip Force	1.3 ~ 5.5 N



## ORDERING INFORMATION

Product Type	Description	Specification (x)
SF-MM5 - x	50/125 μm Multi-mode fiber	P : Premium S : Standard

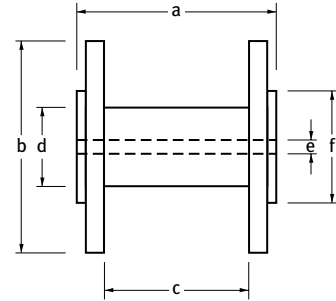
\* Change x in the left column with the code in the right column for your choice

## PACKAGING AND TEST CERTIFICATION

### PACKAGING

- Optical fiber is wound on a shipping spool for which dimensions are:

<b>a</b> = width of outside flanges	120 mm
<b>b</b> = flange diameter	248 mm
<b>c</b> = width of inside flanges	95 mm
<b>d</b> = barrel out-diameter	150 mm
<b>e</b> = bore diameter	25.4 + 0.5 / -0.1 mm
<b>f</b> = wing diameter	160 mm



### LABEL

- A label attached to each shipping spool contains at least the following information:

- Fiber I.D.
- Fiber Length
- Attenuation at 850 nm & 1300 nm
- Bandwidth at 850 nm & 1300 nm

### TEST CERTIFICATION

- One copy of a test certification sheet is enclosed in the shipping carton.

- The sheet contains at least the following information.

- Fiber I.D.
- Fiber Length
- Attenuation at 850 nm & 1300 nm
- Bandwidth at 850 nm & 1300 nm
- Numerical Aperture
- Geometries of the fiber and coating

[www.samsungfiberoptics.com](http://www.samsungfiberoptics.com)

#### Samsung Electronics Fiberoptics Division

7th Floor, Samsung Main Building 250, 2-Ga, Taepyung-Ro,  
Chung-Gu, Seoul, Korea 100-742  
Tel: +82-2-751-2529 Fax: +82-2-751-2687  
e-mail: fiberoptics@samsung.com

#### Samsung Telecommunications America

1130E, Arapaho Road, Richardson, TX 75081  
Toll Free Number: 1-877-ssoptic / 1-877-776-7842  
Fax: 1-972-761-7349

Please contact us for more information on Samsung Fiber Optic Products

© 2002 Samsung Electronics Co., Ltd. All Rights Reserved.

\*Samsung Electronics reserves the right to improve, enhance and modify the features and specifications of Samsung Electronics fiber optic products without prior notification. 020601 Printed in Korea.



SAMSUNG ELECTRONICS  
REGISTERED TO ISO9001  
CERTIFICATE NO.9243



SAMSUNG ELECTRONICS  
REGISTERED TO TL9000  
CERTIFICATE NO.9243



SAMSUNG ELECTRONICS  
REGISTERED TO ISO14001  
CERTIFICATE NO.9872



SAMSUNG ELECTRONICS  
REGISTERED TO ISO18001  
CERTIFICATE NO.9872