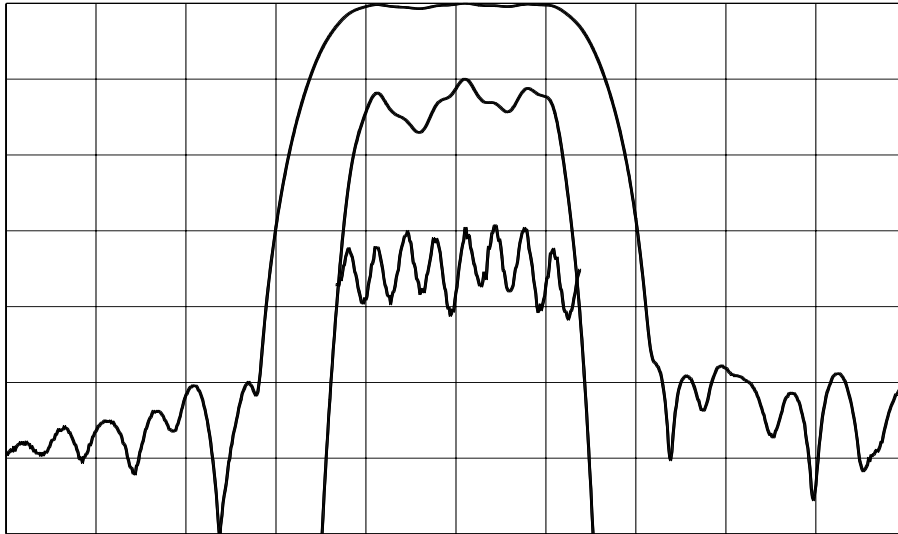


TYPICAL PERFORMANCE



Horizontal: 0.5 MHz/div Vertical (from top): Magnitude 10 dB/div
 Magnitude 1 dB/div
 Group Delay 100 ns./div

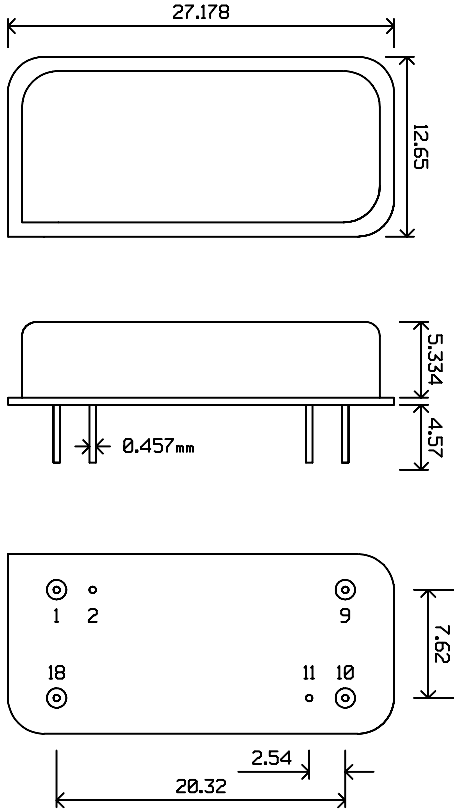
SPECIFICATION

Parameter	Min.	Typ.	Max.	Units.
Center Frequency (Fc) ¹		44.004		MHz
Insertion Loss(@ Fc) ²		18.2	19.5	dB
Relative attenuation ³				
Fc +/- 500 kHz		.5	1	dB
Fc +/- 660 kHz		2.5	3	dB
Fc +/- 900 kHz	12	16		dB
Fc +/- 1.16 MHz	40	50		dB
Rejection: 10-42.84 & 45.16 - 70 MHz	40	50		dB
Source and Load impedance		50		Ω
Group Delay ripple (FC +/- 650 kHz) ²		125	160	ns
Substrate Material	Quartz			
Operating temperature		25		$^{\circ}$ C

Notes:

1. Fixed reference. All specified bandwidths are centered at or referenced to this frequency.
2. When matched with optimum component values.
3. With respect to the Insertion Loss

PACKAGE OUTLINE

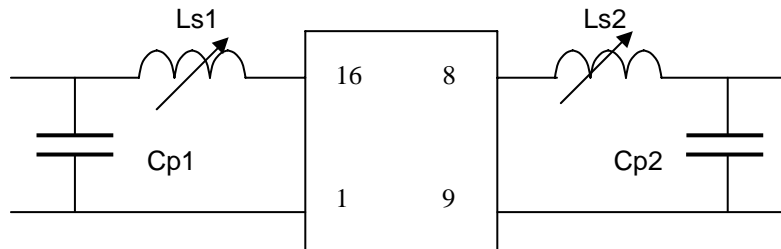


Units: mm

Pin Configuration:

Input: 18
 Input Return: 1
 Output: 9
 Output Return: 10
 Ground: 2, 11

MATCHING CIRCUIT



Typical component values: $Ls1 = 0.7 - 1.41 \mu H$ $Ls2 = 0.7 - 1.41 \mu H$
 $Cp1 = 56 pF$ $Cp2 = 47 pF$

Notes:

1. Variable inductors are adjusted for minimum insertion loss
2. Recommended Inductors are Coilcraft SLOT-10-3-01 and SLOT-10-3-02