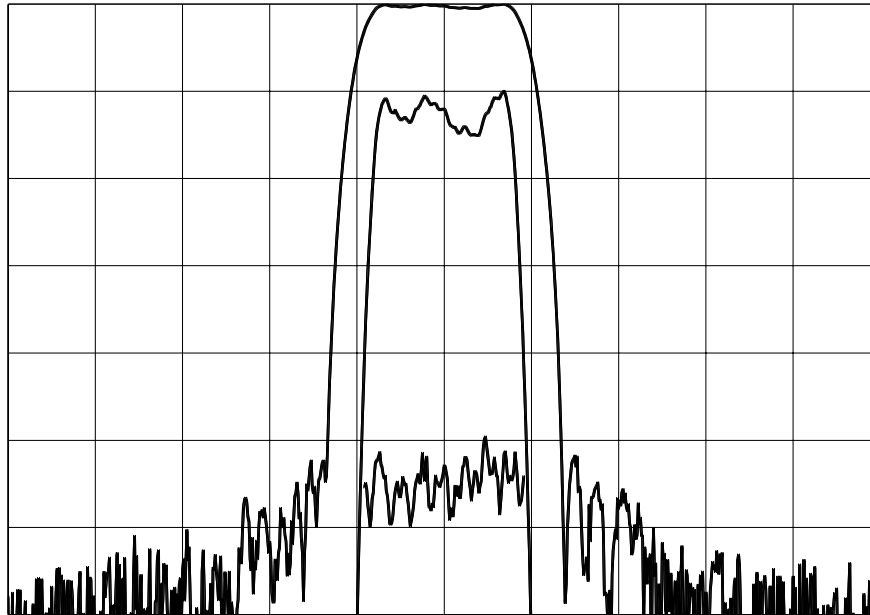


TYPICAL PERFORMANCE



Horizontal: 2.0 MHz/div Vertical (from top): Magnitude 10 dB/div
 Magnitude 1 dB/div
 Group Delay 50 ns./div

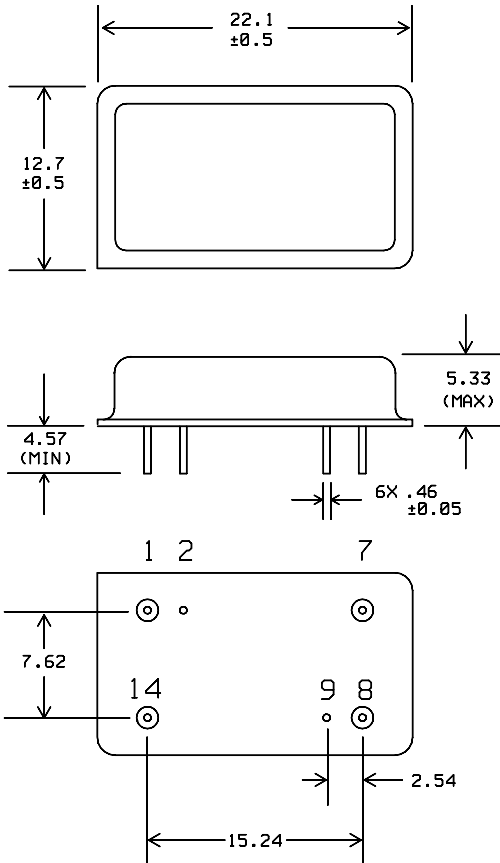
SPECIFICATION

Parameter	Min.	Typ.	Max.	Units.
Center Frequency (Fc) ¹	69.91	70.0	70.09	MHz
Insertion Loss at Fc		24	25	dB
1 dB Bandwidth	3	3.2		MHz
3 dB Bandwidth	3.5	3.6		MHz
40 dB Bandwidth		5.3	5.6	MHz
Passband Ripple		0.5	0.8	dB
Phase Ripple		3.0	8	deg p-p
Group Delay Ripple		50	100	ns p-p
Absolute Delay		2.3		us
Ultimate Rejection	50	55		dB
Source / Load Impedance	50			Ω
Substrate Material	Quartz			
Ambient Temperature		25		° C

Notes:

1: Mean value of the 3 dB Bandwidth

PACKAGE OUTLINE

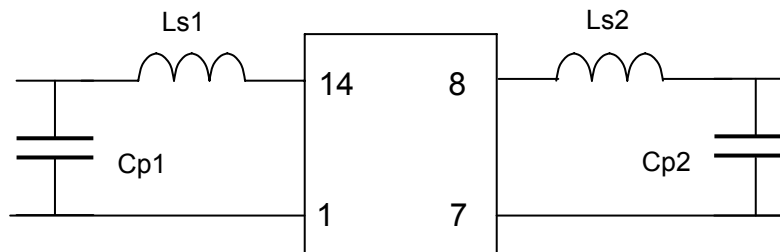


Units: mm

Pin Configuration:

Input:	14
Input Return:	1
Output:	8
Output Return:	7
Ground:	2,9

MATCHING CIRCUIT



Component values:

Ls1 = 607 nH.	Ls2 = 642 nH.	(Minimum Q = 45)
Cp1 = 51 nH.	Cp2 = 51 nH.	

Notes

1. Recommend use of 2% tolerance components.
2. Optimum values depend on board layout. Values intended as guide only.

ISO 9001
Registered

Micro Networks