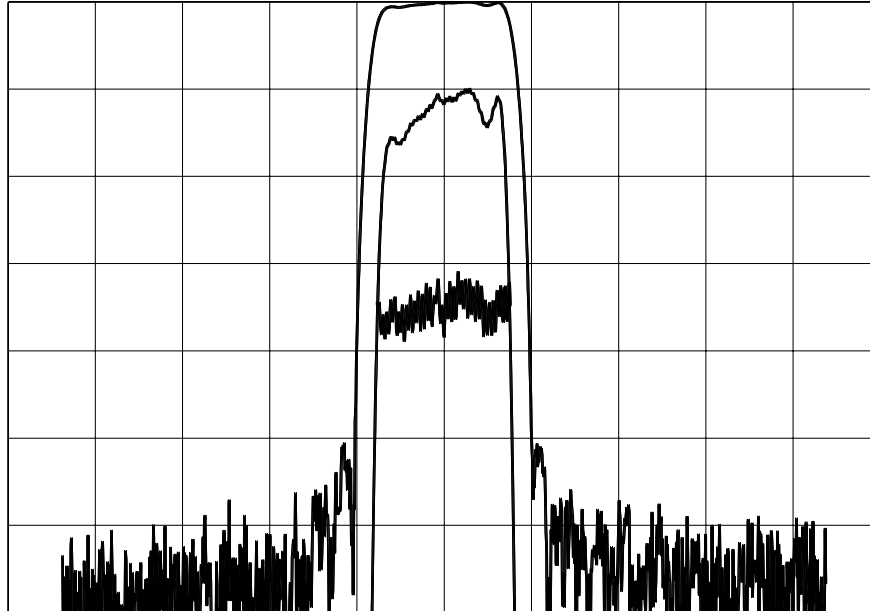


Micro Networks., 324 Clark Street, Worcester, MA 01606, USA tel: 508-852-5400, fax:508-852-8456, www.micronetworks.com

## TYPICAL PERFORMANCE



Horizontal: 4 MHz/div

Vertical (from top):

Magnitude

10 dB/div

Magnitude

1 dB/div

Group Delay

50 ns./div

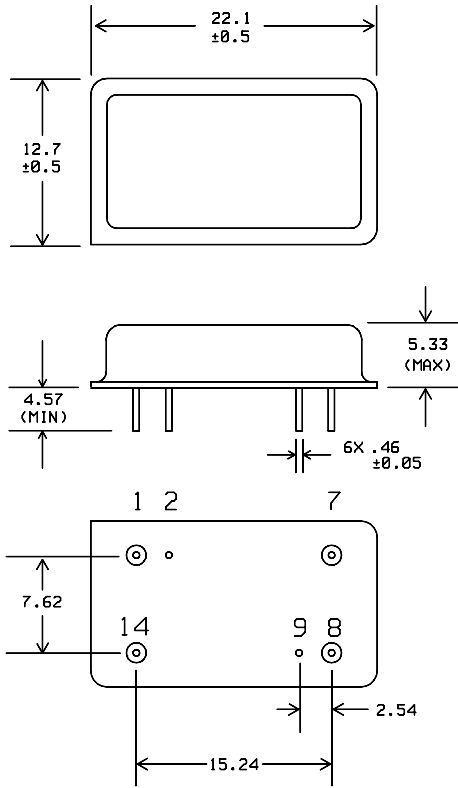
## SPECIFICATION

Parameter	Min.	Typ.	Max.	Units.
Center Frequency ( Fc ) <sup>1</sup>	69.9	70.0	70.1	MHz
Insertion Loss at Fc		23.6	25	dB
1 dB Bandwidth	5.6	5.80		MHz
3 dB Bandwidth	6.0	6.20		MHz
40 dB Bandwidth		8.0	8.4	MHz
Passband Ripple		0.6	0.8	dB
Phase Ripple		3	7	deg p-p
Group Delay Ripple		80	130	ns p-p
Absolute Delay		3		us
Ultimate Rejection	50	60		dB
Substrate Material	112 Lithium Tantalate			
Ambient Temperature		25		° C

Notes:

1: Mean Value of 3 dB points

**PACKAGE OUTLINE**

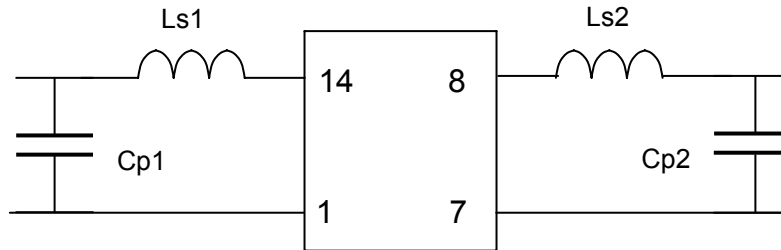


**Units:** mm

**Pin Configuration:**

- Input: 14
- Input Return: 1
- Output: 8
- Output Return: 7
- Ground: 2, 9

**MATCHING CIRCUIT**



**Component values:**

- Ls1 = 270 nH    Cp1 = 39 pF
  - Ls2 = 300 nH    Cp2 = 47 pF
- (Minimum Q = 45)

**Notes**

1. Recommend use of 2% tolerance components.
- 2: Optimum Values depend on board layout. Values intended as guide only.

