

THYRISTOR STACK (BRIDGE STACK)

39 DE 9097250 0002355 0

TOSHIBA (DISCRETE/OPTO)

1. STUD TYPE STACK

SINGLE-PHASE BRIDGE

SF300L4B1, SF300U4B2

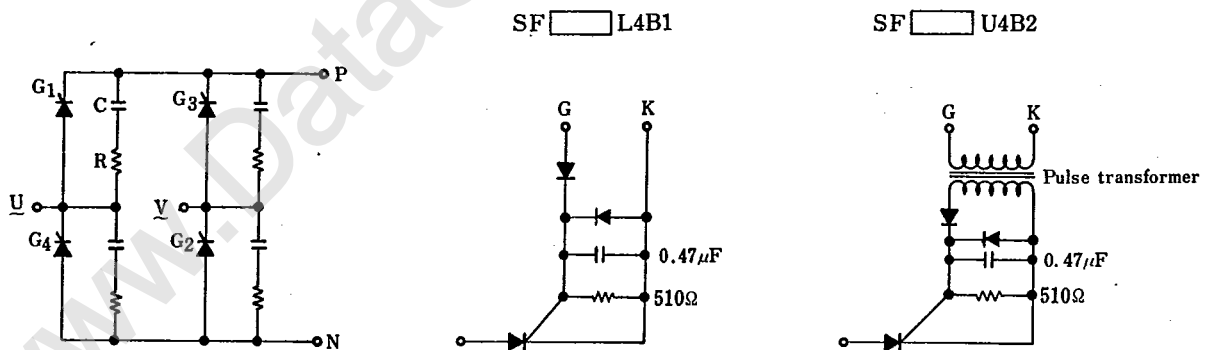
The SF300L4B1 and SF300U4B2 series thyristor stacks, with four thyristors, can be composed for single-phase control if a gate circuit is connected. Current capacities for lines on a 220-V/440-V input

voltage are available. They are most suitable for thyristor-inverter power supply, DC motor-drive converters, DC constant voltage and constant current control.

MAXIMUM RATINGS

Type	Line Voltage V_{RMS} (Vrms)	Repetitive Peak Off-State Voltage and Reverse Voltage V_{DRM}, V_{RRM} (V)	Output Current I_o (A) $T_a = 60^\circ C$		Peak One-Cycle Surge Current (Non-Repetitive) I_{TSM} (A)	
			Free Convection	Air Velocity 5m/s	1 Cycle	10 Cycle
SF16L4B1	220	800	16	27	200	110
SF30L4B1	220	800	33	54	600	330
SF50L4B1	220	800	48	98	1000	560
SF80L4B1	220	800	80	155	1600	1300
SF80U4B2	440	1600				
SF150L4B1	220	800	135	265	3200	1800
SF150U4B2	440	1600				
SF300L4B1	220	800	155	390	5000	3100
SF300U4B2	440	1600				

Note : 1. Circuit Diagram.



The stack with fuse is coded to the SF 4B3 series.

THYRISTOR STACK (BRIDGE STACK)

TOSHIBA (DISCRETE/OPTO)

39 DE 9097250 0002356 2

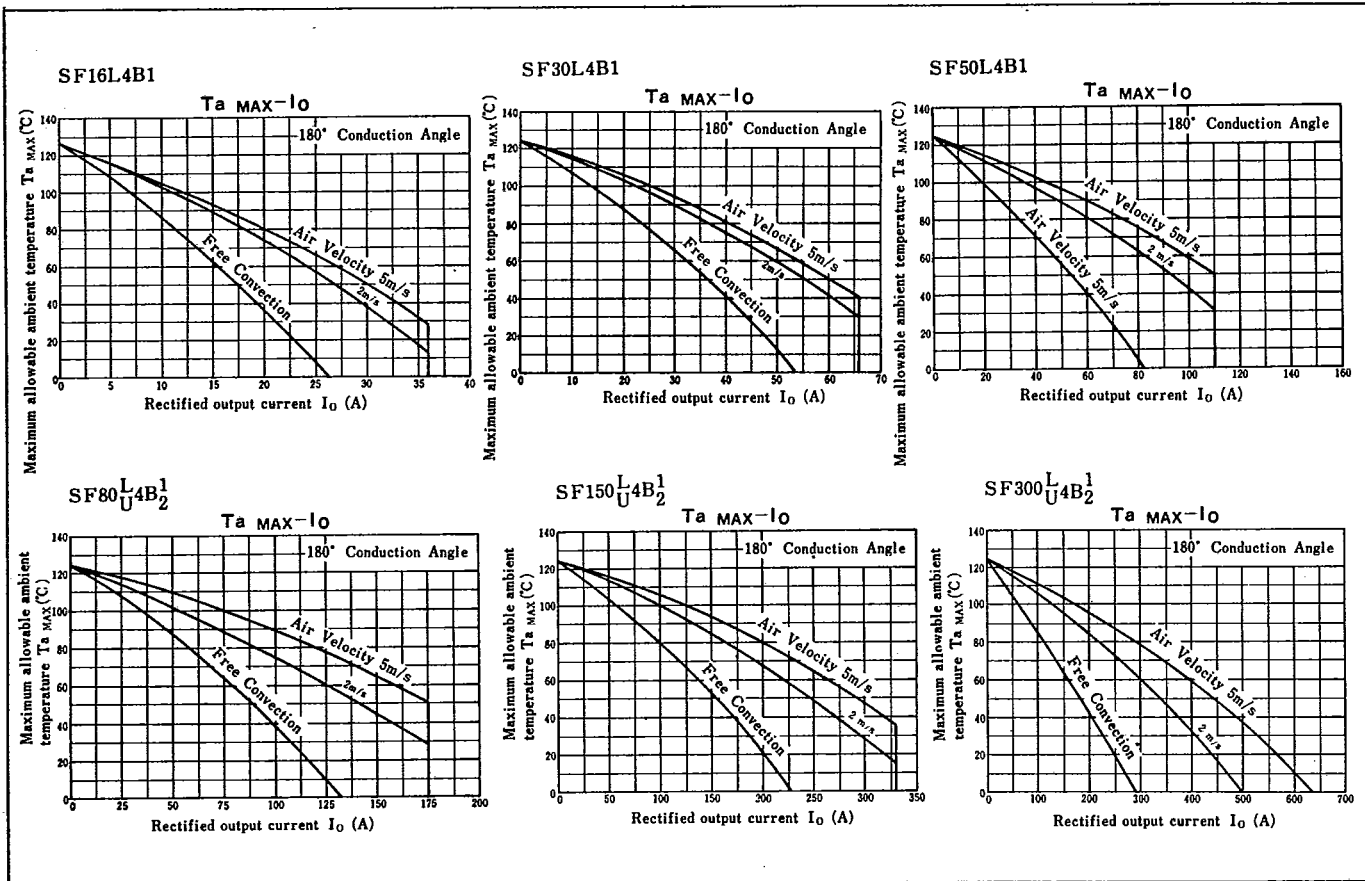


TABLE OF DIMENSIONS

Unit in mm

Type	L(MAX.)	L ₁	t	W(MAX.)	W ₁	H(MAX.)	H ₁	d	E
SF16L4B1	212	*192	6	244	224	170	50	6.5φ	4.5φ
SF30L4B1	212	*192	8	244	224	210	100	6.5	6.5
SF50L4B1	212	*192	8	244	224	210	100	6.5	6.5
SF80L _U 4B ₂ ¹	286	133	8	286	266	230	11F	6.5	6.5
SF150L _U 4B ₂ ¹	286	133	10	286	266	270	130	8.5	8.5
SF300L _U 4B ₂ ¹	286	133	10	286	266	270	130	8.5	8.5

