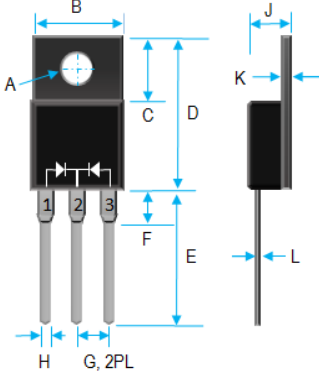


16A SUPER FAST RECOVERY RECTIFIER 50V-600V

	Value Inch[mm]	
	Dim	Min.
A	0.118 [3.0]	0.134 [3.4]
B	0.381 [9.7]	0.406 [10.3]
C	0.248 [6.3]	0.272 [6.9]
D	0.583 [14.8]	0.606 [15.4]
E	0.512 [13.0]	0.548 [13.9]
F	---	0.161 [4.1]
G	0.095 [2.41]	0.105 [2.67]
H	0.019 [0.50]	0.028 [0.7]
J	0.165 [4.2]	0.189 [4.8]
K	0.099 [2.5]	0.130 [3.3]
L	---	0.032 [0.8]

PRODUCT FEATURES

1. FLAMMABILITY CLASSIFICATION: 94V-0
2. GLASS PASSIVATED CHIP JUNCTION
3. LOW FORWARD VOLTAGE DROP
4. HIGH SURGE CURRENT CAPABILITY
5. LOW LOSSES
6. CASE: TRANSFER MOLDED, ITO-220AB
7. POLARITY: AS MARKED
8. WEIGHT: 1.70 GRAMS
9. LEADS: SOLDERABILITY PER MIL-STD-202 METHOD 208
10. RoHS, SUFFIX "-H" INDICATES HALOGEN FREE PARTS

MAXIMUM RATINGS AND ELECTRICAL CHARACTERISTICS RATINGS AT 25°C AMBIENT TEMPERATURE UNLESS OTHERWISE SPECIFIED STORAGE AND OPERATING TEMPERATURE RANGE -55°C TO +150°C. SINGLE PHASE, HALF WAVE, 60 HZ, RESISTIVE OR INDUCTIVE LOAD. FOR CAPACITIVE LOAD, DERATE CURRENT BY 20%.

RATINGS	SYMBOL	VALUE	UNITS
MAXIMUM AVERAGE FORWARD RECTIFIED CURRENT	I_O	16	A
PEAK FWD SURGE CURRENT, 8.3ms HALF SINE-WAVE SUPERIMPOSED ON RATED LOAD	I_{FSM}	125	A
TYPICAL THERMAL RESISTANCE (NOTE 1)	$R_{\theta jc}$	2.5	°C/W
MAXIMUM REVERSE CURRENT @ 25°C	I_R	5	uA
MAXIMUM REVERSE CURRENT @ 125°C	I_R	250	uA
MAXIMUM REVERSE RECOVERY TIME	T_{RR}	35	nS

1. THERMAL RESISTANCE JUNCTION TO CASE PER LEG MOUNTED ON HEAT SINK
2. REVERSE RECOVERY TEST CONDITIONS: $I_F=0.5A$, $I_R=1.0A$, $I_{RR}=0.25A$
3. MAXIMUM FORWARD VOLTAGE @ I_O DC

PART NUMBER	MAX RECURRENT PK REV VOLTAGE V_{RRM} (V)	MAX RMS VOLTAGE V_{RMS} (V)	MAX DC BLOCKING VOLTAGE V_{DC} (V)	MAX FWD VOLTAGE V_F (V)	MARKING
SF1605FCT	50	35	50	0.98	SF1605FCT
SF1610FCT	100	70	100	0.98	SF1610FCT
SF1620FCT	200	140	200	0.98	SF1620FCT
SF1640FCT	400	280	400	1.3	SF1640FCT
SF1660FCT	600	420	600	1.7	SF1660FCT

RATING AND CHARACTERISTIC CURVES

FIG.1-TYPICAL FORWARD CURRENT DERATING CURVE

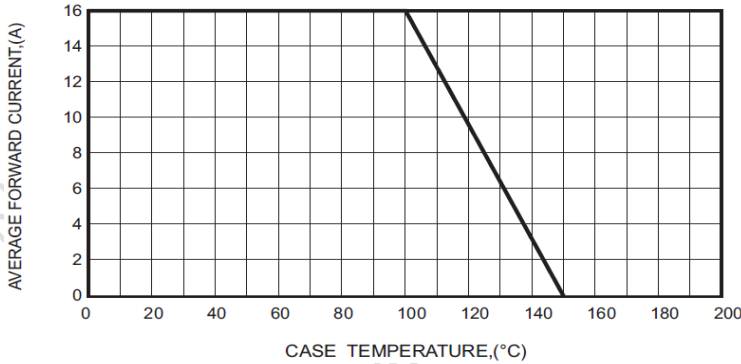


FIG.3-MAXIMUM NON-REPETITIVE FORWARD SURGE CURRENT

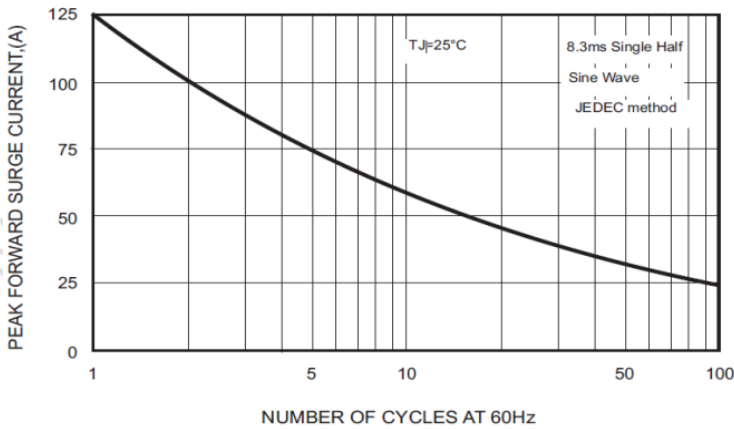
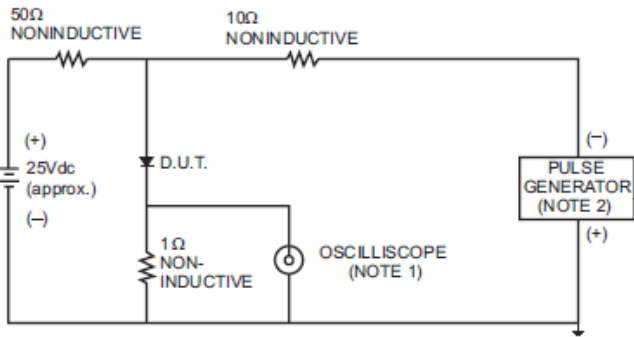


FIG.5- TEST CIRCUIT DIAGRAM AND REVERSE RECOVERY TIME CHARACTERISTICS



- NOTES: 1. Rise Time= 7ns max., Input Impedance= 1 megohm 22pF.
- 2. Rise Time= 10ns max., Source Impedance= 50 ohms.

FIG.2-TYPICAL FORWARD CHARACTERISTICS

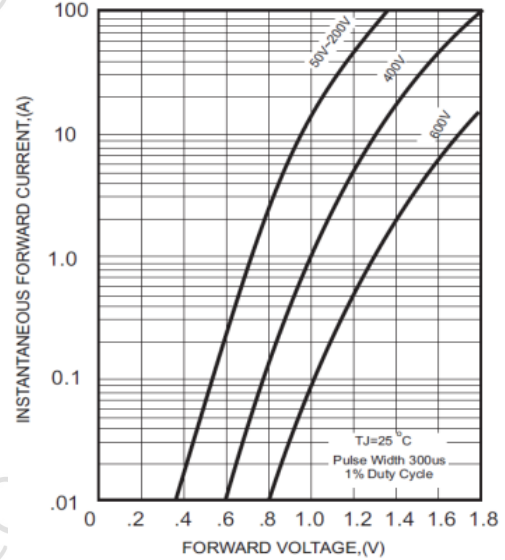


FIG.4 - TYPICAL REVERSE CHARACTERISTICS

