

**SF2000A-AQ Series**

Single Phase 250VAC

Inquiry

Common mode:Wide band/High attenuation  
Dood for High frequency

**Application**

For EMC Anechoic/Shielded Chamber

**Specifications**

Part No.	Rated Current	Weight	Dimensions [mm]											
			A	B	C	D	E	F	G	H	J	K	L	
SF2010A-AQ	10A	9.4kg	500	480	20	180	140	90	50	CTC25	30	300	M6	fig1
SF2020A-AQ	20A	9.4kg	500	480	20	180	140	90	50	CTC25	30	300	M6	
SF2030A-AQ	30A	9.4kg	500	480	20	180	140	90	50	CTC25	30	300	M6	
SF2050A-AQ	50A	22kg	670	650	20	230	190	100	50	CTC25	30	300	M6	
SF2100A-AQ	100A	39kg												fig2
Rated Voltage	250VAC max													
Leakage Current	1.1A max/250VAC 60Hz (Please use Insulation Transformer together)													
Ambient temp.	-20 up to 50 Deg. C													

fig1 (10-50A)

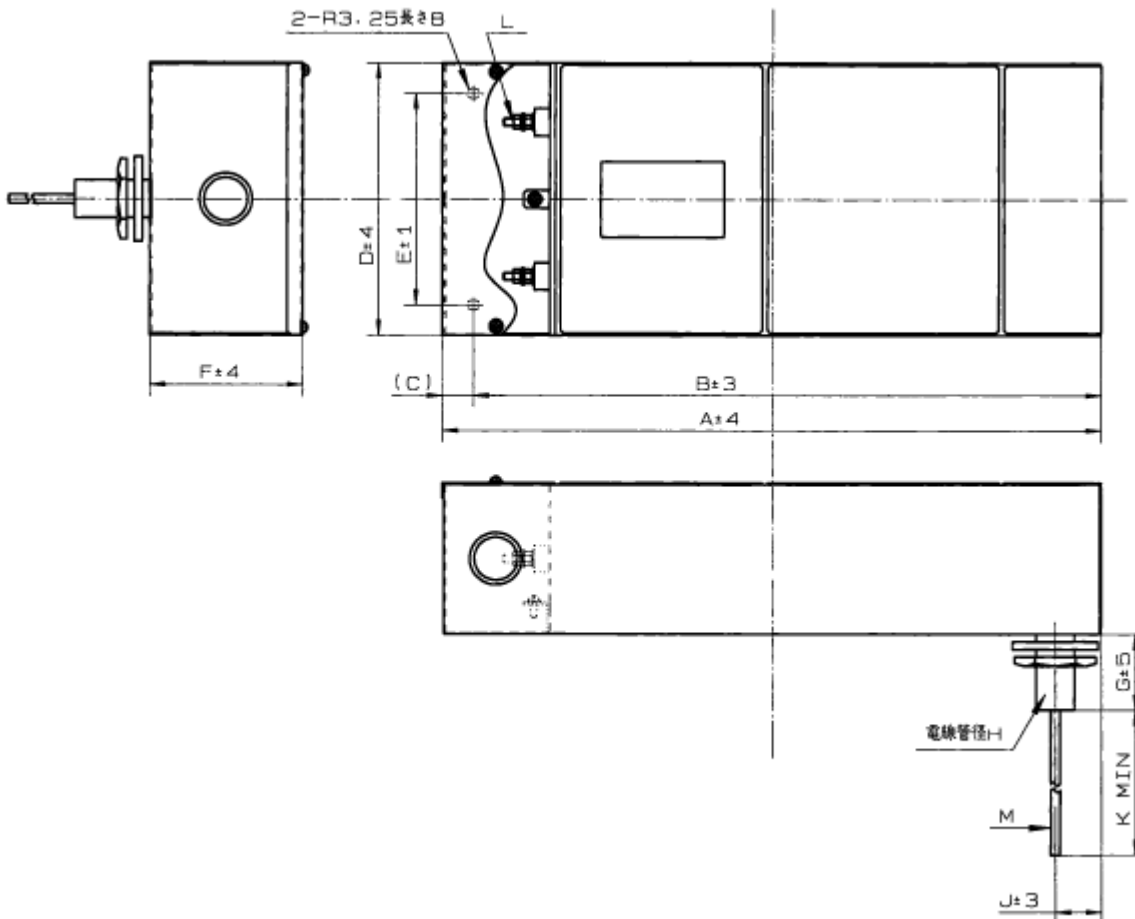
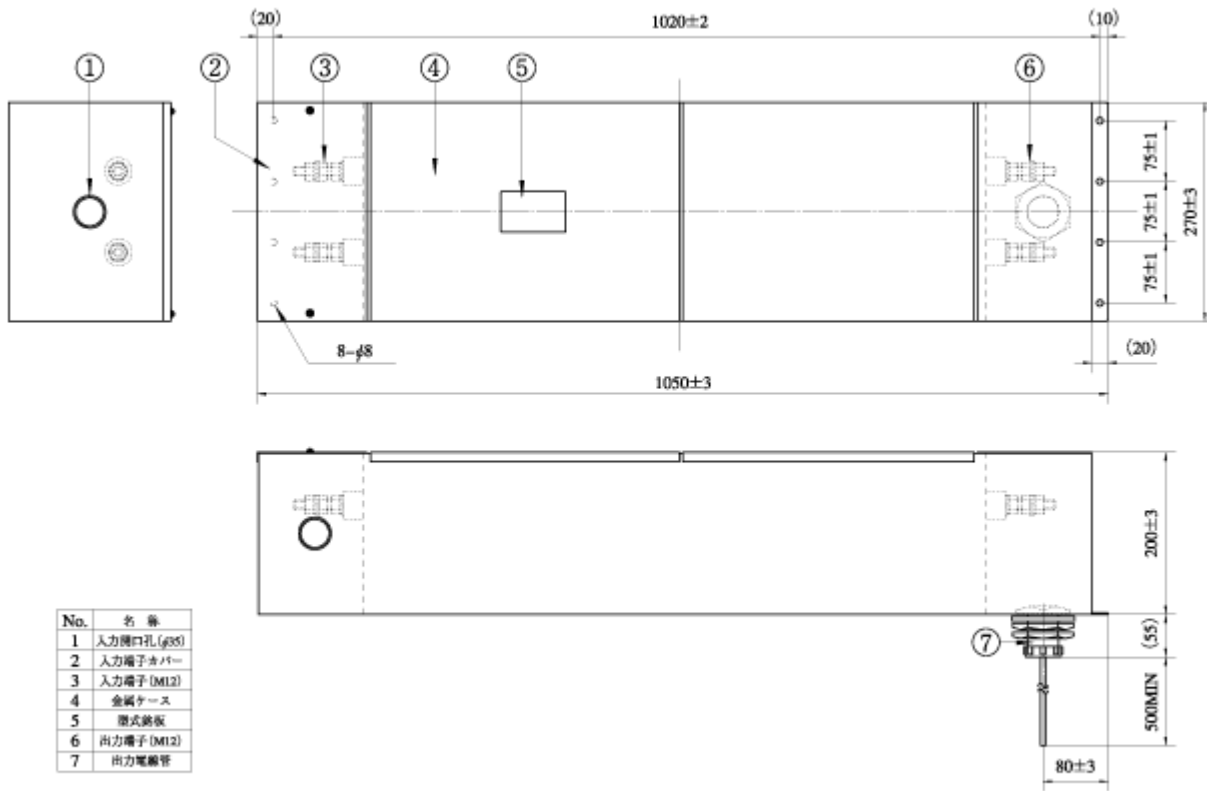


fig2 (100A)



## Frequency Data

