

SF2000A-AS Series

Single Phase 250VAC

Inquiry

Common mode:Wide band/High attenuation
Dood for High frequency

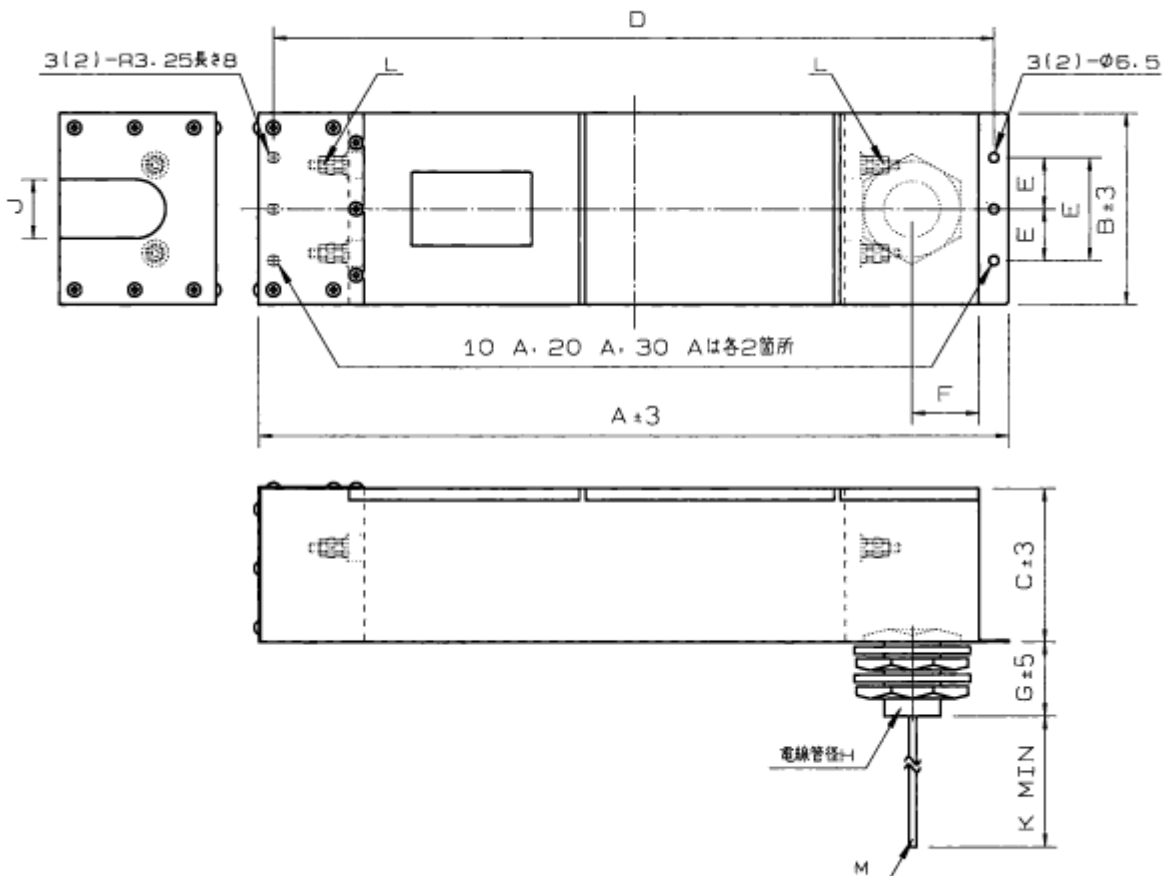
Application

For EMC Anechoic/Shielded Chamber

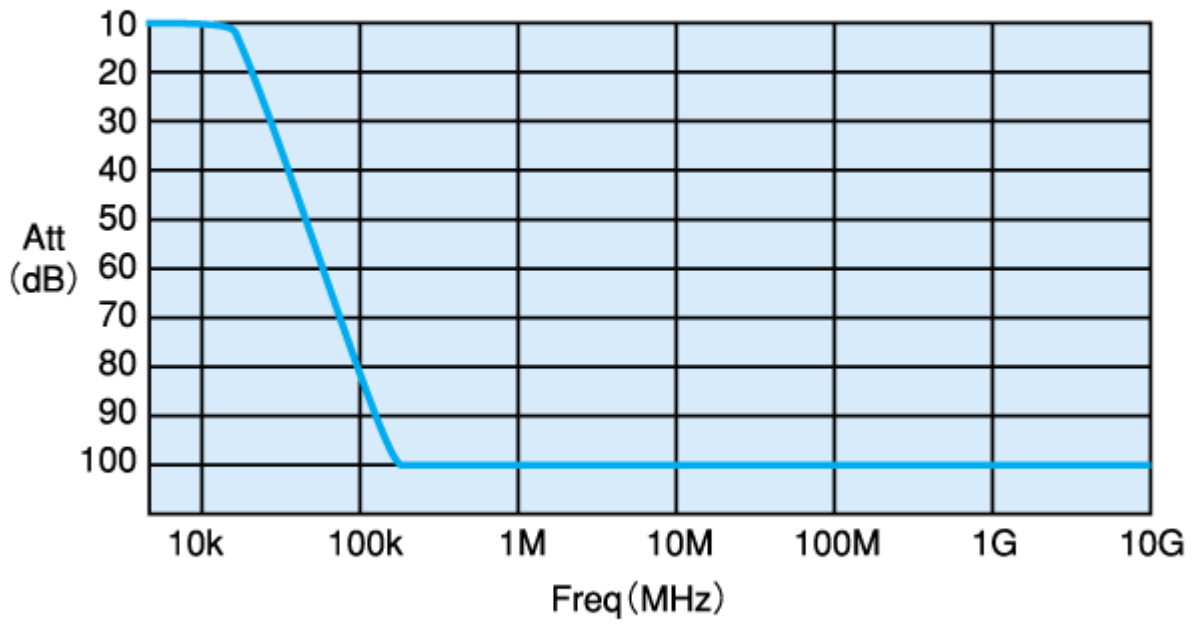
Specifications

Part No.	Rated Current	Leakage Current	Weight	Dimensions [mm]										
				A	B	C	D	E	F	G	H	J	K	L
SF2010A-AS	10A	155mA	5.3kg	490	100	75	475	40	35	50	CTC25	40	500	M4
SF2020A-AS	20A	155mA	5.3kg	490	100	75	475	40	35	50	CTC25	40	500	M4
SF2030A-AS	30A	155mA	5.5kg	490	100	75	475	40	35	50	CTC25	40	500	M5
SF2050A-AS	50A	390mA	8.8kg	500	130	105	480	35	45	50	CTC39	40	500	M6
SF2100A-AS	100A	435mA	16.5kg	660	180	125	640	60	45	50	CTC39	40	500	M10
Rated Voltage	250VAC max													
Leakage Current	(Please use Insulation Transformer together)													
Ambient temp.	-20 up to 50 Deg. C													

fig



Frequency Data



► Products li