

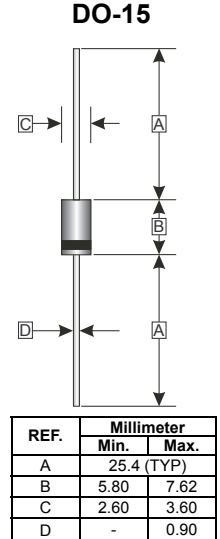
RoHS Compliant Product  
 A suffix of "-C" specifies halogen & lead-free

**FEATURES**

- Low forward voltage drop
- High current capability
- High reliability
- High surge current capability

**PACKAGING INFORMATION**

- Case: Molded plastic
- Epoxy: UL 94V-0 rate flame retardant
- Lead: Axial leads, solderable per MIL-STD-202, method 208 guaranteed
- Polarity: Color band denotes cathode end
- Mounting position: Any
- Weight: 0.4300 grams (approximately)



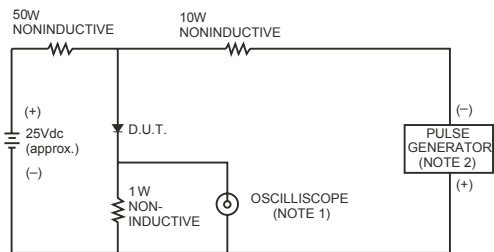
**MAXIMUM RATINGS AND ELECTRICAL CHARACTERISTICS**

Rating 25°C ambient temperature unless otherwise specified.  
 Single phase half wave, 60Hz, resistive or inductive load.  
 For capacitive load, derate current by 20%.

PARAMETERS	SYMBOL	PART NUMBERS					UNITS	TESTING CONDITIONS
		SF21	SF22	SF23	SF24	SF25		
Recurrent Reverse Voltage (Max.)	$V_{RRM}$	50	100	200	400	600	V	
RMS Voltage (Max.)	$V_{RMS}$	35	70	140	280	420	V	
DC Blocking Voltage (Max.)	$V_{DC}$	50	100	200	400	600	V	
Instantaneous Forward Voltage (Max.)	$V_F$	0.95		1.30	1.70	V	$I_F = 1 A$	
Average Forward Rectified Current (Max.)	$I_o$	2.0					A	0.375" (9.5mm) lead length @ $T_A = 55^\circ C$
Peak Forward Surge Current	$I_{FSM}$	50					A	8.3ms single half sine-wave superimposed on rated load (JEDEC method)
DC Reverse Current (Max.)	$I_R$	5.0					$\mu A$	$V_R = V_{DC}, T_A = 25^\circ C$
		50						$V_R = V_{DC}, T_A = 100^\circ C$
Reverse Recovery Time (Max.)	$T_{RR}$	35					nS	$I_F = 0.5A, I_R = 1.0A, I_{RR} = 0.25A$
Junction Capacitance (Typ.)	$C_J$	60					pF	f=1MHz and applied 4V DC reverse voltage
Storage Temperature Range	$T_{STG}$	-65 ~ 150					$^\circ C$	

**RATINGS AND CHARACTERISTIC CURVES (SF21 THRU SF25)**

FIG.1- TEST CIRCUIT DIAGRAM AND REVERSE RECOVERY TIME CHARACTERISTIC



NOTES: 1. Rise Time= 7ns max., Input Impedance= 1 megohm.22pF.  
2. Rise Time= 10ns max., Source Impedance= 50 ohms.

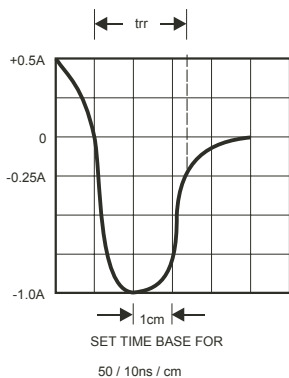


FIG.2-TYPICAL FORWARD CURRENT DERATING CURVE

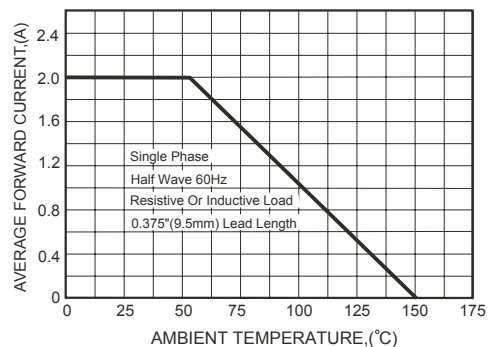


FIG.3-TYPICAL FORWARD CHARACTERISTICS

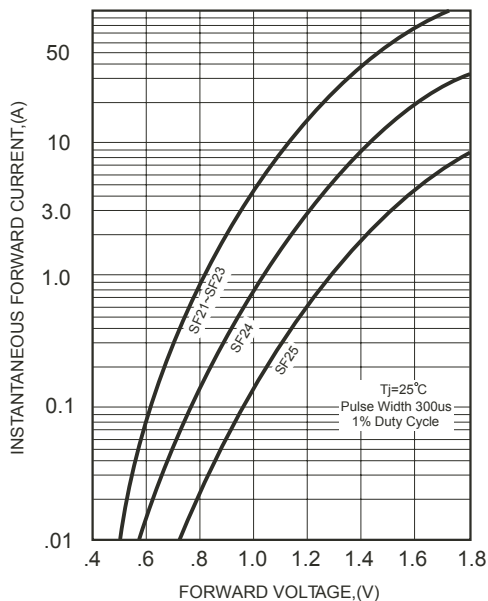


FIG.4-TYPICAL REVERSE CHARACTERISTICS

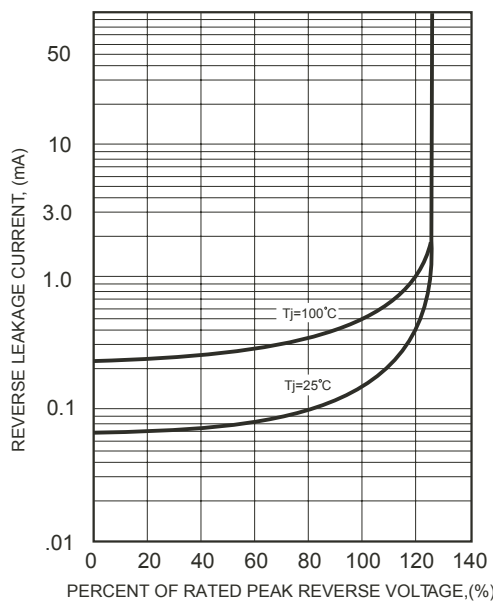


FIG.5-MAXIMUM NON-REPETITIVE FORWARD SURGE CURRENT

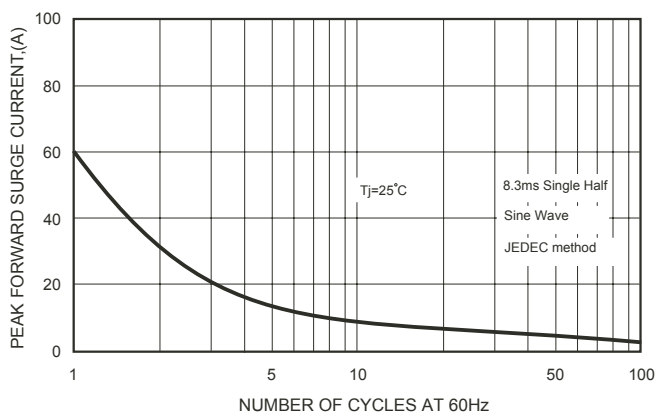


FIG.6-TYPICAL JUNCTION CAPACITANCE

