

SF3000A-AQ Series
3 Phase & 3 lines 250VAC

[Inquire](#)

Common mode:Wide band/High attenuation
Good for High frequency

Application

For EMC Anechoic/Shielded Chamber

Specifications

Part No.	Rated Current	Weight	Dimensions [mm]											
			A	B	C	D	E	F	G	H	J	K	L	
SF3010A-AQ	10A	14kg	620	600	20	270	115	100	50	CTC25	30	300	M6	fig1
SF3020A-AQ	20A	14kg	620	600	20	270	115	100	50	CTC25	30	300	M6	
SF3030A-AQ	30A	14kg	620	600	20	270	115	100	50	CTC25	30	300	M6	
SF3050A-AQ	50A	36kg	800	780	20	300	130	150	50	CTC39	40	300	M6	fig2
SF3100A-AQ	100A	44kg												
Rated Voltage	250VAC max													
Leakage Current	1.6A max/250VAC 60Hz (Please use Insulation Transformer together)													
Ambient temp.	-20 up to 50 Deg. C													

fig1 (10-50A)

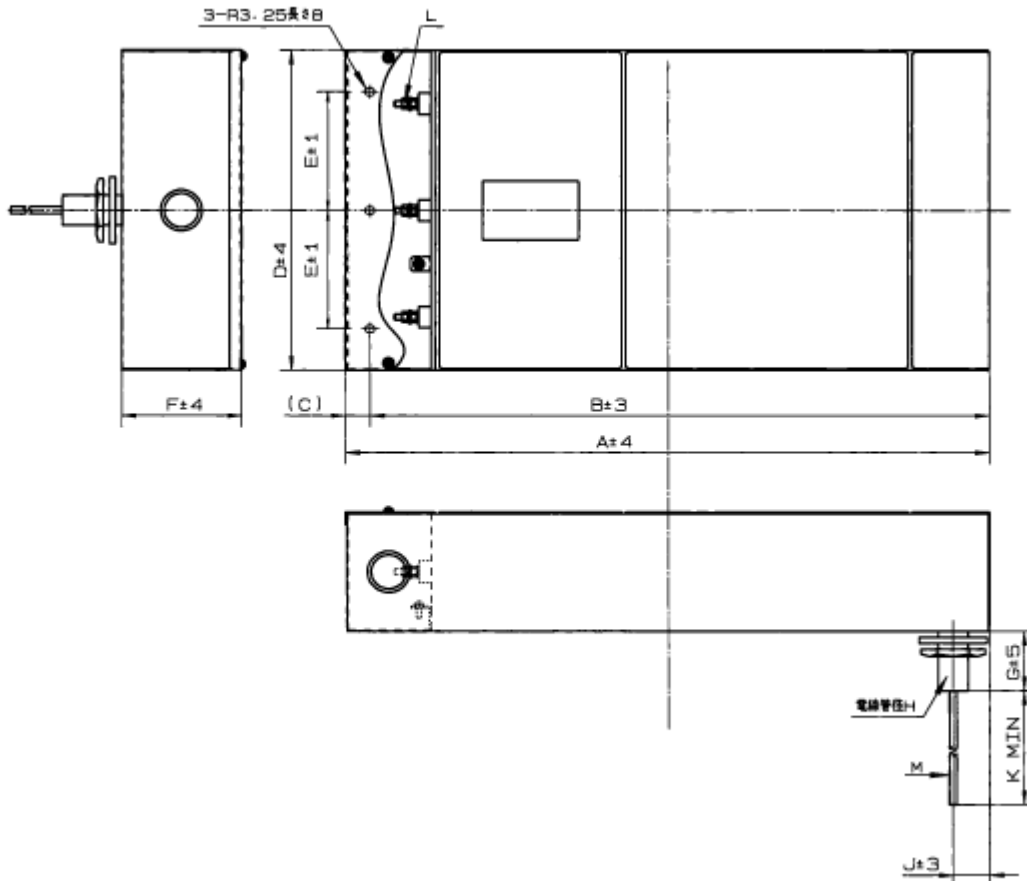
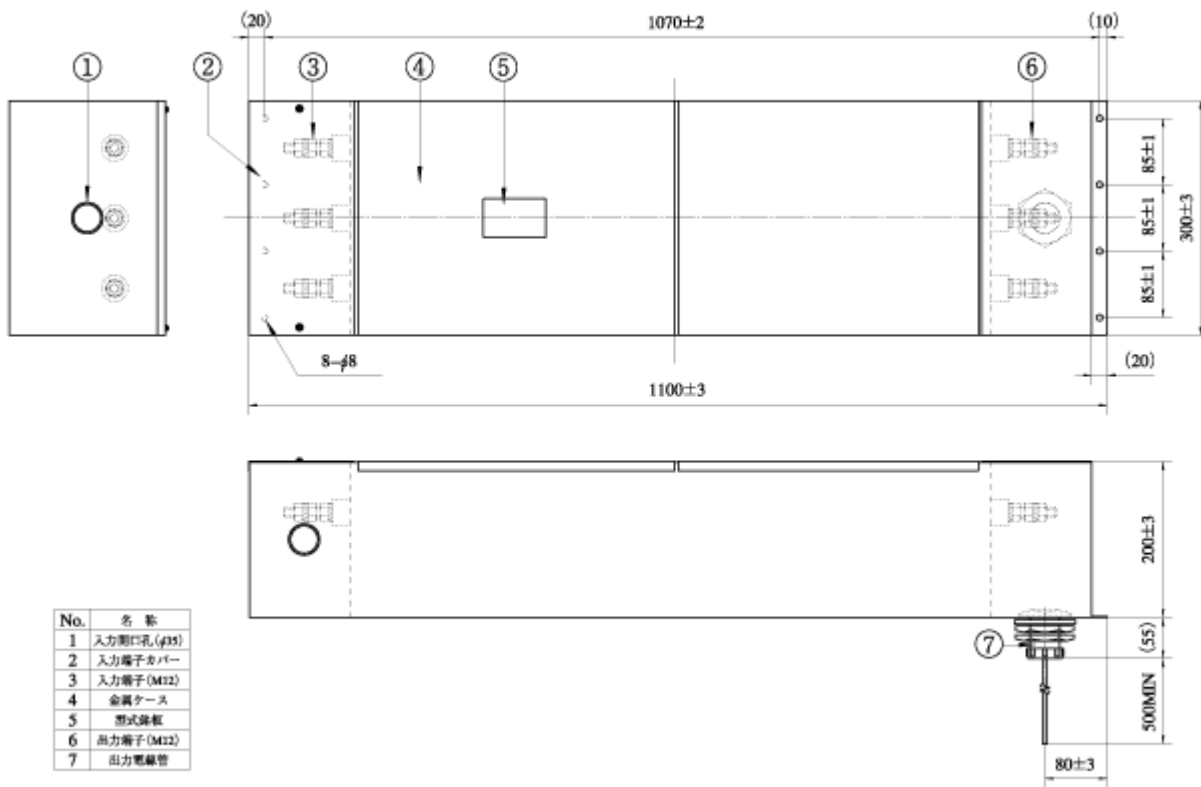


fig2 (100A)



Frequency Data

