

**SF3000A-AS Series**

3 Phase & 3 lines 250VAC

Inquiry

Common mode:Wide band/High attenuation  
Good for High frequency

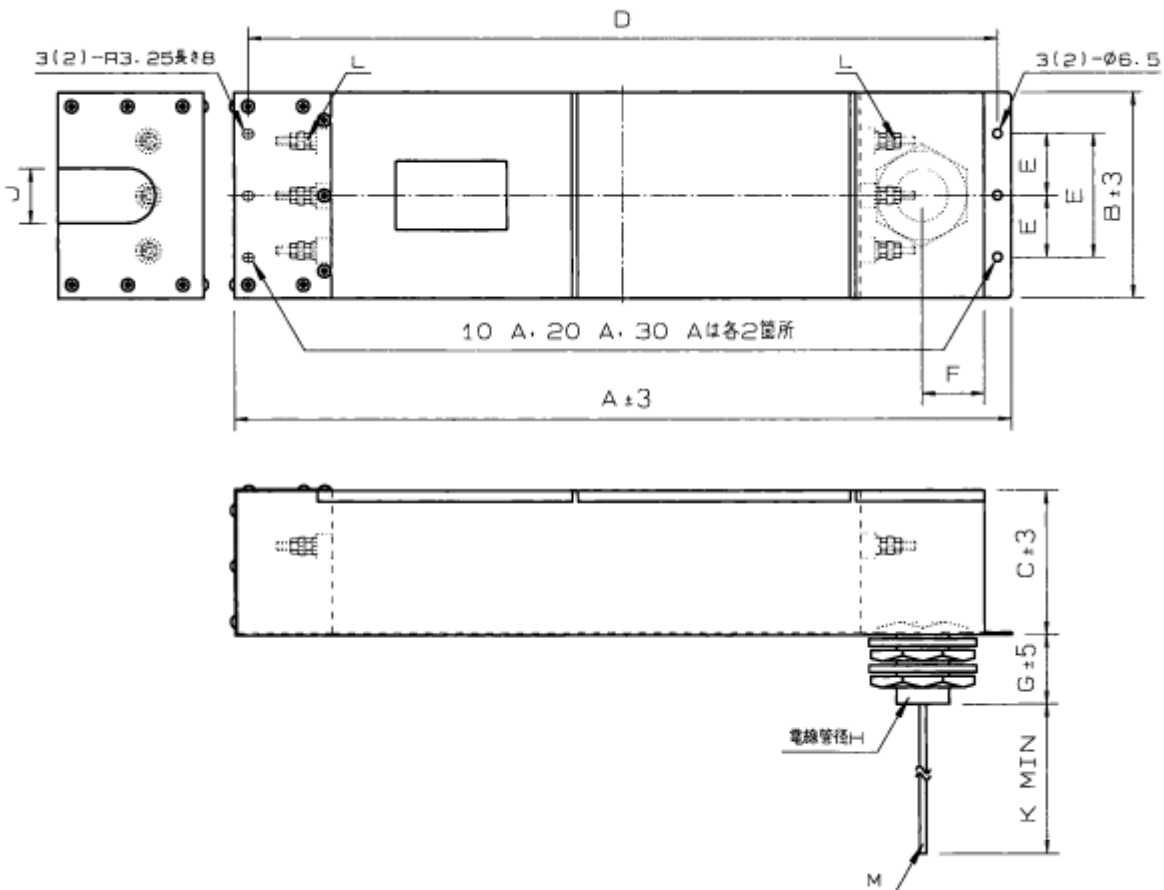
**Application**

For EMC Anechoic/Shielded Chamber

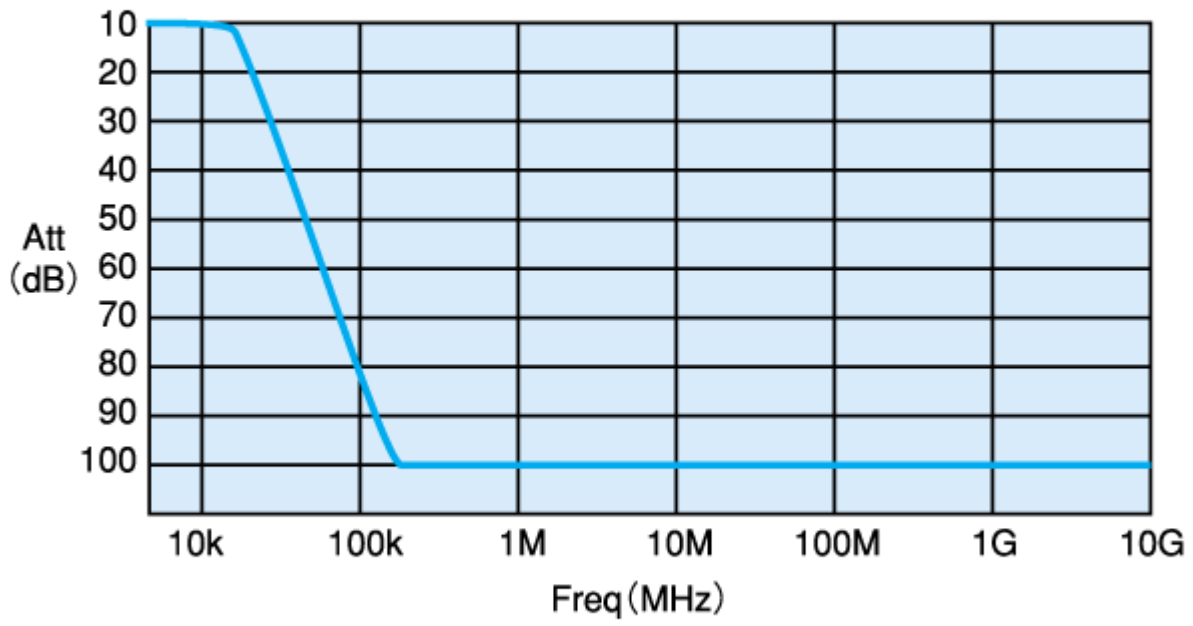
**Specifications**

Part No.	Rated Current	Leakage Current	Weight	Dimensions [mm]										
				A	B	C	D	E	F	G	H	J	K	L
SF3010A-AS	10A	225mA	7kg	540	110	80	525	50	45	50	CTC25	40	500	M4
SF3020A-AS	20A	225mA	7kg	540	110	80	525	50	45	50	CTC25	40	500	M4
SF3030A-AS	30A	225mA	7kg	590	110	80	575	50	45	50	CTC25	40	500	M5
SF3050A-AS	50A	552mA	11kg	560	150	105	540	45	45	50	CTC39	40	500	M6
SF3100A-AS	100A	615mA	22kg	710	270	205	690	105	45	50	CTC39	90	500	M10
Rated Voltage	250VAC max													
Leakage Current	(Please use Insulation Transformer together)													
Ambient temp.	-20 up to 50 Deg. C													

fig



**Frequency Data**



► Products li